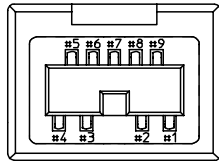
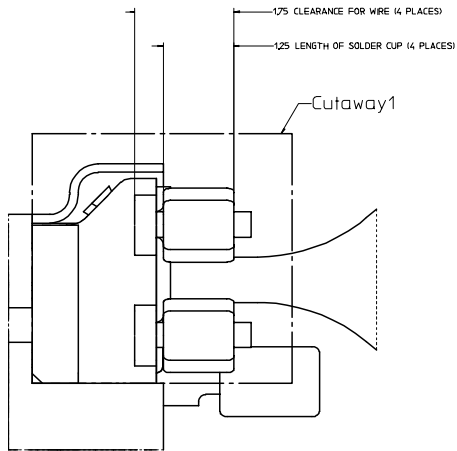
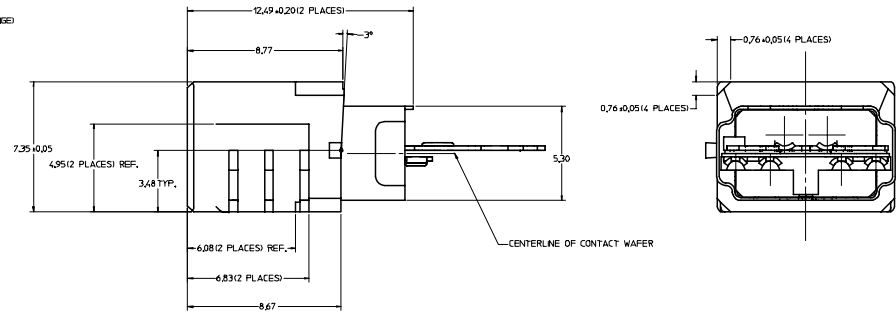
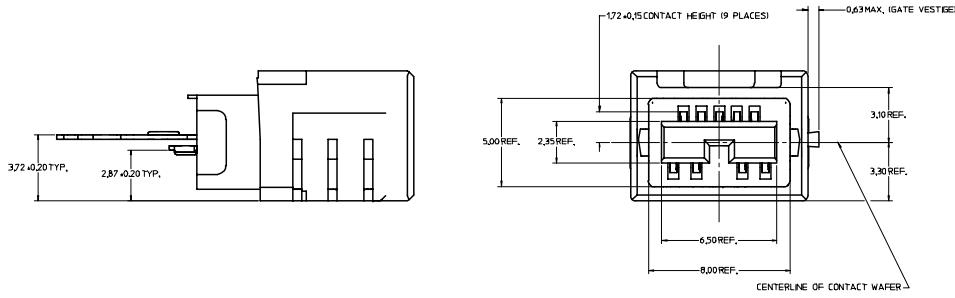
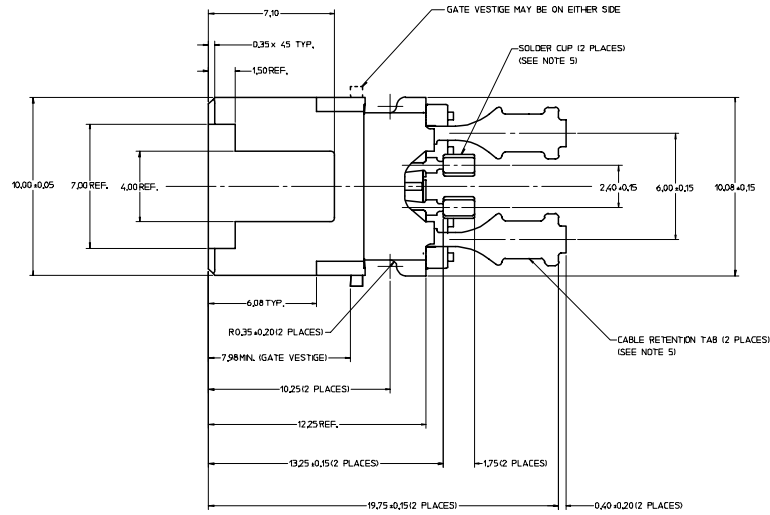


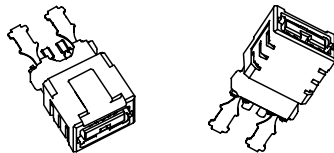
- NOTES:
 1. MATERIAL:
 PLASTIC MOLDINGS; GLASS FILLED LCP, COLOR BLACK,
 PLUG SHELL; STAINLESS STEEL,
 CONTACTS; COPPER ALLOY.
 2. FINISH:
 *PLUG SHELL; 3.05 MICRONS MINIMUM TIN OVER 127 MICRONS MINIMUM NICKEL,
 *CONTACTS; 0.25 MICRONS MINIMUM SELECT GOLD, AND 3.05 MICRONS MINIMUM SELECT TIN
 OVER 127 MICRONS MINIMUM NICKEL OVERALL,
 * THE PRIMARY SHIPPING CARTON WILL BE LABELED "COMPLIANT TO ROHS
 DIRECTIVE 2002/95/EEC AND ELY ANNEX II OF DIRECTIVE 2000/53/EEC
 CARTONS WITHOUT THIS LABEL MAY CONTAIN PRODUCT WITH TIN-LEAD
 IN THE PC TAIL AREA
 3. PRODUCT SPECIFICATION: PS-45240-001
 4. DIMENSIONS AND FEATURES PLACED ACROSS CENTERLINES TO BE SYMMETRIC ABOUT THOSE CENTERLINES
 WITHIN 0.5mm TOTAL.
 5. THE SOLDER CUPS AND CABLE RETENTION TABS ARE TIN PLATED TO FACILITATE SOLDERING.



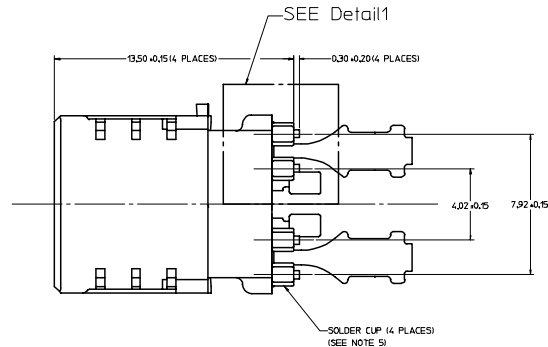
NUMBERING



Detail1
 SCALE 32:1



ISOMETRIC PROJECTIONS OF 449721001 FROM TWO PERSPECTIVES
 (SCALE 4:1)



REVISED EC NO: UCP2005-2000 DRAWN: COMERC CHK: JCHY APPR: JCOMERC REV: JCOMERC DESCRIPTION: 2005/03/18	QUALITY SYMBOLS	GENERAL TOLERANCES (UNLESS SPECIFIED)	SCALE 10:1	DESIGN UNITS METRIC	THIRD ANGLE PROJECTION	REVISE ON CAD ONLY	
	▽-0	mm INCH	Metric	Metric	TITLE	FINAL PLUG ASSEMBLY BILINGUAL PLUG 1394B	
	▽-0	4 PLACES ± --- ± --- 3 PLACES ± --- ± --- 2 PLACES ± 0.10 ± --- 1 PLACE ± --- ± ---	mm INCH	MM ONLY	DRAWN BY DATE PELOZA 01/10/03	CHECKED BY DATE PELOZA 01/10/03	APPROVED BY DATE COMERC 01/10/03
	DRAFT WHERE APPLICABLE MUST REMAIN WITHIN DIMENSIONS	ANGULAR ± 1 °			MATERIAL NO. 449721001	DOCUMENT NO. SD-44972-001	SHEET NO. 1 OF 1

THIS DRAWING CONTAINS INFORMATION THAT IS PROPRIETARY TO MOLEX INCORPORATED AND SHOULD NOT BE USED WITHOUT WRITTEN PERMISSION