

**Contact Information**

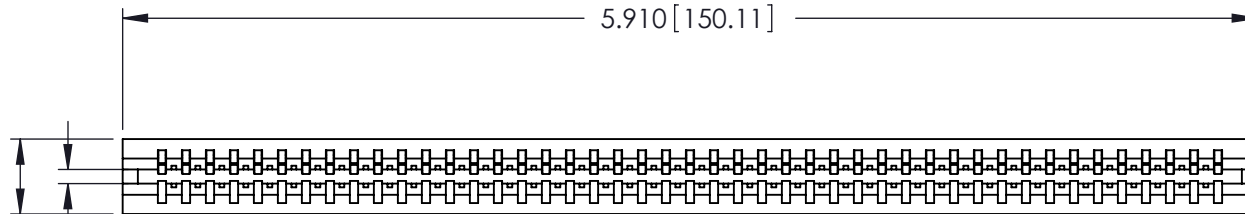
**520-P.C. Tail, Regular Point - Tail LG.=.175(4.45)  
 .125" (3.18mm) Contact Spacing x .250" (6.35mm) Row Spacing**

THIS IS A C.A.D. GENERATED DRAWING  
 DO NOT MAKE MANUAL REVISIONS TO MASTER.



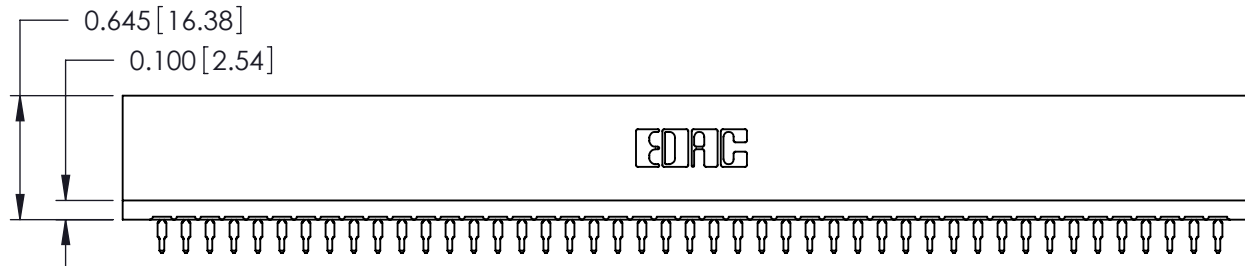
ISSUE NUMBER

ORIGINAL ①



Card Slot Accepts  
 .054 (1.37) to .070 (1.78)  
 Thick P.C. Board

0.390 [9.91]

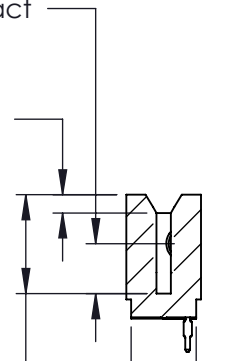


0.645 [16.38]

0.100 [2.54]


0.260 [6.60] Point of Contact

0.095 [2.41]



0.515 [13.08] Card Slot

0.340 [8.64]

|   |  |   |                |
|---|--|---|----------------|
| 746 Series Ultra-Mate Card Edge Connector - Press Fit   |  | ACAD REFERENCE NO.  | 746-ENG MASTER |
|   |  | DRAWN:  | J.LEE          |
| Part Number: 746-045-520-106  |  | CHECKED:  | DATE:          |
|   |  | SCALE:  | SHEET 1 OF 1   |
|  EDAC INC<br>TORONTO, ONTARIO<br>CANADA<br>YOUR CONNECTION TO QUALITY & SERVICE |  | THESE DRAWINGS AND SPECIFICATIONS<br>ARE THE PROPERTY OF EDAC INC. AND<br>SHALL NOT BE REPRODUCED, OR COPIED<br>OR USED AS THE BASIS FOR THE<br>MANUFACTURE OR SALE OF APPARATUS<br>WITHOUT WRITTEN PERMISSION. |                |
|   |  | DRAWING NUMBER  | 746-ENG MASTER |