

KATIE HAUSMAN
6/4/18

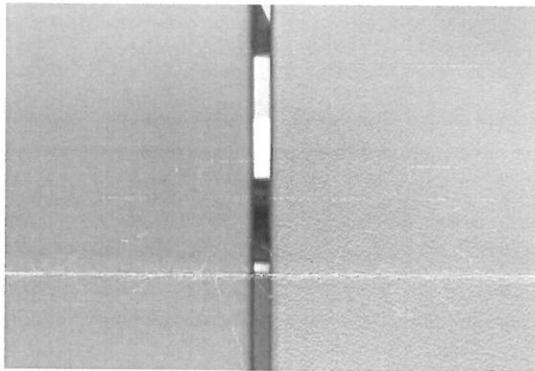
PRODUCT CHANGE NOTICE:

CHANGE DESCRIPTION

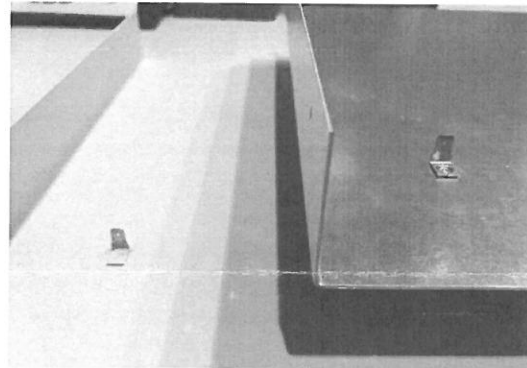
Material change for Inpac products

	Current Material	New Material
Material	.88mm steel	1.0mm steel (ST-BL 1.0330)
Plating	Inside = Zinc plated Outside = Plastic coated	Inside and outside zinc plated (DC01-B-M DIN EN 10130/10131)
Powder Coat	RAL 7035, outside only	RAL 7035, inside and outside
Grounding	With GND / earthing connection	

Technical properties are similar, but materials are different aesthetically.



New material (left), current Material (right), The exterior surface will be the same color, RAL 7035, but with a finer texture.



New material (left), current Material (right), All surfaces of the cover, including the interior, will be powder coated.

REASON FOR THE CHANGE

Changing the material will mitigate sourcing constraints, minimize leadtime and ensure consistent quality. The new material will also allow further customization, such as different color combinations.

PRODUCTS AFFECTED

All Inpac standard and custom kits, covers, and the 6U divider plate.

IMPLEMENTATION TIMELINE

The new part numbers will be available after May, 2018. Customers unable to transition to new material should place their final order before December 31, 2018.

Height U	Depth (mm)	Current Part Number	New Part Number
2	254.5	10828-071	10828-171
2	314.5	10828-072	10828-172
2	374.5	10828-073	10828-173
3	254.5	10828-051	10828-151
3	314.5	10828-052	10828-152
3	374.5	10828-053	10828-153
3	434.5	10828-054	10828-154
4	254.5	10828-056	10828-156
4	314.5	10828-057	10828-157
4	374.5	10828-058	10828-158
4	434.5	10828-059	10828-159
6	374.5	10828-068	10828-168
6	434.5	10828-069	10828-169