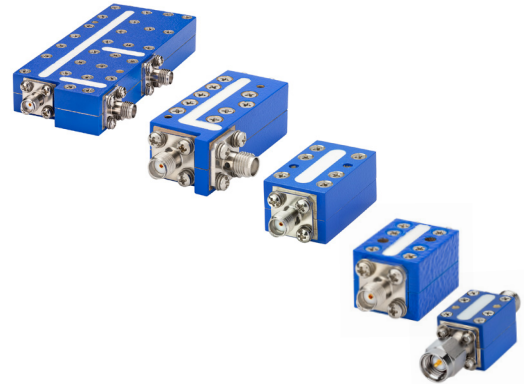


# Suspended Substrate Stripline Filters and Multiplexers

50Ω DC to 40 GHz

## The Big Deal

- Low insertion loss
- Ultra-wide passband width
- Fast roll-off with wide stopband
- Good power handling and temperature stability
- Passband up to 40 GHz
- Stopband up to 40 GHz



## Product Overview

Mini-Circuits' Suspended Substrate Stripline filters offer low insertion loss by implementing printed circuit board suspended between two parallel ground planes, providing high Q. Low insertion loss combined with wide stopband makes them an excellent choice for wideband instruments and systems like ECM, ECCM, ELINT and ultra-broadband receivers.

Low pass, high pass, band pass, band stop, diplexer and multiplexer designs can be realized with this technology. Advanced filter design and construction can achieve stopband width greater than 6x the center frequency, and temperature stability will be better than other printed circuit realizations because the fields are mainly in the air rather than in a dielectric. The inside walls of the housing hold the circuit and prevent movement that could be caused by vibration or mechanical shock, making these designs excellent candidates for harsh operating environments.

Suspended substrate stripline filters can be realized in small form factors with high-quality, precise machining for applications where size is critical. Excellent repeatability across units is achieved through precise tuning and process control.

## Key Features

Feature	Advantages
Low insertion loss	Low signal loss results in better SNR in receiver front end and better power delivery to antenna in transmitters
Fast roll-off	Higher selectivity results in better adjacent channel rejection and dynamic range
Wide stopband	Wide, spur-free stop band results in better receiver sensitivity
High power handling	Well suited for transmitter applications
Excellent temperature stability	Ensures minimal variation in electrical performance across temperature

### Notes

- A. Performance and quality attributes and conditions not expressly stated in this specification document are intended to be excluded and do not form a part of this specification document.  
B. Electrical specifications and performance data contained in this specification document are based on Mini-Circuit's applicable established test performance criteria and measurement instructions.  
C. The parts covered by this specification document are subject to Mini-Circuits standard limited warranty and terms and conditions (collectively, "Standard Terms"); Purchasers of this part are entitled to the rights and benefits contained therein. For a full statement of the Standard Terms and the exclusive rights and remedies thereunder, please visit Mini-Circuits' website at [www.minicircuits.com/MCLStore/terms.jsp](http://www.minicircuits.com/MCLStore/terms.jsp)



# Suspended substrate stripline Diplexer

## ZDSS-3G4G-S+

50Ω DC to 20000 MHz (DC-3000, 4000-20000 MHz)



Generic photo used for illustration purposes only

CASE STYLE: QH2362  
Connectors Model  
SMA-F ZDSS-3G4G-S+

**+RoHS Compliant**

The +Suffix identifies RoHS Compliance. See our web site for RoHS Compliance methodologies and qualifications

### Maximum Ratings

Operating Temperature	-40°C to 85°C
Storage Temperature	-55°C to 100°C
RF Power Input	3 W max. @ 25°C

Permanent damage may occur if any of these limits are exceeded.

### Coaxial Connections

Common Port	1
Low Pass Port	2
High Pass Port	3

### Features

- Low passband insertion loss
- Good flatness
- High rejection
- Connectorized package

### Applications

- Radar
- Test and measurement setup

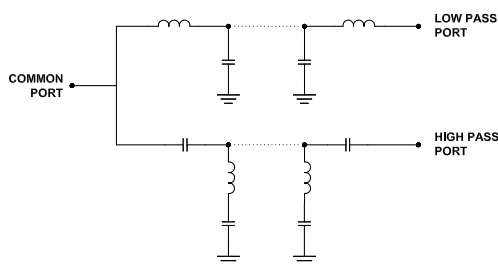
### Electrical Specifications at 25°C

Parameter	Port	Frequency (MHz)	Min.	Typ.	Max.	Unit	
Pass Band	Insertion Loss	Low Pass	DC-3000	-	1.5	2.0	dB
		High Pass	4000-20000	-	1.5	2.0	
	Return Loss	Low Pass	DC-3000	-	10	-	dB
		High Pass	4000-20000	-	10	-	
		Common	DC-3000	-	10	-	
			4000-20000	-	10	-	
Stop Band Isolation	Low Pass	4000-10000	20	30	-	dB	
		10000-20000	60	70	-		
	High Pass	DC-2000	40	50	-	dB	
		2000-3000	-	15	-		

### Typical Performance Data at 25°C

Frequency (MHz)	Insertion Loss (dB)		Return Loss (dB)		
	Low Pass Port	High Pass Port	Common Port	Low Pass Port	High Pass Port
10	0.01	86.60	56.05	57.72	0.00
100	0.05	94.84	31.98	32.08	0.00
2000	0.47	62.02	16.72	16.95	0.11
2925	0.91	29.90	14.47	15.05	0.32
3000	1.02	26.22	14.15	14.56	0.38
3100	1.23	19.66	16.93	16.15	0.57
3225	3.27	9.16	12.81	8.40	1.81
3300	9.61	5.50	5.78	2.97	3.23
3675	20.91	1.27	12.23	0.70	11.29
3900	29.73	0.71	25.00	0.50	21.96
4000	33.65	0.72	17.34	0.46	16.83
5000	54.81	0.58	13.93	0.36	14.40
10000	105.28	0.43	15.74	0.05	14.53
15000	102.76	0.32	27.38	0.15	32.56
20000	83.64	0.55	15.00	0.31	15.75

### Functional Schematic

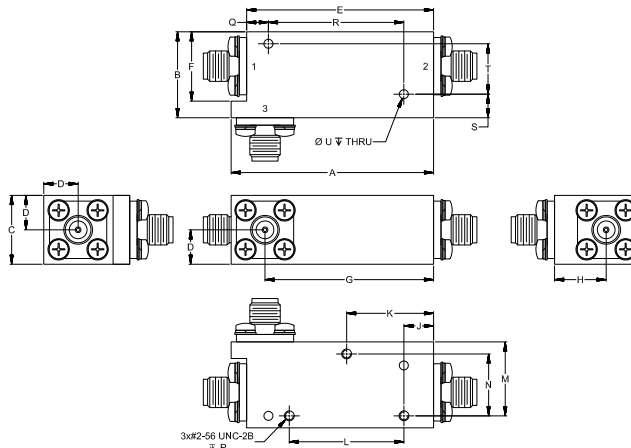


### Outline Dimensions (inch mm)

A	B	C	D	E	F	G	H	J	K	L
1.77	.75	.60	.30	1.63	.61	1.47	.45	.26	.76	1.000
44.96	19.05	15.24	7.62	41.40	15.49	37.34	11.43	6.60	19.30	25.40
M	N	P	Q	R	S	T	U			Wt.
.65	.540	.100	.19	1.181	.21	.440	.079			grams
16.51	13.72	2.54	4.83	30.00	5.21	11.18	2.00			105

Note: Please refer to case style drawing for details

### Outline Drawing



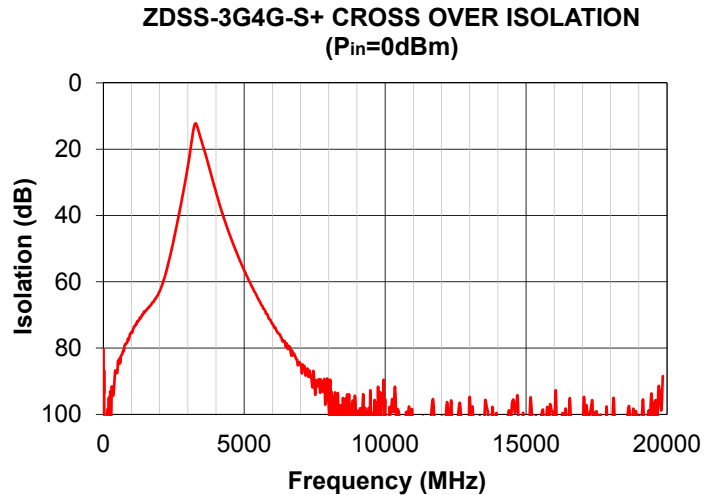
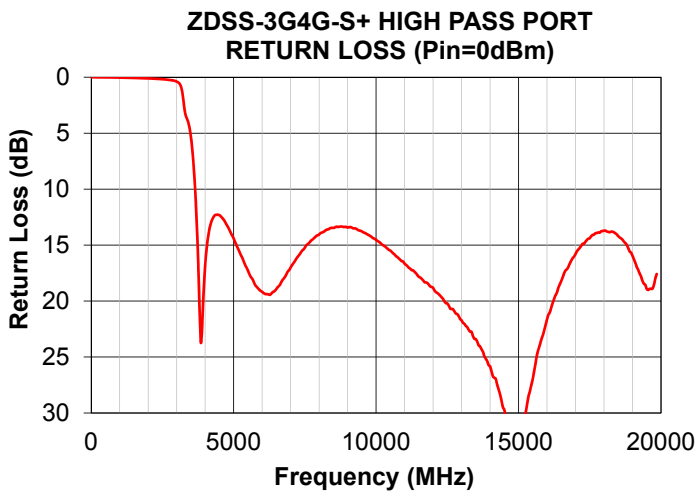
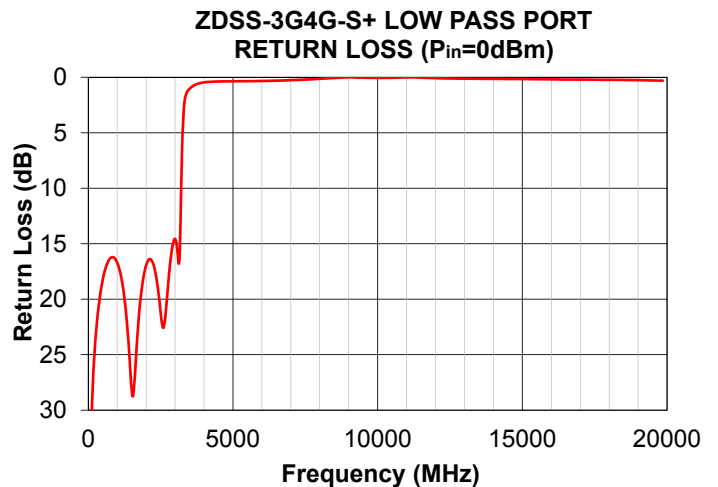
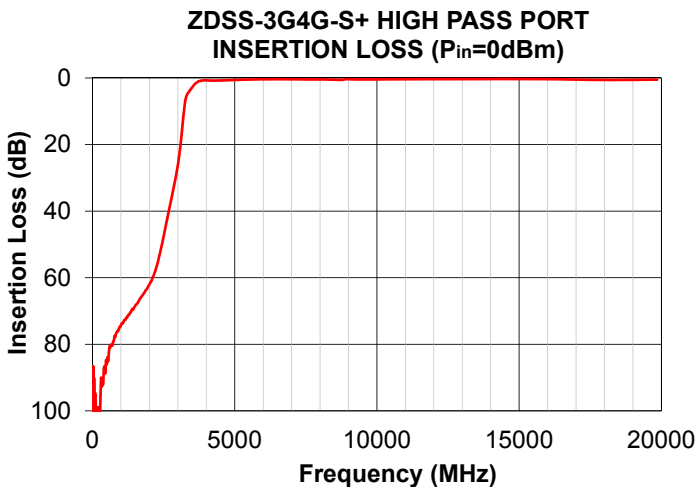
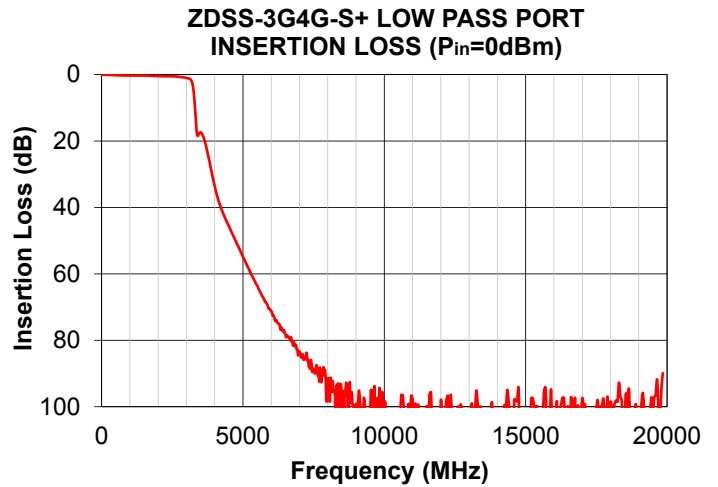
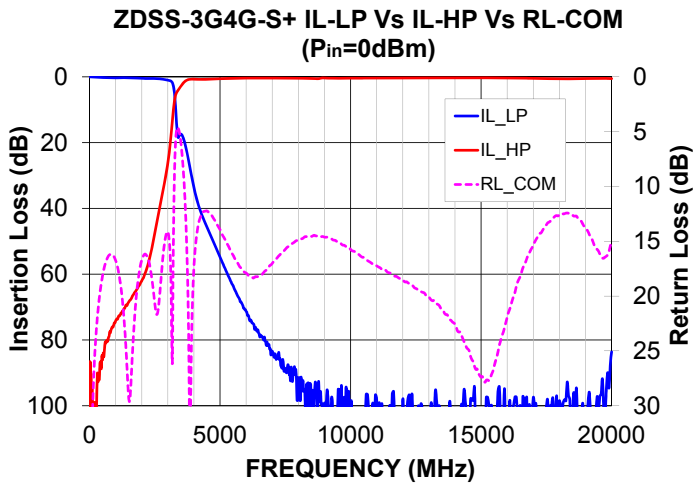
#### Notes

- Performance and quality attributes and conditions not expressly stated in this specification document are intended to be excluded and do not form a part of this specification document.
- Electrical specifications and performance data contained in this specification document are based on Mini-Circuits' applicable established test performance criteria and measurement instructions.
- The parts covered by this specification document are subject to Mini-Circuits standard limited warranty and terms and conditions (collectively, "Standard Terms"); Purchasers of this part are entitled to the rights and benefits contained therein. For a full statement of the Standard Terms and the exclusive rights and remedies thereunder, please visit Mini-Circuits' website at [www.minicircuits.com/MCLStore/terms.jsp](http://www.minicircuits.com/MCLStore/terms.jsp)



[www.minicircuits.com](http://www.minicircuits.com) P.O. Box 350166, Brooklyn, NY 11235-0003 (718) 934-4500 sales@minicircuits.com

REV. B  
ECO-011269  
ZDSS-3G4G-S+  
EDU2400/1  
URJ  
220223  
Page 2 of 3



Notes

- A. Performance and quality attributes and conditions not expressly stated in this specification document are intended to be excluded and do not form a part of this specification document.
- B. Electrical specifications and performance data contained in this specification document are based on Mini-Circuit's applicable established test performance criteria and measurement instructions.
- C. The parts covered by this specification document are subject to Mini-Circuits standard limited warranty and terms and conditions (collectively, "Standard Terms"); Purchasers of this part are entitled to the rights and benefits contained therein. For a full statement of the Standard Terms and the exclusive rights and remedies thereunder, please visit Mini-Circuits' website at [www.minicircuits.com/MCLStore/terms.jsp](http://www.minicircuits.com/MCLStore/terms.jsp)

