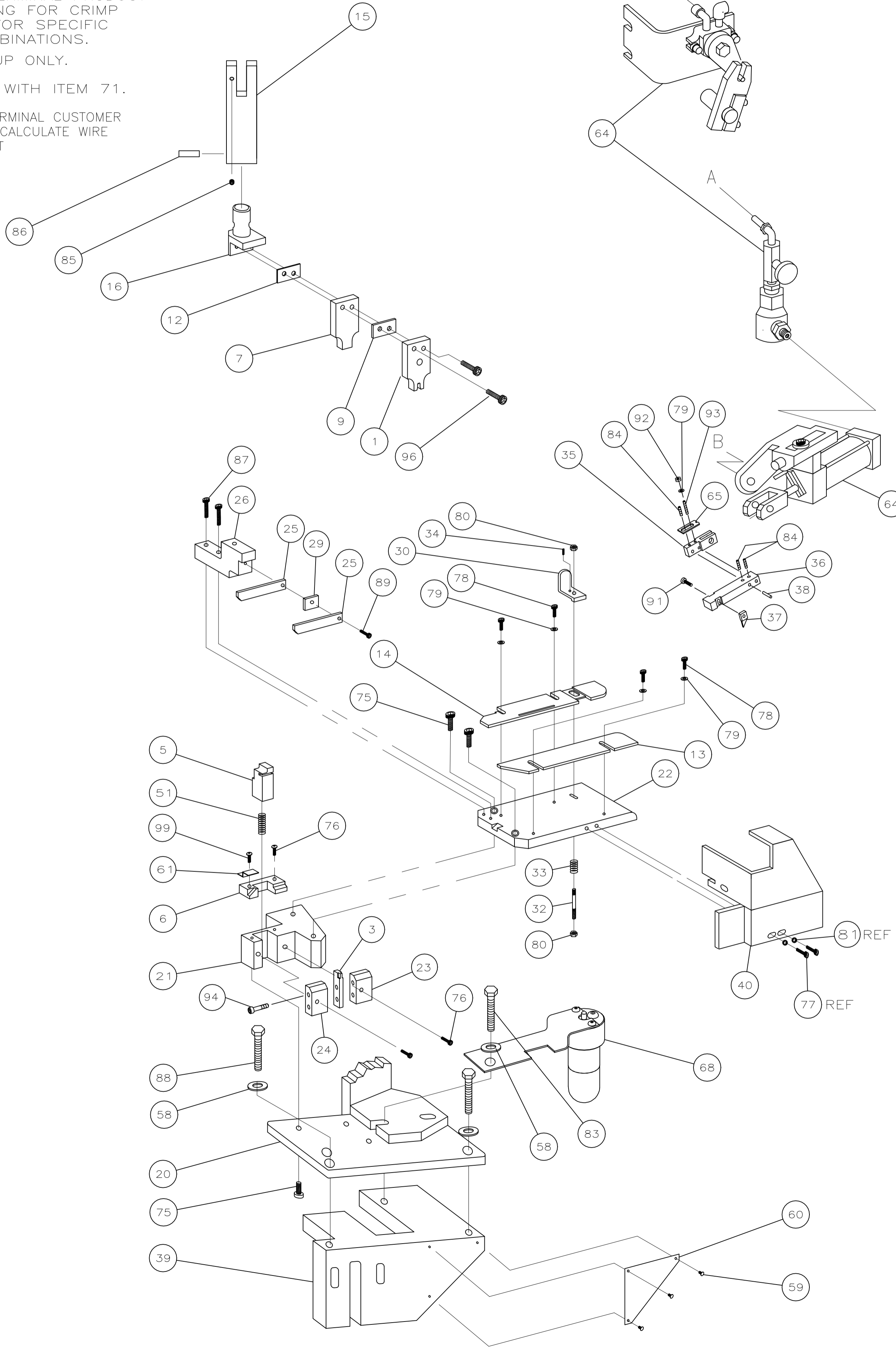


PART NUMBER	REV	FIRST USED
566269-1	N	1-471273-2

- △ 1 RECOMMENDED SPARE PARTS.
- △ 2 ITEMS NOT SHOWN.
- △ 3 SUPPLY WITH ITEM 72
- 4. CONTACT TERMINAL PRODUCT ENGINEERING FOR CRIMP HEIGHTS FOR SPECIFIC WIRE COMBINATIONS.
- △ 5 FOR SET-UP ONLY.
- △ 6 SUPPLIED WITH ITEM 71.
- △ 7 REFER TO TERMINAL CUSTOMER DRAWING TO CALCULATE WIRE CRIMP HEIGHT



TERMINAL NAME:	△ 7
SPLICE	62754
CRIMP HEIGHT	.141±.002
WIRE SIZE	(1)12+(1)10△ 5
CRIMP WIRE	.300 F 14,000-22,900 CMA
INSUL	-
FEED	.908
APPL INST	408-8012
SET UP GAGE	-
LAYOUT	-
TERM APPL SPEC	114-2088
WIRE STRIP LENGTH	.360-.400

-	-	-	-	-	-	-	-	-	129
-	-	-	-	-	-	-	-	-	128
-	-	-	-	-	-	-	-	-	127
-	-	-	-	-	-	-	-	-	126
-	-	-	-	-	-	-	-	-	125
-	-	-	-	-	-	-	-	-	124
-	-	-	-	-	-	-	-	-	123
-	-	-	-	-	-	-	-	-	121
-	-	-	-	-	-	-	-	-	120
-	-	-	-	-	-	-	-	-	119
-	-	-	-	-	-	-	-	-	118
-	-	-	-	-	-	-	-	-	117
-	-	-	-	-	-	-	-	-	116
-	-	-	-	-	-	-	-	-	115
-	-	-	-	-	-	-	-	-	114
-	-	-	-	-	-	-	-	-	113
-	-	-	-	-	-	-	-	-	112
-	-	-	-	-	-	-	-	-	111
-	-	-	-	-	-	-	-	-	110
-	-	-	-	-	-	-	-	-	109
-	-	-	-	-	-	-	-	-	108
-	-	-	-	-	-	-	-	-	107
-	-	-	-	-	-	-	-	-	106
-	-	-	-	-	-	-	-	-	105
-	-	-	-	-	-	-	-	-	104
-	-	-	-	-	-	-	-	-	103
-	-	-	-	-	-	-	-	-	102
-	-	-	-	-	-	-	-	-	101
-	-	-	-	-	-	-	-	-	100
-	-	-	-	-	-	-	-	-	99
△ 6	△ 2	2	-	A	3-21001-3	SCR, SHC, 3/8-16 X .75			98
△ 6	△ 2	2	-	A	3-21001-9	SCR, SHC, 3/8-16 X 2.00			97
△ 3	2	-	A	21001-7	SCR, SHC 1/4-20 X .25				96
2	-	A	1-21001-0	SCR, SHC, 1/4-20 X 200					95
2	-	A	3-21000-1	SCR, SHC 8-32 X 1.00					94
1	-	A	4-21006-4	SCR, SET, 8-32 X .50					93
1	-	A	21018-6	NUT, JAM, 8-32					92
1	-	A	2-21000-5	SCR, SHC, 8-32 X .25					91
2	-	A	21001-6	SCR, SHC, 1/4-20 X 1.00					90
1	-	A	2-21000-9	SCR, SHC 8-32 X .75					89
2	-	A	3-21015-1	SCR, HEX HD, 3/8-16 X 1.00					88
2	-	A	3-21000-1	SCR, SHC, 8-32 X 1.00					87
1	-	A	7-21029-0	PIN, SLT SPR, Ø312 X 1.62					86
1	-	A	2-21549-3	SCR, SOC SET, 1/4-20 X .25					85
3	-	A	3-21006-8	SCR, SOC SET 8-32 X .125					84
1	-	A	3-21015-3	SCR, HEX HD, 3/8-16 X 1.50					83
-	-	-	-	-	-	-	-	-	82
REF	-	A	21055-6	WASHER, FLAT, #8					81
1	-	A	21021-4	NUT, HEX, S/L 10-32					80
5	-	A	21055-6	WASHER, FLAT, #8					79
4	-	A	2-21000-6	SCR, SHC, 8-32 X .38					78
REF	-	A	2-21000-6	SCR, SHC, 8-32 X .38					77
4	-	A	3-21000-5	SCR, SHC, 10-32 X .50					76
5	-	A	21001-3	SCR, SHC, 1/4-20 X .62					75
-	-	-	-	-	-	-	-	-	74
-	-	-	-	-	-	-	-	-	73
-	-	-	-	-	-	-	-	-	72
△ 1	-	C	453930-4	CRIMPER, WIRE					71
△ 1	-	B	1-689722-0	ANVIL					70
-	-	-	-	-	-	-	-	-	69
1	-	A	453319-2	EXTENSION BASE 30"					68
1	-	A	453602-1	MOUNT BRACKET ASSY 30"					67
-	-	-	-	-	-	-	-	-	66
-	-	-	-	-	-	-	-	-	65
-	-	-	-	-	-	-	-	-	64
-	-	-	-	-	-	-	-	-	63
-	-	-	-	-	-	-	-	-	62
-	-	-	-	-	-	-	-	-	61
1	-	A	374999	TENSION ADJ PLATE					60
1	-	D	1-690021-3	AIR FEED ASSY					59
-	-	-	-	-	-	-	-	-	58
-	-	-	-	-	-	-	-	-	57
1	-	C	465184-8	LUBRICATOR ASSY					56
-	-	-	-	-	-	-	-	-	55
-	-	-	-	-	-	-	-	-	54
-	-	-	-	-	-	-	-	-	53
-	-	-	-	-	-	-	-	-	52
1	-	B	387083	SPRING, SHEAR					51
-	-	-	-	-	-	-	-	-	50
-	-	-	-	-	-	-	-	-	49
-	-	-	-	-	-	-	-	-	48
-	-	-	-	-	-	-	-	-	47
-	-	-	-	-	-	-	-	-	46
-	-	-	-	-	-	-	-	-	45
-	-	-	-	-	-	-	-	-	44
-	-	-	-	-	-	-	-	-	43
-	-	-	-	-	-	-	-	-	42
-	-	-	-	-	-	-	-	-	41
1	-	D	1-461028-9	GUARD					40
1	-	C	570238	BASE CASTING					39
2	-	B	1-21030-5	FEED FINGER DOWEL PIN					38
1	-	A	811645-1	TIP, FEED FINGER					37
1	-	-	811644-1	FEED FINGER					36
1	-	A	810131	HOLDER, FEED FINGER					35
1	-	A	2-21006-9	SCR, STOCK DRAG, 6-32 X .25					34
1	-	A	373469	SPRING, STOCK DRAG					33
1	-	A	370573	STUD, STOCK DRAG					32
1	-	A	21018-5	NUT, HEX 6-32					31
1	-	B	387650-4	STOCK DRAG					30
1	-	A	692968-6	STRIPPER SPACER					29
-	-	-	-	-	-	-	-	-	28
-	-	-	-	-	-	-	-	-	27
1	-	A	692875-4	MOUNT, STRIPPER					26
2	-	A	811266-5	STRIPPER					25
1	-	A	811839-6	AUX ANVIL HOLDER					24
1	-	A	811838-7	ANVIL HOLDER					23
1	-	B	692187-1	PLATE, STRIP GUIDE					22
1	-	C	565076-1	BLOCK, BASE					21
1	-	B	465317-1	PLATE, BASE					20
-	-	-	-	-	-	-	-	-	19
-	-	-	-	-	-	-	-	-	18
-	-	-	-	-	-	-	-	-	17
1	-	C	465325-1	HOLDER, TOOL					16
1	-	B	471167	RAM					15
1	-	B	812767-1	STRIP GUIDE, REAR					14
1	-	B	465320-5	STRIP GUIDE, FRONT					13
1	-	-	854652-8	CRIMP SPACER					12
-	-	-	-	-	-	-	-	-	11
-	-	-	-	-	-	-	-	-	10
1	-	C	370570	SPACER					9
-	-	-	-	-	-	-	-	-	8
1	-	A	456172-4	SHEAR DEP					7
1	-	A	811239-1	PLATE, SHEAR					6
1	-	B	465324-4	SHEAR, FLOATING					5
-	-	-	-	-	-	-	-	-	4
1	-	B	1-689722-0	ANVIL					3
-	-	-	-	-	-	-	-	-	2
1	-	C	453930-4	CRIMPER, WIRE					1

REVISED PER ECR-21-006174					DATE	DN	APVD
N1	REVISED PER	ECR-21-006174	09JUN2021	GK	RK		

P	LTR	DESCRIPTION	DATE	DN	APVD
-	-	-	-	-	-
-	-	-	-	-	-
1	-	B	465319-2		73
1	-	A	453602-1		72
-	-	-	-	-	71
-	-	-	-	-	70
-	-	-	-	-	69
1	-	C	465184-8		68
-	-	-	-	-	67
-	-	-	-	-	66
-	-	-	-	-	65
1	-	A	374999		65
1	-	D	1-690021-3		64
-	-	-	-	-	63
-	-	-	-	-	62
-	-	-	-	-	61
1	-	-	455443-2		61
1	-	B	452373-1		60
3	-	A	21017-6		59
3	-	A	371178		58
-	-	-	-	-	57
-	-	-	-	-	56
-	-	-	-	-	55
-	-	-	-	-	54
-	-	-	-	-	53
-	-	-	-	-	52
1	-	B	387083		51
-	-	-	-	-	50
-	-	-	-	-	49
-	-	-	-	-	48
-	-	-	-	-	47
-	-	-	-	-	46
-	-	-	-	-	45
-	-	-	-	-	44
-	-	-	-	-	43
-	-	-	-	-	42
-	-	-	-	-	41
1	-	D	1-461028-9		40
1	-	C	570238		39
2	-	B	1-21030-5		38
1	-	A	811645-1		37
1	-	-	811644-1		36
1	-	A	810131		35
1	-	A	2-21006-9		34
1	-	A	373469		33
1	-	A	370573		32
1	-	A	21018-5		31
1	-	B	387650-4		30
1	-	A	692968-6		29
-	-	-	-	-	28
-	-	-	-	-	27
1	-	A	692875-4		26
2	-	A	811266-5		25
1	-	A	811839-6		24
1	-	A	811838-7		23
1	-	B	692187-1		22
1	-	C	565076-1		21
1	-	B	465317-1		20
-	-	-	-	-	19
-	-	-	-	-	18
-	-	-	-	-	17
1	-	C	465325-1		16
1	-	B	471167		15
1	-	B	812767-1		14
1	-	B	465320-5		13
1	-	-	854652-8		12
-	-	-	-	-	11
-	-	-	-	-	10
1	-	C	370570		9
-	-	-	-	-	8
1	-	A	456172-4		7
1	-	A	811239-1		6
1	-	B	465324-4		5
-	-	-	-	-	4
1	-	B	1-689722-0		3
-	-	-	-	-	2
1	-	C	453930-4		1