



Quality Products. Service Excellence.

Sloped Aluminum Consoles 1456CWW Series

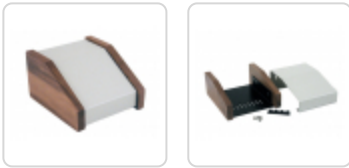
w/ Real Walnut Side Panels

Key Features:

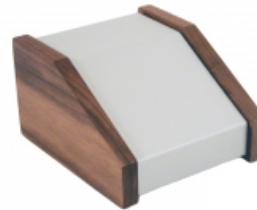
- Solid oiled walnut sides on a black, ventilated steel base.
- Solid wood sides are real walnut - each piece has a unique color & grain.
- Aluminum top panel is powder painted in a satin contemporanea grey (beige).
- Aluminum top panel sizes are 0.064" thick aluminum.
- Comes with self adhesive rubber feet and required mounting hardware.
- Replacement screws **1421J6** (Pkg. of 6, 6-32 Philips head screws).



Photo Features:



15 degree slope



30 degree slope



Shown unassembled.

Enclosures

Slope	Part Number	Width	Depth	Rear Height	Front Height
10 Degrees	1456PH1WHCWW	14.00	8.30	3.00	1.50
15 Degrees	1456CE2WHCWW	4.00	5.50	2.00	1.10
15 Degrees	1456FH2WHCWW	6.50	8.50	2.00	1.10
15 Degrees	1456KH3WHCWW	10.00	8.30	3.00	1.30
15 Degrees	1456PH3WHCWW	14.00	8.30	3.00	1.30
15 Degrees	1456PL3WHCWW	14.00	11.30	3.00	1.30
30 Degrees	1456CE3WHCWW	4.00	5.50	3.00	1.10
30 Degrees	1456KK4WHCWW	10.00	10.20	4.00	1.10
30 Degrees	1456PK4WHCWW	14.00	10.20	4.00	1.10

Tags: console, classic, sloped enclosure, instrument enclosure

Data subject to change without notice

