

**BILL OF MATERIALS**

NO.	QTY	SUPPLIER	DESCRIPTION	PART No.	SEE NOTE
1	17	PAN	MALE CRIMP TERMINAL	95065-CM2	1,2
2	1	PAN	25 POSITION MALE DSUB CONNECTOR	95065-C25T	1,2,4
3	2	ELDON ELECTRONICS	SHELL/SCREW KIT	6260-0101-03	1,2
4	1	MOLEX	17 CORE CABLE SEE CABLE SPECIFICATION	99036-0065	2,4
5	1	BRADY	LABEL	THT-9-427-10	1,2,3
6	1	PAN	25 POSITION FEMALE DSUB CONNECTOR	95066-C25T	1,2,4
7	17	PAN	FEMALE CRIMP TERMINAL	95066-CF2	1,2

**WIRING DIAGRAM : 17 CORE CABLE**

2		4		6	
25 POS. D SUB MALE CONN. A		17 CORE CABLE		25 POS. D SUB FEMALE CONN B	
CIRCUIT No.	CONDUCTOR No.	CIRCUIT No.	CONDUCTOR No.	CIRCUIT No.	CONDUCTOR COLOUR REF
2	1	2	1	2	RED
3	2	3	2	3	BLUE
4	3	4	3	4	GREEN
5	4	5	4	5	YELLOW
6	5	6	5	6	WHITE
7	6	7	6	7	BLACK
8	7	8	7	8	BROWN
11	8	11	8	11	VIOLET
15	9	15	9	15	ORANGE
17	10	17	10	17	PINK
18	11	18	11	18	TURQUOISE
20	12	20	12	20	GREY
21	13	21	13	21	RED/BLUE
22	14	22	14	22	GREEN/RED
23	15	23	15	23	YELLOW/RED
24	16	24	16	24	WHITE/RED
25	17	25	17	25	RED/BLACK

**4 CABLE SPECIFICATION : 17 CORE CABLE**

1. CABLE TYPE: FLAT  RIBBON  ROUND  OTHER   
 SPIRAL CABLE YES  NO   
 NO. OF CONDUCTORS 17

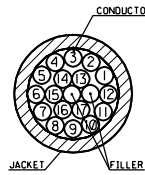
2. CABLE REQUIREMENTS : CABLE MUST UNWIND FROM REEL WITH ORIENTATION AS PER DIAGRAM BELOW

3. CONDUCTOR SPECIFICATIONS :

CONDUCTOR No.	CONDUCTOR No.	COLOURS:
1 - 17	1 - 17	1. RED
		2. BLUE
		3. GREEN
		4. YELLOW
		5. WHITE
		6. BLACK
		7. BROWN
		8. VIOLET
		9. ORANGE
		10. PINK
		11. TURQUOISE
		12. GREY
		13. RED/BLUE
		14. GREEN/RED
		15. YELLOW/RED
		16. WHITE/RED
		17. RED/BLACK

INSULATION :  
 - MATERIAL PP  
 - TEMPERATURE RATING 80°C  
 - VOLTAGE RATING 500V  
 - NOM. WALL THICKNESS 0.25 ± 0.05  
 - COLOUR SEE CABLE DIAGRAM/COLOUR CODE  
 - OUTSIDE DIAMETER L10 ± 0.05

DIRECTION OF LAY S  
 LENGTH OF LAY 85  
 U.L. RATING N/A



SCALE 5:1

4. FILLER : ENOUGH TO MAKE CABLE ROUND

5. SEPARATOR : TYPE MYLAR BINDER  
 LAY DIRECTION N/A

6. SHIELD : FOIL TYPE N/A  
 FOIL PACING N/A

7. DRAIN WIRE : GAUGE N/A  
 STRANDING N/A  
 REQUIREMENT N/A

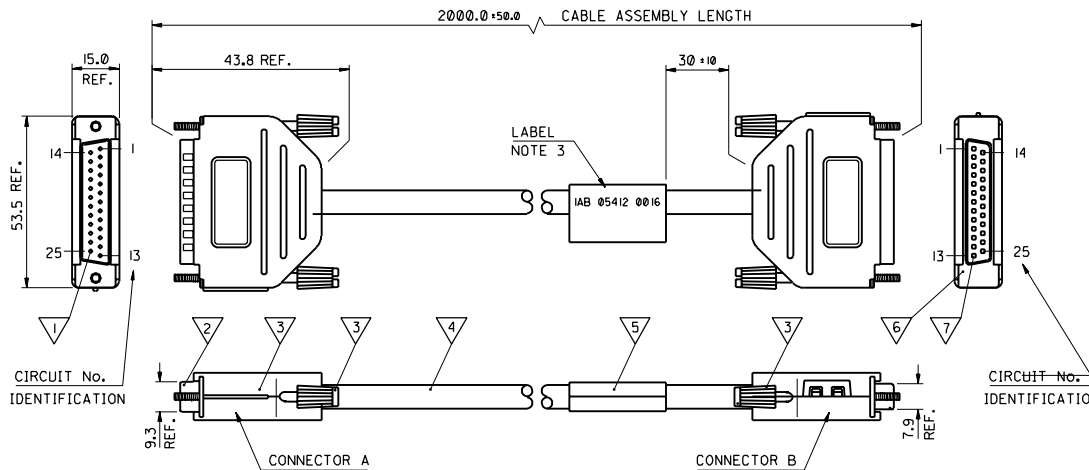
8. SPIRAL/BRAID : GAUGE N/A  
 COPPER TYPE N/A  
 COVERAGE

9. CABLE JACKET : TYPE PVC  
 TEMP. RATING 80°C  
 VOLTAGE RATING 500V  
 FINAL DIAMETER 7.40 ± 0.20  
 NOM. THICKNESS 0.90 ± 0.20  
 COLOUR BLACK  
 FINISH GLOSS  
 U.L. RATING N/A  
 HARDNESS 84 SHORE A  
 STRIPABILITY GOOD  
 MARKINGS N/A

**NOTES:-**

- SUPPLIER OR CUSTOMER APPROVED EQUIVALENT.
- ONLY AVAILABLE FROM MOLEX AS PART OF A CABLE ASSEMBLY.
- LABEL TO BE PRINTED WITH PART NO. IAB 05412 0016.
- ASSEMBLIES TESTED FOR SHORTS AND DISCONTINUITIES BETWEEN ALL CIRCUITS.
- PARTS TO BE PACKED INDIVIDUALLY IN BAGS AND LABELLED AS SHOWN, YEAR AND MONTH, "XX", TO BE PRINTED ACCORDING TO IEC 62 INDEX 5.1.

MOLEX 92605-0004  
 XX MXI



ORIGINAL ISSUE	REVISIONS	DIMENSIONS SHOWN (METRIC) INCH	UNLESS OTHERWISE SPECIFIED TOLERANCES: ANGULAR ± 0.5°	DRWG BY	REVISE ONLY ON CAD SYSTEM	SHL. REV.
A	1	3 PLACE ± .1	2 PLACE ± .05	AMC	CAD/CAM FILE NAME: SDA92605.DGN	
		1 PLACE ± .01	± .005		THIS DRAWING CONTAINS INFORMATION THAT IS PROPRIETARY TO MOLEX INC. & SHOULD NOT BE USED WITHOUT WRITTEN PERMISSION	
		DESIGN DIMENSION (PRIMARY) □ IN. □ MM	EQUIVALENT DIMENSION (SECONDARY) □ IN. □ MM	APPD BY	TITLE: 25 POS MALE TO 25 POS FEMALE DSUB HARNESS ASSEMBLY	
				SCALE: 1:1	MOLEX EUROPE SHEET NO. DATE: IOF1 97/05/12	
					PART NO. 92605-0004 DWG NO. SDA-92605-0004 SIZE C	