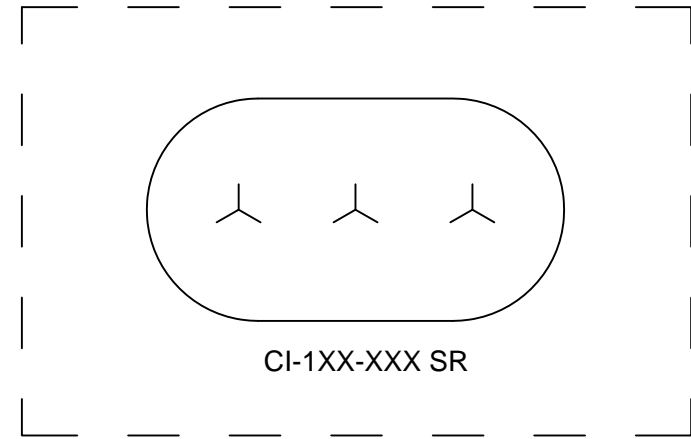
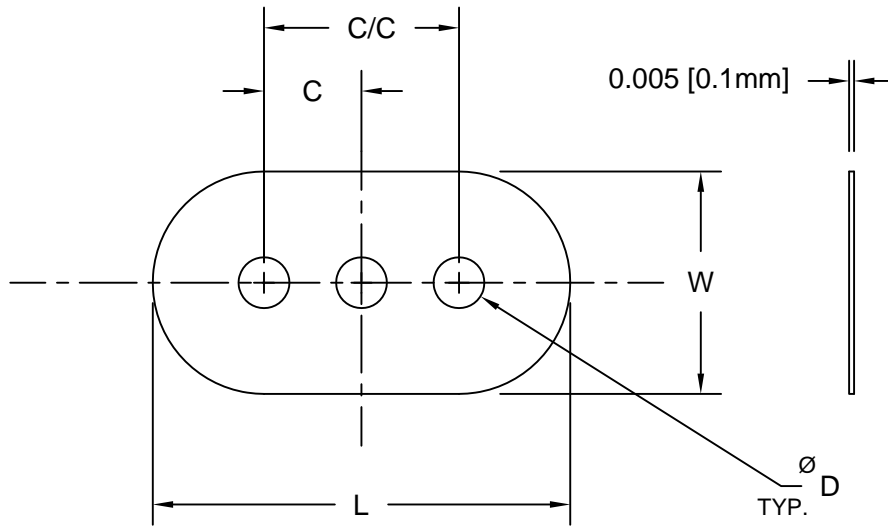

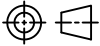


REV.	DESCRIPTION	DATE	APPROVED
A	Engineering Update w/o Changes	02/24/04	M. C.
B	Engineering Release for Quote	07/10/08	M. C.
C	EOL 12/2010, CI-148-XXX	02/21/11	T. Y.
D	Removed Material Code	05/24/16	J. C.



PART NO.	C	C/C	L	D	W
CI-192-028	-	.192 (4.9)	.465 (11.8)	.028 (.71)	.219 (5.6)
CI-192-028SR*	-	.192 (4.9)	.465 (11.8)	*	.219 (5.6)
CI-192-028-3	.096 (2.4)	.192 (4.9)	.465 (11.8)	.028 (.71)	.219 (5.6)
CI-192-028-3SR*	.096 (2.4)	.192 (4.9)	.465 (11.8)	*	.219 (5.6)
CI-192-050	-	.192 (4.9)	.465 (11.8)	.050 (1.3)	.219 (5.6)
CI-192-050-3	.096 (2.4)	.192 (4.9)	.465 (11.8)	.050 (1.3)	.219 (5.6)

3. \* SR STANDS FOR SELF RETAINING LANCED FEATURE.
2. MATERIAL: POLYESTER FILM, 94VTM-2, CLEAR.
1. GENERAL SPECIFICATIONS: BIVAR MOLDED COMPONENT SPECIFICATION BV00-E101.

STANDARD TOLERANCE (UNLESS OTHERWISE SPECIFIED)		 4 THOMAS, IRVINE, CA. 92618 TEL: (949) 951-8808 FAX: (949) 951-3974	
DECIMALS	ANGULAR		
.X ±.1	X° ± 1°		TITLE: CRYSTAL INSULATOR
.XX ±.01			DESIGNED: <b>T. Yin</b>
.XXX ±.005		CHECKED: <b>D. Green</b>	DATE: <b>02/24/03</b>
		PART NO: <b>CI-1XX-XXX</b>	REVISION: <b>D</b>
		CAGE CODE : <b>32559</b>	SHEET # <b>1</b> OF <b>1</b>
CAD GENERATED DOCUMENT. DO NOT MEASURE DRAWING.			