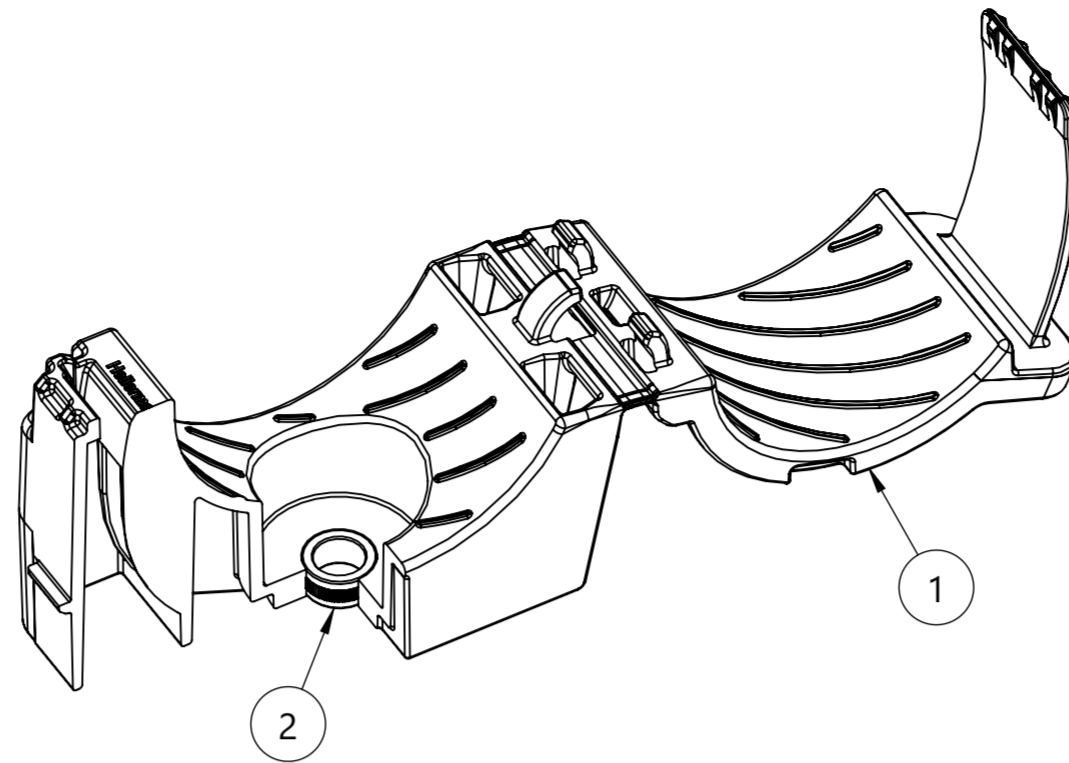
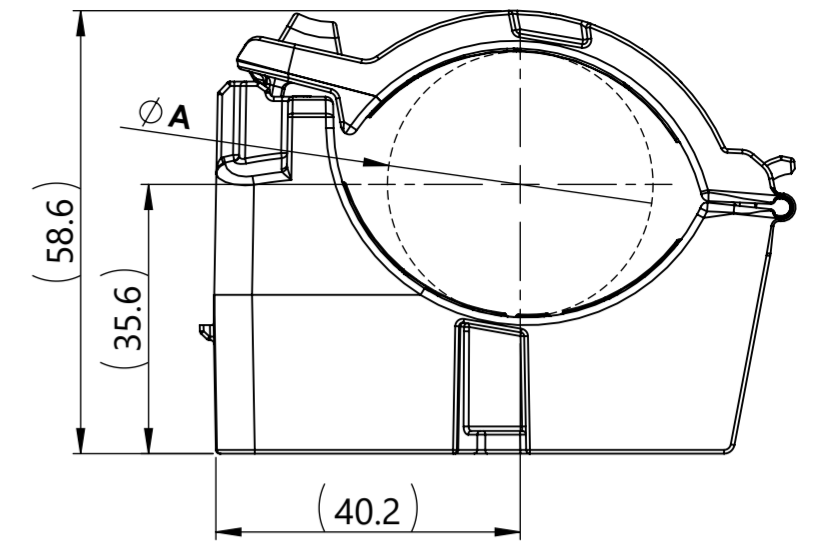


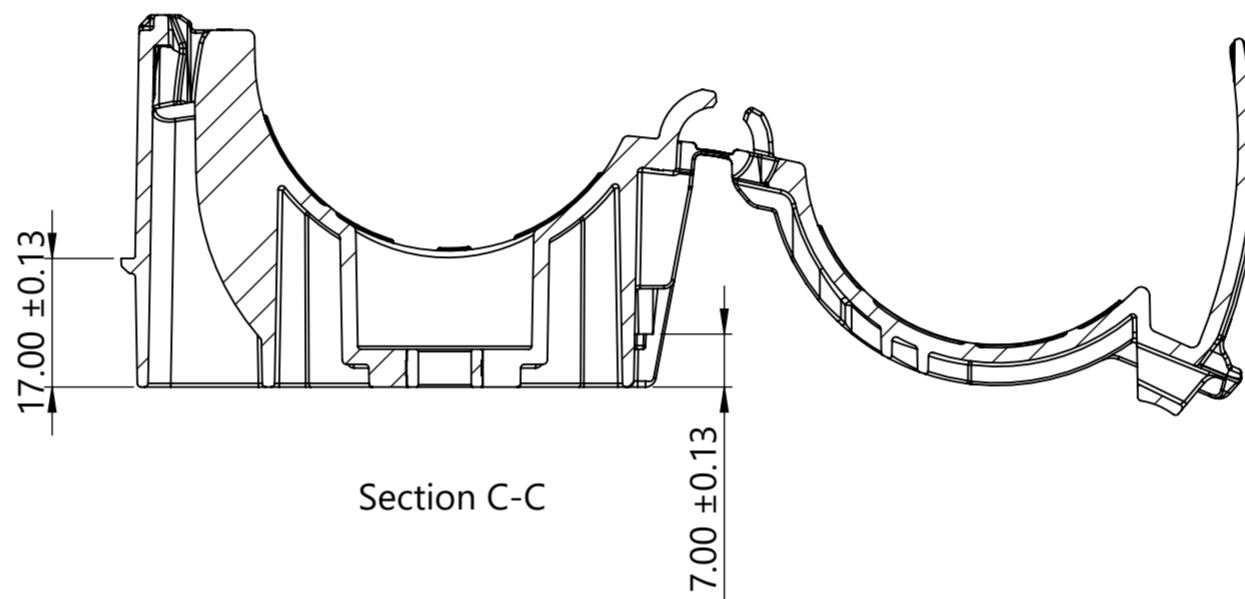
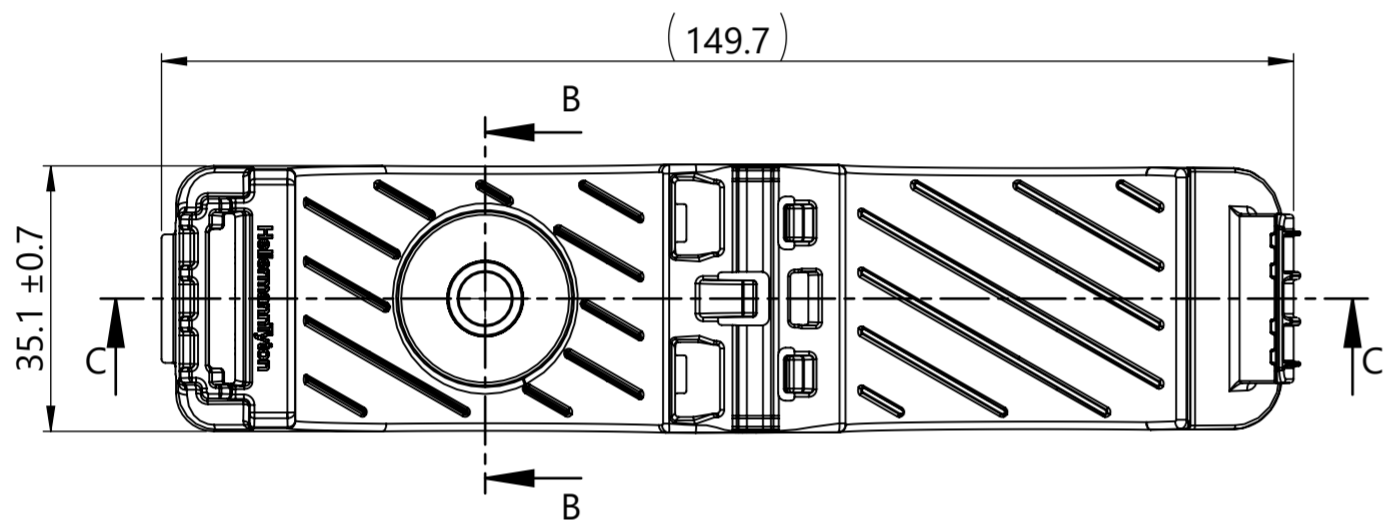
Isometric View
Product shipped in clamp open position



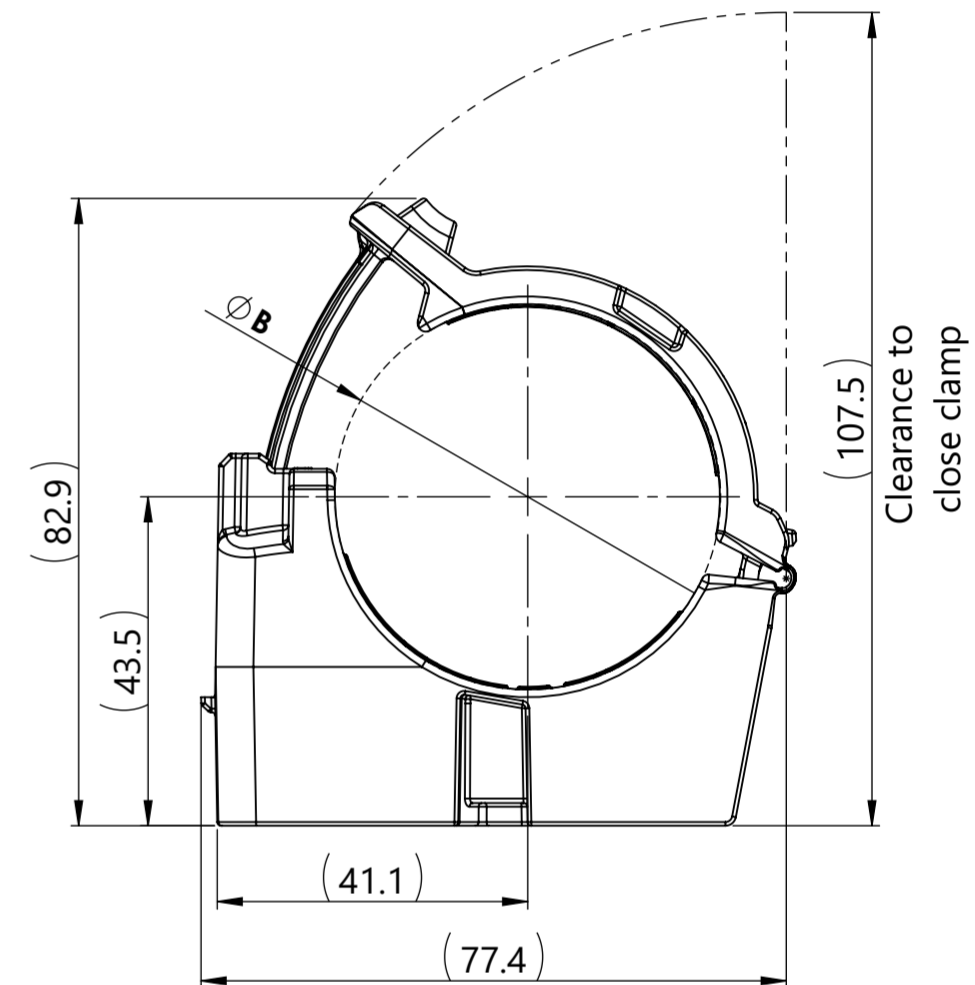
Section Isometric View



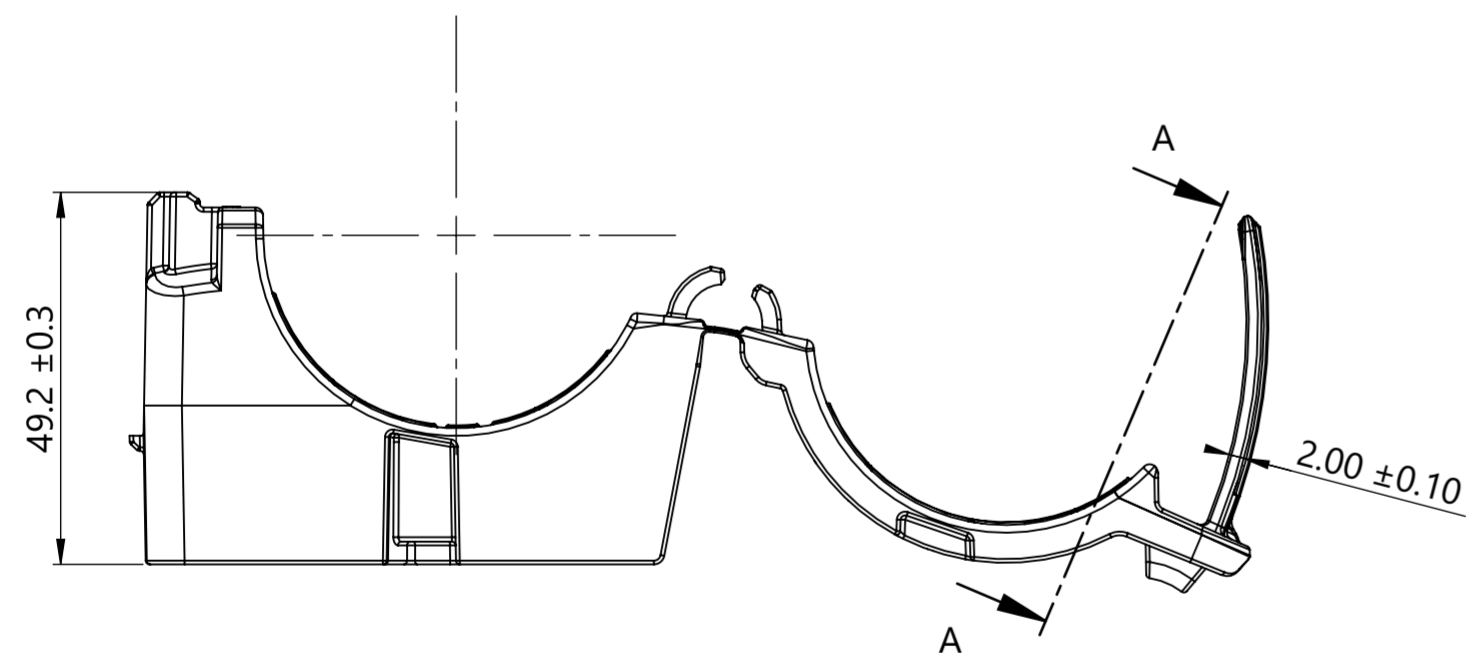
Minimum Bundle Diameter



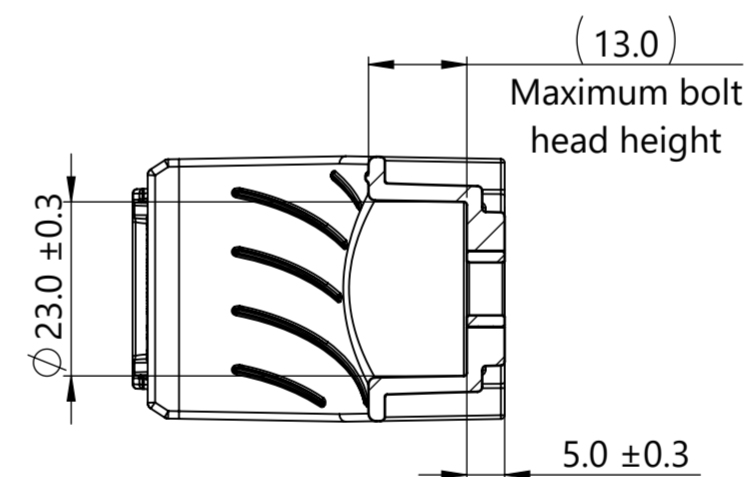
Section C-C



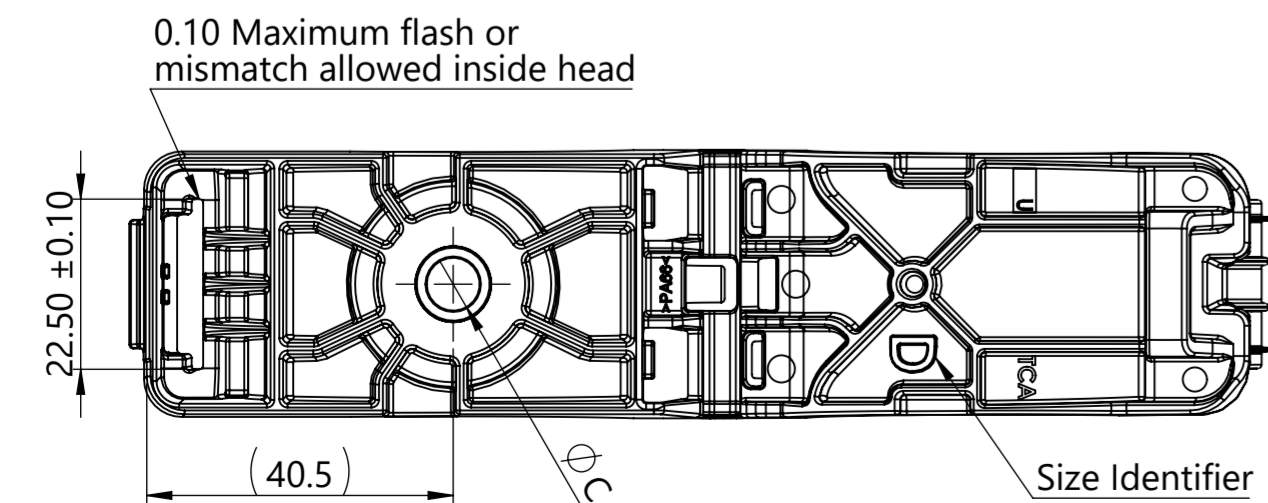
Maximum Bundle Diameter



Section A-A



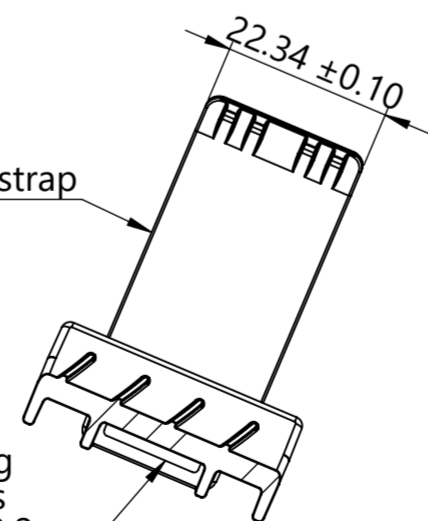
Section B-B



Size Identifier

0.10 Maximum flash or mismatch allowed around perimeter of strap

Saddle opening accommodates Straps up to 13.2 wide and 2.1 thick



Section A-A

Notes:

1. Material: See chart
2. Material color: See chart
3. Maximum percent regrind permissible: 25%
4. Maximum allowable flash to be: 0.50 "Unless otherwise noted"
5. Maximum allowable mismatch to be: 0.15 "Unless otherwise noted"

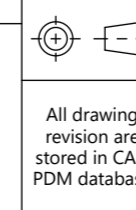
Performance requirements:
Dry as molded with $\leq 0.5\%$ moisture content:

1. ITS-0001 Ratchet Clamp Split Mandrel Test: 445 newtons [100 lbf] minimum at a nominal bundle diameter of 44.45 [1.750in]

Bundle Types	A Minimum Diameter	B Maximum Diameter
Soft	36.0 ± 0.3	51.0 ± 0.3
Hard	35.2 ± 0.3	49.9 ± 0.3

Global Part Number	Global Part Description	Mounting Hole Size	Torque Specification	ØC	Item Number	Qty.	Type Number	Material	Color
21-0220	CMRCDHM6-PA66HIRHSUV-BK	M6	13.0 N-m [115.06 lb-in]	7.0 ± 0.1	1	1	-	PA66HIRHSUV	Black
					2	1	16A060LSX050N	Zinc Plated Steel	Silver
21-0223	CMRCDHM8-PA66HIRHSUV-BK	M8	31.0 N-m [274.37 lb-in]	9.0 ± 0.1	1	1	-	PA66HIRHSUV	Black
					2	1	16A080LSX050N	Zinc Plated Steel	Silver
21-0225	CMRCDHM10-PA66HIRHSUV-BK	M10	62.0 N-m [548.75 lb-in]	11.2 ± 0.1	1	1	-	PA66HIRHSUV	Black
					2	1	16A100LSX050N	Zinc Plated Steel	Silver

Revision level	Revision Record	Drawn	Date (YYYY/MM/DD)	Title	Scale
Drawing State Part	ECN 016829	Spangler	2021/04/28	CMRCDHM6	1:1
00.0 Design Release -		Approved	Date (YYYY/MM/DD)	Center Mount RCD Ratchet P-Clamp, Size D, Clamp Range 36.0 to 51.0, High Torque	Global Project Number
Changed Date (YYYY/MM/DD)		Toll	2021/04/28		21-0220
Spangler 2022/01/18					Format A2
Approved Date (YYYY/MM/DD)					Sheet 1/1
Toll 2022/01/18					



HellermannTyton
www.HellermannTyton.com

Drawing-No
21-0220-104-CSU