

# Product Change Notification

## PCN#21-14

---

**C&K**

Office 1007-8, 10/F, Harcourt House, 39 Gloucester Road, Wanchai, Hong Kong  
Tel: +852 3713 5288      [www.ckswitches.com](http://www.ckswitches.com)

Document subject to change without prior notice

## Document revision

Revision	Date	Description	Author
A	2021/11/2	A PCN for a Copied New insertmold for KXT3	Liu, Daisy

---

**C&K**

Office 1007-8, 10/F, Harcourt House, 39 Gloucester Road, Wanchai, Hong Kong  
Tel: +852 3713 5288      [www.ckswitches.com](http://www.ckswitches.com)

Document subject to change without prior notice

## Summary

1. Purpose .....	4
2. Overview .....	4
3. Impact of Change .....	5
4. Part References affected.....	5
5. Date of application.....	5
6. Conditions of application .....	5
7. Support .....	5

---

**C&K**

Office 1007-8, 10/F, Harcourt House, 39 Gloucester Road, Wanchai, Hong Kong  
Tel: +852 3713 5288      [www.ckswitches.com](http://www.ckswitches.com)

Document subject to change without prior notice

**1. Purpose**

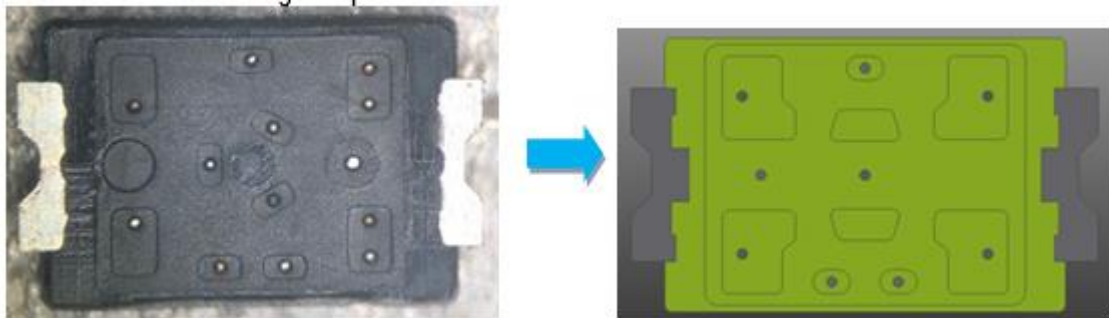
The KXT3 insertmold needs to be renewed.

**2. Overview**

The new insertmold is a copy of the existing insertmold but has some extra features added to further improve the reliability of the product. There is a slight appearance change as a result, but there are no dimensional differences, no change in specification, and no change to the function of the switch.

**1. Changes Made :**

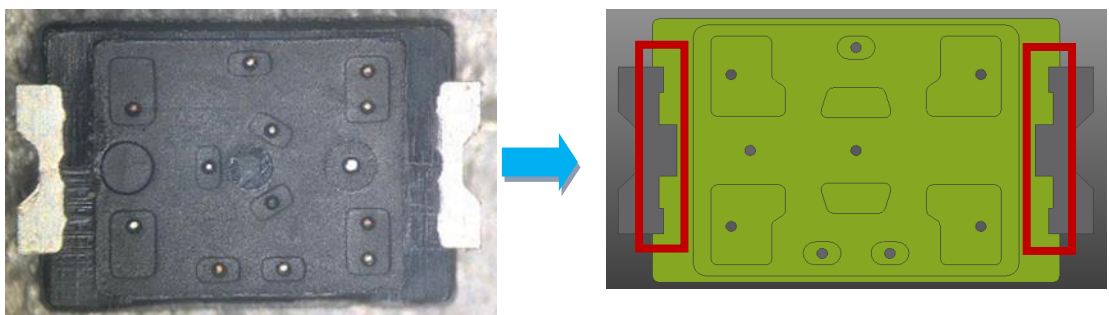
- 1) Reduce location pin size :  $\text{Ø}0.1 \rightarrow \text{Ø}0.08$
- 2) Reduce the number of location pin from 13 to 9



- 3) Remove terminal hole and create a step



- 4) Making the lead terminal's exposed area larger

**C&K**

Office 1007-8, 10/F, Harcourt House, 39 Gloucester Road, Wanchai, Hong Kong  
Tel: +852 3713 5288      www.ckswitches.com

Document subject to change without prior notice

**3. Impact of Change and Qualification**

Impact of Change--- No changes in form-fit-function on the switch

Qualification--- New insertmold and qualification was finished already at 2021 Oct.

**4. Part References affected**

<u>Item Number</u>	<u>Item Description</u>
Y25D31110FP	KXT 311 LHS
Y25D32110FP	KXT 321 LHS
Y25D33110FP	KXT 331 LHS
Y25D35110FP	KXT 341 LHS

**5. Date of application**

Implementation date by Feb 1st , 2022

**6. Conditions of application**

For the customers who buy the above part numbers from C&K, we kindly ask you to acknowledge receipt of this information with your Sales Representative.

**7. Support**

For any question, please contact your C&K sales representative.