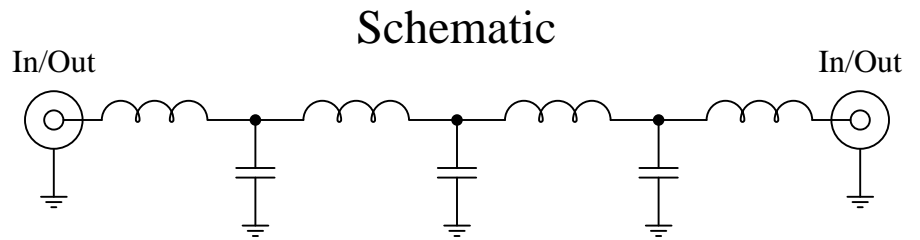


Part Number: CLPFL-0400

Low Pass Range  
DC to 400 MHz



### Features:

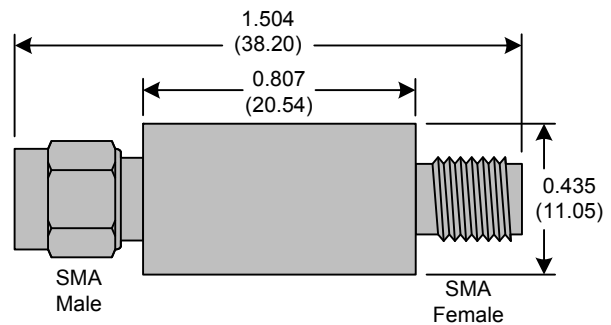
- 7<sup>th</sup> Order Butterworth Response
- 50Ω SMA Connectors

### Applications:

- Test Equipment
- Lab Use

### Maximum Ratings:

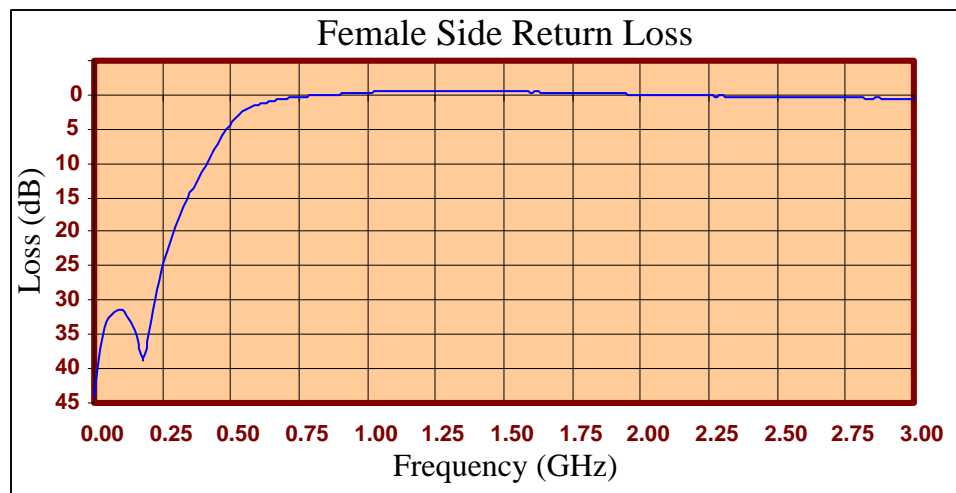
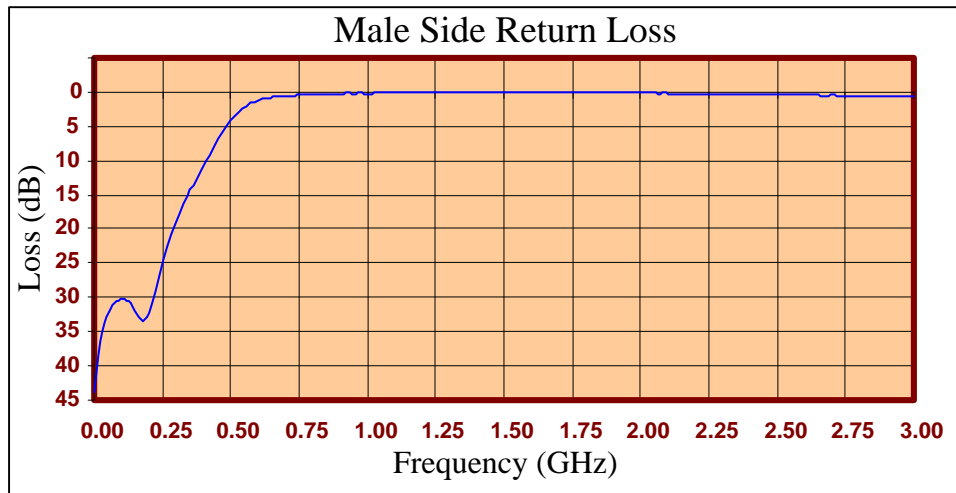
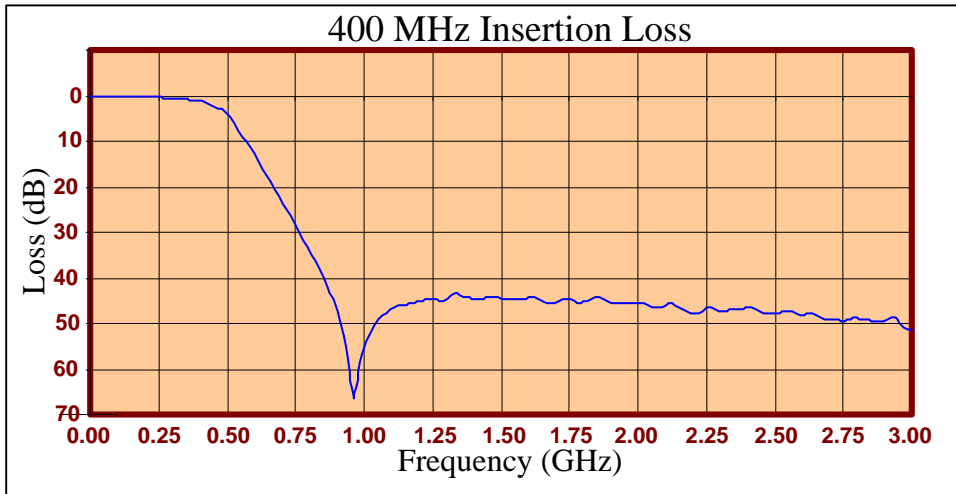
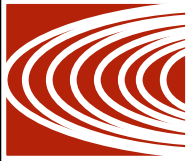
- +36dBm (4 Watts)
- Operating Temperature: -40°C to 85°C
- Storage Temperature: -55°C to 100°C

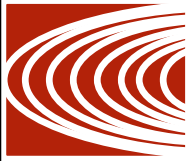


Crystek's new line of Low Pass Filters are designed in a rugged SMA housing. This filter line has excellent out-of-band rejection. Designed for Test Equipment and General Lab Use.

Rev C

Page 1 of 3





FREQ (MHz)	INSERTION LOSS (dB)	Male Return Loss (dB)	Female Return Loss (dB)
0.3	0.07	43.80	44.12
15.3	0.07	38.55	39.01
30.3	0.14	35.01	35.40
45.3	0.15	32.87	33.19
60.3	0.16	31.63	32.28
75.3	0.20	30.87	31.57
90.3	0.19	30.52	31.32
105	0.24	30.34	31.47
120	0.25	30.59	32.13
135	0.27	30.84	33.11
150	0.30	31.93	34.43
165	0.29	32.78	36.50
180	0.32	33.36	38.72
195	0.37	33.01	36.22
210	0.34	31.48	33.14
225	0.42	29.34	29.94
240	0.39	26.83	27.23
255	0.44	24.65	24.73
270	0.49	22.65	22.76
285	0.54	20.83	20.90
300	0.59	19.21	19.21
330	0.65	16.30	16.34
405	1.27	10.20	10.29
450	2.41	6.98	6.99
510	4.63	3.54	3.60
585	11.28	1.39	1.56
705	23.76	0.54	0.57
810	34.75	0.39	0.15
900	47.49	0.21	-0.11
1005	54.08	0.21	-0.36
1245	44.51	0.04	-0.52
1500	44.63	0.04	-0.50
1755	44.87	0.09	-0.31
1995	45.47	0.16	-0.09
2250	46.52	0.25	0.15
2505	47.82	0.38	0.33
2745	49.36	0.55	0.43
3000	51.18	0.67	0.54

**Product Control:**

Crystek Part Number:	CLPFL-0400	Release Date:	04-Aug-2015
Revision Level:	C	Responsible:	K. Piotrowicz

Rev C
Page 3 of 3

