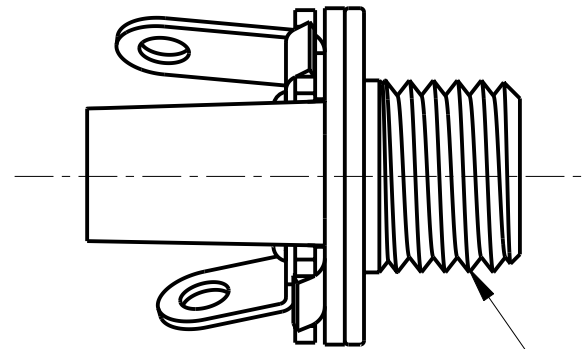
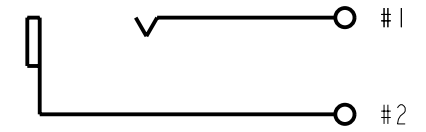


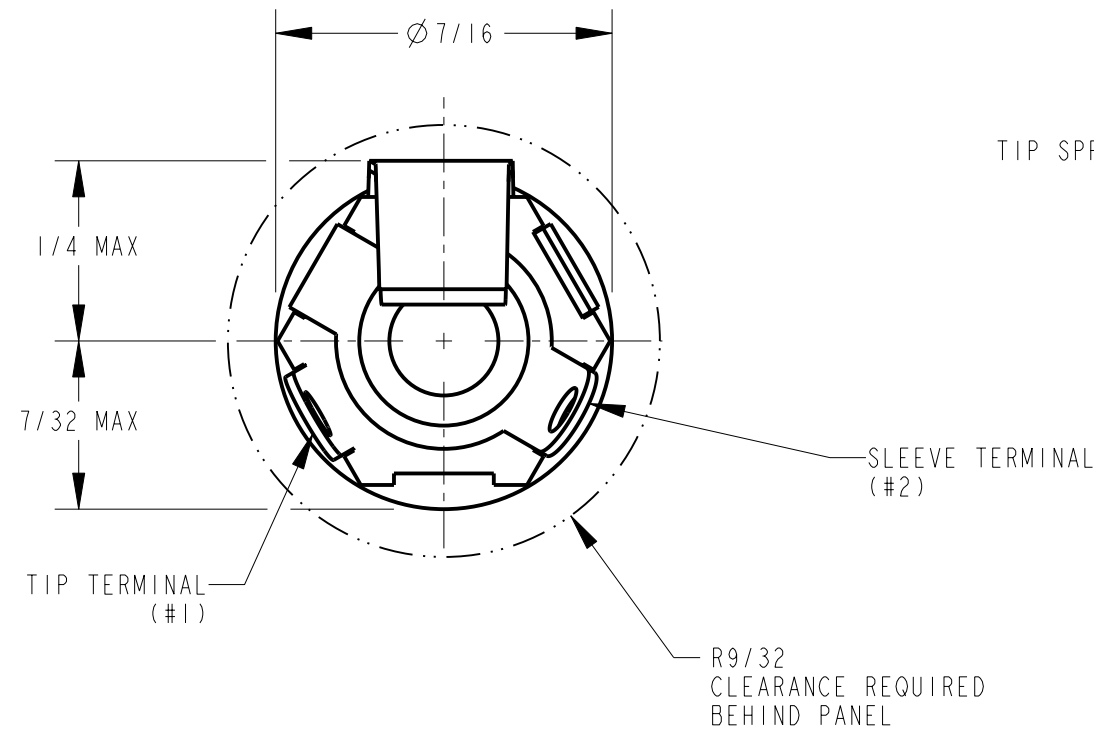
SCALE 3:1



1/4-32 UNEF-2A THREAD



SCHEMATIC CIRCUIT



TIP SPRING

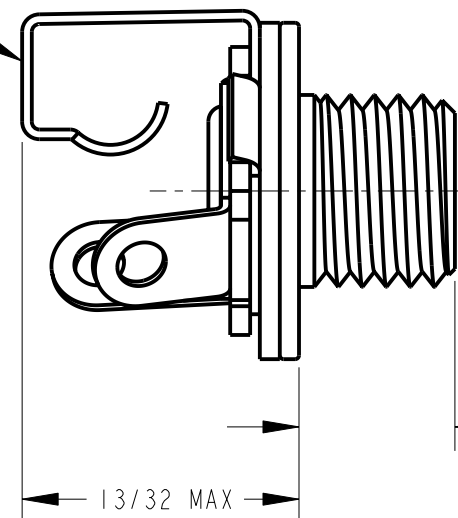
SLEEVE TERMINAL (#2)

1/4 MAX

7/32 MAX

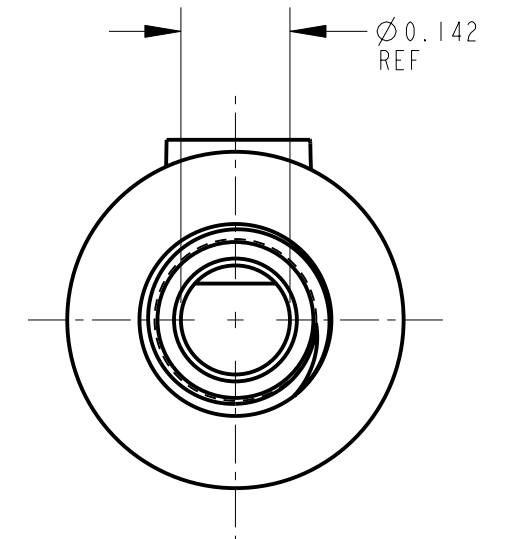
TIP TERMINAL (#1)

R9/32 CLEARANCE REQUIRED BEHIND PANEL



13/32 MAX

0.203 REF



0.142 REF

NOTES:

1. K163A WASHER AND K163B NUT SHIPPED UNASSEMBLED.
2. REQUIREMENTS:
 SPRING LIFE: INSERTION AND WITHDRAWAL: 5000 CYCLES.
 DIELECTRIC STRENGTH: 250 VRMS A.C. BETWEEN TIP SPRING AND BUSHING.
3. MATERIALS:
 BUSHING - BRASS, NICKEL PLATED
 INSULATORS - PHENOLIC & THERMOPLASTIC
 TIP SPRING - NICKEL SILVER, SILVER PLATED
 SLEEVE TERMINAL - BRASS, HOT TIN DIPPED
 WASHER - STEEL, NICKEL PLATED
 NUT - COPPER ALLOY, NICKEL PLATED

CUSTOMER DRAWING

REV	ECO NUMBER	DATE	BY	APVD
D	27196	8-28-13	TO	TJK
C	ECO #20875	7-10-97	MM	JF
B	20627	3-9-96	SG	SG
A	FIRST DRAWN	3-31-94	SG	GHJ
REVISIONS				

★ STAR SYMBOL DENOTES CRITICAL DIMENSION

UNLESS OTHERWISE SPECIFIED

1. ALL DIMENSIONS IN INCHES
 - TWO PLACE DECIMALS ±0.01
 - THREE PLACE DECIMALS ±0.005
 - FRACTIONAL DIMENSIONS ±1/64
 - ANGLES ±1°
 - ALL DIA. CONCENTRIC WITHIN 0.005 T.I.R.

2. FEATURES ON THE SAME CENTERLINE MUST BE ALIGNED WITHIN ±0.002

3. REMOVE ALL BURRS

DO NOT SCALE DRAWING

THIS DRAWING DESCRIBES A DESIGN CONSIDERED PROPRIETARY IN NATURE, DEVELOPED AND MANUFACTURED BY SWITCHCRAFT INC. AND IS RELEASED ON A CONFIDENTIAL BASIS FOR IDENTIFICATION PURPOSES ONLY.									
SIZE		WIDTH		MULT		LBS/M		TEMPER	
FINISH						MATERIAL			
SPEC No.						SPEC No.			
FIRST USED ON				SCALE		Switchcraft [®]			
				4:1					
DATE DRAWN	BY	CHKD	APVD						
31-Mar-94	SG	BD	GHJ						
				4-18-94	4-18-94		SHEET 1 OF 1		
NAME						PART No.		REV	
3.5 MM 2 CONDUCTOR JAX						35PM1		D	

Pro/Engineer CAD File

B

ROUTING 146 112