

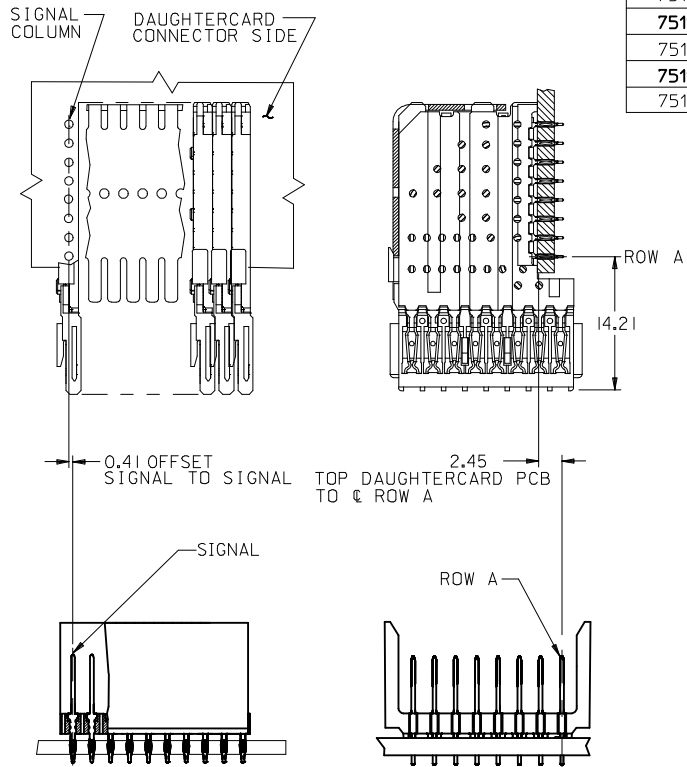
NOTES:

- MATERIALS:
HOUSING - LIQUID CRYSTAL POLYMER (LCP),
GLASS-FILLED, UL 94V-0, COLOR: BLACK
SIGNAL PIN - COPPER ALLOY
- FINISHES:
CONTACT AREA: SELECTIVE GOLD (Au)
PCB TAILS: SELECTIVE MATTE TIN (Sn)
NICKEL (Ni) OVERALL
- THIS PART CONFORMS TO MOLEX PRODUCT SPECIFICATION PS-74031-999
- FOR MIXED CONTACT LENGTHS CONSULT MOLEX FOR AVAILABILITY
- FOR SPECIFIC MATERIAL NUMBERS & MATING INFORMATION REFER TO SHEET 2
- PACKAGE PER PK-74060-003
- EITHER MARK PART WITH PART NUMBER & DATE CODE APPROXIMATELY WHERE SHOWN OR PLACE LABEL ON THE TUBE.
- MAPS (MOLEX ADVANCED PLATING SYSTEM).

THE PRIMARY CARTON WITH A LABEL STATING "ELV AND RoHS COMPLAINT" IS LEAD FREE. CARTONS WITHOUT THIS LABEL MAY CONTAIN LEAD.

LEAD FREE CONVERSION EC NO: UCP2013-0687 DRAWINGS 2012/08/24 CHKD:HWOLF 2012/08/24 APPR:SMILLER 2012/12/14	QUALITY SYMBOLS ▽=0 ▽=0 ▽=0	GENERAL TOLERANCES (UNLESS SPECIFIED)		DIMENSION STYLE MM ONLY		SCALE 2.5:1	DESIGN UNITS METRIC	THIRD ANGLE PROJECTION
				DRAWN BY DATE MBANDURA 2002/10/07		TITLE VHDM LITE 8 ROW OPEN END BACKPLANE SALES ASSEMBLY		
		4 PLACES ± --- ± ---		CHECKED BY DATE NMARTIN 2002/10/07		DOCUMENT NO. SD-75197-001		
		3 PLACES ± --- ± ---		APPROVED BY DATE SMILLER 2012/12/14				
		2 PLACES ± 0.38 ± ---		MATERIAL NO. SEE SHEET 2				
		1 PLACE ± 0.25 ± ---		SIZE C		THIS DRAWING CONTAINS INFORMATION THAT IS PROPRIETARY TO MOLEX INCORPORATED AND SHOULD NOT BE USED WITHOUT WRITTEN PERMISSION		
		0 PLACE ± --- ± ---		ANGULAR ±1/2°				
				DRAFT WHERE APPLICABLE MUST REMAIN WITHIN DIMENSIONS				

PART NUMBER	COLUMN	NUMBER OF SIGNAL PIN	NUMBER OF SHIELD	A	B	M	GOLD THICKNESS MICROMETER	TIN THICKNESS MICROMETER
75197-6001	10	80	0	20.00	18.00	4.75	0.25 MAPS	0.76-152
75197-*001							0.76	
75197-7501	25	200	0	50.00	48.00		0.25 MAPS	
75197-*501							0.76	
75197-6002	10	80	0	20.00	18.00	6.25	0.25 MAPS	
75197-*002							0.76	
75197-7502	25	200	0	50.00	48.00		0.25 MAPS	
75197-*502							0.76	
75197-6003	10	80	0	20.00	18.00	4.25	0.25 MAPS	
75197-*003							0.76	
75197-7503	25	200	0	50.00	48.00		0.25 MAPS	
75197-*503							0.76	
75197-6004	10	80	0	20.00	18.00	5.15	0.25 MAPS	
75197-*004							0.76	
75197-7504	25	200	0	50.00	48.00		0.25 MAPS	
75197-*504							0.76	



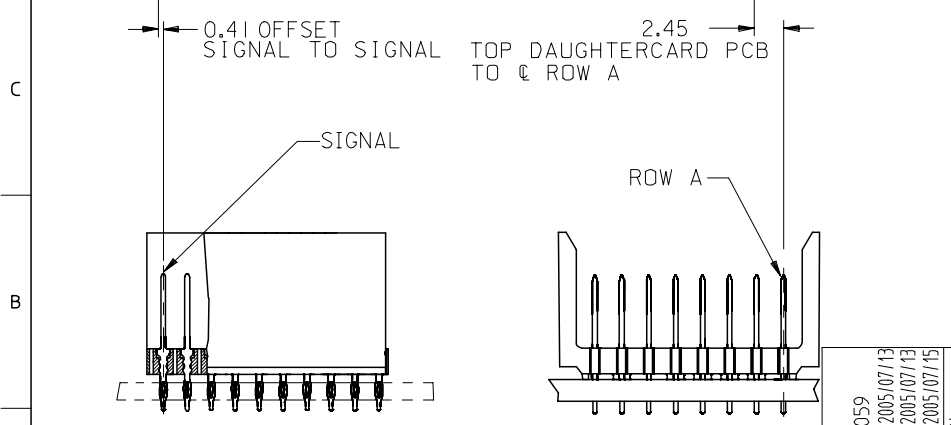
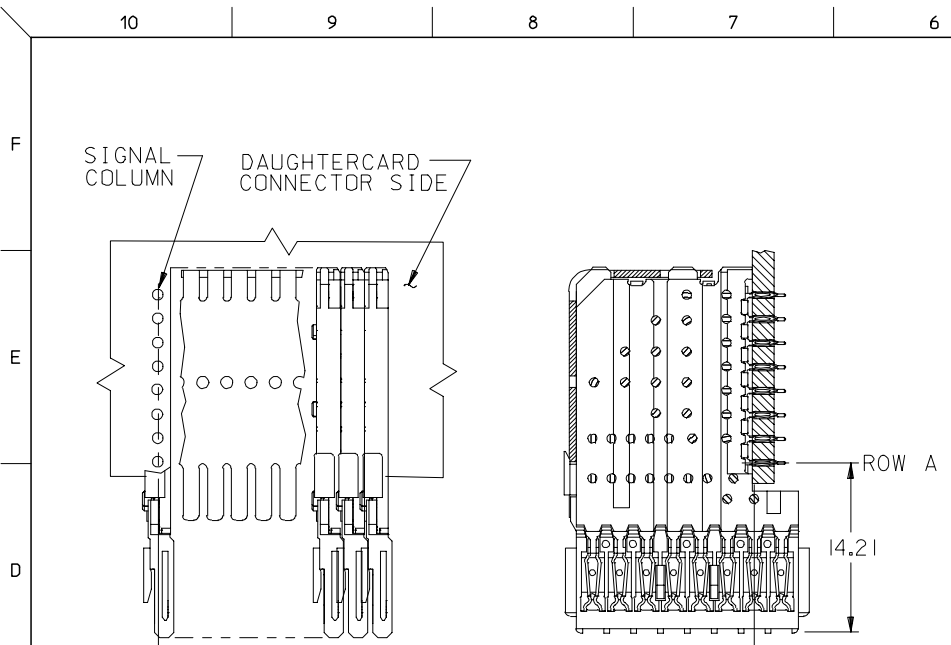
MATERIAL NUMBER ASSIGNMENT

75197- **0*

SEE TABLE

- NUMBER OF COLUMNS/PLATING
- 10 = 10 COLUMN MATTE TIN (FORMERLY TIN/LEAD)
 - 25 = 25 COLUMN MATTE TIN (FORMERLY TIN/LEAD)
 - 60 = 10 COLUMN MATTE TIN (MAPS)
 - 75 = 25 COLUMN MATTE TIN (MAPS)
 - 90 = 10 COLUMN MATTE TIN
 - 85 = 25 COLUMN MATTE TIN

SEE SHEET 1 EC NO: UCP2013-0687 DRAWINGS: 2012/08/24 CHKD:MMOLFE 2012/08/24 APPR:SMILLER 2012/12/14 REV:	QUALITY SYMBOLS	GENERAL TOLERANCES (UNLESS SPECIFIED)	DIMENSION STYLE MM ONLY	SCALE 2.5:1	DESIGN UNITS METRIC	THIRD ANGLE PROJECTION
	▽=0	mm INCH	DRAWN BY DATE MBANDURA 2002/10/07	TITLE	VHDM LITE 8 ROW OPEN END BACKPLANE SALES ASSEMBLY molex DOCUMENT NO. SD-75197-001 SHEET NO. 2 OF 2	
	▽=0	4 PLACES ± --- ± ---	CHECKED BY DATE NMARTIN 2002/10/07			
	▽=0	3 PLACES ± --- ± ---	APPROVED BY DATE SMILLER 2012/12/14			
	▽=0	2 PLACES ± 0.38 ± ---	MATERIAL NO.			
	1 PLACE ± 0.25 ± ---	SIZE				
	0 PLACE ± --- ± ---	DRAFT WHERE APPLICABLE MUST REMAIN WITHIN DIMENSIONS		THIS DRAWING CONTAINS INFORMATION THAT IS PROPRIETARY TO MOLEX INCORPORATED AND SHOULD NOT BE USED WITHOUT WRITTEN PERMISSION		



PART NUMBER	COLUMN	NUMBER OF SIGNAL PIN	NUMBER OF SHIELD	A	B	M	Au (um) THICKNESS	Sn (um) THICKNESS
75197-*001	10	80	0	20.00	18.00	4.75	0.76	0.76-1.52
75197-*501	25	200	0	50.00	48.00		0.76	
75197-*002	10	80	0	20.00	18.00	6.25	0.76	
75197-*502	25	200	0	50.00	48.00		0.76	
75197-*003	10	80	0	20.00	18.00	4.25	0.76	
75197-*503	25	200	0	50.00	48.00		0.76	
75197-*004	10	80	0	20.00	18.00	5.15	0.76	
75197-*504	25	200	0	50.00	48.00		0.76	

MATERIAL NUMBER ASSIGNMENT

75197- ** **
 SEE TABLE
 NUMBER OF COLUMNS/PLATING
 10 = 10 COLUMN TIN/LEAD
 25 = 25 COLUMN TIN/LEAD
 90 = 10 COLUMN MATTE TIN
 85 = 25 COLUMN MATTE TIN

SEE SHEET 1
 EC NO: UCP2006-0059
 DRWN: KMULVEY 2005/07/13
 CHKD: 2005/07/13
 APPR: SREED 2005/07/15

QUALITY SYMBOLS	DESCRIPTION
	=0
	=0

	GENERAL TOLERANCES (UNLESS SPECIFIED)	
	MM	INCH
4 PLACES	± ---	± ---
3 PLACES	± ---	± ---
2 PLACES	± ---	± ---
1 PLACE	± ---	± ---
ANGULAR ±1/2°		

DIMENSION STYLE	
MM ONLY	
DRAWN BY	DATE
MBANDURA	2002/10/07
CHECKED BY	DATE
NMARTIN	2002/10/07
APPROVED BY	DATE
CBIXLER	2002/10/07

SCALE	DESIGN UNITS	THIRD ANGLE PROJECTION
2.5:1	METRIC	
TITLE		
VHM LITE 8 ROW OPEN END BACKPLANE SALES ASSEMBLY		
MATERIAL NO.		SHEET NO.
SEE CHART		2 OF 2
DOCUMENT NO.		
SD-75197-001		

THIS DRAWING CONTAINS INFORMATION THAT IS PROPRIETARY TO MOLEX INCORPORATED AND SHOULD NOT BE USED WITHOUT WRITTEN PERMISSION