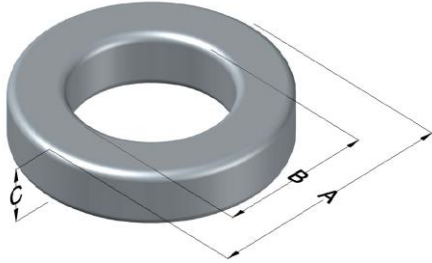




0076256A7

110 Delta Drive
 Pittsburgh, PA 15238
 NAFTA Sales: (1)800-245-3984
 HK Sales : (852)3102-9337
 magnetics@spang.com



Kool M μ Hf Permeability (μ)	A _L (nH/T ²)	Core Marking			Coating Color
		Lot Number	Part Number	Inductance Grade	
26	36 \pm 8%	XXXXXX	76256A7	N/A	Black

Dimensions	Uncoated		Coated Limits			Packaging
	(mm)	(in)	(mm)	(in)		
OD (A)	39.88	1.570	40.77	1.605	max	Cardboard cut-outs Box Qty= 180 pcs
ID (B)	24.13	0.950	23.32	0.918	min	
HT (C)	14.48	0.570	15.37	0.605	max	

Electrical Characteristics			Physical Characteristics						
Watt Loss @ 100kHz, 100mT max (mW/cm ³)	DC Bias min (oersteds)		Voltage Breakdown wire to wire min (V _{AC})	Break Strength min (kg)	Window Area W _a (mm ²)	Cross Section A _e (mm ²)	Path Length L _e (mm)	Volume V _e (mm ³)	Est. Weight (g)
	80%	50%							
550	130	245	3000	126.0	427	107	98.5	10,600	63.5

Winding Information					Temperature Rating	
Winding Length Per Turn				Wound Coil Dimensions (mm)		Curie Temp: 500°C
Winding Factor	(mm)	Winding Factor	(mm)	40% Winding Factor		Coating Temp (Continuous up to): 200°C
				OD	45.6	
				HT	22.6	Notes:
				Max OD	48.0	
				Max HT	32.2	
0%	48.2	40%	60.2	Completely Full Window		
20%	54.3	45%	62.0	Surface Area (mm ²)		
25%	55.7	50%	63.6	Unwound Core		4,900
30%	57.1	60%	67.4	40% Winding Factor		7,200
35%	58.9	70%	71.7			

