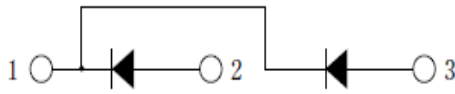


FRD

200A Avg 600 Volts

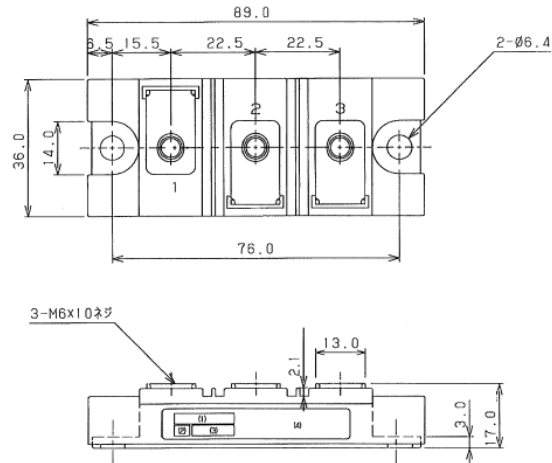
PC201FKN6

■回路図 CIRCUIT



■外形寸法図 OUTLINE DRAWING

Dimension: [mm]



■最大定格 Maximum Ratings

| 項目<br>Parameter                                    | 記号<br>Symbol    | 耐圧クラス Grade |  | 単位<br>Unit |
|--|-----------------|-------------|--|------------|
|  |                 | PC201FKN6   |  |            |
| くり返しピーク逆電圧<br>Repetitive Peak Reverse Voltage      | *1<br>$V_{RRM}$ | 600         |  | V          |
| 非くり返しピーク逆電圧<br>Non Repetitive Peak Reverse Voltage | *1<br>$V_{RSM}$ | —           |  | V          |

| 項目<br>Parameter                                  | 記号<br>Symbol      | 条件<br>Conditions  | 定格値<br>Max.Rated Value | 単位<br>Unit       |     |
|--|-------------------|---|------------------------|------------------|-----|
| 平均整流電流<br>Average Rectified Output Current       | *1<br>$I_{O(AV)}$ | 商用周波数 180° 通電 $T_c=105^{\circ}C$<br>Half Sine Wave                | 200                    | A                |     |
| 実効順電流<br>RMS Forward Current                     | *1<br>$I_{FRMS}$  |   | 314                    | A                |     |
| サージ順電流<br>Surge Forward Current                  | *1<br>$I_{FSM}$   | 50Hz 正弦半波, 1サイクル, 非くり返し<br>Half Sine Wave, 1Pulse, Non-Repetitive | 2000                   | A                |     |
| 電流二乗時間積<br>I Squared t                           | *1<br>$I^2t$      | 2~10ms  | 20000                  | A <sup>2</sup> s |     |
| 動作接合温度範囲<br>Operating Junction Temperature Range | $T_{jw}$          |   | -40 ~ +150             | °C               |     |
| 保存温度範囲<br>Storage Temperature Range              | $T_{stg}$         |   | -40 ~ +125             | °C               |     |
| 絶縁耐圧<br>Isolation Voltage                        | $V_{iso}$         | 端子—ベース間, AC 1分間<br>Terminal to Base, AC 1min                      | 2500                   | V                |     |
| 締付トルク<br>Mounting Torque                         | ベース部<br>Mounting  | F<br>サマルコパウト <sup>®</sup> 塗布<br>Greased                           | M6                     | 2.5 ~ 3.5        | N・m |
|  | 主端子部<br>Terminal  |   | M6                     | 2.5 ~ 3.5        | N・m |

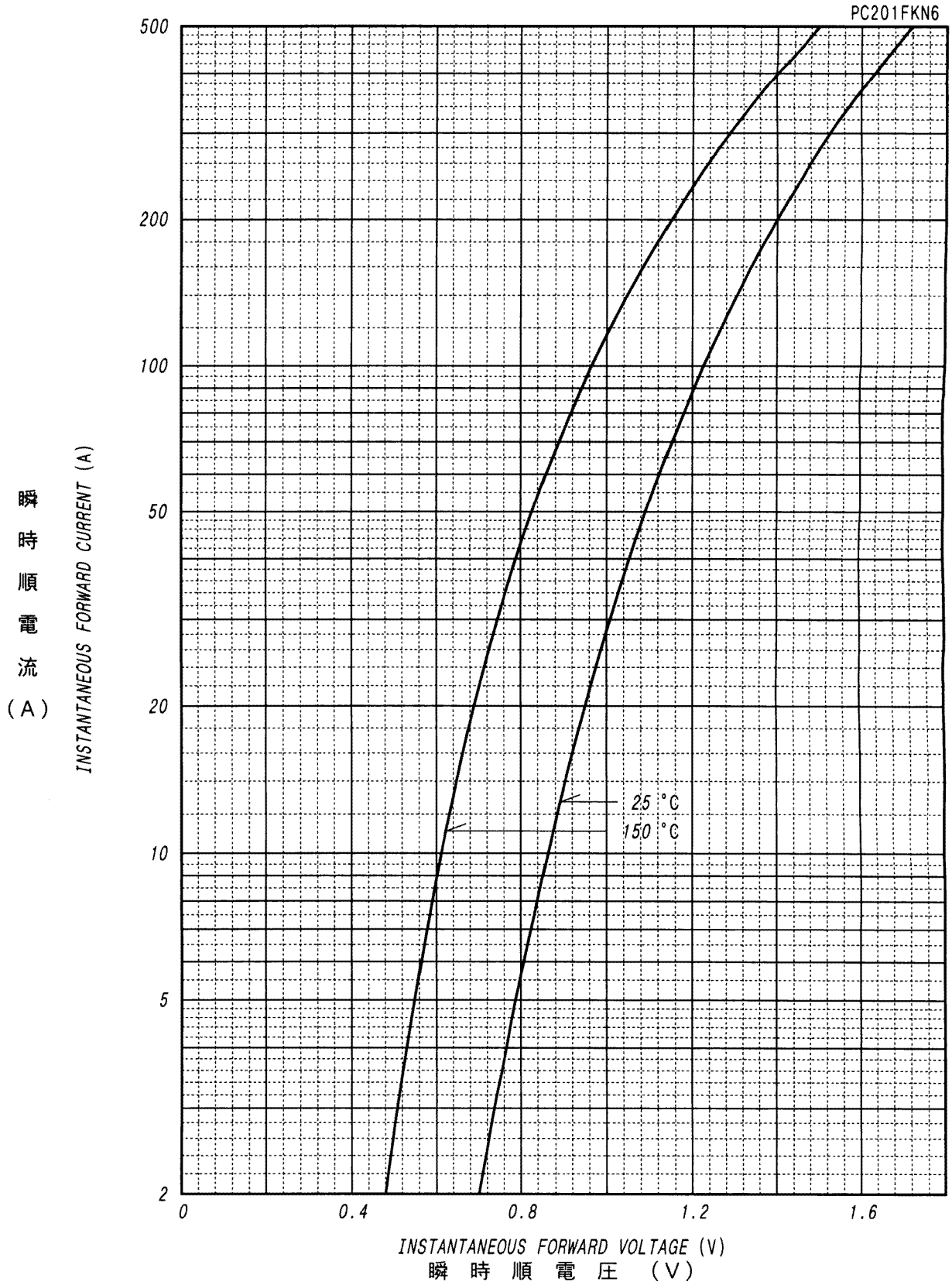
■電気的特性 Electrical Characteristics

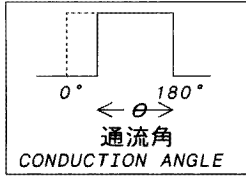
| 項目<br>Parameter                | 記号<br>Symbol        | 条件<br>Conditions   | 特性値 (最大)<br>Maximum Value | 単位<br>Unit |
|--------------------------------|---------------------|--|---------------------------|------------|
| ピーク逆電流<br>Peak Reverse Current | *1<br>$I_{RM}$      | $T_j=150^{\circ}C, V_{RM}=V_{RRM}$                       | 10                        | mA         |
| ピーク順電圧<br>Peak Forward Voltage | *1<br>$V_{FM}$      | $T_j=25^{\circ}C, I_{FM}=200A$                           | 1.40                      | V          |
| 逆回復時間<br>Reverse Recovery Time | *1<br>$t_{rr}$      | $T_j=25^{\circ}C, I_{FM}=10A, -di/dt=50A/\mu s$          | 110                       | ns         |
| 熱抵抗<br>Thermal Resistance      | *1<br>$R_{th(j-c)}$ | 接合部—ケース間<br>Junction to Case                             | 0.15                      | °CW        |
| 接触熱抵抗<br>Thermal Resistance    | $R_{th(c-f)}$       | ケースフィン間, サマルコパウト <sup>®</sup> 塗布<br>Case to Fin, Greased | 0.1                       | °CW        |

質量 --- 約 150g  
Approximate Weight

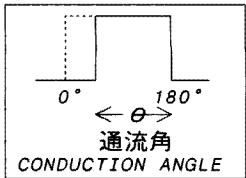
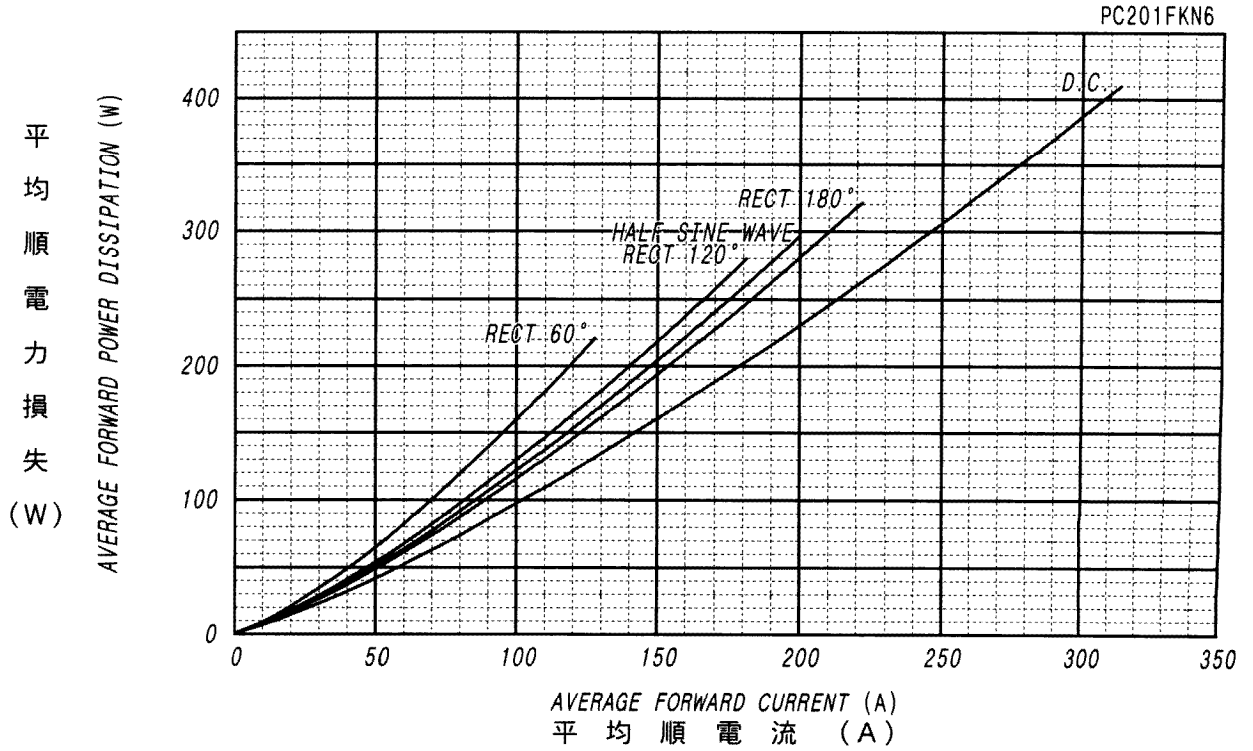
\*1: 1アーム当りの値 Value Per 1 Arm.

順電圧特性  
FORWARD CURRENT VS. VOLTAGE

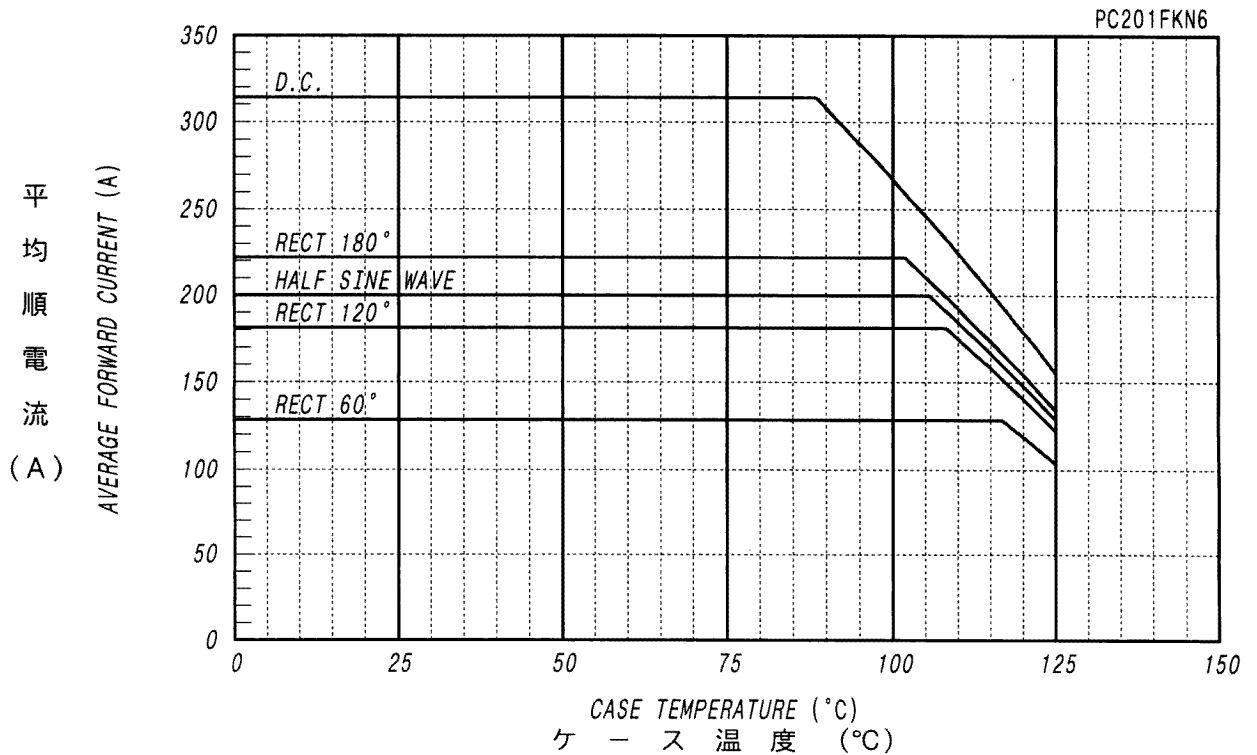




平均順電力損失特性  
AVERAGE FORWARD POWER DISSIPATION



平均順電流 - ケース温度定格  
AVERAGE FORWARD CURRENT VS. CASE TEMPERATURE



サージ順電流定格  
SURGE CURRENT RATINGS

f=50Hz, Half Sine Wave, Non-Repetitive, Tj=150°C

PC201FKN6

サ  
ー  
ジ  
順  
電  
流  
(A)

