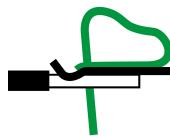
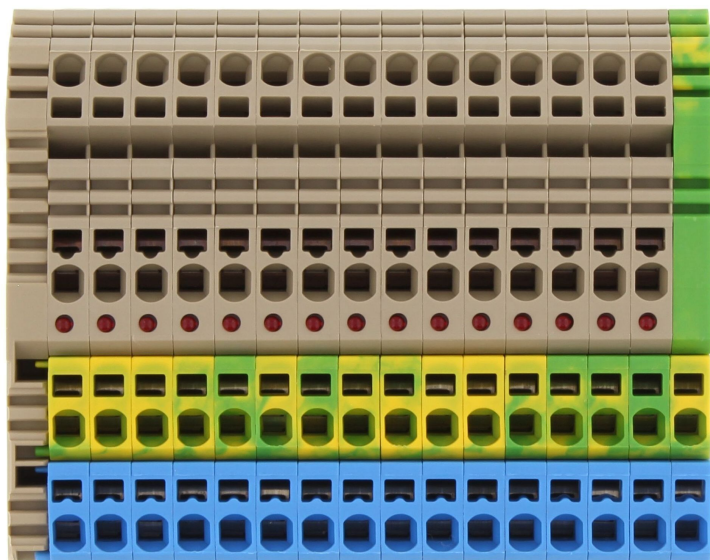


3555.2

ZIZA 1,5/3/16 POL/LED(RD)/24V/PE



Initiator terminal / actuator terminal, Tension-spring connection, Mounting type: Mounting rail TS 35/7.5, Rated cross-section: 1.5 mm<sup>2</sup>, Width: 91.8 mm, Colour: Multi-coloured

## Business data

Packaging unit	1
Quantity unit	PC
Weight per piece (not including packaging)	6.4 g
Weight per piece (including packaging)	7 g
Unit of weight	G
Customs number	85369010
Country of origin	DE
Product description	Initiator terminals / actuator terminals

3555.2

ZIZA 1,5/3/16 POL/LED(RD)/24V/PE

## Technical data

### Dimensions

Length	68.7 mm
Width	91.8 mm
Height TS 35/7.5	40.5 mm
Pitch	5 mm

### Ratings

Rated voltage	400 V
Rated current	17.5 A
Rated cross-section	1.5 mm <sup>2</sup>
Rated impulse voltage	4 kV
Overvoltage category	III
Contamination degree	3
Maximum power dissipation for nominal condition	0.56 W

### Connection data

Connection principle	Tension-spring connection
Connections	4 per signal
Number of terminals per level	4
Number of levels	1
Wire cross-section single-core (rigid) / stranded, min.	0.5 mm <sup>2</sup>
Wire cross-section single core (rigid)/stranded, max.	2.5 mm <sup>2</sup>
Wire cross-section stranded, min.	0.5 mm <sup>2</sup>
Wire cross-section stranded, max.	2.5 mm <sup>2</sup>
Wire cross-section stranded with wire-end ferrules, min.	0.5 mm <sup>2</sup>
Wire cross-section stranded with wire-end ferrules, max.	1.5 mm <sup>2</sup>
Wire cross-section AWG, min.	26
Wire cross-section AWG, max.	14
Stripping length	8 mm

**3555.2**

**ZIZA 1,5/3/16 POL/LED(RD)/24V/PE**

---

## Technical data

---

### Materials

---

Insulation housing	Polyamide 6.6, Polyamide 6.6
Flammability class UL 94	V-0
Working temperature, min.	-40 °C
Working temperature, max.	120 °C

### Further technical data

---

Mounting type	Mounting rail TS 35/7,5
Gauge plug acc. to EN 60 947-1	A1
Number of cross-connection channels	1
End plate required	✓
PE connection available	✓
Can be cross-connected	✓
Colour of lamp	Red

### Print

---

Colour	Multi-coloured
--------	----------------

### Environmental Product Compliance

---

REACH Conform	yes
REACH Reference date	2022-01-17
REACH Candidate Substance Note	No
RoHS Conform	yes

**3555.2**

**ZIZA 1,5/3/16 POL/LED(RD)/24V/PE**

---

## Approvals

---

### CSA approval

---

CSA approval	C22.2 No 158
CSA approval granted	yes
CSA Usegroup C: rated voltage	300 V
CSA Usegroup C: rated current	12,5 A
CSA wire cross-section AWG, min.	26
CSA wire cross-section AWG, max.	14
CSA stripping length	8 mm

### CSAus approval

---

CSAus approval	UL 1059
CSAus approval granted	yes
CSAus Usegroup C: rated voltage	300 V
CSAus Usegroup C: rated current	12,5 A
CSAus wire cross-section AWG, min.	26
CSAus wire cross-section AWG, max.	14
CSAus stripping length	8 mm

### cUL Recognized

---

cUL approval	C22.2 No 158
cUL Usegroup C: rated voltage	300 V
cUL Usegroup C: rated current	12,5 A
cUL wire cross-section single-core (rigid) AWG, min.	26
cUL wire cross-section single-core (rigid) AWG, max.	14
cUL wire cross-section stranded AWG, min.	26
cUL wire cross-section stranded AWG, max.	14
cUL wire material	Cu
cUL Recognized	yes

---

**3555.2**

**ZIZA 1,5/3/16 POL/LED(RD)/24V/PE**

---

## Approvals

---

### German Lloyd approval

---

GL approval	IEC 60947-7-1:2009, IEC 60947-7-2:2009
GL approval granted	yes
GL rated voltage	400 V
GL rated current	17,5 A
GL wire cross-section single core (rigid), min.	2.5 mm <sup>2</sup>
GL wire cross-section single-core (rigid), max.	1.5 mm <sup>2</sup>
GL wire cross-section, min.	1.5 mm <sup>2</sup>
GL wire cross-section stranded, max.	2.5 mm <sup>2</sup>
GL environmental category	C

---

### KEMA KEUR approval

---

KEMA KEUR approval	60947-7-1:2009, EN 60947-7-2:2009
KEMA KEUR approval granted	yes
KEMA rated voltage	400 V
KEMA rated current	17,5 A
KEMA rated impulse voltage	4 kV
KEMA wire cross-section single core (rigid), min.	0.5 mm <sup>2</sup>
KEMA wire cross-section single-core (rigid), max.	2.5 mm <sup>2</sup>
KEMA wire cross-section stranded, min.	0.5 mm <sup>2</sup>
KEMA wire cross-section stranded, max.	2.5 mm <sup>2</sup>

---

**3555.2**

**ZIZA 1,5/3/16 POL/LED(RD)/24V/PE**

---

## Approvals

---

### UL Recognized

---

UL approval	UL 1059
UL Usegroup C: rated voltage	300 V
UL Usegroup C: rated current	12,5 A
UL wire cross-section single-core (rigid) AWG, min.	26
UL wire cross-section single-core (rigid) AWG, max.	14
UL wire cross-section stranded AWG, min.	14
UL wire cross-section stranded AWG, max.	26
UL wire material	Cu
UL factory wiring	yes
UL field wiring	yes
UL Recognized	yes

---

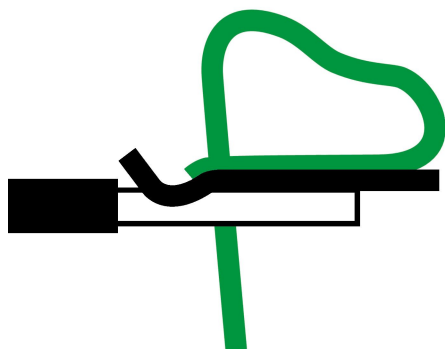
3555.2

ZIZA 1,5/3/16 POL/LED(RD)/24V/PE

---

## Media

---

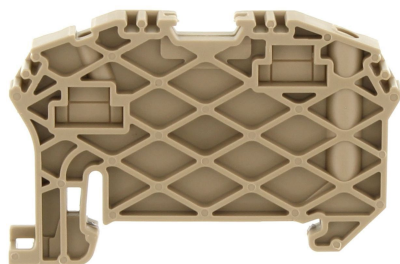


3555.2

ZIZA 1,5/3/16 POL/LED(RD)/24V/PE

## Accessories

### End stop



End stop, Mounting type: Mounting rail TS 35/7.5 and TS 35/15, Width: 6 mm, Colour: Beige

#### General order data

Product number:	Article name	GTIN (EAN)	Packaging unit
3748.2	ZES 35 BG	4044211060572	50

### Test adapter



Test adapter, Pitch size: 5.1 mm, Colour: Beige

#### General order data

Product number:	Article name	GTIN (EAN)	Packaging unit
17034.2	ZTA 1,5	4044211155452	10 ST



3555.2

ZIZA 1,5/3/16 POL/LED(RD)/24V/PE

## Accessories

### Insulated cross-connector



Insulated cross-connector, No. of poles: 2,  
Mounting type: Plug in, Width: 9.1 mm, Rated  
cross-section: 2.5 mm<sup>2</sup>, Colour: Yellow

#### General order data

Product number:	Article name	GTIN (EAN)	Packaging unit
3710.8	ZQI 2,5/2 YE	4044211060282	50



Insulated cross-connector, No. of poles: 99,  
Mounting type: Plug in, Width: 500 mm,  
Rated cross-section: 2.5 mm<sup>2</sup>, Colour: Yellow

#### General order data

Product number:	Article name	GTIN (EAN)	Packaging unit
3719.8	ZQI 2,5/0,5 m/99 Pole YE	4044211060374	2

**3555.2**

**ZIZA 1,5/3/16 POL/LED(RD)/24V/PE**

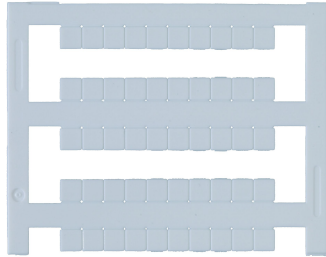
---

## Accessories

---

### Quick marking

---



Terminal marker / Pocket Maxicard, Length: 5 mm, Width: 5 mm, Colour: White

---

### General order data

Product number:	Article name	GTIN (EAN)	Packaging unit
4600.7	PMC SB 5/50 WH	4044211088903	500 ST

---

### Screwdriver

---



Screwdriver with bare blade, Colour: Black-grey

---

### General order data

Product number:	Article name	GTIN (EAN)	Packaging unit
1085.0	SDB 0,5x3,0	4044211014643	1 ST

---