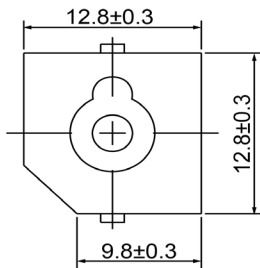
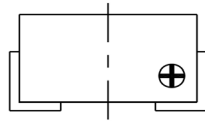


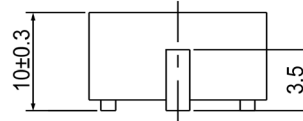
TOP VIEW



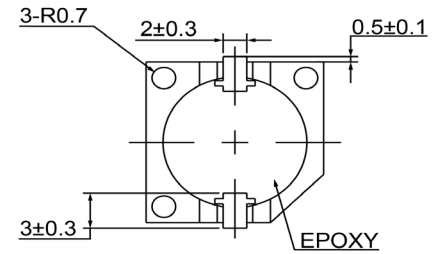
SIDE VIEW (1)




SIDE VIEW (2)



BOTTOM VIEW



Specifications			Notes	Revision History						
Description	Value	Unit		Version	Description	Date	Approved			
Technology	Electro-Mechanical		1) All dimensions are in mm unless otherwise noted 2) All parts meet RoHS 	1	Released from Engineering	10/21/2013	J.S			
Resonant Frequency	2,300	(Hz)								
Rated Voltage	12	(V)								
SPL @ 10cm	85	(dBA)								
Tone	Single									
Mount Type	Surface Mount									
Voltage Range	8 ~ 15	(V)								
Max Rated Current	30	(mA)								
Housing Material	PPS									
Operating Temperature	-30 ~ +70	°C								
Storage Temperature	-40 ~ +85	°C								
Weight	2	(g)								
				Drawn by	Date	Checked by	Date	Approved by	Date	
				A.B.	10/21/2013	C.E.	10/21/2013	J.S	10/21/2013	
DB UNLIMITED				Electro-Mechanical Indicator			IE122312-5			