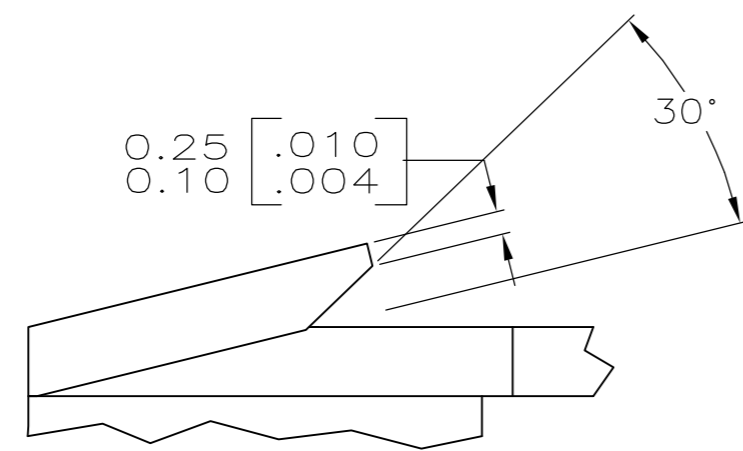
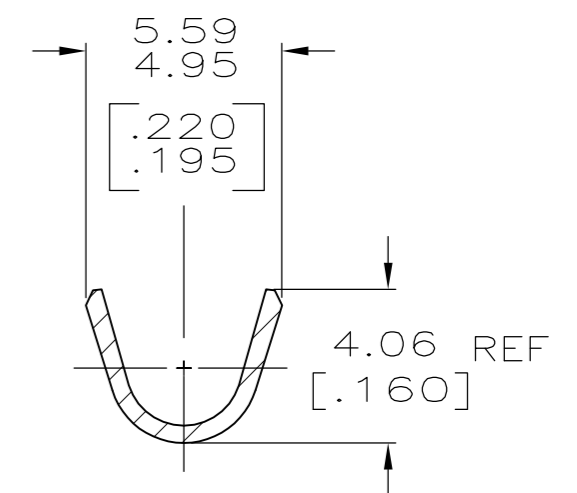
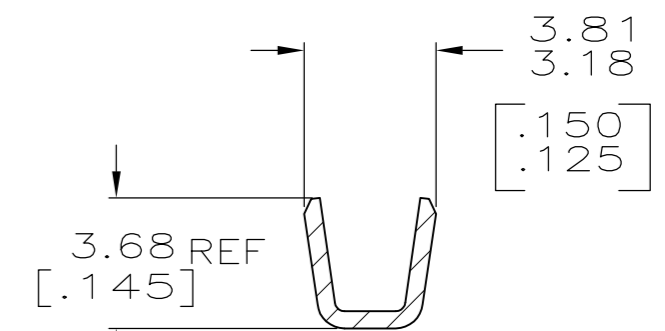
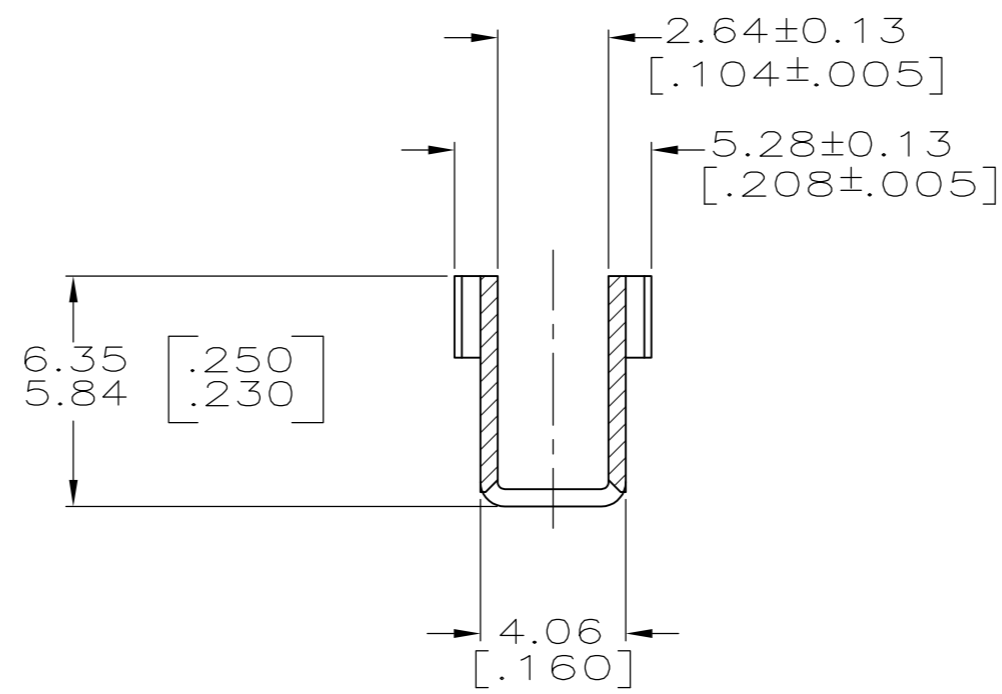
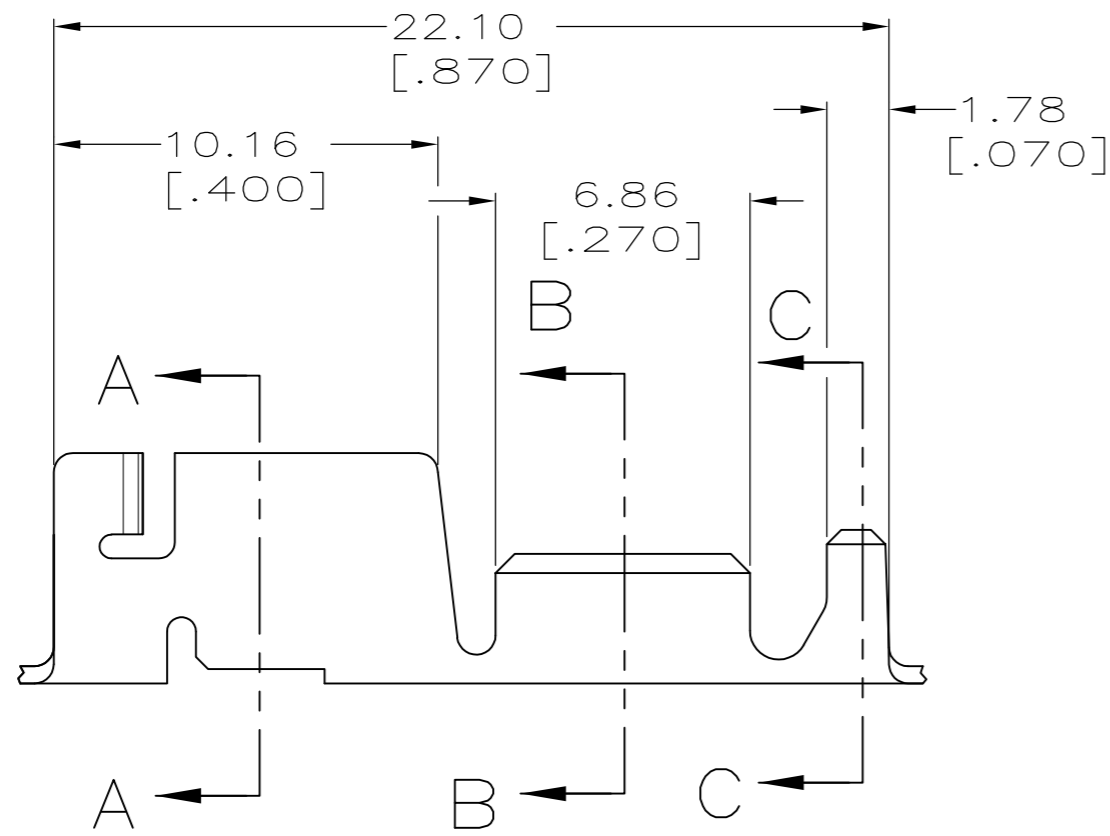
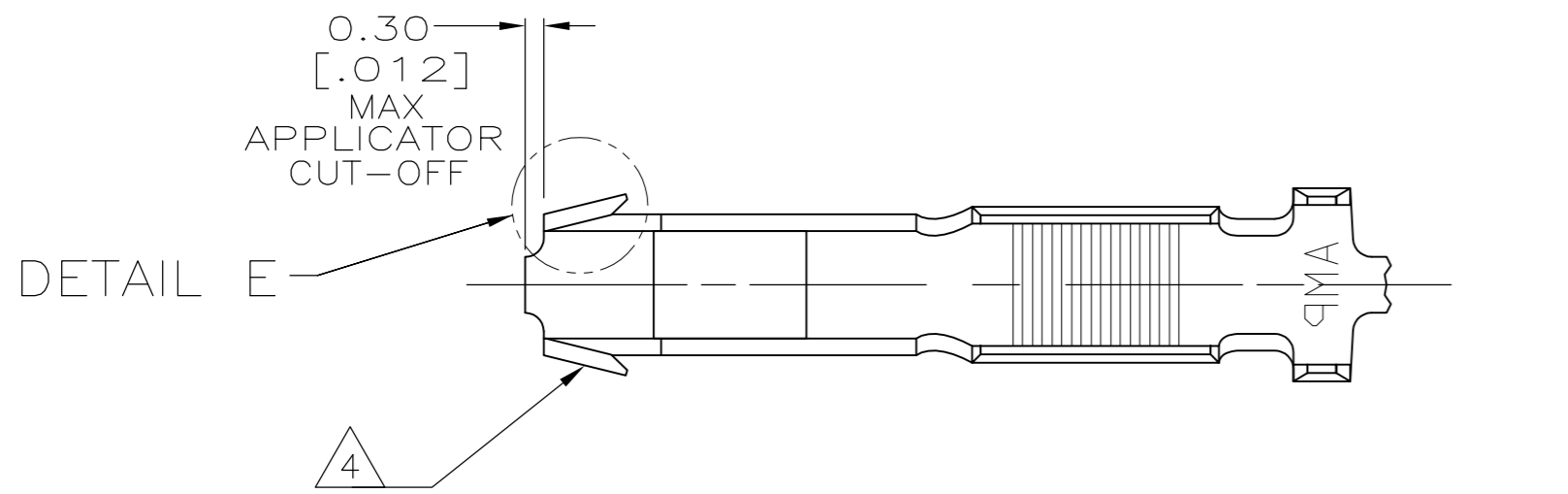
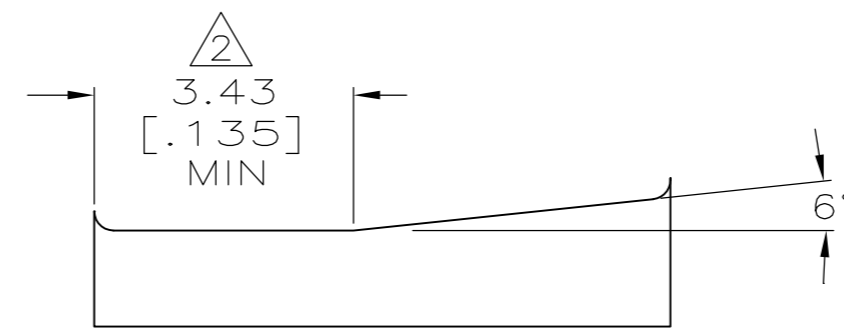


THIS DRAWING IS UNPUBLISHED. RELEASED FOR PUBLICATION
 © COPYRIGHT - By - ALL RIGHTS RESERVED.

LOC	DIST	REVISIONS					
		P	LTR	DESCRIPTION	DATE	DWN	APVD
AF	50			REVISED PER ECR-14-006300	28AUG2014	MKD	RRP



DETAIL E
SCALE 20:1



CRIMP CONFIGURATION

- CONTINUOUS STRIP ON REELS WITH TERMINALS LOCATED ON 23.75 [.935] CENTERS.
- MEASURE CRIMP HEIGHT IN THIS AREA.
- FORMULA TO CALCULATE CRIMP HEIGHT:

$$X = \frac{Y + 10100}{187500} \quad Y = \text{CMA} \quad X = \text{CRIMP HEIGHT}$$
- HIGH RETENTION FEATURE.

1.90-3.18 DIA [.075-.125]	1500-4200 CMA	1217671-1
INSULATION RANGE	WIRE RANGE	PART NUMBER

THIS DRAWING IS A CONTROLLED DOCUMENT.		DWN	JR RUTH	29JUN01	 TE Connectivity			
DIMENSIONS: mm [INCHES]		CHK	G PORTA	29JUN01				
TOLERANCES UNLESS OTHERWISE SPECIFIED:		APVD	G PORTA	29JUN01				
0 PLC ± - 1 PLC ± - 2 PLC ± 0.25 [.010] 3 PLC ± - 4 PLC ± - ANGLES ± -		PRODUCT SPEC	108-2008					
MATERIAL	FINISH	APPLICATION SPEC	114-2019		SIZE	CAGE CODE	DRAWING NO	RESTRICTED TO
H03 TIN-BRASS	POST TIN	WEIGHT	-		A2	00779	C=1217671	-
CUSTOMER DRAWING					SCALE	5:1	SHEET	1 of 1
					REV	D		