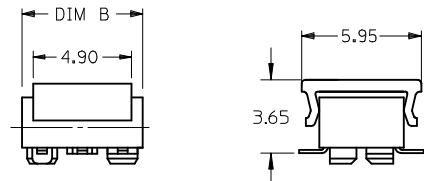
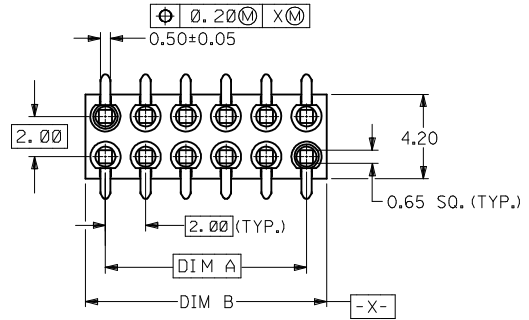
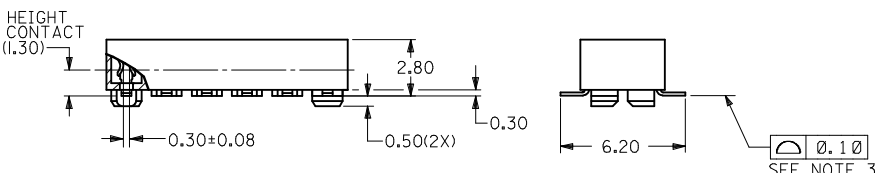
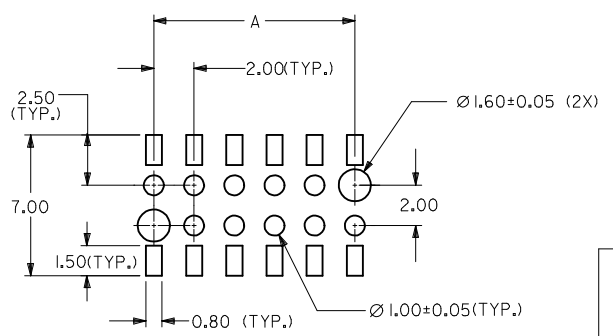


CKT. SIZE	DIM. A	DIM. B
4	2.00	4.00
6	4.00	6.00
8	6.00	8.00
10	8.00	10.00
12	10.00	12.00
14	12.00	14.00
16	14.00	16.00
18	16.00	18.00
20	18.00	20.00
22	20.00	22.00
24	22.00	24.00
26	24.00	26.00
28	26.00	28.00
30	28.00	30.00
32	30.00	32.00
34	32.00	34.00
36	34.00	36.00
38	36.00	38.00
40	38.00	40.00
42	40.00	42.00
44	42.00	44.00



PARTS TO BE PACK WITH CAP (12 CKT SHOWN)



RECOMMENDED SOLDER PAD DESIGN

PART NO. LEGEND

87263 - * * * *

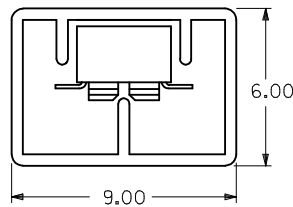
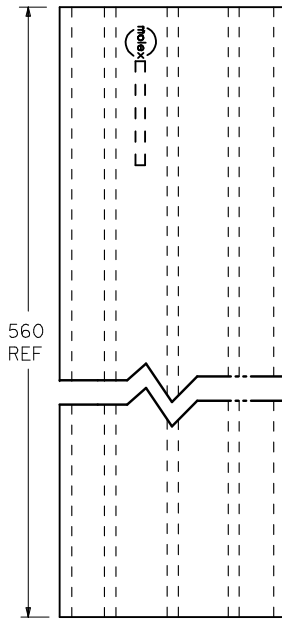
CIRCUIT SIZE

PLATING OPTION
 3 - 0.38um MIN. GOLD
 5 - 0.76um MIN. GOLD
 6 - (0.13-0.38)um GOLD FLASH

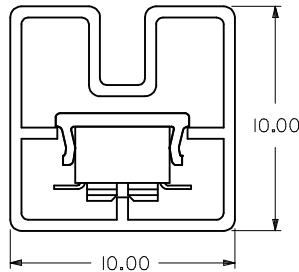
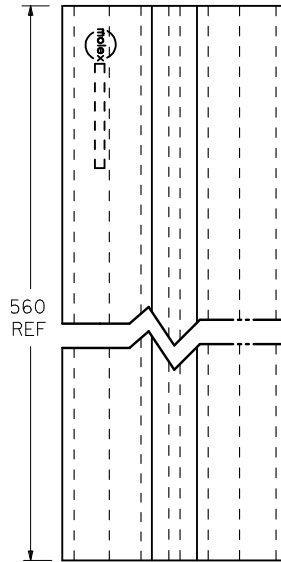
PACKAGING
 0 - W/CAP IN TUBE (SEE SHEET 2)
 2 - W/O CAP IN TUBE (SEE SHEET 2)
 8 - W/O CAP IN TAPE & REEL (SEE SHEET 3)
 9 - W/CAP IN TAPE & REEL (SEE SHEET 3)

- NOTES:
- FOR ILLUSTRATION PURPOSES, DRAWINGS SHOWS PART WITH 12 CIRCUIT SIZE
 - PLATING:
 POST PLATING - SELECTIVE GOLD (SEE LEGEND) AT CONTACT AREA, AND 1.27um MIN. SELECTIVE TIN AT SOLDER AREA BOTH OVER 1.27um MIN. NICKEL OVERALL
 - CO-PLANARITY OF P.C TAIL TO BE MEASURED BY RESTING THE PART ON A FLAT GAGE SURFACE.
 - PRODUCT SPECIFICATION PS-87263 APPLIES
 - CAP: HIGH TEMPERATURE THERMOPLASTIC, UL RATED 94V-0, SUITABLE FOR SURFACE-MOUNT SOLDERING PROCESS.
 COLOR: BLACK
 - POSITION OF CAP TO BE CENTRAL WITH RESPECT TO DIMENSION "A"
 - CONTACT FACTORY FOR DETAIL ON THIS PART NO.
 - PARTS SHALL BE PACKED IN MOISTURE BARRIER BAG
 - P/N 87263-3686 TO BE PACKED IN EMBOSSED TAPE TYPE B1
 - PACKAGING SPECIFICATION FOR TAPE AND REEL: PK-87263-300

ADD NOTE 10 EC NO: S2016-1073 DRWG: MEMARLY 2015/11/03 CHKD: SCHEONG 2016/06/03 APPR: KHL IM 2016/06/06	DESCRIPTION REV	QUALITY SYMBOLS	GENERAL TOLERANCES (UNLESS SPECIFIED)	DIMENSION STYLE	SCALE	DESIGN UNITS	THIRD ANGLE PROJECTION
		$\nabla_A = 0$ $\nabla_B = 0$ $\nabla_C = 0$	mm INCH	MM ONLY	NTS	METRIC	
		4 PLACES ± --- ± --- 3 PLACES ± --- ± --- 2 PLACES ± 0.20 ± --- 1 PLACE ± --- ± --- 0 PLACE ± ±	DRAWN BY DATE CHECKED BY DATE APPROVED BY DATE	TITILE MGRID, B/ENTRY RECEPT. 2.80MM HT. W/LOC. PEGS W/CAP, SMT			
		ANGULAR ± 3 ° DRAFT WHERE APPLICABLE MUST REMAIN WITHIN DIMENSIONS	MATERIAL NO. SEE TABLE SIZE A3	DOCUMENT NO. SD-87263-**2* SHEET NO. 1 OF 4			



P/N 87263-***2*



P/N 87263-***0*

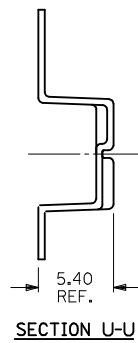
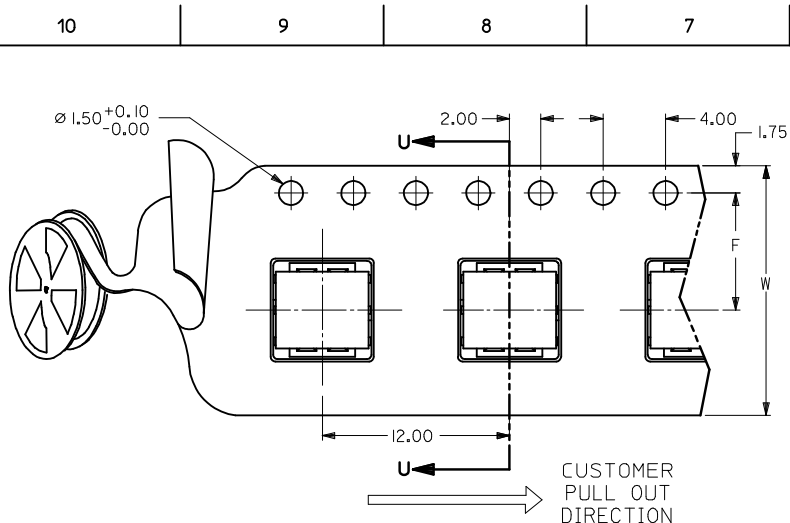
CKT. SIZE	PART NO. FOR PARTS WITHOUT CAP	△ PART NO. FOR PARTS WITH CAP
4	87263-042*	87263-040*
6	87263-062*	87263-060*
8	87263-082*	87263-080*
10	87263-102*	87263-100*
12	87263-122*	87263-120*
14	87263-142*	87263-140*
16	87263-162*	87263-160*
18	87263-182*	87263-180*
20	87263-202*	87263-200*
22	87263-222*	87263-220*
24	87263-242*	87263-240*
26	87263-262*	87263-260*
28	87263-282*	87263-280*
30	87263-302*	87263-300*
32	87263-322*	87263-320*
34	87263-342*	87263-340*
36	87263-362*	87263-360*
38	87263-382*	87263-380*
40	87263-402*	87263-400*
42	87263-422*	87263-420*
44	△ 87263-442*	87263-440*

REV	DESCRIPTION	QUALITY SYMBOLS
J11	SEE SHEET 1 EC NO: S2016-1073 DRAWN: GEMARLY 2015/11/03 CHKD: SCHEONG 2016/06/03 APPR: KHL IM 2016/06/06	$F_A=0$ $F_B=0$ $F_C=0$

GENERAL TOLERANCES (UNLESS SPECIFIED)	
	mm INCH
4 PLACES	± --- ± ---
3 PLACES	± --- ± ---
2 PLACES	± 0.20 ± ---
1 PLACE	± --- ± ---
0 PLACE	± ±
ANGULAR ± 3 °	
DRAFT WHERE APPLICABLE MUST REMAIN WITHIN DIMENSIONS	

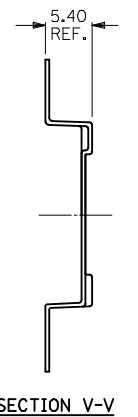
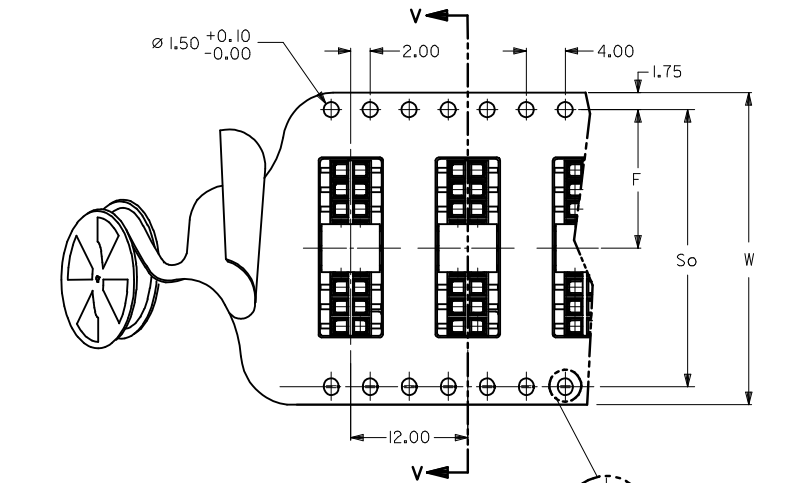
DIMENSION STYLE		SCALE	DESIGN UNITS	THIRD ANGLE PROJECTION
MM ONLY		NTS	METRIC	⊙
DRAWN BY	DATE	TITLE		
JDK	1991/01/11	MGRID, B/ENTRY RECEPT. 2.80MM HT. W/LOC. PEGS W/CAP, SMT		
CHECKED BY	DATE			
MLAI	1991/01/11			
APPROVED BY	DATE	DOCUMENT NO.		
MLONG	2010/03/19	SD-87263-***2*		
MATERIAL NO.		SHEET NO.		
SEE TABLE		2 OF 4		

THIS DRAWING CONTAINS INFORMATION THAT IS PROPRIETARY TO MOLEX INCORPORATED AND SHOULD NOT BE USED WITHOUT WRITTEN PERMISSION	
-------------------------------------------------------------------------------------------------------------------------------	--



PART NO. 87263-***9* (CKTS 04 TO 14)
SINGLE SPROCKET HOLE T/REEL - TYPE A

△ PART NO. FOR PARTS WITHOUT CAP IN T/REEL	△ PART NO. FOR PARTS WITH CAP IN T/REEL	CKT. SIZE	F	So	W	T/REEL TYPE
87263-048*	87263-049*	4	11.5	-	24	A
87263-068*	87263-069*	6	11.5	-	24	
87263-088*	87263-089*	8	11.5	-	24	
87263-108*	87263-109*	10	11.5	-	24	
87263-128*	87263-129*	12	11.5	-	24	
87263-148*	87263-149*	14	11.5	-	24	
87263-168*	87263-169*	16	11.5	-	24	
87263-188*	87263-189*	18	14.2	28.4	32	
87263-208*	87263-209*	20	20.2	40.4	44	
87263-228*	87263-229*	22	20.2	40.4	44	
87263-248*	87263-249*	24	20.2	40.4	44	
87263-268*	87263-269*	26	20.2	40.4	44	
87263-288*	87263-289*	28	20.2	40.4	44	
87263-308*	87263-309*	30	20.2	40.4	44	
87263-328*	87263-329*	32	26.2	52.4	56	
87263-348*	87263-349*	34	-	-	-	
△ 87263-368*	87263-369*	36	26.2	52.4	56	
87263-388*	87263-389*	38	-	-	-	
87263-408*	87263-409*	40	-	-	-	
△ 87263-3686	-	36	26.2	52.4	56	B1



PART NO. 87263-***9* (CKTS 16 TO 40)
DOUBLE SPROCKET HOLE T/REEL - TYPE B

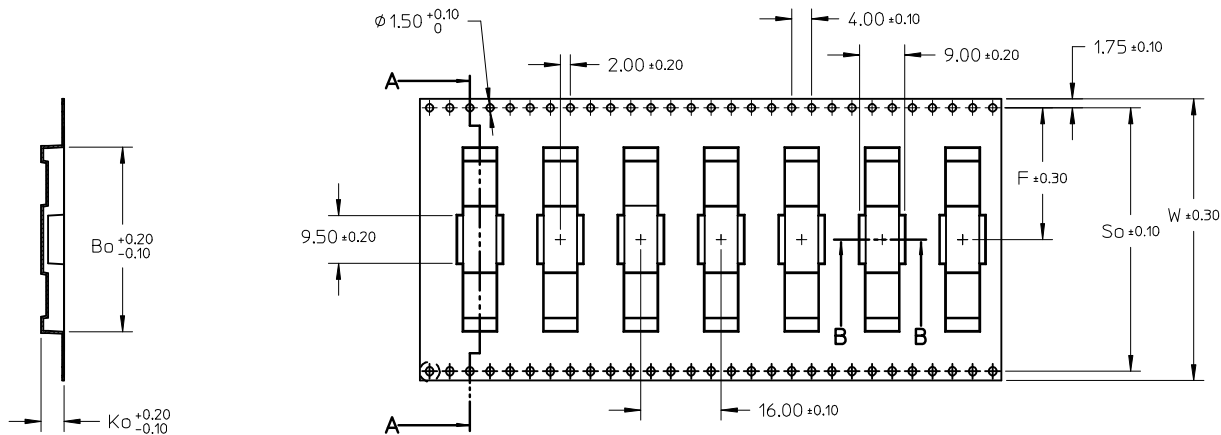
NOTES:

- LEADER AND TRAILER TAPE
- PEELING OFF FORCE OF THE TOP TAPE: 20-80gf.
 (PEELING DIRECTION AS SHOWN IN FOLLOWING FIGURE)
- PACKAGING STANDARD IS AS PER EIA-481.
- TAPE & REEL QUANTITY: EMBOSSED TYPE A & B = 1000PCS/REEL
 EMBOSSED TYPE B1 = 900PCS/REEL
- THE TAPE IS TREATED FOR ANTI-STATIC.

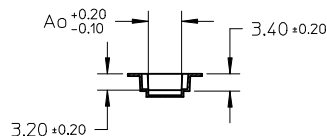
SEE SHEET 1 EC NO: S2016-1073 DRWING: MENARLY 2015/11/03 CHKD: SCHEONG 2016/06/03 APPR: KHLIM 2016/06/06	QUALITY SYMBOLS	GENERAL TOLERANCES (UNLESS SPECIFIED)	DIMENSION STYLE	SCALE	DESIGN UNITS	THIRD ANGLE PROJECTION																		
	$\nabla_A = 0$ $\nabla_C = 0$ $\nabla_P = 0$	<table border="1"> <thead> <tr><th></th><th>mm</th><th>INCH</th></tr> </thead> <tbody> <tr><td>4 PLACES</td><td>± ---</td><td>± ---</td></tr> <tr><td>3 PLACES</td><td>± ---</td><td>± ---</td></tr> <tr><td>2 PLACES</td><td>± 0.20</td><td>± ---</td></tr> <tr><td>1 PLACE</td><td>± ---</td><td>± ---</td></tr> <tr><td>0 PLACE</td><td>±</td><td>±</td></tr> </tbody> </table>		mm	INCH	4 PLACES	± ---	± ---	3 PLACES	± ---	± ---	2 PLACES	± 0.20	± ---	1 PLACE	± ---	± ---	0 PLACE	±	±	MM ONLY	NTS	METRIC	
		mm	INCH																					
	4 PLACES	± ---	± ---																					
3 PLACES	± ---	± ---																						
2 PLACES	± 0.20	± ---																						
1 PLACE	± ---	± ---																						
0 PLACE	±	±																						
DESCRIPTION	ANGULAR ± 3 °	DRAWN BY	DATE	TITLE																				
REV	DRAFT WHERE APPLICABLE MUST REMAIN WITHIN DIMENSIONS	JDK	1991/01/11	MGRID, B/ENTRY RECEPT. 2.80MM HT. W/LOC. PEGS W/CAP, SMT																				
		MLAI	1991/01/11	molex																				
		MLONG	2010/03/19	SD-87263-***2*	SHEET NO. 3 OF 4																			
		MATERIAL NO. SEE TABLE		DOCUMENT NO.																				
		SIZE A3		THIS DRAWING CONTAINS INFORMATION THAT IS PROPRIETARY TO MOLEX INCORPORATED AND SHOULD NOT BE USED WITHOUT WRITTEN PERMISSION																				

T/REEL TYPE B1

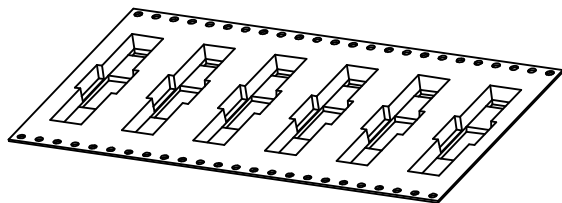
PART WITHOUT CAP IN T&R	CKT SIZE	Bo	Ko	Ao
9 87263-3686	36	36.40	5.00	6.60



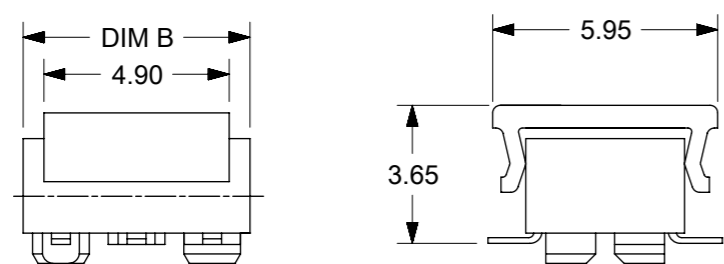
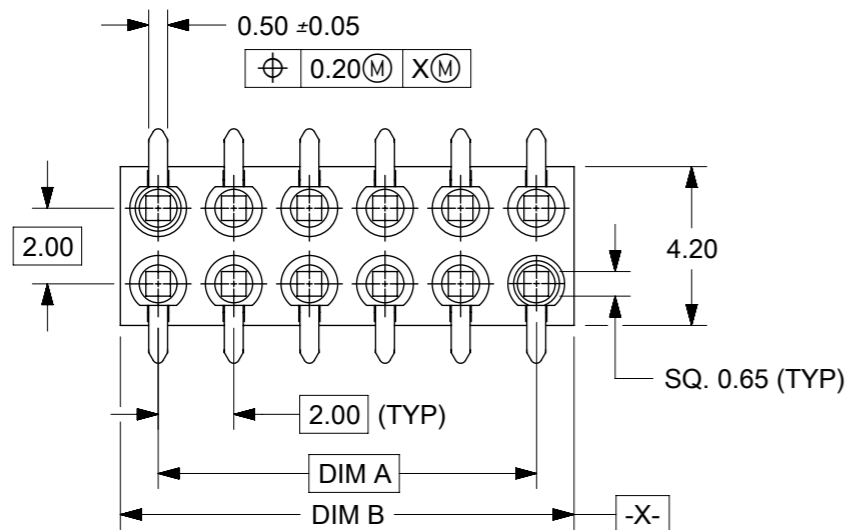
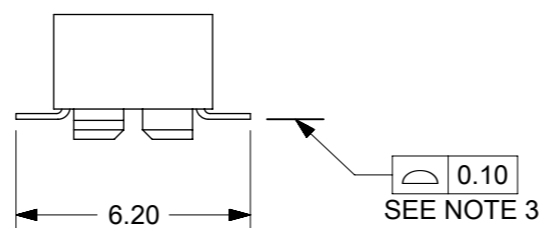
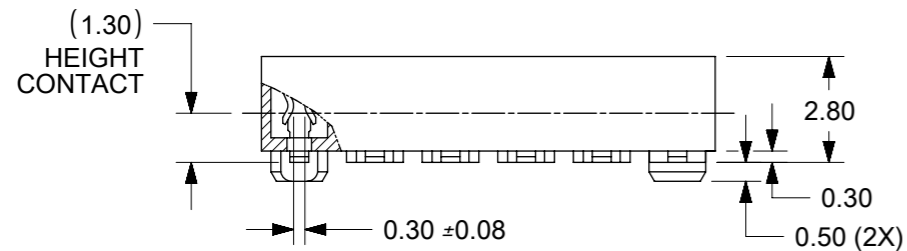
SECTION A-A



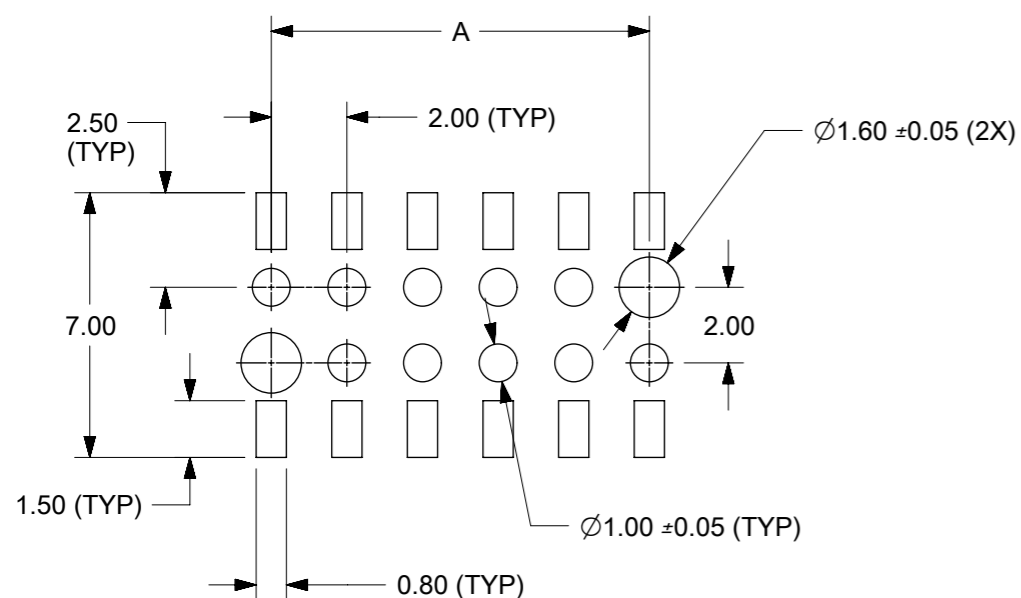
SECTION B-B



SEE SHEET 1 EC NO: SZ016-1073 DRAWING: MEMORLY 2015/11/03 CHKD: SCHEONG 2016/06/03 APPR: KHL IM 2016/06/06	QUALITY SYMBOLS	GENERAL TOLERANCES (UNLESS SPECIFIED)		DIMENSION STYLE MM ONLY		SCALE NTS	DESIGN UNITS METRIC	THIRD ANGLE PROJECTION
	$F_A=0$	4 PLACES	± ---	± ---	DRAWN BY JDK	DATE 1991/01/11	TITLE MGRID, B/ENTRY RECEPT. 2.80MM HT. W/LOC. PEGS W/CAP, SMT	
	$F_G=0$	3 PLACES	± ---	± ---	CHECKED BY MLAI	DATE 1991/01/11	molex DOCUMENT NO. SD-87263-**2* SHEET NO. 4 OF 4	
	$F_P=0$	2 PLACES	± 0.20	± ---	APPROVED BY MLONG	DATE 2010/03/19		
		1 PLACE	± ---	± ---	MATERIAL NO.		SEE TABLE	
		0 PLACE	±	±	DRAFT WHERE APPLICABLE MUST REMAIN WITHIN DIMENSIONS		THIS DRAWING CONTAINS INFORMATION THAT IS PROPRIETARY TO MOLEX INCORPORATED AND SHOULD NOT BE USED WITHOUT WRITTEN PERMISSION	



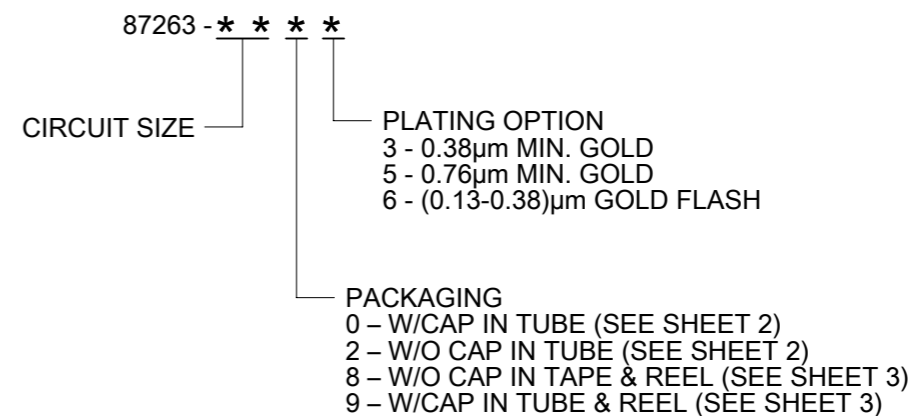
PARTS TO BE PACK WITH CAP (12 CKT SHOWN)



RECOMMENDED SOLDER PAD DESIGN

CKT. SIZE	DIM. A	DIM. B
4	2.00	4.00
6	4.00	6.00
8	6.00	8.00
10	8.00	10.00
12	10.00	12.00
14	12.00	14.00
16	14.00	16.00
18	16.00	18.00
20	18.00	20.00
22	20.00	22.00
24	22.00	24.00
26	24.00	26.00
28	26.00	28.00
30	28.00	30.00
32	30.00	32.00
34	32.00	34.00
36	34.00	36.00
38	36.00	38.00
40	38.00	40.00
42	40.00	42.00
44	42.00	44.00

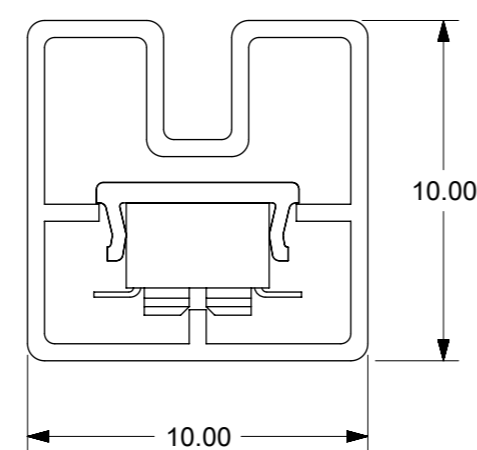
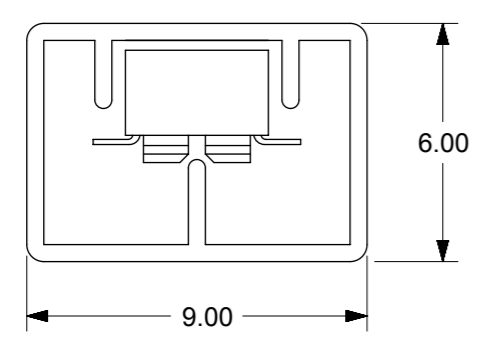
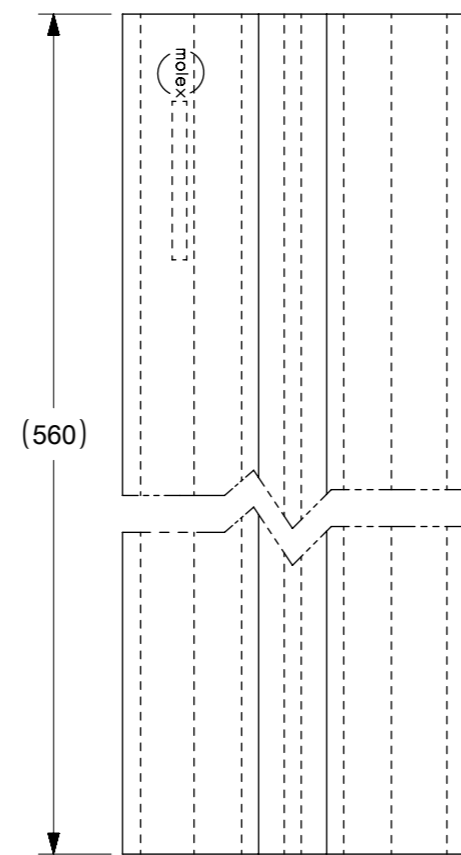
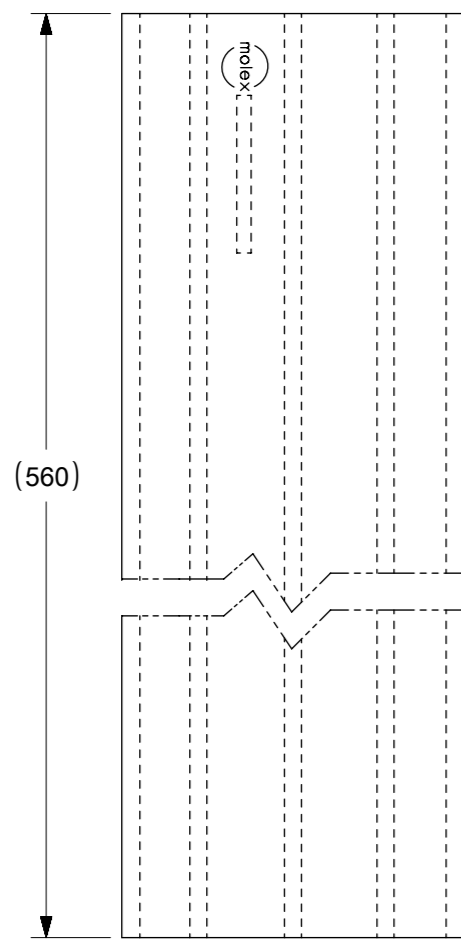
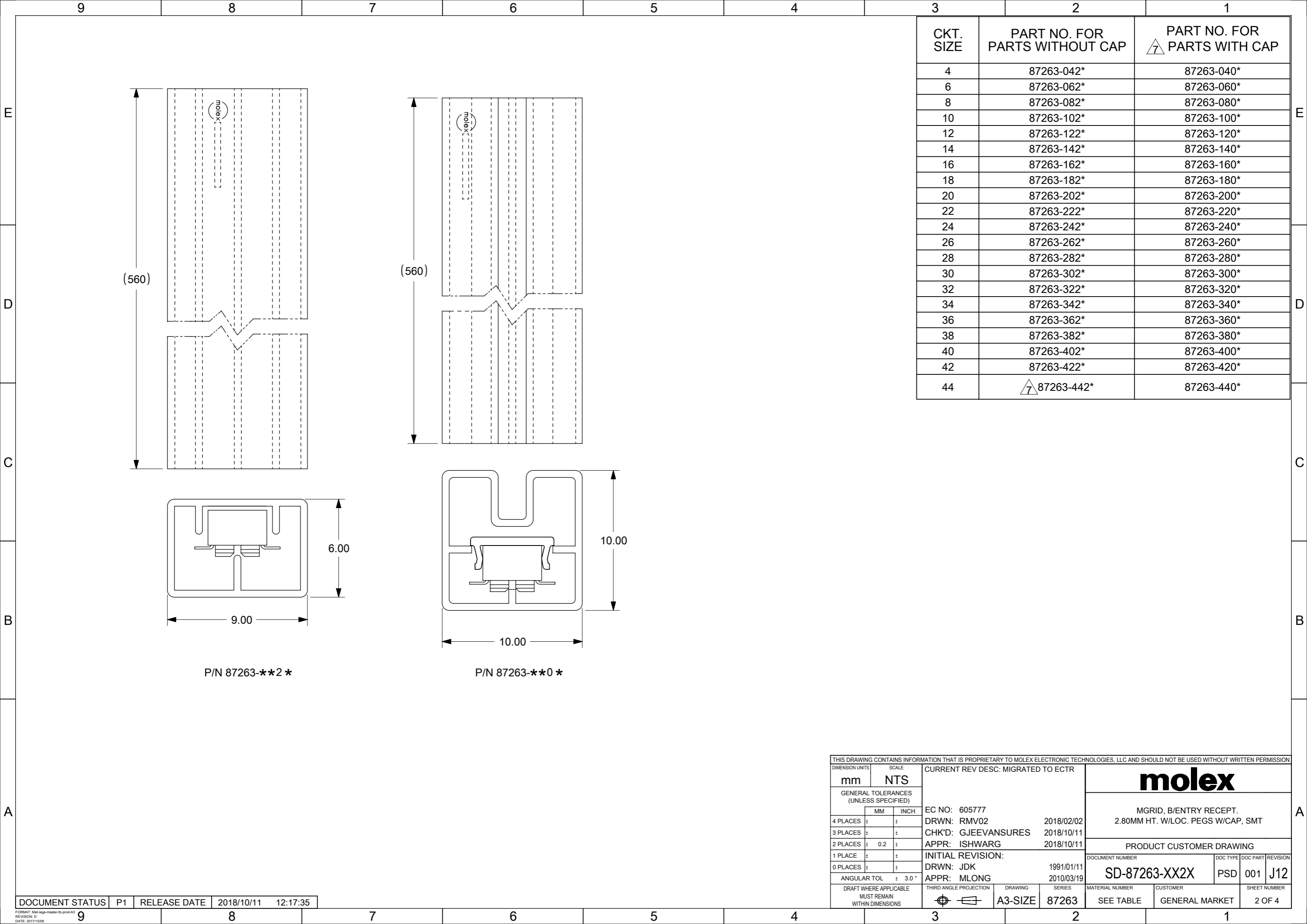
PART NO. LEGEND



NOTES:

- FOR ILLUSTRATION PURPOSES, DRAWINGS SHOWS PART WITH 12 CIRCUIT SIZE
- PLATING:
POST PLATING - SELECTIVE GOLD (SEE LEGEND) AT CONTACT AREA, AND 1.27µm MIN. SELECTIVE TIN AT SOLDER AREA BOTH OVER 1.27µm MIN. NICKEL OVERALL
- CO-PLANARITY OF P.C TAIL TO BE MEASURED BY RESTING THE PART ON A FLAT GAGE SURFACE.
- PRODUCT SPECIFICATION PS-87263 APPLIES
- CAP: HIGH TEMPERATURE THERMOPLASTIC, UL RATED 94V-0, SUITABLE FOR SURFACE-MOUNT SOLDERING PROCESS.
COLOR: BLACK
- POSITION OF CAP TO BE CENTRAL WITH RESPECT TO DIMENSION "A"
- CONTACT FACTORY FOR DETAIL ON THIS PART NO.
- PARTS SHALL BE PACKED IN MOISTURE BARRIER BAG
- P/N 87263-3686 TO BE PACKED IN EMBOSSED TAPE TYPE B1
- PACKAGING SPECIFICATION FOR TAPE AND REEL: PK-87263-300

THIS DRAWING CONTAINS INFORMATION THAT IS PROPRIETARY TO MOLEX ELECTRONIC TECHNOLOGIES, LLC AND SHOULD NOT BE USED WITHOUT WRITTEN PERMISSION		CURRENT REV DESC: MIGRATED TO ECTR		molex	
DIMENSION UNITS: mm		SCALE: NTS			
GENERAL TOLERANCES (UNLESS SPECIFIED)		EC NO: 605777		MGRID, B/ENTRY RECEIPT.	
4 PLACES ±		DRWN: RMV02 2018/02/02		2.80MM HT. W/LOC. PEGS W/CAP, SMT	
3 PLACES ±		CHK'D: GJEEVANSURES 2018/10/11		PRODUCT CUSTOMER DRAWING	
2 PLACES ± 0.2		APPR: ISHWARG 2018/10/11		DOCUMENT NUMBER	
1 PLACE ±		INITIAL REVISION:		SD-87263-XX2X	
0 PLACES ±		DRWN: JDK 1991/01/11		DOC TYPE	
ANGULAR TOL ± 3.0°		APPR: MLONG 2010/03/19		PSD	
DRAFT WHERE APPLICABLE MUST REMAIN WITHIN DIMENSIONS		THIRD ANGLE PROJECTION		DOC PART	
		DRAWING: A3-SIZE		001	
		SERIES: 87263		REVISION: J12	
		MATERIAL NUMBER: SEE TABLE		SHEET NUMBER: 1 OF 4	
		CUSTOMER: GENERAL MARKET			



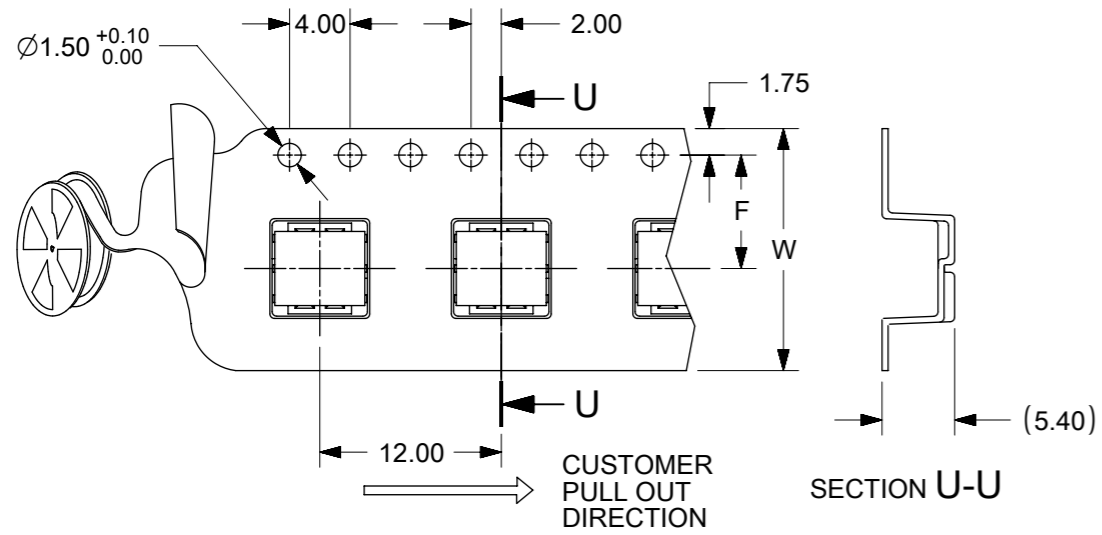
P/N 87263-**-2*

P/N 87263-**-0*

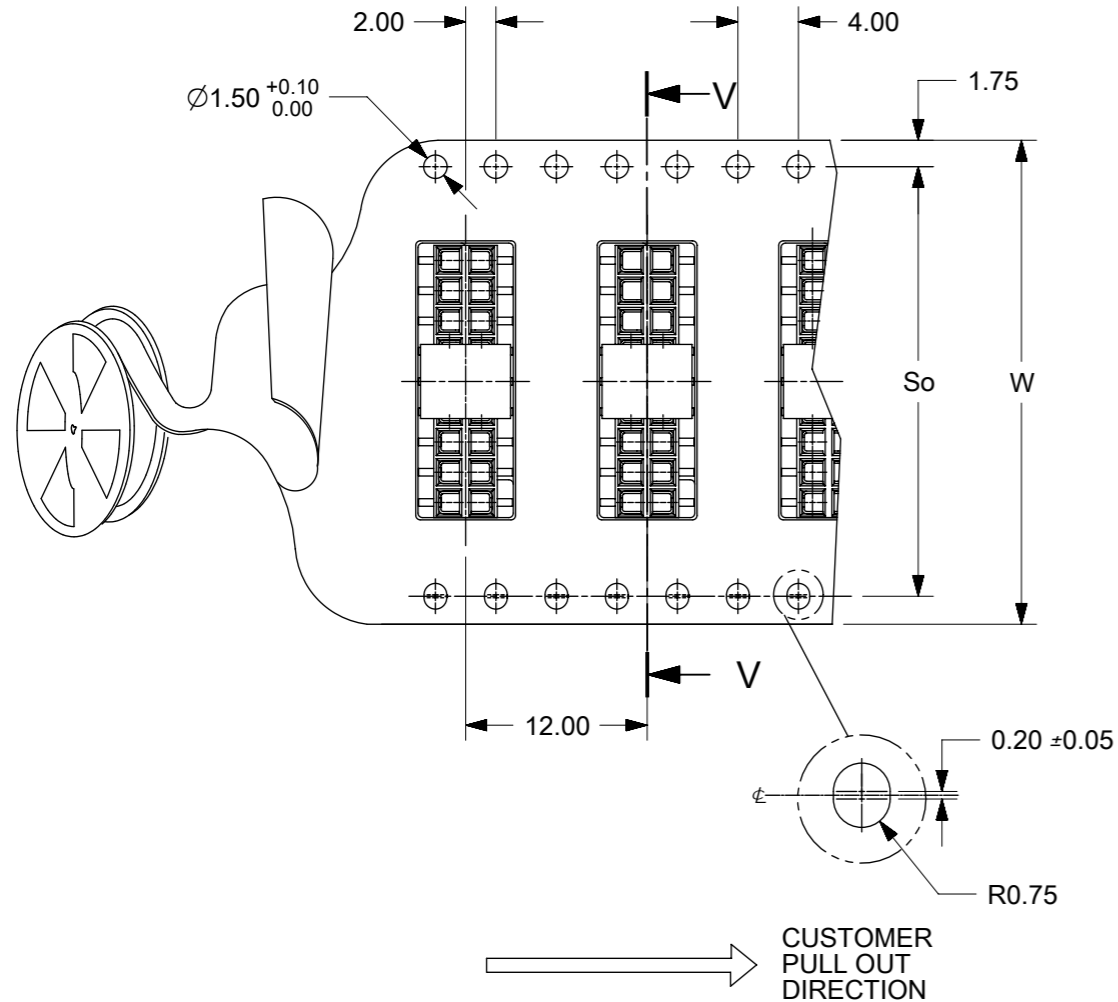
CKT. SIZE	PART NO. FOR PARTS WITHOUT CAP	PART NO. FOR PARTS WITH CAP
4	87263-042*	87263-040*
6	87263-062*	87263-060*
8	87263-082*	87263-080*
10	87263-102*	87263-100*
12	87263-122*	87263-120*
14	87263-142*	87263-140*
16	87263-162*	87263-160*
18	87263-182*	87263-180*
20	87263-202*	87263-200*
22	87263-222*	87263-220*
24	87263-242*	87263-240*
26	87263-262*	87263-260*
28	87263-282*	87263-280*
30	87263-302*	87263-300*
32	87263-322*	87263-320*
34	87263-342*	87263-340*
36	87263-362*	87263-360*
38	87263-382*	87263-380*
40	87263-402*	87263-400*
42	87263-422*	87263-420*
44	△ 87263-442*	87263-440*

THIS DRAWING CONTAINS INFORMATION THAT IS PROPRIETARY TO MOLEX ELECTRONIC TECHNOLOGIES, LLC AND SHOULD NOT BE USED WITHOUT WRITTEN PERMISSION

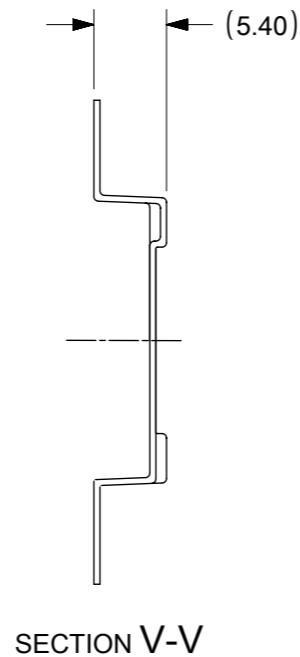
DIMENSION UNITS		SCALE		CURRENT REV DESC: MIGRATED TO ECTR											
mm		NTS													
GENERAL TOLERANCES (UNLESS SPECIFIED)								EC NO: 605777 DRWN: RMV02 2018/02/02 CHK'D: GJEEVANSURES 2018/10/11 APPR: ISHWARG 2018/10/11							
		MM	INCH												
4 PLACES	±		±					PRODUCT CUSTOMER DRAWING MGRID, B/ENTRY RECEPT. 2.80MM HT. W/LOC. PEGS W/CAP, SMT							
3 PLACES	±		±												
2 PLACES	±	0.2	±					DOCUMENT NUMBER: SD-87263-XX2X DOC TYPE: PSD DOC PART: 001 REVISION: J12							
1 PLACE	±		±												
0 PLACES	±		±												
ANGULAR TOL		± 3.0°													
DRAFT WHERE APPLICABLE MUST REMAIN WITHIN DIMENSIONS				THIRD ANGLE PROJECTION		DRAWING		SERIES		MATERIAL NUMBER		CUSTOMER		SHEET NUMBER	
						A3-SIZE		87263		SEE TABLE		GENERAL MARKET		2 OF 4	



PART NO. 87263-**9* (CKTS 04 TO 16)
SINGLE SPROCKET HOLE T/REEL - TYPE A

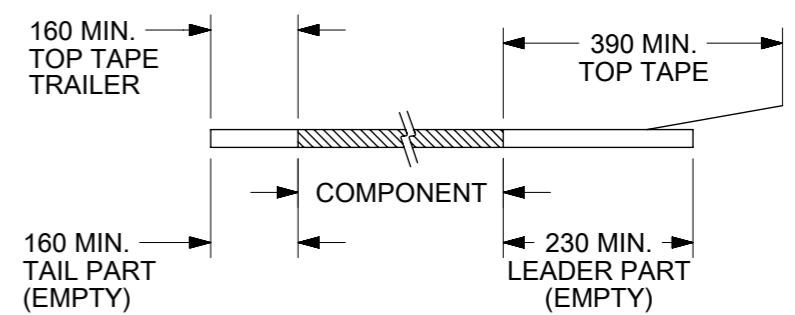


PART NO. 87263-**9* (CKTS 18 TO 40)
DOUBLE SPROCKET HOLE T/REEL - TYPE B

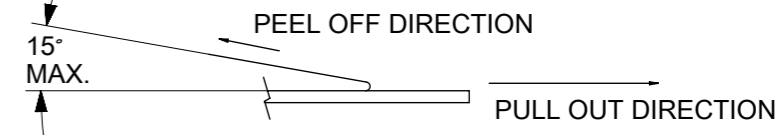


PART NO. FOR PARTS WITHOUT CAP IN T/REEL	PART NO. FOR PARTS WITH CAP IN T/REEL	CKT. SIZE	F	So	W	T/REEL TYPE	
87263-048*	87263-049*	4	11.5	----	24	A	
87263-068*	87263-069*	6	11.5	----	24		
87263-088*	87263-089*	8	11.5	----	24		
87263-108*	87263-109*	10	11.5	----	24		
87263-128*	87263-129*	12	11.5	----	24		
87263-148*	87263-149*	14	11.5	----	24		
87263-168*	87263-169*	16	11.5	----	24		
87263-188*	87263-189*	18	14.2	28.4	32		B
87263-208*	87263-209*	20	20.2	40.4	44		
87263-228*	87263-229*	22	20.2	40.4	44		
87263-248*	87263-249*	24	20.2	40.4	44		
87263-268*	87263-269*	26	20.2	40.4	44		
87263-288*	87263-289*	28	20.2	40.4	44		
87263-308*	87263-309*	30	20.2	40.4	44		
87263-328*	87263-329*	32	26.2	52.4	56		
87263-348*	87263-349*	34	----	----	----		
△ ₉ 87263-368*	87263-369*	36	26.2	52.4	56		
87263-388*	87263-389*	38	----	----	----		
87263-408*	87263-409*	40	----	----	----		
△ ₉ 87263-3686	----	36	26.2	52.4	56	B1	

NOTES:
1. LEADER AND TRAILER TAPE



2. PEELING OFF FORCE OF THE TOP TAPE: 20-80gf.
(PEELING DIRECTION AS SHOWN IN FOLLOWING FIGURE)



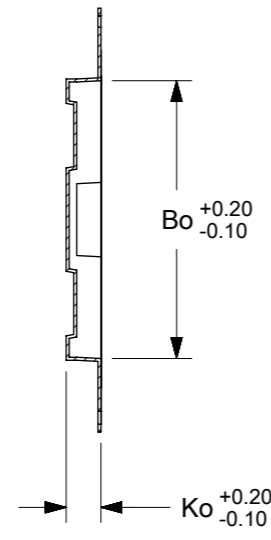
3. PACKAGING STANDARD IS AS PER EIA-481.
4. TAPE & REEL QUANTITY: EMBOSSED TYPE A & B = 1000PCS/REEL
EMBOSSED TYPE B1 = 900PCS/REEL
5. THE TAPE IS TREATED FOR ANTI-STATIC.

THIS DRAWING CONTAINS INFORMATION THAT IS PROPRIETARY TO MOLEX ELECTRONIC TECHNOLOGIES, LLC AND SHOULD NOT BE USED WITHOUT WRITTEN PERMISSION

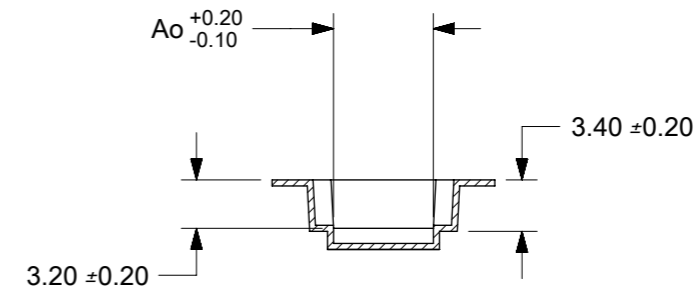
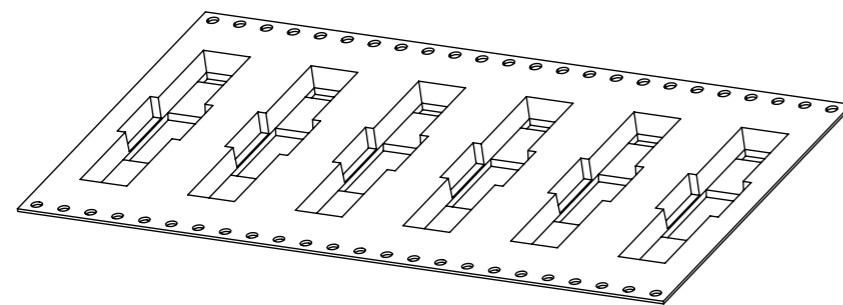
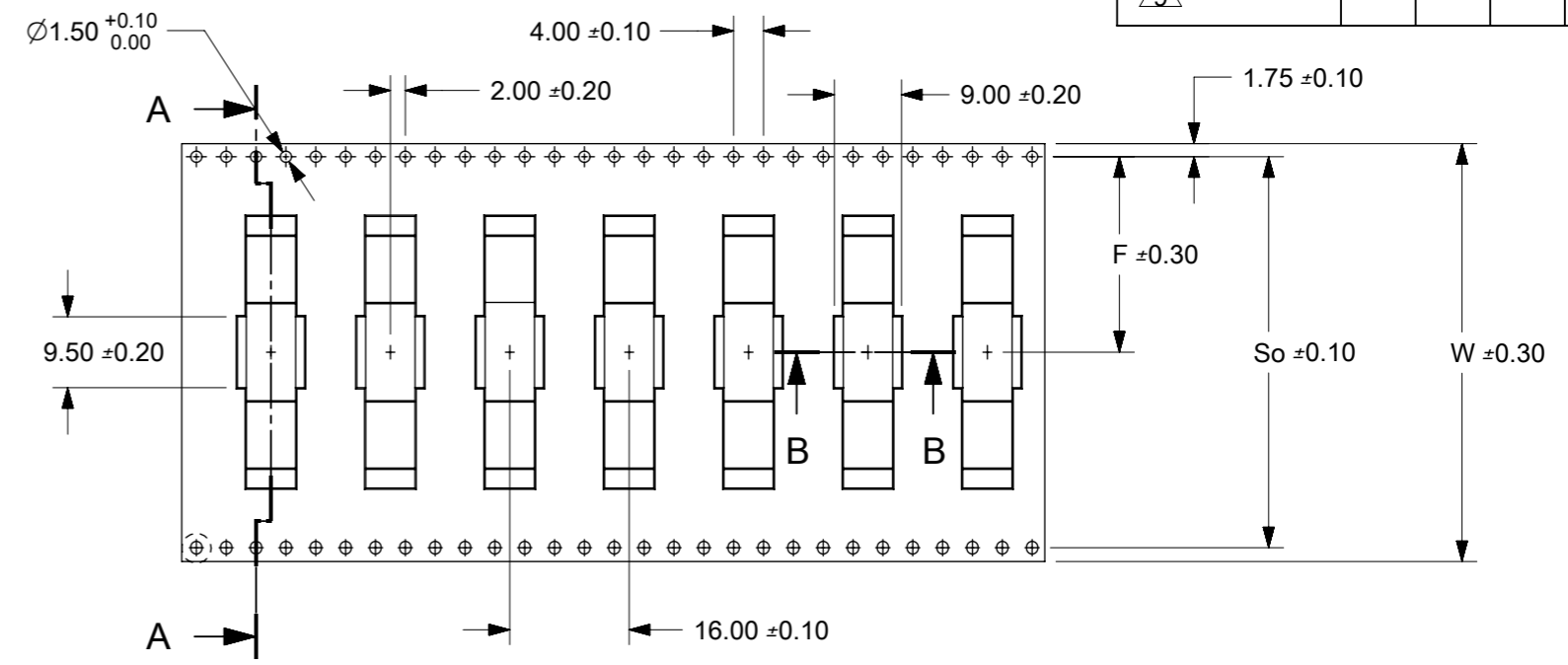
DIMENSION UNITS	SCALE	CURRENT REV DESC: MIGRATED TO ECTR		molex		
mm	NTS					
GENERAL TOLERANCES (UNLESS SPECIFIED)		EC NO: 605777		MGRID, B/ENTRY RECEIPT. 2.80MM HT. W/LOC. PEGS W/CAP, SMT		
4 PLACES	±	DRWN: RMV02	2018/02/02	PRODUCT CUSTOMER DRAWING		
3 PLACES	±	CHK'D: GJEEVANSURES	2018/10/11	DOCUMENT NUMBER		
2 PLACES	± 0.2	APPR: ISHWARG	2018/10/11	SD-87263-XX2X		
1 PLACE	±	INITIAL REVISION:		DOC TYPE	DOC PART	REVISION
0 PLACES	±	DRWN: JDK	1991/01/11	PSD	001	J12
ANGULAR TOL	± 3.0°	APPR: MLONG	2010/03/19	SHEET NUMBER		
DRAFT WHERE APPLICABLE MUST REMAIN WITHIN DIMENSIONS		THIRD ANGLE PROJECTION	DRAWING	SERIES	MATERIAL NUMBER	CUSTOMER
			A3-SIZE	87263	SEE TABLE	GENERAL MARKET

T/REEL TYPE B1

PART WITHOUT CAP IN T&R	CKT SIZE	Bo	Ko	Ao
87263-3686	36	36.40	5.00	6.60



SECTION A-A



SECTION B-B

THIS DRAWING CONTAINS INFORMATION THAT IS PROPRIETARY TO MOLEX ELECTRONIC TECHNOLOGIES, LLC AND SHOULD NOT BE USED WITHOUT WRITTEN PERMISSION									
DIMENSION UNITS		SCALE		CURRENT REV DESC: MIGRATED TO ECTR					
mm		NTS		<div style="text-align: center; font-size: 24pt; font-weight: bold;">molex</div> <p>MGRID, B/ENTRY RECEIPT. 2.80MM HT. W/LOC. PEGS W/CAP, SMT</p> <p>PRODUCT CUSTOMER DRAWING</p>					
GENERAL TOLERANCES (UNLESS SPECIFIED)									
	MM	INCH							
4 PLACES	±								
3 PLACES	±								
2 PLACES	±	0.2	±						
1 PLACE	±								
0 PLACES	±								
ANGULAR TOL ± 3.0°				EC NO: 605777		DRWN: RMV02		2018/02/02	
DRAFT WHERE APPLICABLE MUST REMAIN WITHIN DIMENSIONS				THIRD ANGLE PROJECTION		DRAWING		SERIES	
				A3-SIZE		87263		1991/01/11	
						MATERIAL NUMBER		CUSTOMER	
						SEE TABLE		GENERAL MARKET	
						DOCUMENT NUMBER		DOC TYPE	
						SD-87263-XX2X		PSD	
						DOC PART		REVISION	
						001		J12	
						SHEET NUMBER		4 OF 4	

DOCUMENT STATUS	P1	RELEASE DATE	2018/10/11	12:17:35
-----------------	----	--------------	------------	----------