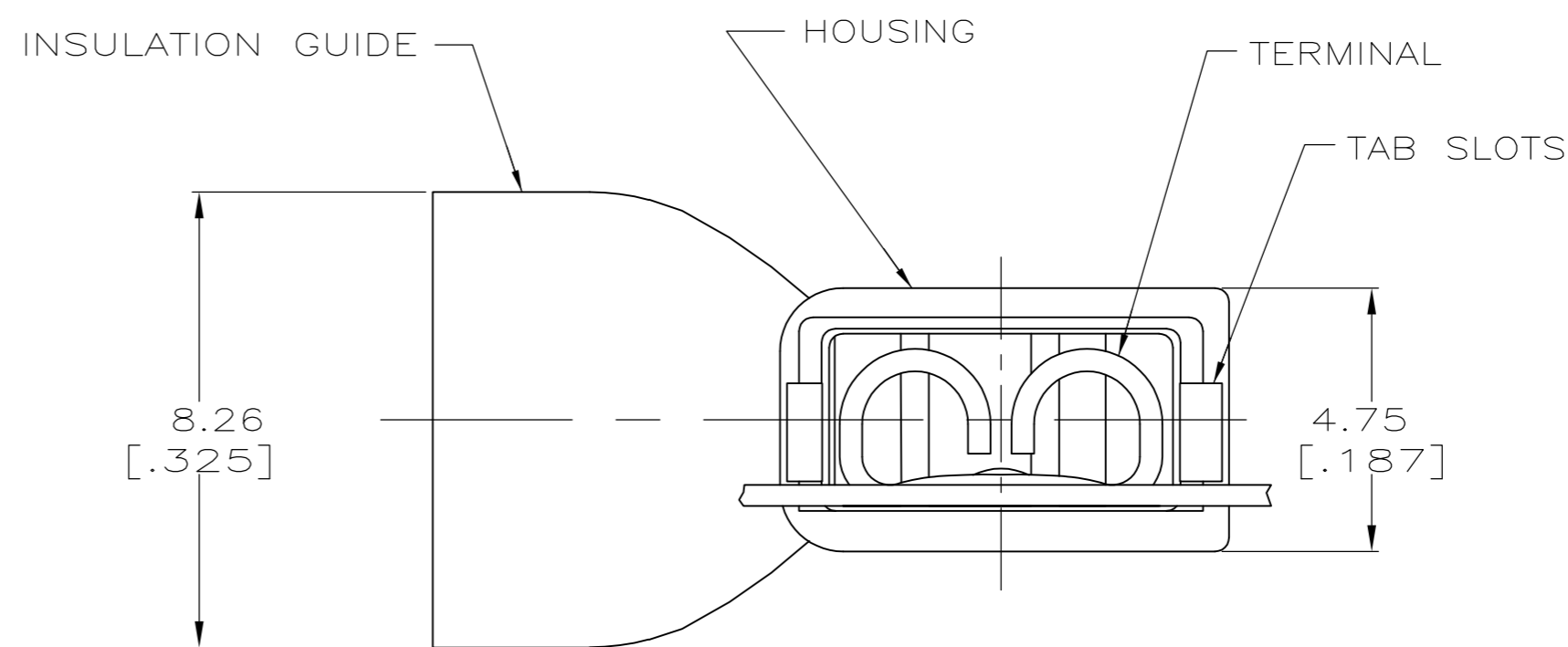
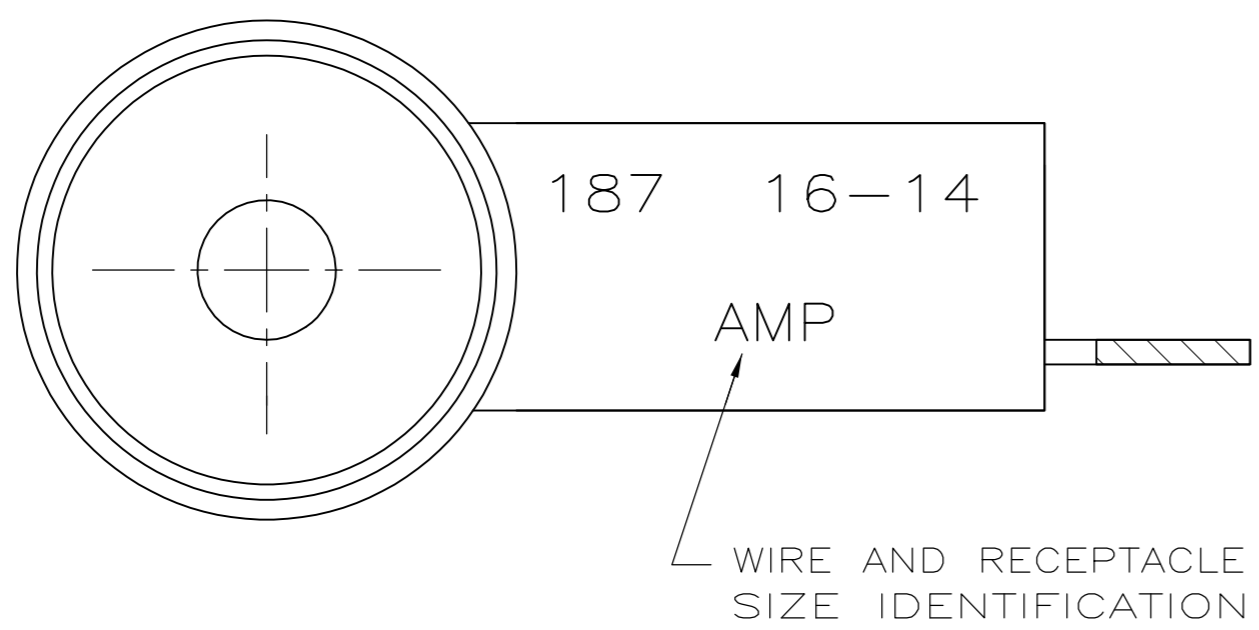
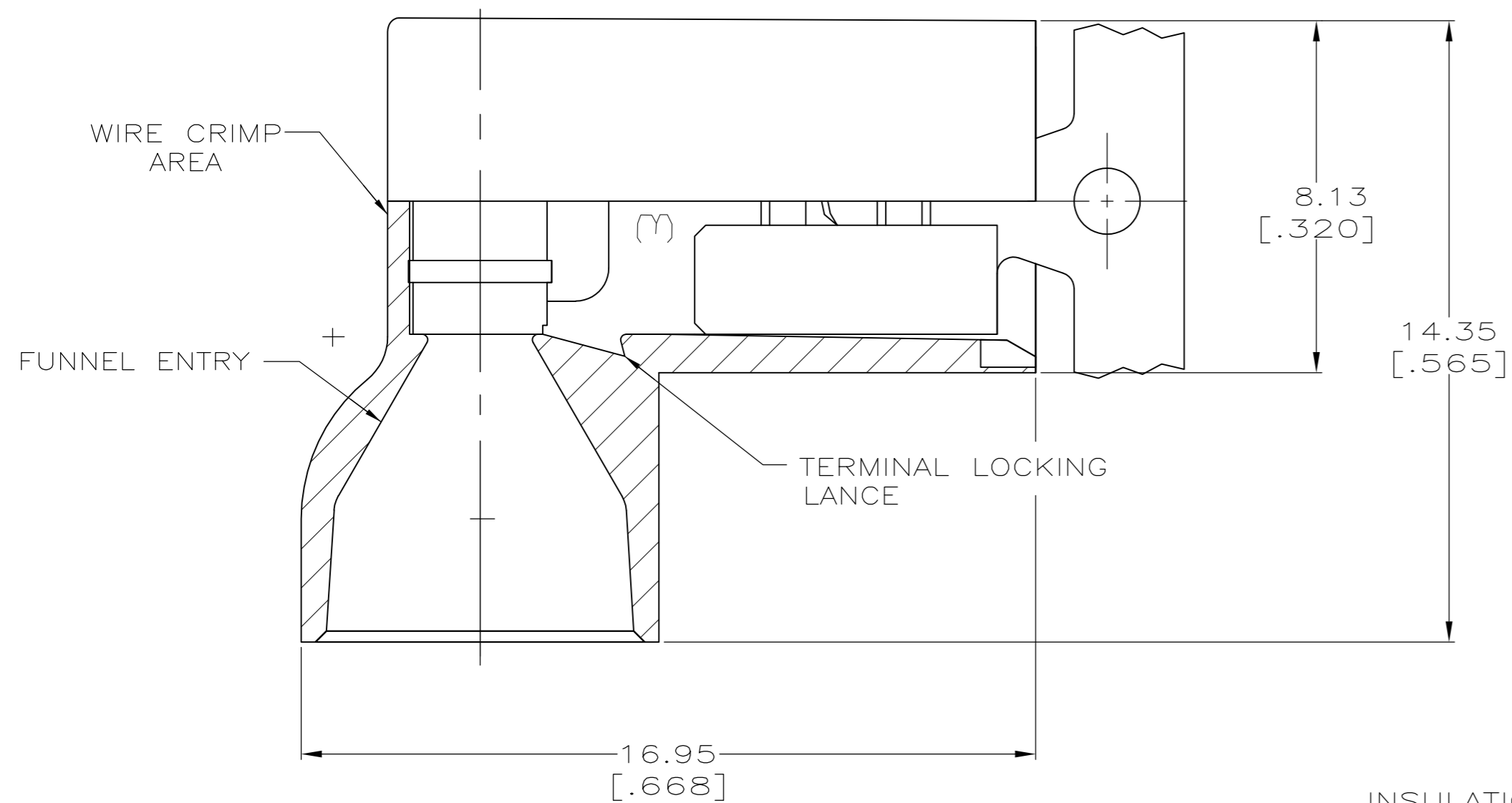


THIS DRAWING IS UNPUBLISHED. RELEASED FOR PUBLICATION
 © COPYRIGHT - By - ALL RIGHTS RESERVED.

LOC	DIST	REVISIONS					
AF	50	P	LTR	DESCRIPTION	DATE	DWN	APVD
		E		REVISED PER ECR-13-004343	30JUL13	KH	KR

- 1 FITS 0.81±0.025 X 4.75 [.032±.001 X .187] TAB
- 2 WIRE SIZE: 1.3-2.0mm² [16-14 AWG], STRANDED ONLY.
 ONE WIRE STRIP LENGTH 7.94 [.312]
 TWO WIRE STRIP LENGTH 8.51 [.335]
- 3 INSULATION SIZE: 6.60 [.260] MAX DIA.
- 4 CONTINUOUS STRIP.
- △ PRELIMINARY - NOT FOR PRODUCTION



TYPE 6/6 NYLON	BLACK	BRASS	TIN PLATE	△ 9-521247-2
TYPE 6/6 NYLON	BLUE TRANSLUCENT	BRASS	TIN PLATE	3-521247-2
MATERIAL	COLOR	MATERIAL	FINISH	PART NUMBER
HOUSING			TERMINAL	

THIS DRAWING IS A CONTROLLED DOCUMENT.		DWN	JR RUTH	16DEC99	 TE Connectivity RECEPTACLE, ASSEMBLY, FLAG, ULTRA-FAST, .187 SERIES			
DIMENSIONS: mm [INCHES]		CHK	MS FEHER	16DEC99				
TOLERANCES UNLESS OTHERWISE SPECIFIED:		APVD	J HUMMEL	16DEC99				
0 PLC ± - 1 PLC ± - 2 PLC ± 0.25 [.010] 3 PLC ± - 4 PLC ± - ANGLES ± -		PRODUCT SPEC	108-2043	NAME				
MATERIAL	SEE TABLE	FINISH	SEE TABLE	114-2123	SIZE	CAGE CODE	DRAWING NO	RESTRICTED TO
		CUSTOMER DRAWING		WEIGHT	A2	00779	C=521247	-
				SCALE	8:1	SHEET	1 of 1	REV
								E