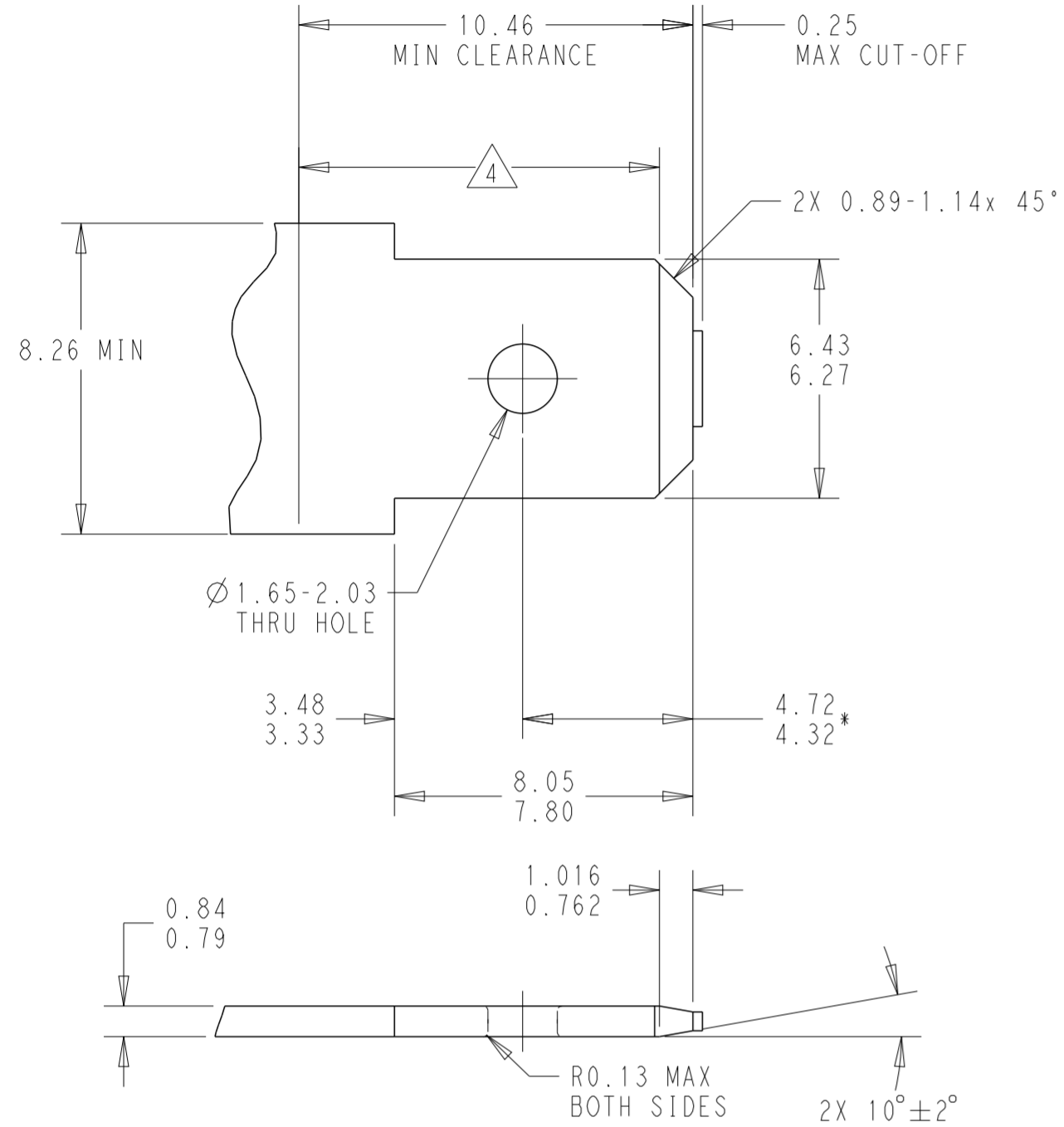
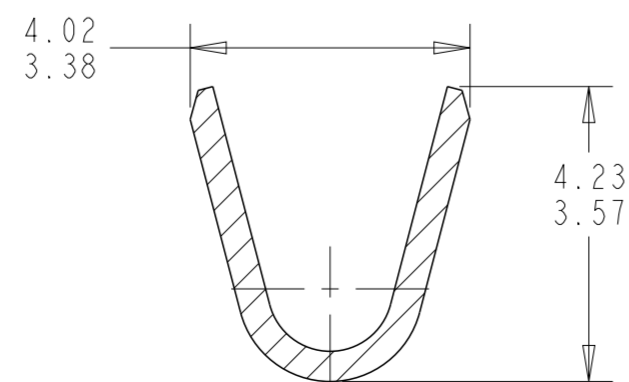


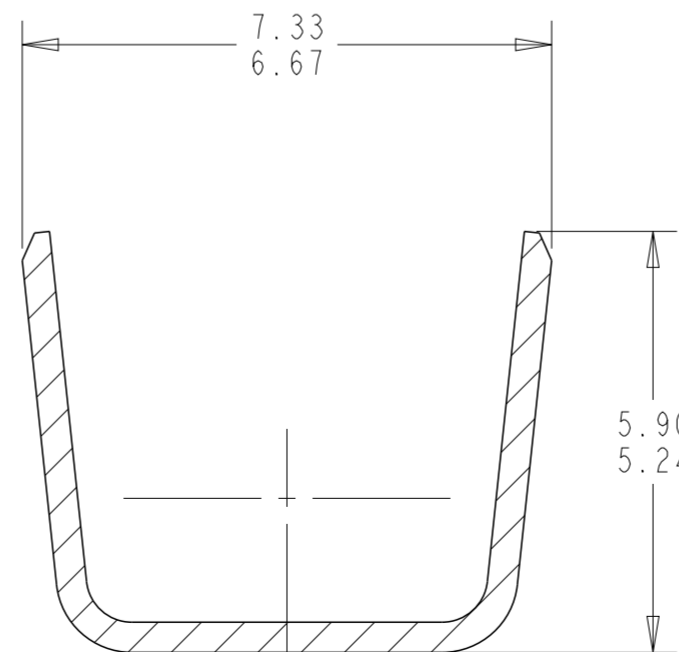
SUGGESTED MATING TAB



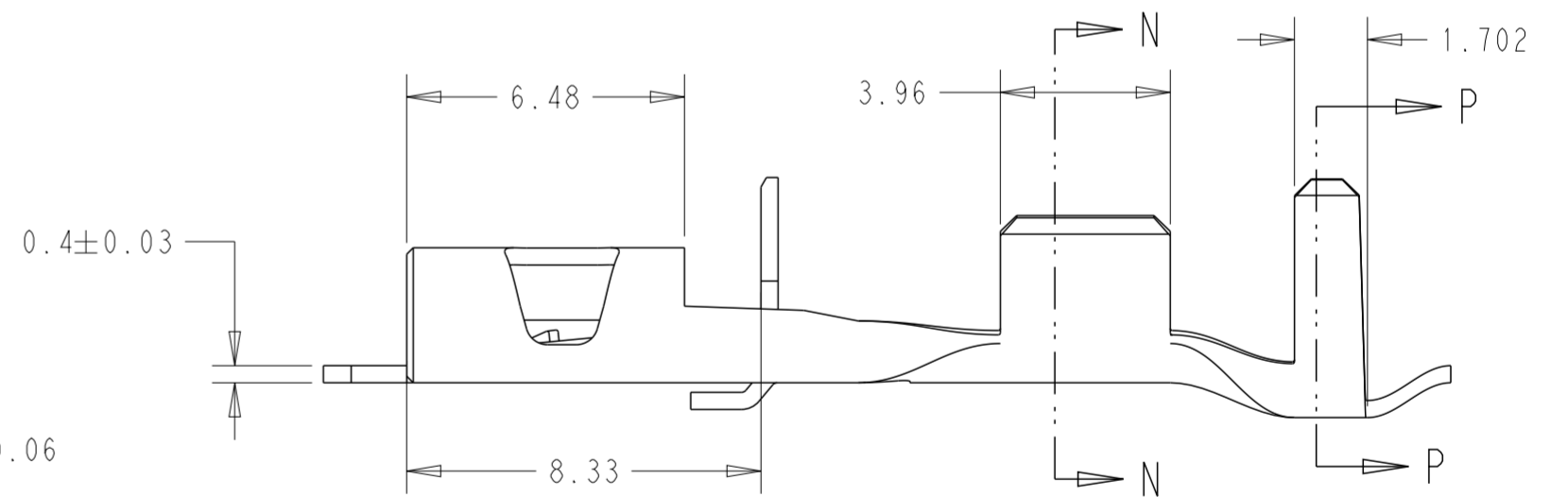
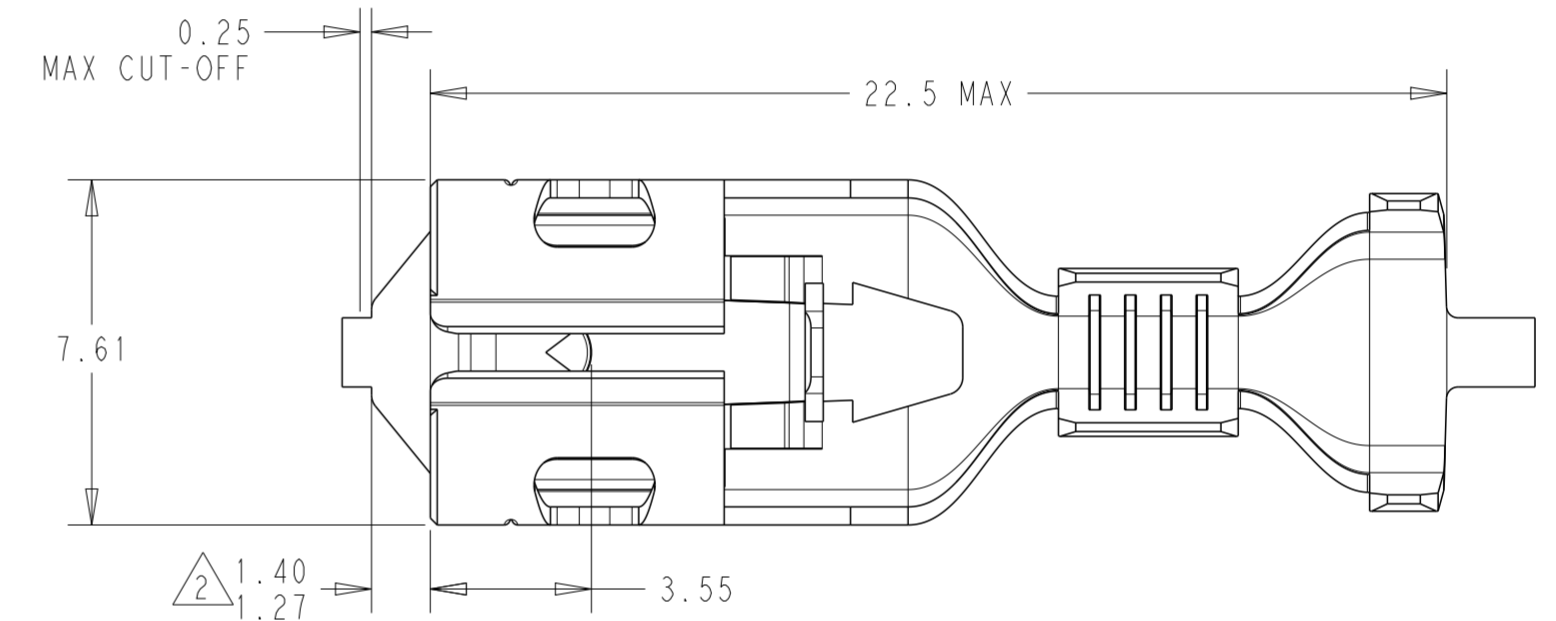
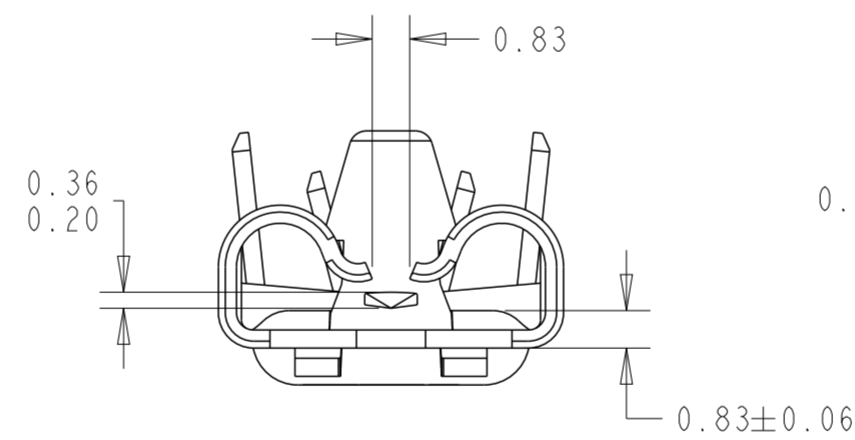
1. MATERIAL: 1/2 HARD BRASS OR NICKEL PLATED STEEL
 2. NO BURRS PERMISSIBLE AROUND HOLE
 3. TIN PLATING IS REQUIRED ON BRASS WHEN TERMINAL TEMPERATURE IS OVER 225°F
 4. MUST BE FLAT WITHIN 0.08 OVER THIS LENGTH
 5. HOLE MUST BE SYMMETRICAL ABOUT TAB ϕ WITHIN 0.08.
- * TO BE USED ONLY WHEN SHOULDER IS ELIMINATED.



SECTION N-N
SCALE 10:1



SECTION P-P
SCALE 10:1



REVISIONS					
P	LTR	DESCRIPTION	DATE	DWN	APVD
3		PLATING CHANGED TO UNPLATED	02SEP2020	BKW	KR
A		REVISED PER ECN-21-111483	04AUG2021	PC	KR
A1		REVISED PER ECN-22-173509	07SEP2022	TDB	KR
B		REVISED PER ECN-23-193388	12JAN2023	TDB	KR

1. CONTINUOUS STRIP ON REELS, BREAKS MAY BE PRESENT
2. THIS DIMENSION MUST BE MAINTAINED FOR PROPER FUNCTION OF THE LATCHING MECHANISM.
3. WIRE RANGE:
 (2) 18 AWG STRANDED / (2) 2.80 INSULATION DIAMETER DOUBLE WIRE
 (1) 20 AWG + (1) 18 AWG STRANDED / (1) 2.56 + (1) 2.80 INSULATION DIAMETER DOUBLE WIRE
 (1) 18 AWG + (1) 16 AWG STRANDED / (1) 2.80 + (1) 3.11 INSULATION DIAMETER DOUBLE WIRE
4. THIS TERMINAL MUST BE USED WITH A TIN PLATED TAB

UNPLATED 4	BRASS	2238278-1
FINISH	MATERIAL	PART NUMBER

THIS DRAWING IS A CONTROLLED DOCUMENT.		DWN B. WEAVER 05 JUN 2020	TE Connectivity	
DIMENSIONS: mm		CHK K. RANDOLPH 05 JUN 2020	NAME RECEPTACLE, POSITIVE-LOCK 250 SERIES	
TOLERANCES UNLESS OTHERWISE SPECIFIED: 0 PLC ± 1 PLC ± 2 PLC ±0.25 3 PLC ± 4 PLC ± ANGLES ± FINISH		APVD W. MOYER 05 JUN 2020	PRODUCT SPEC -	
MATERIAL SEE TABLE		APPLICATION SPEC 114-2074	SIZE A2	CAGE CODE 00779
SEE TABLE		WEIGHT -	DRAWING NO C-2238278	RESTRICTED TO -
CUSTOMER DRAWING			SCALE 6:1	SHEET 1 OF 1
			REV B	