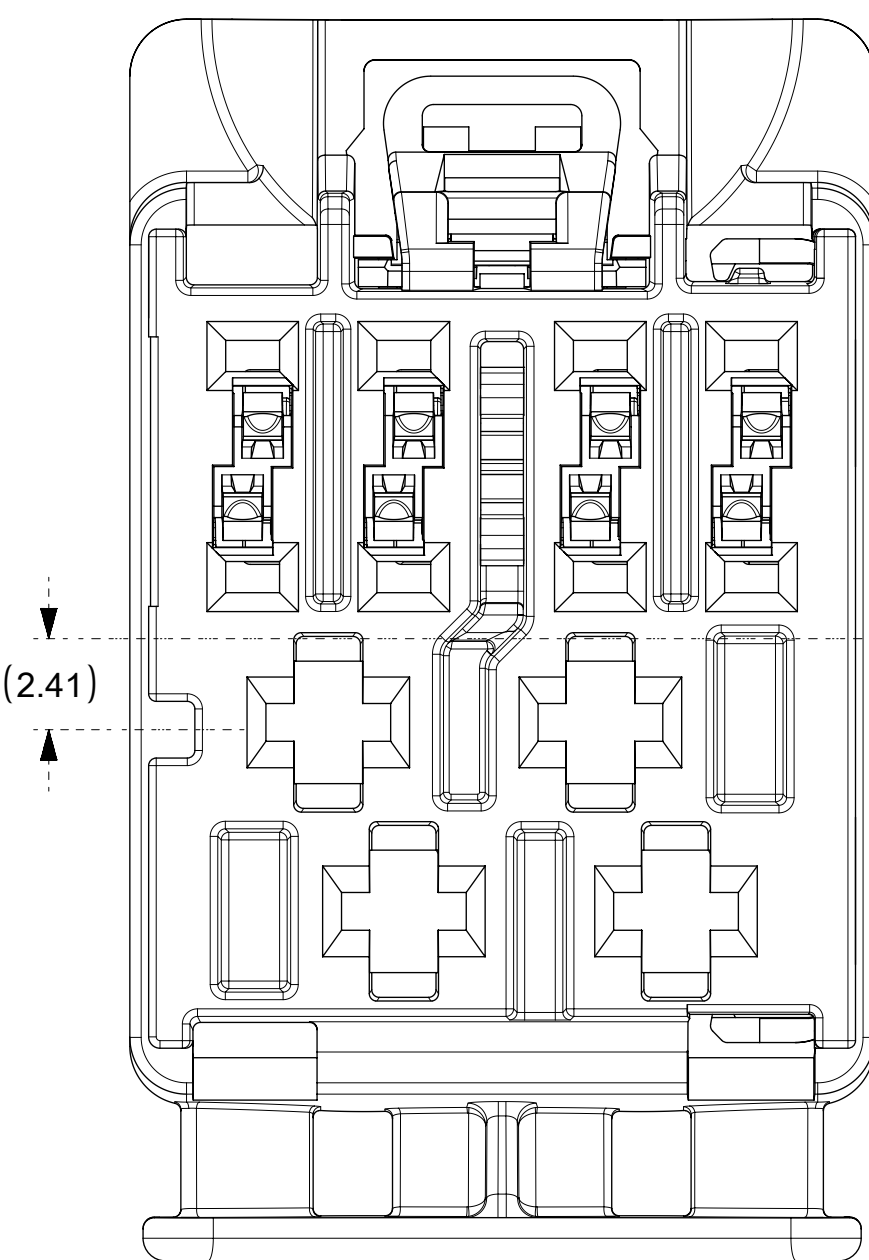
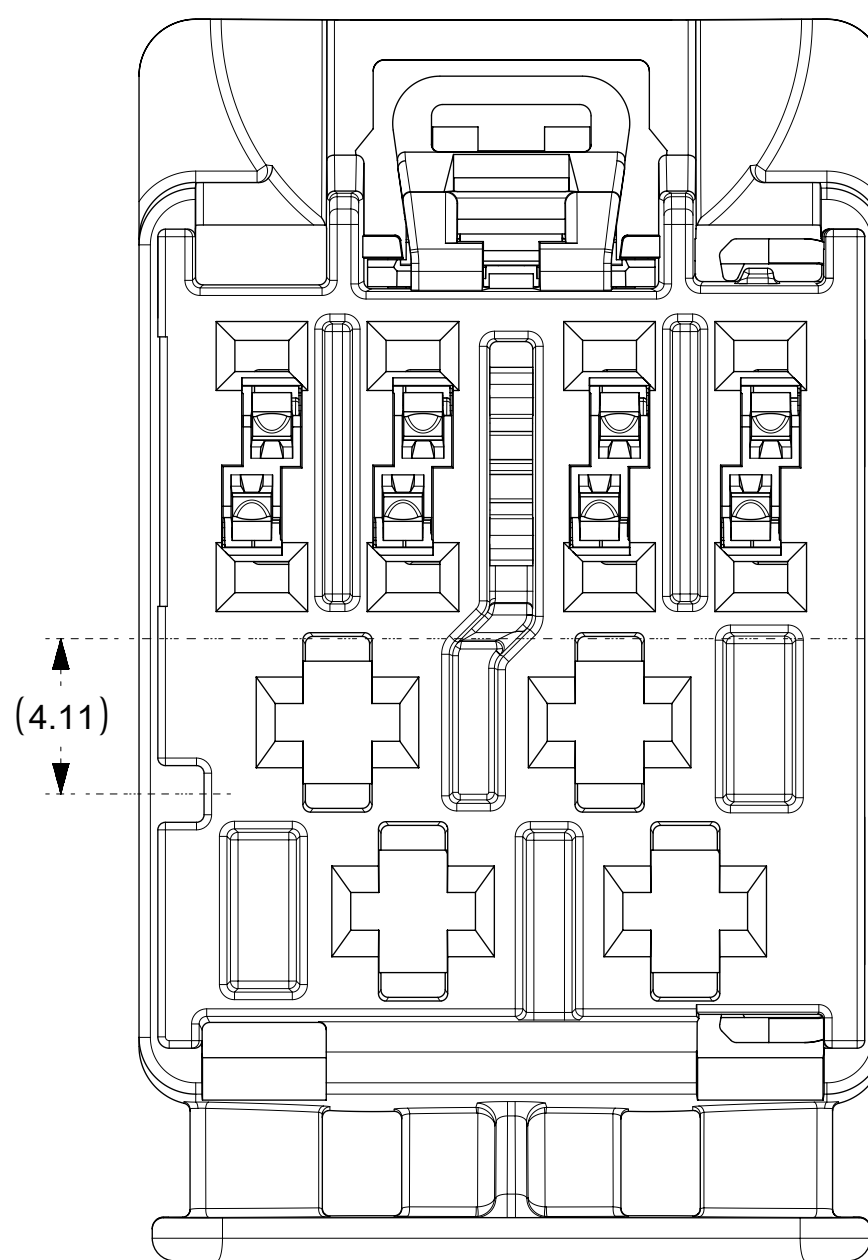


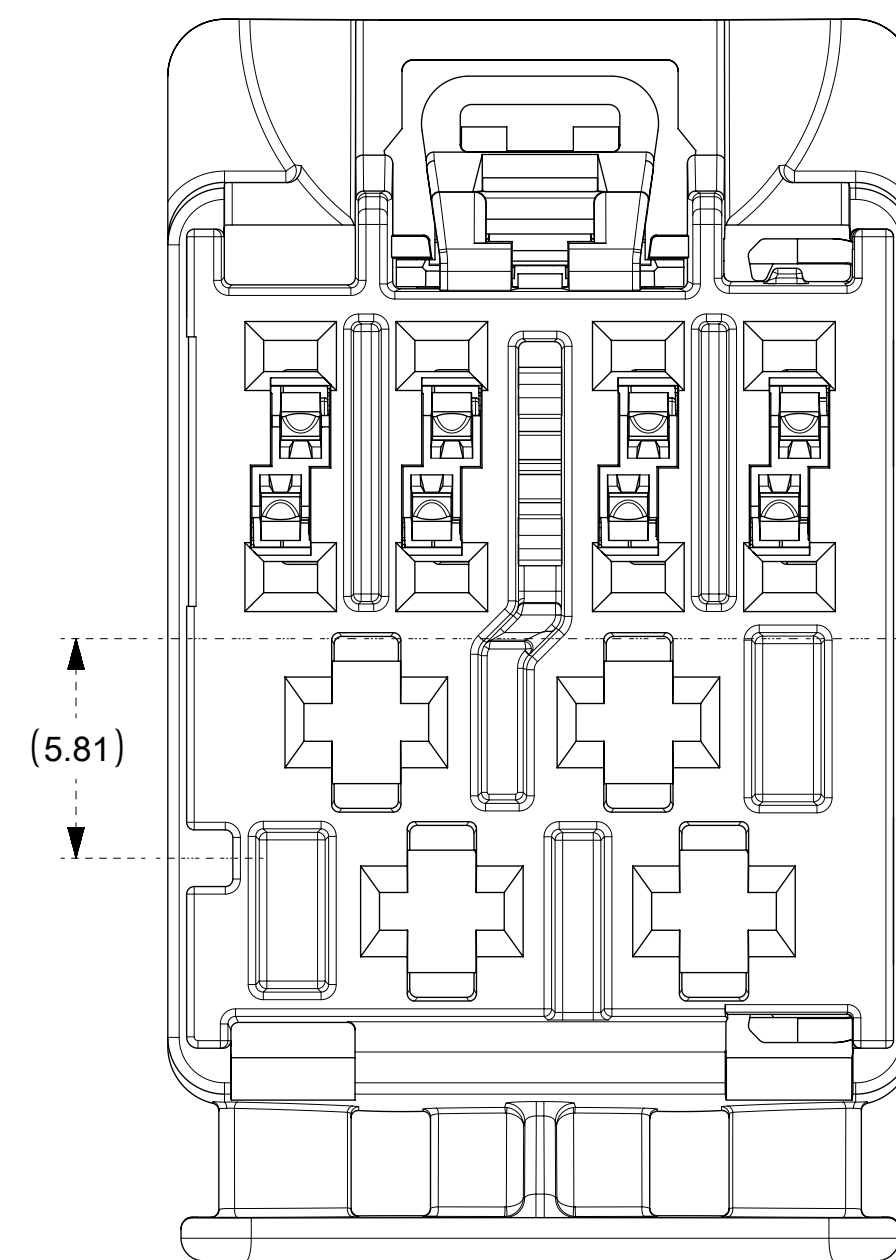
12WAY CONNECTOR ASSEMBLY
KEY 1
P/N 1600260001



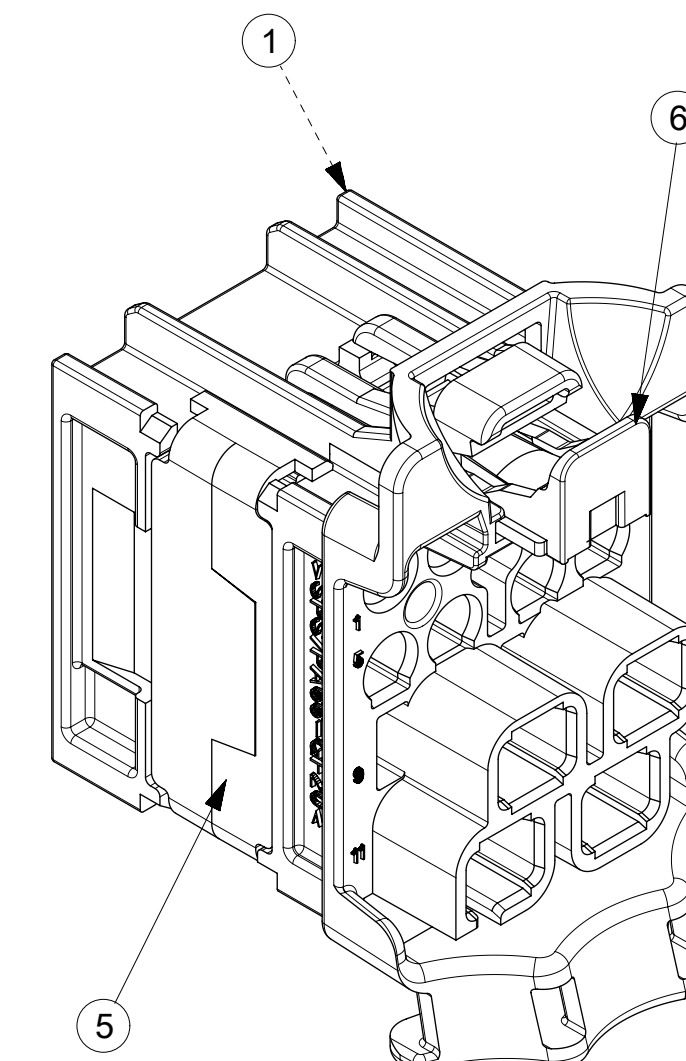
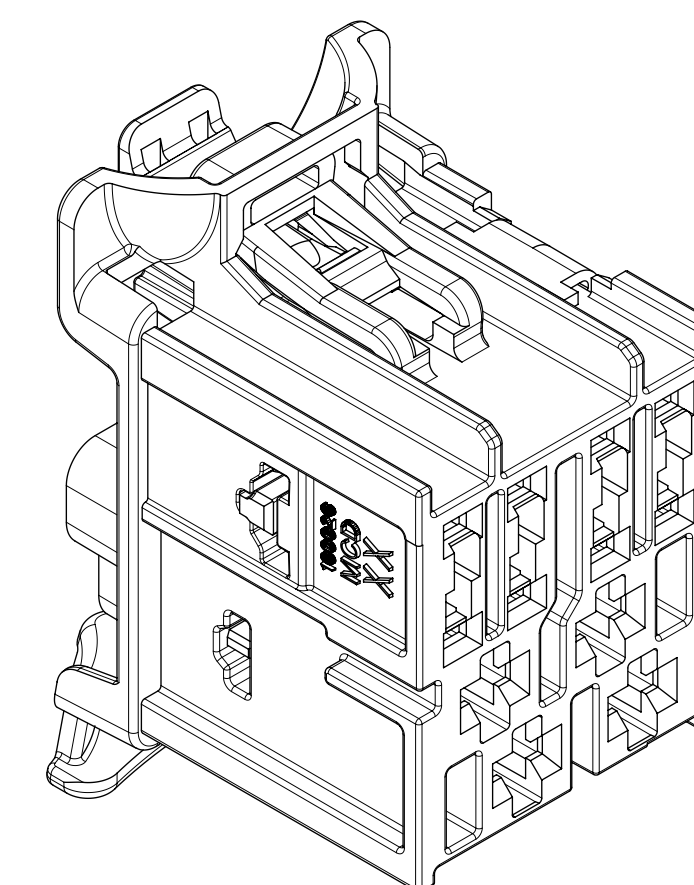
12WAY CONNECTOR ASSEMBLY
KEY 2
P/N 1600260002



12WAY CONNECTOR ASSEMBLY
KEY 3
P/N 1600260003



12WAY CONNECTOR ASSEMBLY
KEY 4
P/N 1600260004



ITEM	DESCRIPTION	COLOR	RECYCLING CODE	WEIGHT (GRAMS)	NO OF ITEMS REQUIRED			
1	CONN HOUSING - KEY 1	BLACK	SPS/PA66-GF20	5.0	1			
2	CONN HOUSING - KEY 2	LT GREEN B	SPS/PA66-GF20	5.0		1		
3	CONN HOUSING - KEY 3	LT PURPLE	SPS/PA66-GF20	5.0			1	
4	CONN HOUSING - KEY 4	LT GRAY	SPS/PA66-GF20	5.0				1
5	ISL	NATURAL	SPS-GF30	0.37	1	1	1	1
6	CPA	NATURAL	PA66-GF50	0.08	1	1	1	1

MOLEX ASSEMBLY PART NO.'S	KEY
1600260001	KEY 1
1600260002	KEY 2
1600260003	KEY 3
1600260004	KEY 4

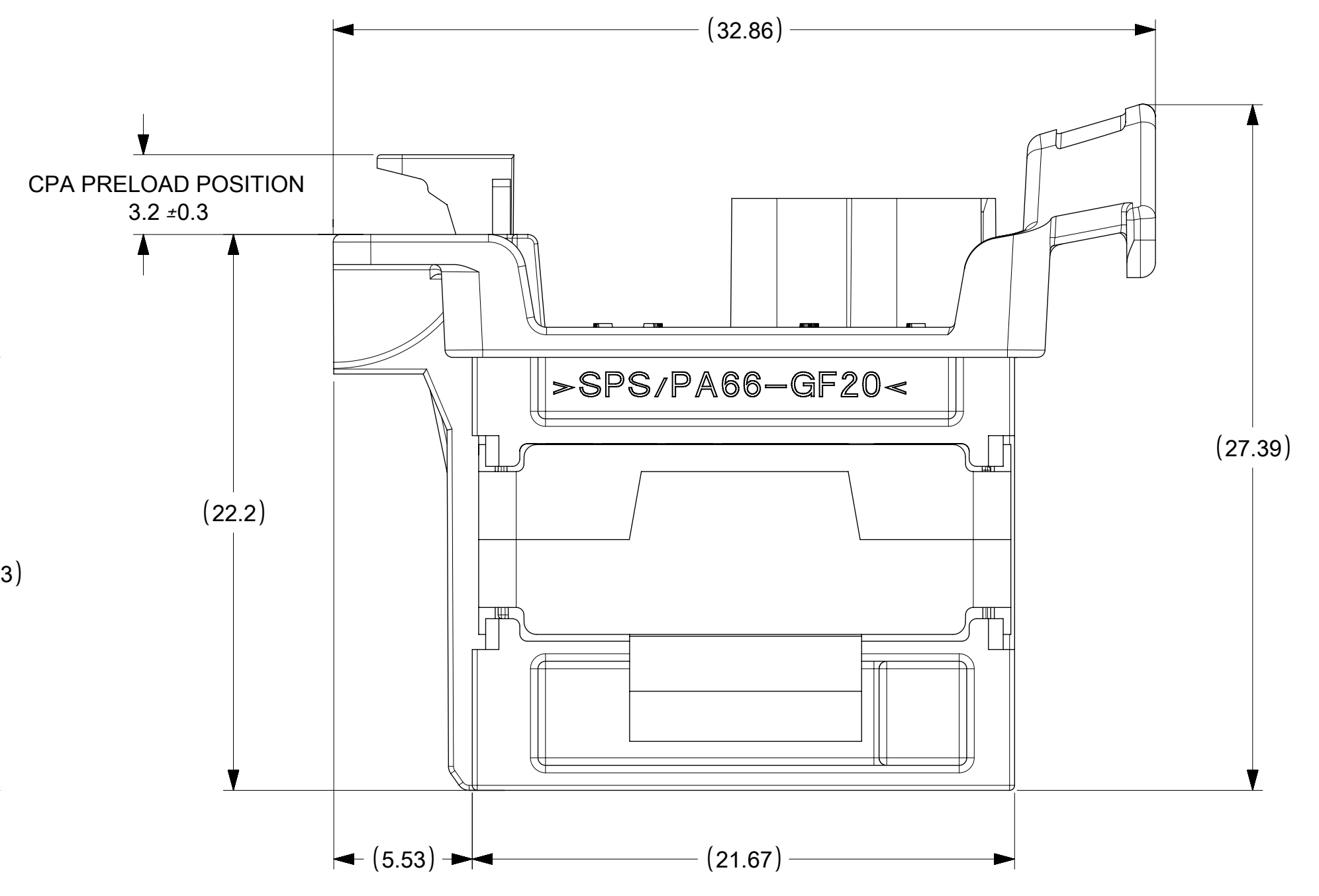
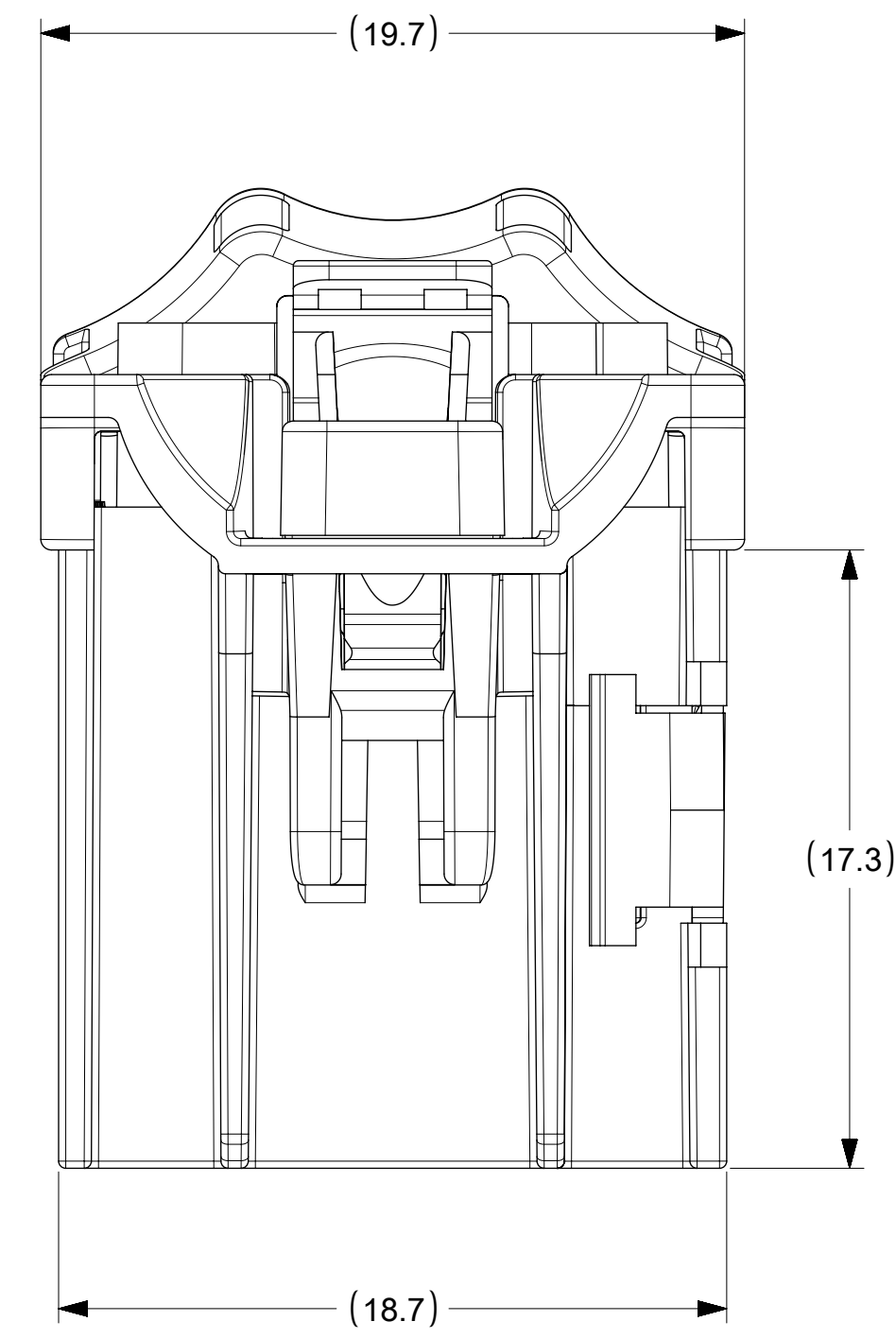
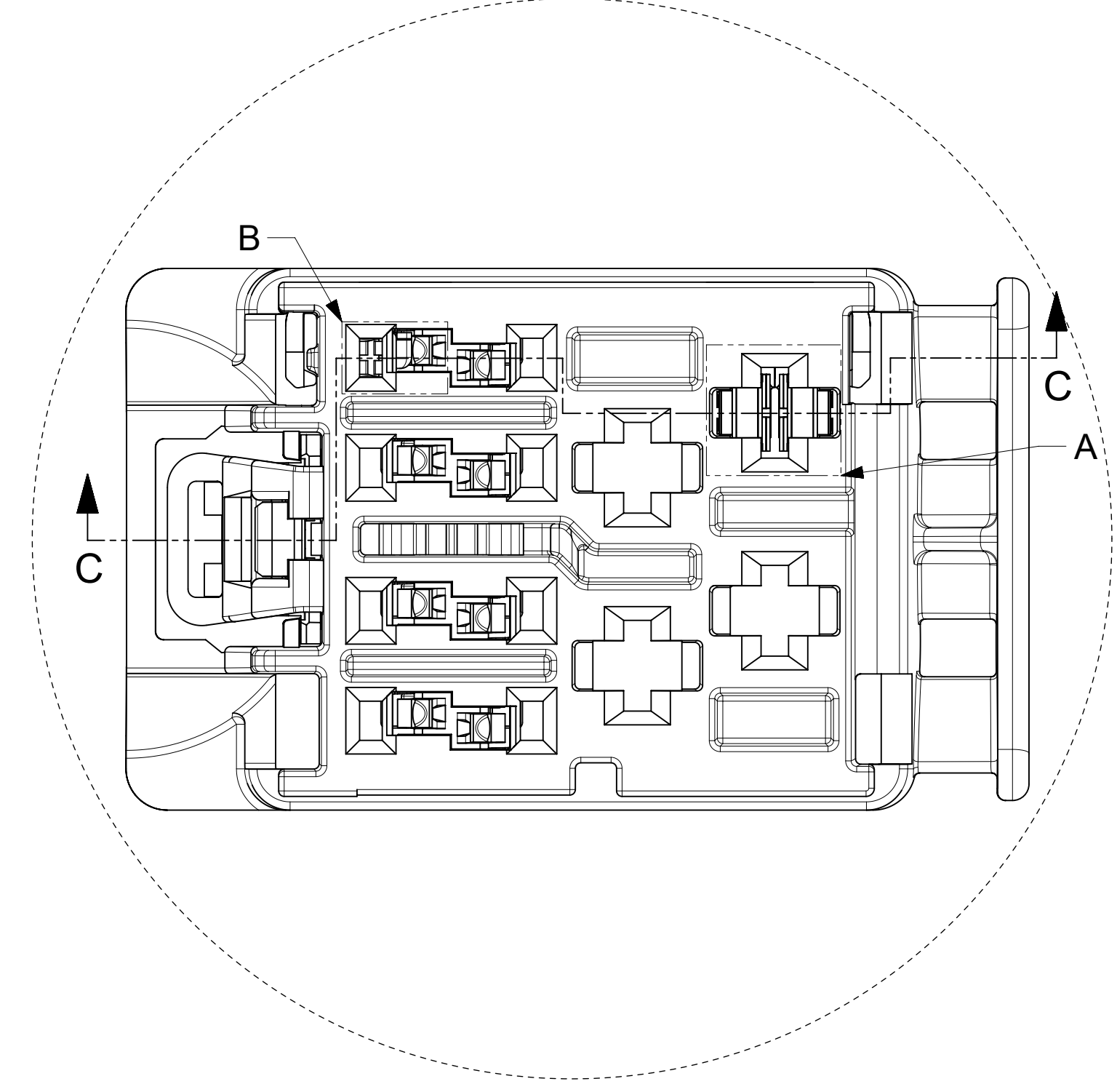
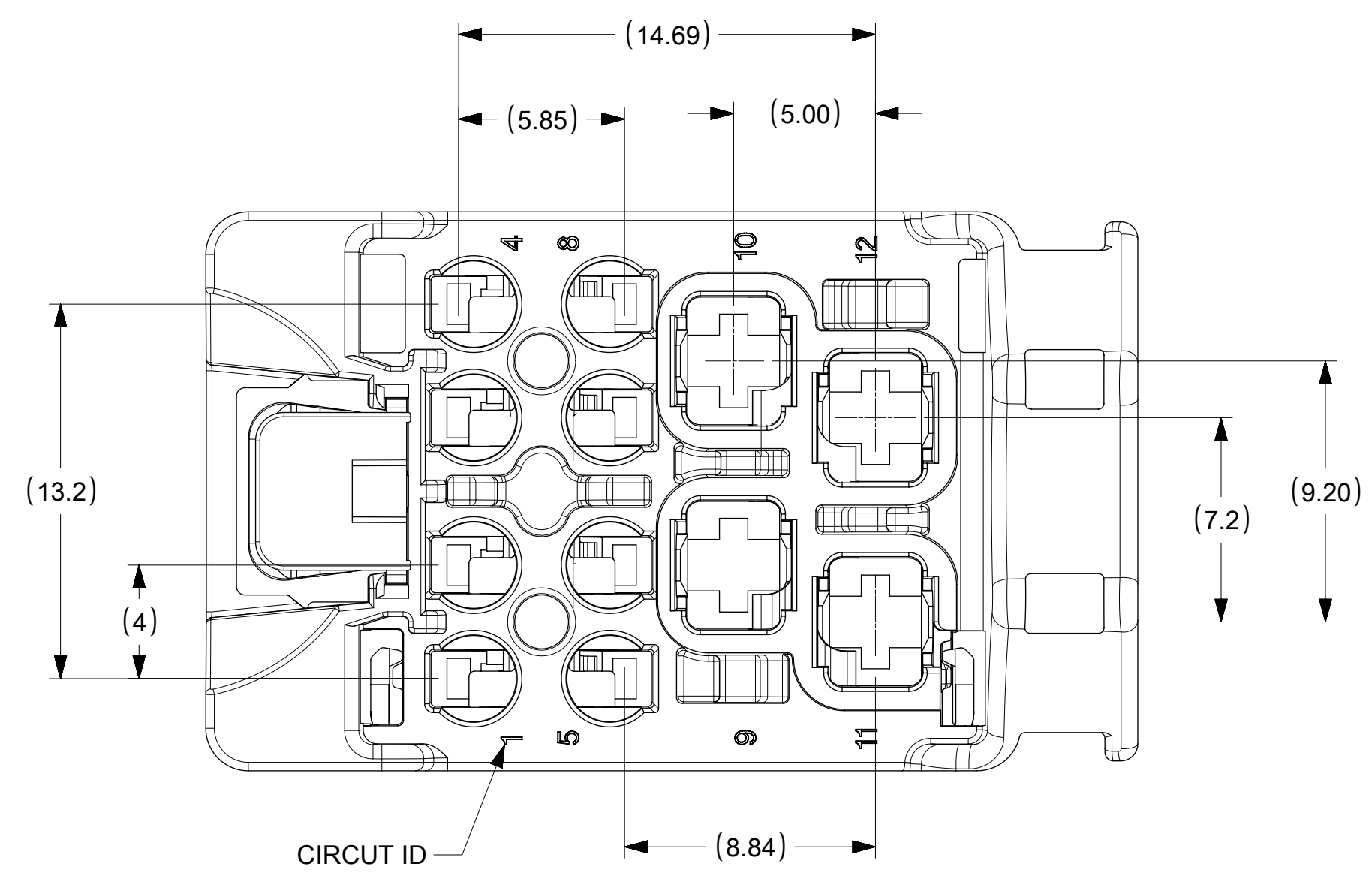
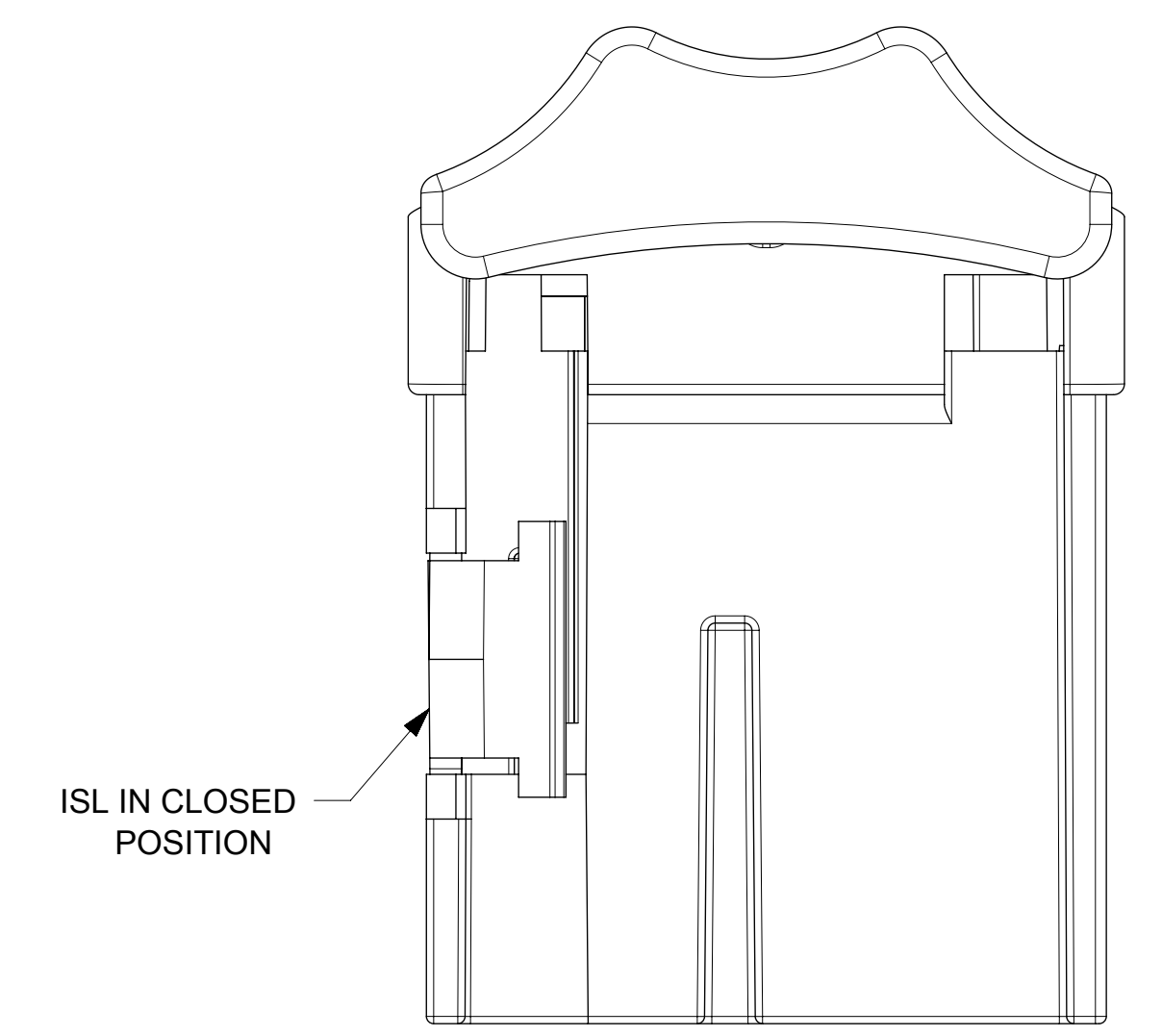
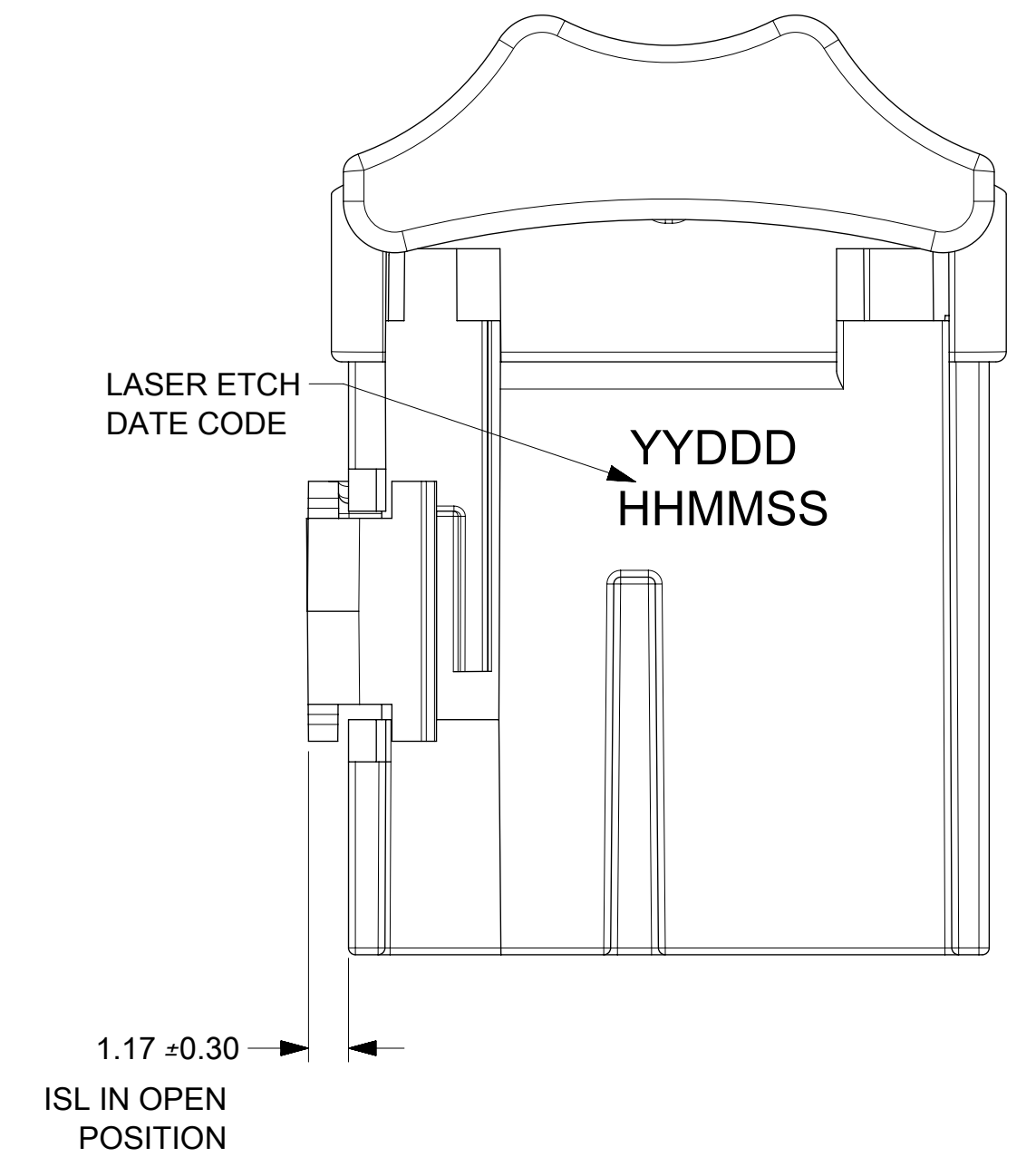
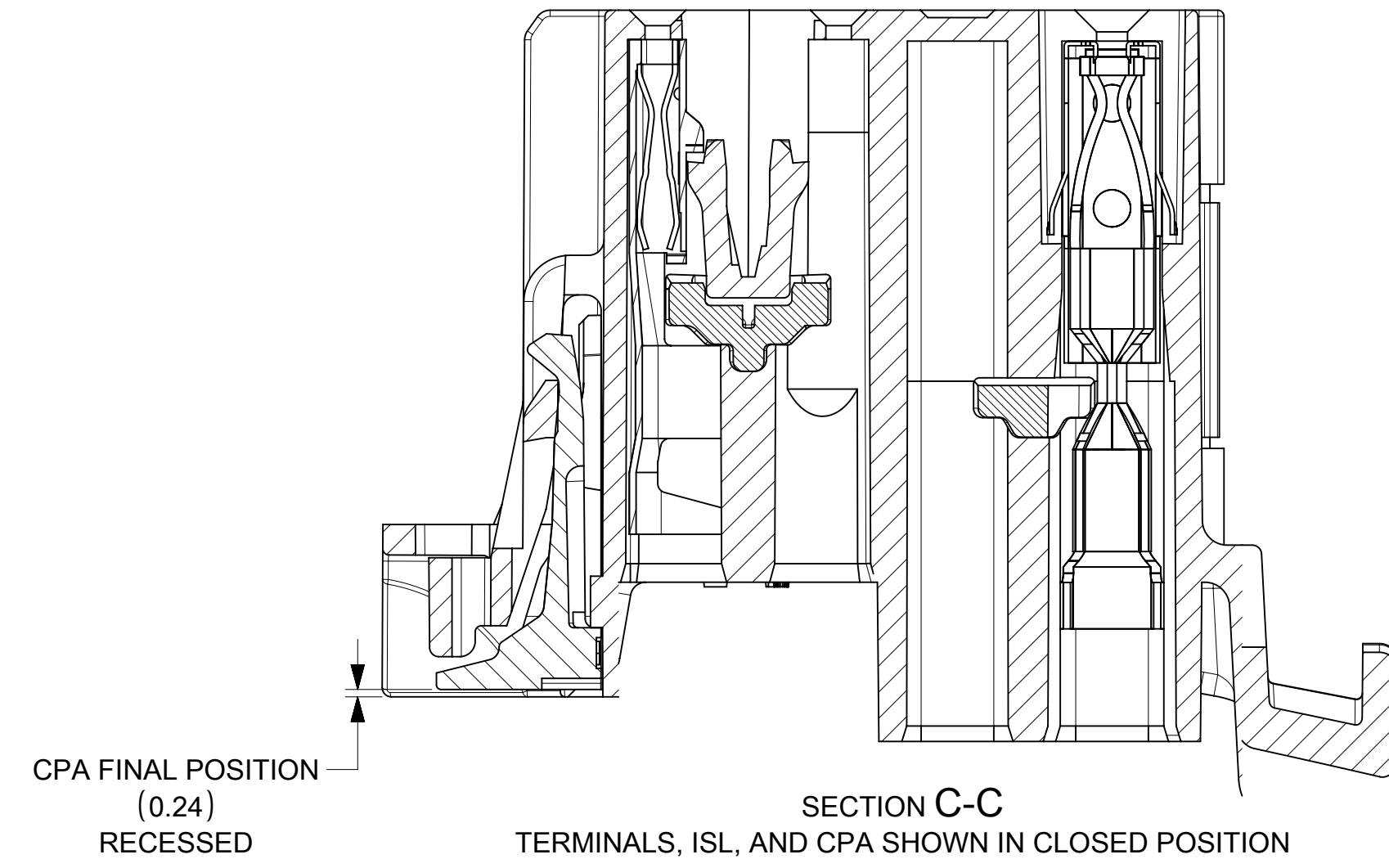
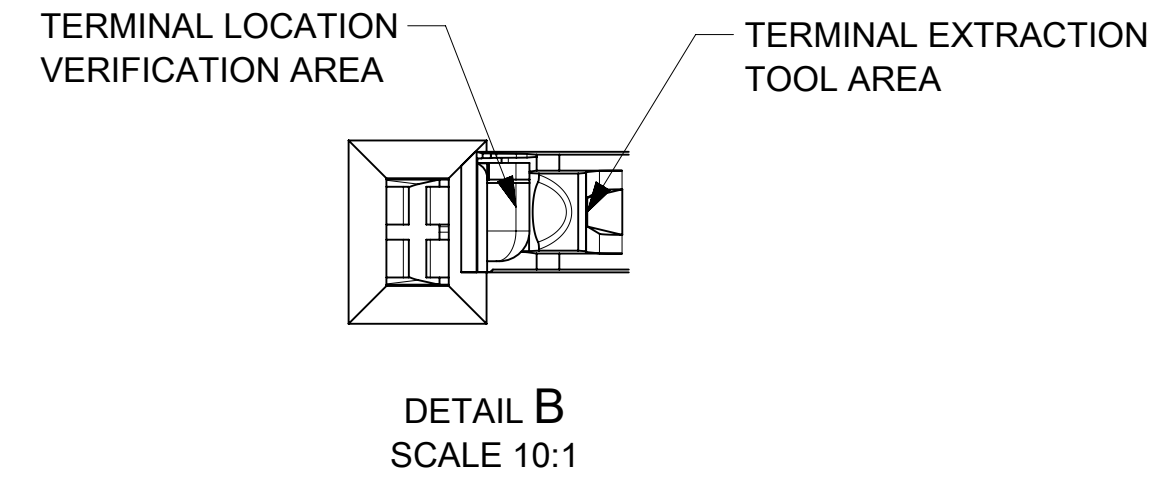
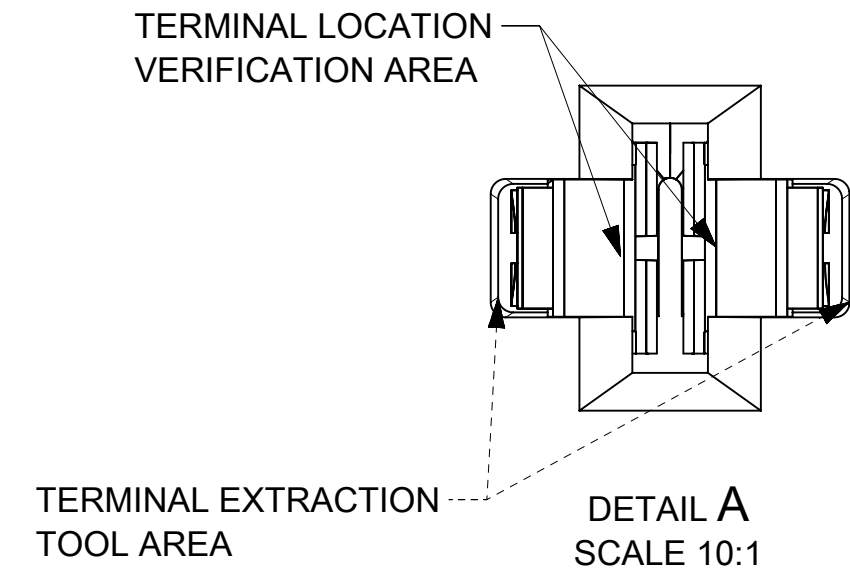
PART NUMBER	PLATING	SUPPLIER	WIRE GAGE (mm2)	TERMINAL FAMILY	WIRE SPECIFICATION
35072403	TIN PLATING	DELPHI	0.35 - 0.5	TAXI TERM OCS 1.2	SAE/ J1128 THIN WALL INSULATION GMW 15626 INSULATION TYPE FLR (REGULAR THIN WALL)
35072404			0.75 - 0.8		
35072405			0.8 - 1.0		
35072406			1.25 - 1.5		
SMSA-A031T-M1.2		JST	0.5 - 0.75	MSA 1.2mm TERMINAL	
SMSA-A041T-M1.2			1.0 - 1.5		
1-968851-1		TE	1.0 - 2.5	AMP MCP 2.8	
1-968849-1			0.5 - 1.0		
15457849	DELPHI	1.5 - 2.5	CTS 2.8mm		
15457848		0.5 - 1.0			

NOTES: VALID UNLESS OTHERWISE SPECIFIED

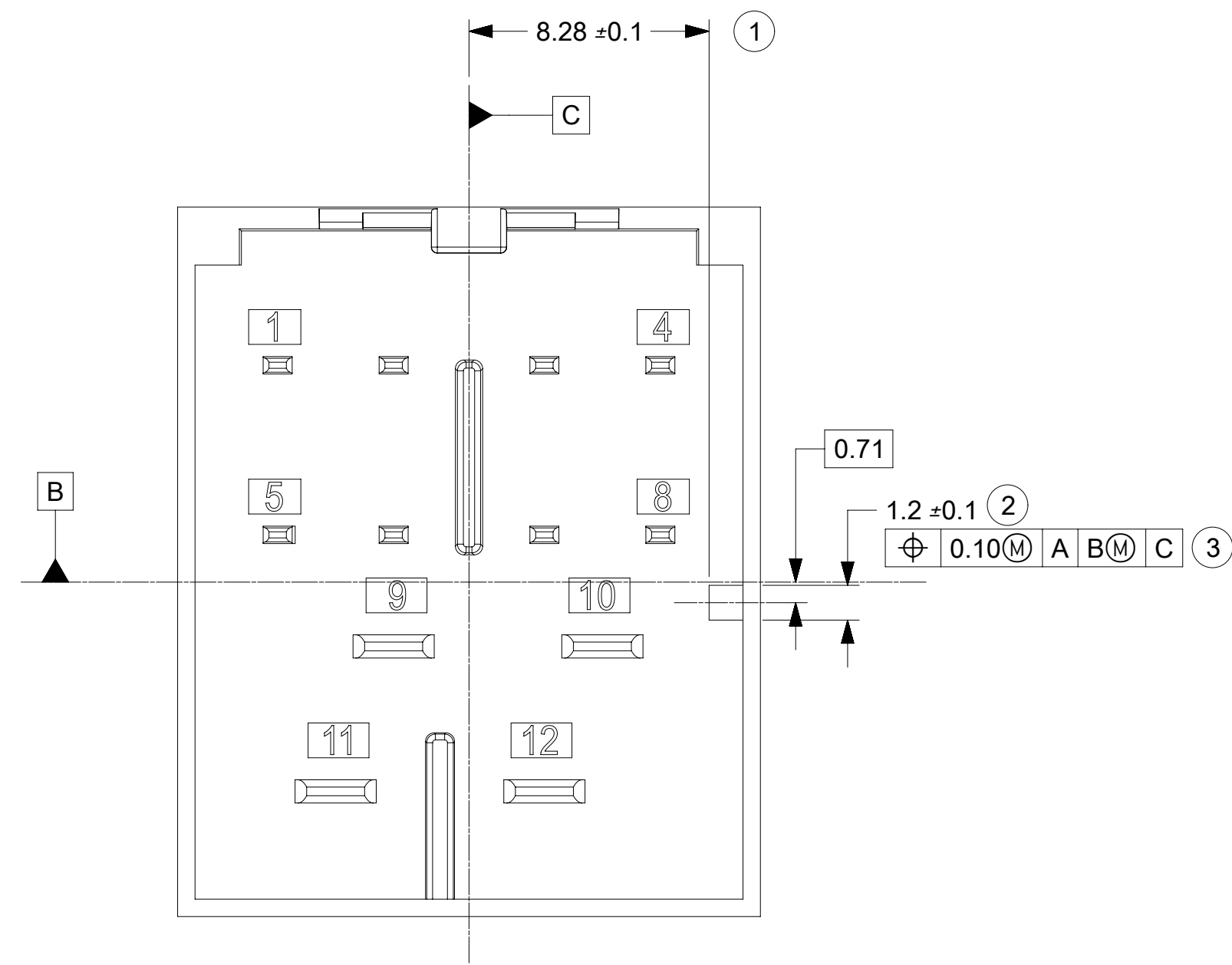
- GENERAL:
 - APPLICATION SPECIFICATION SEE: AS-160014-001
 - PRODUCT SPECIFICATION SEE: PS-160014-001
 - PACKAGING SPECIFICATION PER MOLEX DRAWING: PK-31302-266
 - PARTS MUST BE IN COMPLIANCE TO MOLEX CHEMICAL SUBSTANCES FOR PRODUCTS AND PACKAGING SPECIFICATION: ES-40000-5016
 - DATA MUST BE SUBMITTED UNDER THE MOLEX PART NUMBER TO IMDS (COMPANY ID#13255)
- DESIGN - MATERIALS:
 - SEE BOM TABLE
- DESIGN - GEOMETRY:
 - ALL GRAPHIC DATA IS BASIC (NO TOLERANCE) AND MUST BE TAKEN FROM THE DATA FILE AT ITS LATEST REVISION.
 - PRODUCT DESIGN MODEL NUMBER(S): SEE BOM TABLE
 - GEOMETRIC DIMENSIONS AND TOLERANCES PER ASME Y14.5M-2009
 - EDGES AND UNDIMENSIONED DETAILS PER ISO13715
 - CORNERS SHOWN AS SHARP TO BE R 0.2 MAX.
 - MARKED TEXT TO INCLUDE RECYCLING CODE, CAVITY ID, VENDOR IDENTIFICATION, AND CUSTOMER MATERIAL NUMBER.
 - LASER ETCHED DATE CODE
 - 1ST THROUGH 2ND DIGIT = CALENDAR YEAR
 - 3RD THROUGH 5TH DIGIT = "DAY #" OF YEAR
 - 6TH THROUGH 7TH DIGIT = HOUR OF DAY
 - 8TH THROUGH 9TH DIGIT = MINUTE OF HOUR
 - 10TH THROUGH 11TH DIGIT = SECOND OF MINUTE
- DESIGN - MANUFACTURING:
 - VISUAL DEFECTS SHALL MEET COSMETIC STANDARD PS-45499-002 (Class B)

B2	UPDATED DELPHI 1.2 TERMINAL PNS
B1	UPDATED WIRE GAGE RANGE OF 1.20MM TERMINAL
B	UPDATED VIEWS SAP#: 10898772
A	NX RE-MASTERING SAP # 10816434
4	UUA2015-1899 SAP # 10698159 JCONDON 06/17/2015
3	UUA2015-1606 SAP # 10685685 JCONDON 04/23/2015
1	RELEASE FOR PROTOTYPE SAP # XXXXXXXX

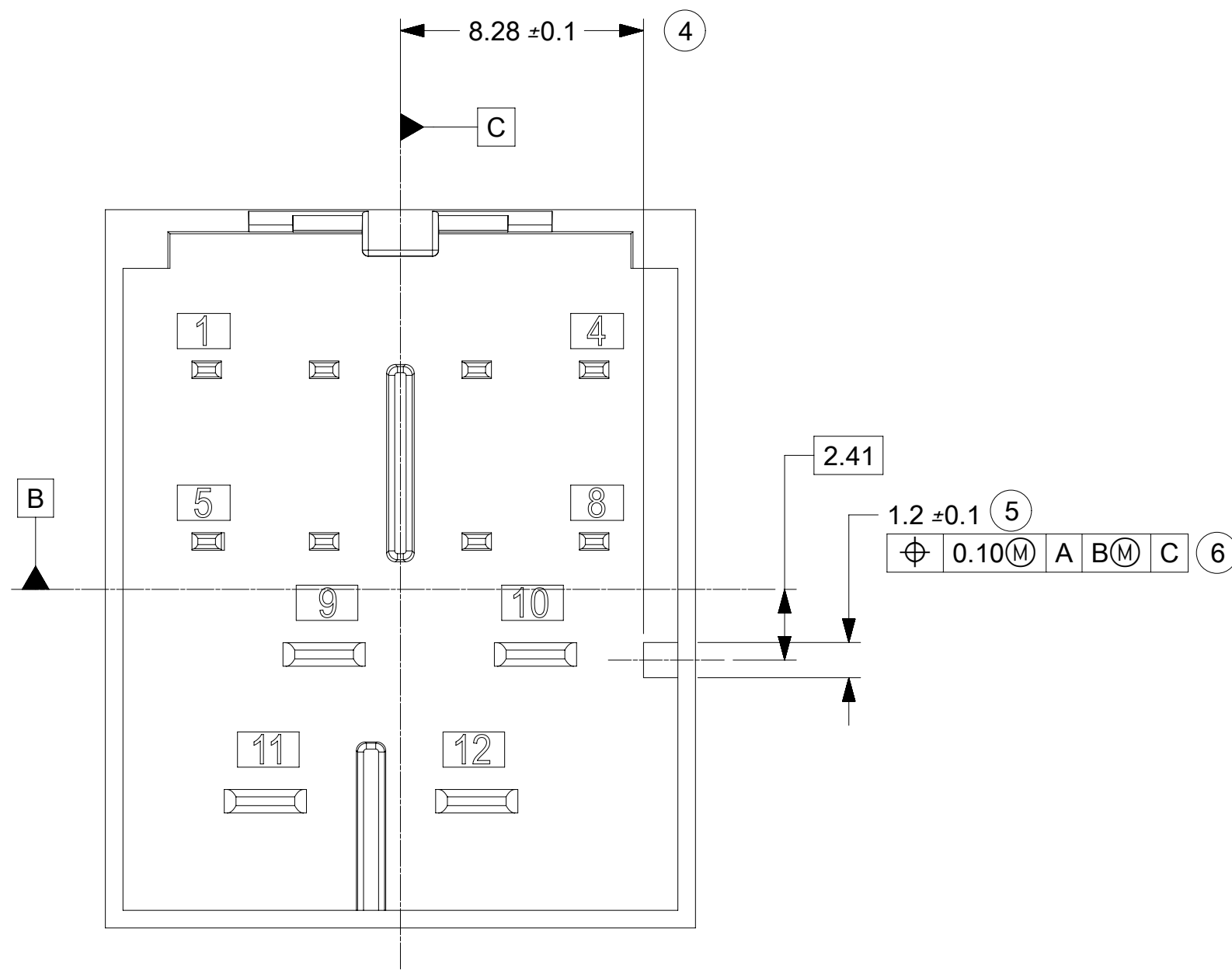
SYMBOLS	THIS DRAWING CONTAINS INFORMATION THAT IS PROPRIETARY TO MOLEX ELECTRONIC TECHNOLOGIES, LLC AND SHOULD NOT BE USED WITHOUT WRITTEN PERMISSION	
	DIMENSION UNITS	SCALE
▽ = 0	mm	CURRENT REV DESC: SEE TABLE
▽ = 0	GENERAL TOLERANCES (UNLESS SPECIFIED)	EC NO: 622293
▽ = 0	ANGULAR TOL ± 3.0°	DRWN: HTGU002 2019/08/13
▽ = 0	4 PLACES ±	CHK'D: JCONDON 2019/08/13
▽ = 0	3 PLACES ±	APPR: JCONDON 2019/08/13
▽ = 0	2 PLACES ± 0.3	INITIAL REVISION:
▽ = 0	1 PLACE ± 0.3	DRWN: VYARAPPA 2017/02/07
▽ = 0	0 PLACES ± 0.3	APPR: KDEKOSKI 2017/03/23
□ = 0	DRAFT WHERE APPLICABLE MUST REMAIN WITHIN DIMENSIONS	THIRD ANGLE PROJECTION
▽ = 0		DRAWING SERIES
	D-SIZE	160026
	SEE CHART	MATERIAL NUMBER
	GENERAL MARKET	CUSTOMER
	1 OF 2	SHEET NUMBER



SYMBOLS	THIS DRAWING CONTAINS INFORMATION THAT IS PROPRIETARY TO MOLEX ELECTRONIC TECHNOLOGIES, LLC AND SHOULD NOT BE USED WITHOUT WRITTEN PERMISSION		
	DIMENSION UNITS	SCALE	CURRENT REV DESC: SEE TABLE
▽ = 0	mm		
▽ = 0	GENERAL TOLERANCES (UNLESS SPECIFIED)		
▽ = 0	ANGULAR TOL	± 3.0°	
▽ = 0	4 PLACES	±	EC NO: 622293
▽ = 0	3 PLACES	±	DRWN: HTGU002 2019/08/13
▽ = 0	2 PLACES	± 0.3	CHK'D: JCONDON 2019/08/13
▽ = 0	1 PLACE	± 0.3	APPR: JCONDON 2019/08/13
▽ = 0	0 PLACES	± 0.3	INITIAL REVISION:
⊠ = 0	DRAFT WHERE APPLICABLE MUST REMAIN WITHIN DIMENSIONS		
⊠ = 0	THIRD ANGLE PROJECTION	DRAWING	SERIES
⊠ = 0		D-SIZE	160026
DOCUMENT NUMBER		DOC TYPE	DOC PART
SD-160026-0001		PSD	000
REVISION		B2	
MATERIAL NUMBER		CUSTOMER	
SEE CHART		GENERAL MARKET	
SHEET NUMBER		2 OF 2	

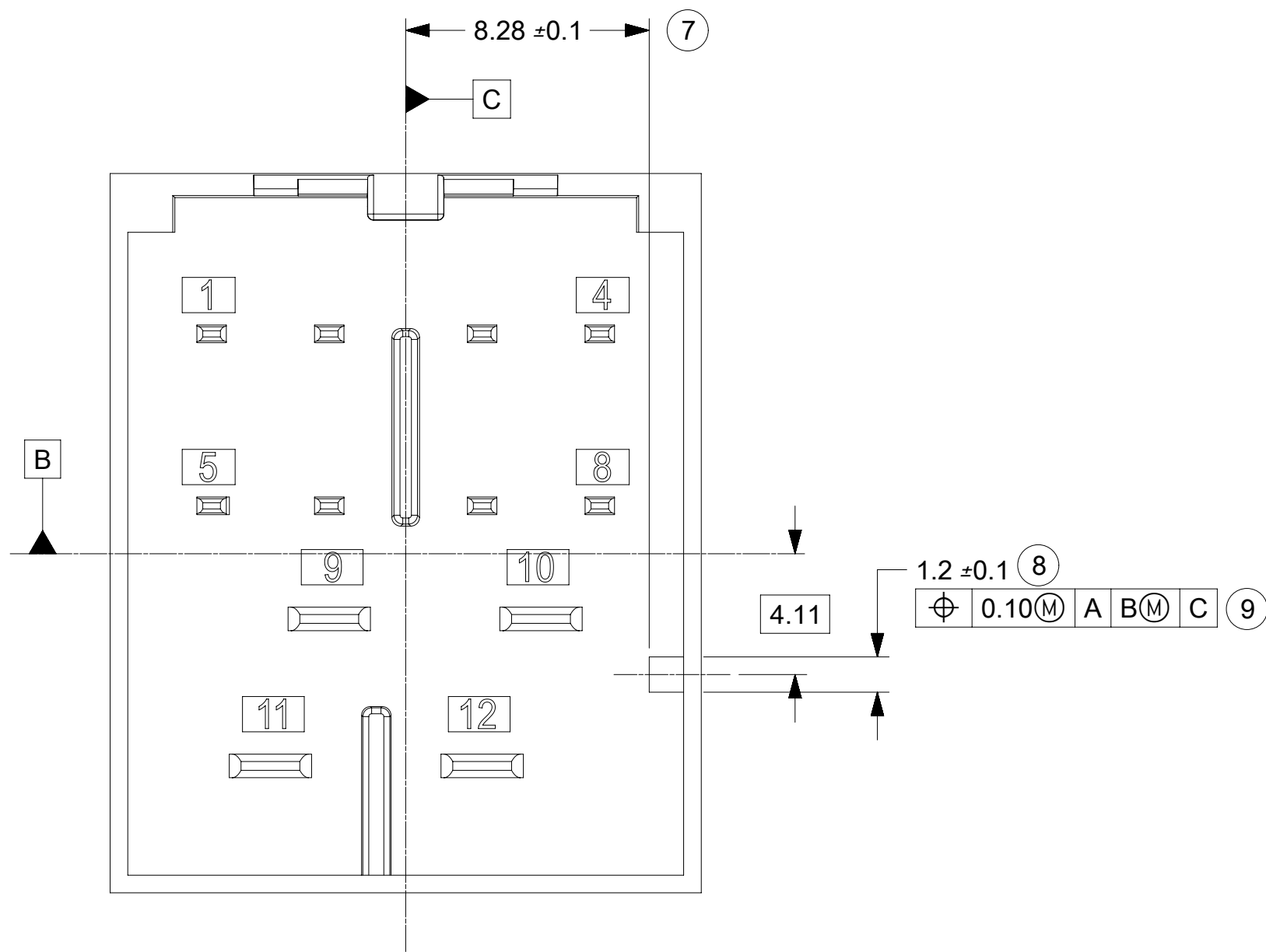


INTERFACE KEY #1
MATING CONNECTOR : BLACK

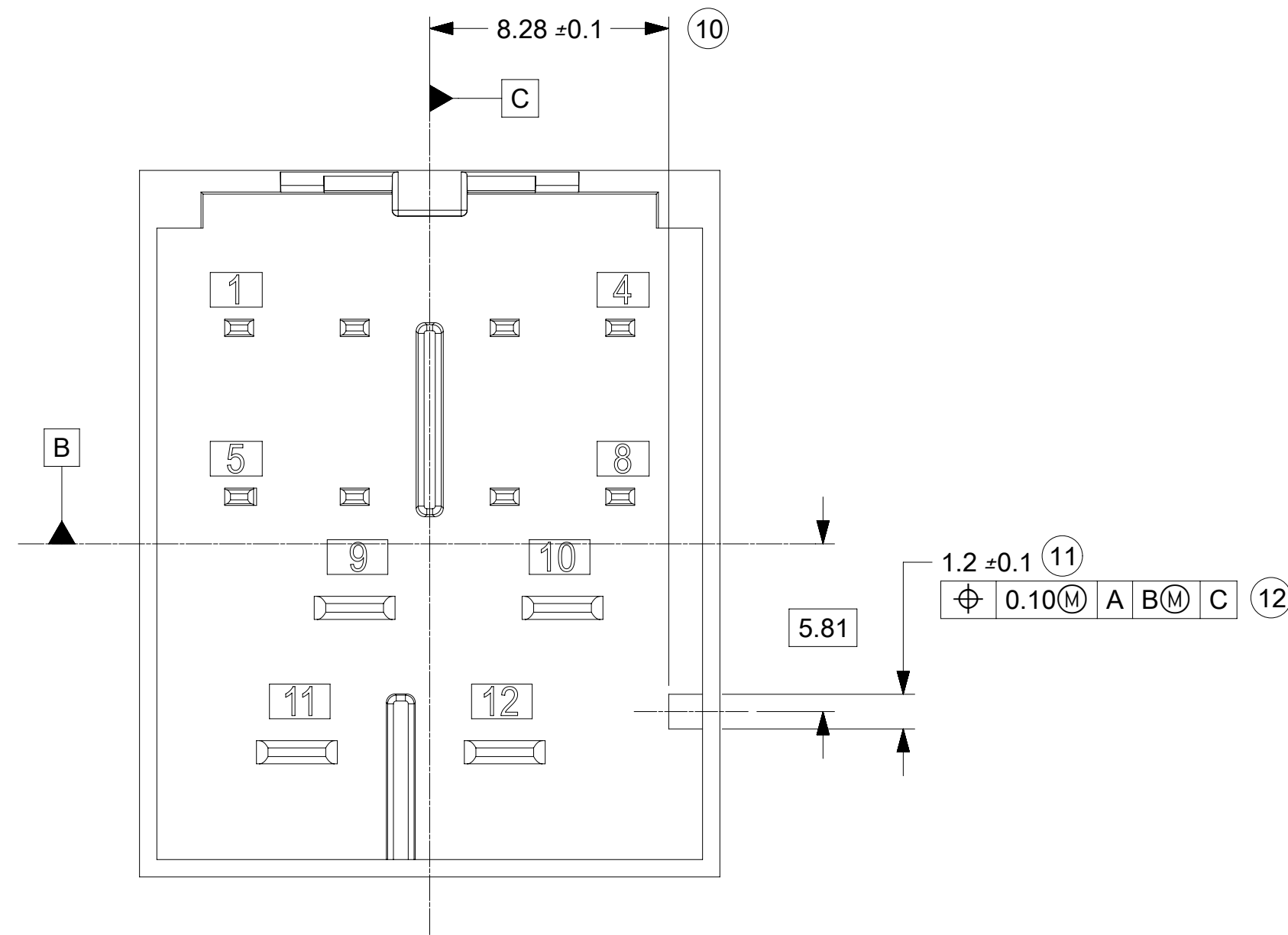


INTERFACE KEY #2
MATING CONNECTOR : LT GREEN B

- NOTES: VALID UNLESS OTHERWISE SPECIFIED
- DESIGN - MATERIALS:
 - RESIN MATERIAL : PBT+GF30 OR SPS+GF30 OR EQUIVALENT
 - PIN/BLADE MATERIAL : ACCORDING TO USCAR DRAWING EWCAP-001 NOTE B2
 - PLATING: ACCORDING TO USCAR DRAWING EWCAP-001 TIN REFLOW WITH UNDERPLATE
 - PIN TIPS ACCORDING TO USCAR DRAWING EWCAP-001 (120-T002 & 280-T001)
 - DEVIATION TO EWCAP-001 ACCEPTABLE IF PERFORMANCE (ELECTRICAL/MECHANICAL) IS SHOWN TO BE EQUAL OR BETTER AS REQUIRED BY VALIDATION TESTING.
 - DEVIATION TO TIN PLATING THICKNESS AS NECESSARY TO MEET MATING FORCE AND ALL VALIDATION REQUIREMENTS
 - DRAWING - GEOMETRY:
 - ALL GRAPHIC DATA IS BASIC (NO TOLERANCE) AND MUST BE TAKEN FROM THE DATA FILE AT ITS LATEST REVISION.
 - GEOMETRIC DIMENSIONS AND TOLERANCES PER ASME Y14.5M-2009.
 - GENERAL TOLERANCES:
 - LINEAR : PER DIN 16901 LINEAR CODE B FOR PRECISION ENGINEERING
 - ANGULAR : ±3°
 - EDGES AND UNDIMENSIONED DETAILS PER ISO13715
 - CORNERS SHOW AS SHARP TO BE R 0.2 MAX.
 - LETTERS SHALL BE 0.15MAX RAISED IN 0.25 MAX RECESSED PAD.
THIS INCLUDES RECYCLING CODE, CAVITY ID, VENDOR IDENTIFICATION, AND CUSTOMER MATERIAL NUMBER.
(for small parts : LETTERING SHALL BE 0.10 MAX RAISED IN 0.15 MAX RECESS PAD)
 - DESIGN - MANUFACTURING:
 - DRAFT TO BE WITHIN TOLERANCE.



INTERFACE KEY #3
MATING CONNECTOR : LT PURPLE



INTERFACE KEY #4
MATING CONNECTOR : LT GRAY

C	ADDED 2.8MM BLADE LENGTH VARIANT FOR MATE FORCE REQUIREMENT ADDED NOTE 1.e.1 CHANGE RECORD: 626144 JPATE 10/22/2019
B1	ADDED BALLOONS JCONDON 07/31/2018
B	REMOVED 0.2MM FROM CONNECTOR LOCK TAB FEATURE
A3	DRAWING CLEANUP
A2	ADDED CIRCUIT IDs
A1	ADDED NOTE 1e, MKOWALSKY 7/7/2017
7	GEOMETRY UPDATED, SPEMMARAJU 02/18/2016
6	UAU2015-1446 , SAP#10681629 , JCONDON 03/25/2015

SYMBOLS	THIS DRAWING CONTAINS INFORMATION THAT IS PROPRIETARY TO MOLEX ELECTRONIC TECHNOLOGIES, LLC AND SHOULD NOT BE USED WITHOUT WRITTEN PERMISSION	
	DIMENSION UNITS	SCALE
▽ = 0	mm	CURRENT REV DESC: ADDED 2.8MM BLADE LENGTH VARIANT FOR MATE FORCE REQUIREMENT ADDED NOTE 1.E.1
▽ = 0	GENERAL TOLERANCES (UNLESS SPECIFIED)	
▽ = 0	ANGULAR TOL ± °	EC NO: 626144
▽ = 0	4 PLACES ±	DRWN: JCONDON 2019/10/08
▽ = 0	3 PLACES ±	CHK'D: DLANGOLF 2019/10/22
▽ = 0	2 PLACES ±	APPR: JCONDON 2019/10/23
▽ = 0	1 PLACE ±	INITIAL REVISION:
▽ = 0	0 PLACES ±	DRWN: SPEMMARAJU 2015/10/27
▽ = 0	DRAFT WHERE APPLICABLE MUST REMAIN WITHIN DIMENSIONS	APPR: KDEKOSKI 2016/03/24
▽ = 0	THIRD ANGLE PROJECTION	DRAWING SERIES
▽ = 0	D-DRAWING	D-SIZE 160026
DOCUMENT NUMBER		DOC TYPE DOC PART REVISION
SD-160026-002		PSD 000 C
MATERIAL NUMBER CUSTOMER		SHEET NUMBER
GENERAL MARKET		1 OF 3

