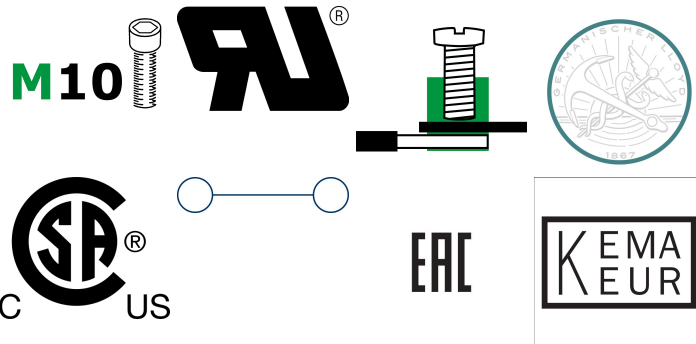


1126.5

RK 240 BU



Feed-through terminal, Screw connection, Mounting type: Mounting rail TS 35/7.5 and TS 32, Rated cross-section: 240 mm<sup>2</sup>, Width: 36 mm, Colour: Blue

## Business data

Packaging unit	5
Quantity unit	PC
Weight per piece (not including packaging)	352.4 g
Weight per piece (including packaging)	373.6 g
Unit of weight	G
Customs number	85369010
Country of origin	CZ
Prio-Article	1126.2
Product description	Feed-through terminal

1126.5

RK 240 BU

---

## Technical data

---

### Dimensions

---

Length	93 mm
Width	36 mm
Height TS 35/7.5	126.3 mm
Height TS 32	132 mm

---

### Ratings

---

Rated voltage	1000 V
Rated current	415 A
Rated cross-section	240 mm <sup>2</sup>
Rated impulse voltage	8 kV
Overvoltage category	III
Contamination degree	3
Maximum power dissipation for nominal condition	12.16 W

---

### Technical data

#### Connection data

Connection principle	Screw connection
Connection position	Lateral
Connections	2
Number of terminals per level	2
Number of levels	1
Wire cross-section single-core (rigid) / stranded, min.	70 mm <sup>2</sup>
Wire cross-section single core (rigid)/stranded, max.	240 mm <sup>2</sup>
Wire cross-section stranded, min.	70 mm <sup>2</sup>
Wire cross-section stranded, max.	240 mm <sup>2</sup>
Wire cross-section stranded with wire-end ferrules, min.	70 mm <sup>2</sup>
Wire cross-section stranded with wire-end ferrules, max.	185 mm <sup>2</sup>
Wire cross-section AWG, min.	2/0
Wire cross-section AWG, max.	500 Kcmil
Stripping length	38 mm
Screw head	Inner hex (Allen)
Screw threading	M 10
Tightening torque, min.	14 Nm
Tightening torque, max.	20 Nm

#### Materials

Insulation housing	Polyamide 6.6
Flammability class UL 94	V-2
Working temperature, min.	-40 °C
Working temperature, max.	105 °C

#### Further technical data

Mounting type	Mounting rail TS 35/7.5 and TS 32
Gauge plug acc. to EN 60 947-1	B16
Banded wire up to	20 x 12 mm

#### Print

Colour	Blue
--------	------

1126.5

RK 240 BU

---

## Technical data

---

### Environmental Product Compliance

---

REACH Conform	yes
REACH Reference date	2021-07-08
REACH Candidate Substance Note	No
RoHS Conform	yes

---

1126.5

RK 240 BU

---

## Approvals

---

### CSA approval

---

CSA File Number	042110_0_000
CSA approval	C22.2 No 158
CSA approval granted	yes
CSA Usegroup C: rated voltage	600 V
CSA Usegroup C: rated current	370 A
CSA wire cross-section AWG, min.	2/0
CSA wire cross-section AWG, max.	500 Kcmil
CSA stripping length	38 mm

### CSAus approval

---

CSAus File Number	042110_0_000
CSAus approval	UL 1059
CSAus approval granted	yes
CSAus Usegroup C: rated voltage	600 V
CSAus Usegroup C: rated current	370 A
CSAus wire cross-section AWG, min.	2/0
CSAus wire cross-section AWG, max.	500 Kcmil
CSAus stripping length	38 mm

1126.5

RK 240 BU

---

## Approvals

---

### UL Recognized

---

UL File Number	E95701
UL approval	UL 1059
UL Usegroup B: rated voltage	600 V
UL Usegroup B: rated current	370 A
UL Usegroup C: rated voltage	600 V
UL Usegroup C: rated current	370 A
UL wire cross-section single-core (rigid) AWG, min.	2/0
UL wire cross-section single-core (rigid) AWG, max.	500 Kcmil
UL wire cross-section stranded AWG, min.	2/0
UL wire cross-section stranded AWG, max.	500 Kcmil
UL torque	142 Lb In
UL wire material	Cu
UL factory wiring	yes
UL Recognized	yes

---

### Standards and regulations

---

EAC approval	TR ZU 004/2011
EAC approval granted	yes

---

### German Lloyd approval

---

GL approval	IEC 60947-7-1:2002
GL approval granted	yes
GL rated voltage	600 V
GL rated current	370 A
GL rated cross-section	240 mm <sup>2</sup>
GL environmental category	C

---

---

### Approvals

---

#### KEMA KEUR approval

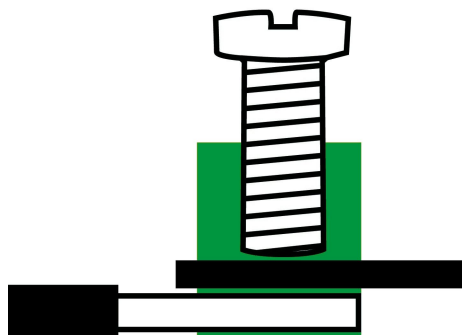
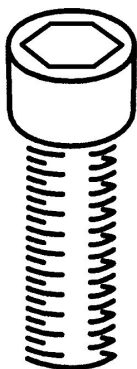
---

KEMA KEUR approval	EN 60947-7-1:2009
KEMA KEUR approval granted	yes
KEMA rated voltage	1000 V
KEMA rated current	415 A
KEMA rated impulse voltage	12 kV
KEMA wire cross-section single core (rigid), min.	50 mm <sup>2</sup>
KEMA wire cross-section single-core (rigid), max.	240 mm <sup>2</sup>
KEMA wire cross-section stranded, min.	70 mm <sup>2</sup>
KEMA wire cross-section stranded, max.	240 mm <sup>2</sup>
KEMA stripping length	38 mm
KEMA torque, min.	14 Nm
KEMA torque, max.	20 Nm

---

### Media

**M 10**





**EAC**



1126.5

RK 240 BU

---

## Accessories

---

### Cover

---



Cover, Length: 60 mm, Width: 25.5 mm,  
Colour: Yellow

---

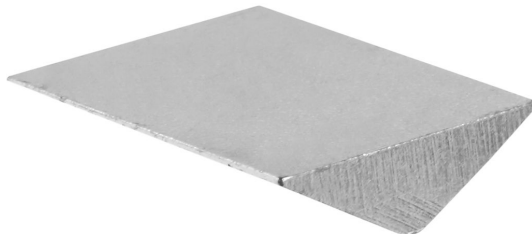
### General order data

Product number:	Article name	GTIN (EAN)	Packaging unit
2808.0	AD 1/240/B YE	4044211055370	20 ST

---

### Inlay profile

---



Inlay plate, Colour: natural

---

### General order data

Product number:	Article name	GTIN (EAN)	Packaging unit
2360.0	EP 240	4044211051495	10 ST

---

**1126.5**  
**RK 240 BU**

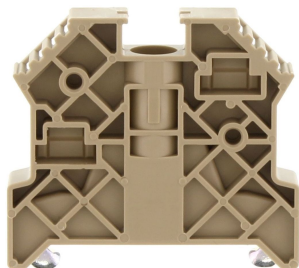
---

## Accessories

---

### End stop

---



End stop, Mounting type: Mounting rail TS 35/7.5, Width: 9.5 mm, Colour: Beige

---

#### General order data

Product number:	Article name	GTIN (EAN)	Packaging unit
2828.0	ES 35/K/ST BG	4044211055547	50

---

### Allen key socket wrench

---



Inner hex key with bare blade

---

#### General order data

Product number:	Article name	GTIN (EAN)	Packaging unit
2773.0	ISKS 8	4044211055035	1 ST

---

1126.5

RK 240 BU

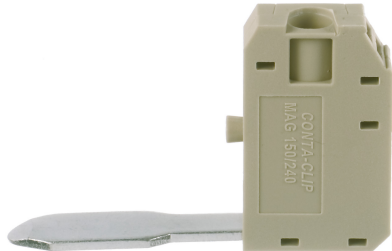
---

## Accessories

---

### Measurement pick-off terminal

---



Measurement pick-off terminal, Screw connection, Mounting type: On base, Rated cross-section: 10 mm<sup>2</sup>, Width: 10 mm, Colour: Beige

---

### General order data

Product number:	Article name	GTIN (EAN)	Packaging unit
1125.2	MAG 150/240 BG	4044211080921	10 ST

---

**1126.5**  
**RK 240 BU**

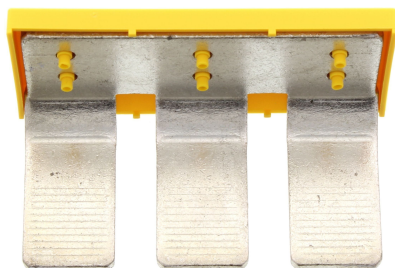
---

## Accessories

---

### Insulated cross-connector

---



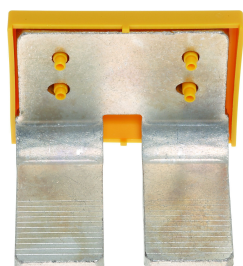
External insulated cross-connector, No. of poles: 3, Mounting type: Plug in, Width: 103.12 mm, Rated current: 380 A; Colour: Yellow

---

#### General order data

Product number:	Article name	GTIN (EAN)	Packaging unit
2770.2	AQI 3/240 YE	4044211055004	5

---



External insulated cross-connector, No. of poles: 2, Mounting type: Plug in, Width: 66.28 mm, Rated current: 380 A; Colour: Yellow

---

#### General order data

Product number:	Article name	GTIN (EAN)	Packaging unit
2769.2	AQI 2/240 YE	4044211054991	5

---

1126.5

RK 240 BU

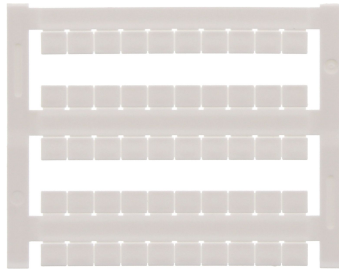
---

## Accessories

---

### Quick marking

---



Terminal marker / Pocket Maxicard, Length: 5 mm, Width: 6 mm, Colour: White

---

### General order data

Product number:	Article name	GTIN (EAN)	Packaging unit
4702.7	PMC SB 6/50 WH	4044211089986	500 ST

---