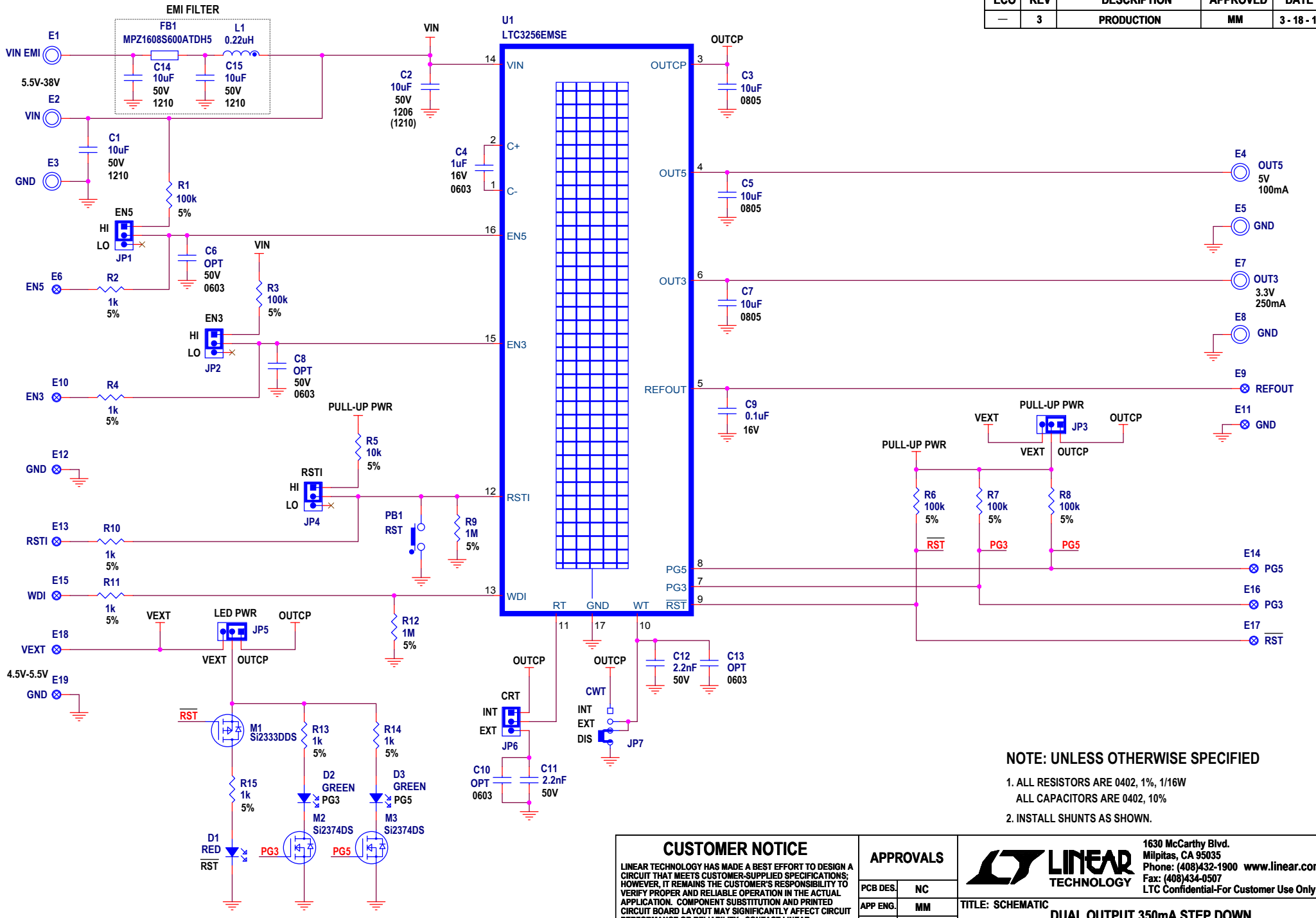


REVISION HISTORY

ECO	REV	DESCRIPTION	APPROVED	DATE
-	3	PRODUCTION	MM	3-18-16



NOTE: UNLESS OTHERWISE SPECIFIED

1. ALL RESISTORS ARE 0402, 1%, 1/16W
2. ALL CAPACITORS ARE 0402, 10%
3. INSTALL SHUNTS AS SHOWN.

CUSTOMER NOTICE		APPROVALS			1630 McCarthy Blvd. Milpitas, CA 95035 Phone: (408)432-1900 www.linear.com Fax: (408)434-0507 LTC Confidential-For Customer Use Only		
LINEAR TECHNOLOGY HAS MADE A BEST EFFORT TO DESIGN A CIRCUIT THAT MEETS CUSTOMER-SUPPLIED SPECIFICATIONS; HOWEVER, IT REMAINS THE CUSTOMER'S RESPONSIBILITY TO VERIFY PROPER AND RELIABLE OPERATION IN THE ACTUAL APPLICATION. COMPONENT SUBSTITUTION AND PRINTED CIRCUIT BOARD LAYOUT MAY SIGNIFICANTLY AFFECT CIRCUIT PERFORMANCE OR RELIABILITY. CONTACT LINEAR TECHNOLOGY APPLICATIONS ENGINEERING FOR ASSISTANCE.		PCB DES.	NC		TITLE: SCHEMATIC		
		APP ENG.	MM	DUAL OUTPUT 350mA STEP DOWN CHARGE PUMP WITH WATCHDOG TIMER			
		SCALE = NONE		SIZE	IC NO.	REV.	
THIS CIRCUIT IS PROPRIETARY TO LINEAR TECHNOLOGY AND SUPPLIED FOR USE WITH LINEAR TECHNOLOGY PARTS.				N/A	LTC3256EMSE DEMO CIRCUIT2375A	3	
		DATE:	3-18-16	SHEET 1 OF 1			