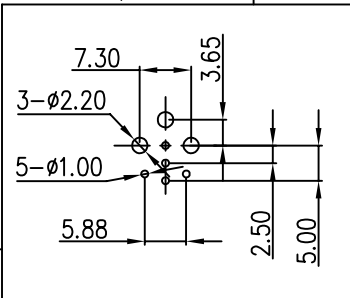
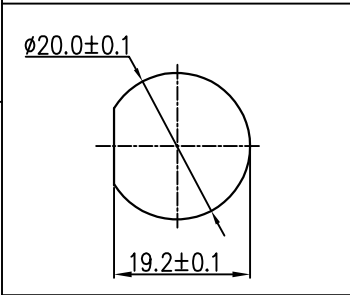


THIS INFORMATION IS CONFIDENTIAL AND IS DISCLOSED TO YOU ON CONDITION THAT NO FURTHER DISCLOSURE IS MADE BY YOU TO OTHER THAN CHOGORI PERSONNEL WITHOUT AUTHORIZATION FROM CHOGORI CORP.

| REV. | ECN NO. | DESCRIPTION | SIGN | DATE |
|------|---------|-----------------|------|------------|
| C1 | N/A | INITIAL DRAWING | Liu | 2020/05/17 |

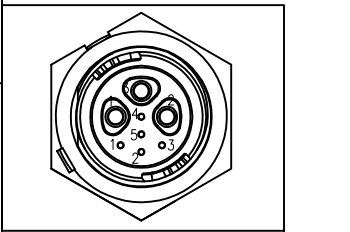


3F5M
PCB Layout



Recommended Panel Cut-Out

23XXX635-02
Pin Number



3F+5M

P/N: 23305635-02

Pin Assignments
Front View

| | |
|-----------|-------|
| UNIT:mm | |
| TOLERANCE | |
| .X | ±0.25 |
| .XX | ±0.15 |
| .XXX | ±0.05 |
| ANGLES | ±1° |

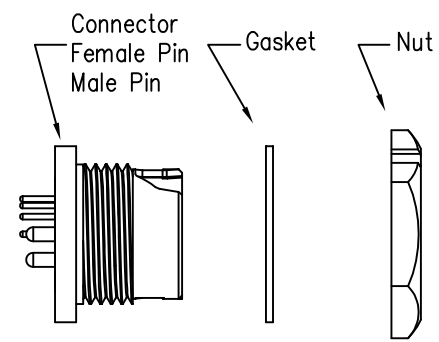
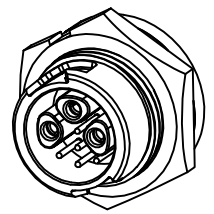
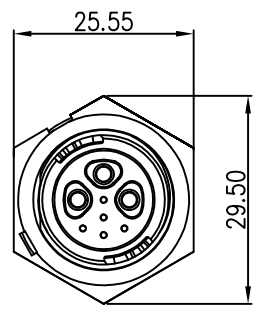
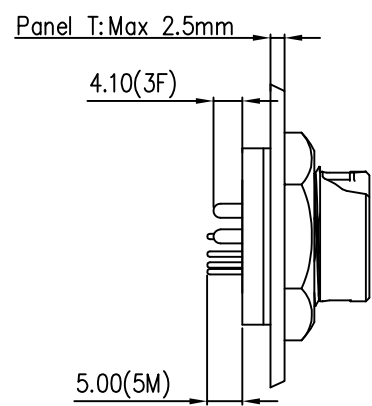
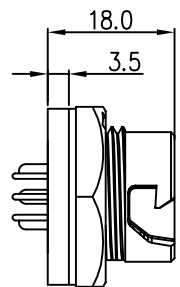
| | | | |
|-------------|--|-------|--------------------|
| DESCRIPTION | Middle Series 3F+5M Push Lock Front Mount | | |
| SCALE: | 1:1 | SHEET | 1 OF 1 |
| REV. | C1 | SIZE | A4 |
| | | | * :Inspection Item |



| | |
|----------|-------------|
| PART NO | 23305635-02 |
| DWG NO | |
| CUSTOMER | |

| | |
|-------------|-------|
| DRAWN BY | Liu |
| CHECKED BY | Mo |
| APPROVED BY | Adley |

| | |
|------|------------|
| DATE | 2020/05/17 |
| DATE | 2020/05/17 |
| DATE | 2020/05/17 |



- Specification:
- 1.Operation Temperature: -45°C~105°C.
 - 2.Insulation Resistance:100MΩ at DC500V.
 - 3.Contact Resistance:<10mΩ.
 - 4.Withstand Voltage:1000V AC
 - 5.Operating Current:15A+2A
 - 6.Operating Voltage:DC 125V+30V
 - 7.Waterproof Rate:IP67 (Mated)
 - 8.Housing:Nylon, Black
 - 9.Female Pin:Copper Alloy, Gold Plated
 - 10.Male Pin:Copper Alloy, Gold Plated
 - 11.Gasket:Silicon Gray
 - 12.Panel Nut:Nylon, Blue
 - 13.Torque Rate:0.8~1.0N • m
 - 14.RoHS Compliant.
 - 15.Mating Cap P/N:806-00047-00