



Environment Sensor (USB Type) (2JCIE-BU01)

Driver Installation Manual

Table of Contents

1. Introduction	3
2. Installing 2JCIE Device Driver for Windows	3
2.1. Installing 2JCIE Device Driver	3
2.2. Procedure for installing 2JCIE Driver	3
3. Installing 2JCIE Device Driver for Linux	10
3.1. Custom ID	10
3.2. Procedure for installing	10
4. Version history	11

1. Introduction

This is an instruction manual to install the driver for Environment Sensor (USB Type) (2JCIE-BU01).

2. Installing 2JCIE Device Driver for Windows

2.1. Installing 2JCIE Device Driver

Unzip CDM v2.12.28 2JCIE.zip to any folder on your PC.

2.2. Procedure for installing 2JCIE Driver

Connect Environment Sensor (USB Type) to your PC.

- (1) Confirm driver installation is complete normally after checking the property of COM port from Device Manager.

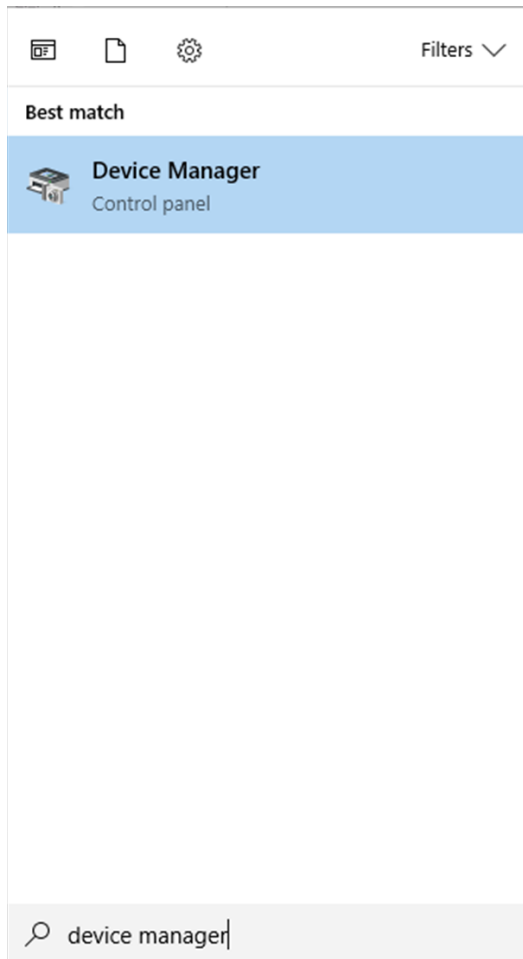


Figure 1 Launch Device Manager

(2) When driver was installed normally, “2JCIE-BU01 Serial Port” is shown to “Ports (COM & LPT)”.
 In this case, driver installation is complete.

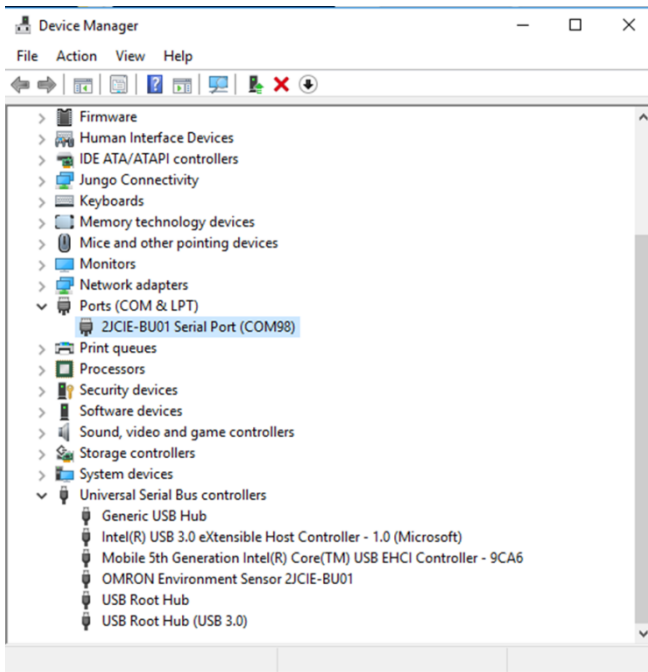


Figure 2 Case of driver installation normally complete

When driver installation was incomplete, “2JCIE-BU01” is shown to “Other devices”.
 In this case, proceed to Step (3).

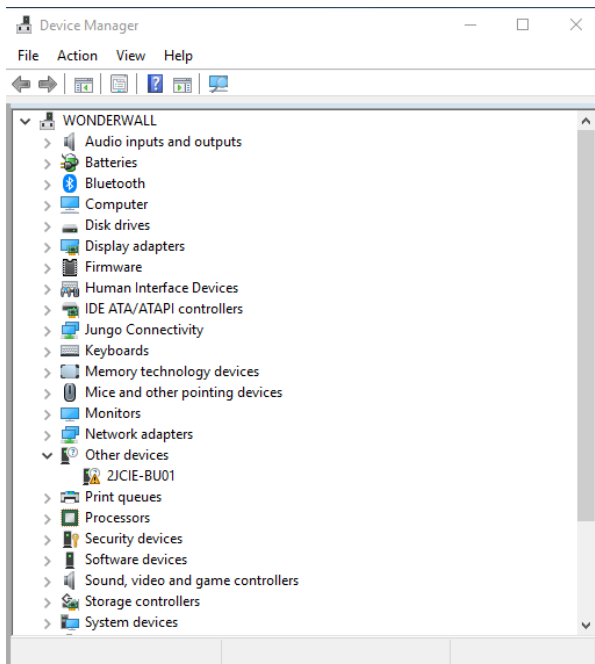


Figure 3 Case of driver installation incomplete

(3) Right-click “2JCIE-BU01” and select “Update driver”.

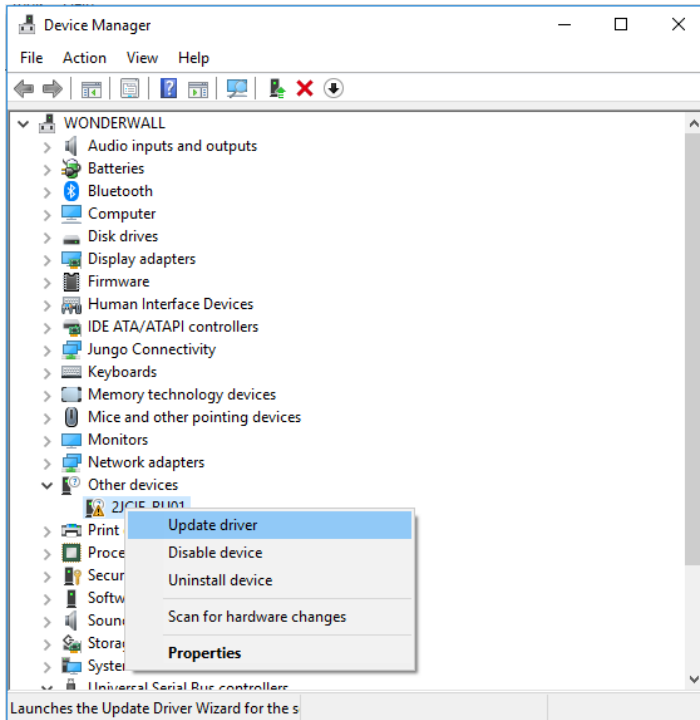


Figure 4 Update driver

Select “Browse my computer for driver software.”

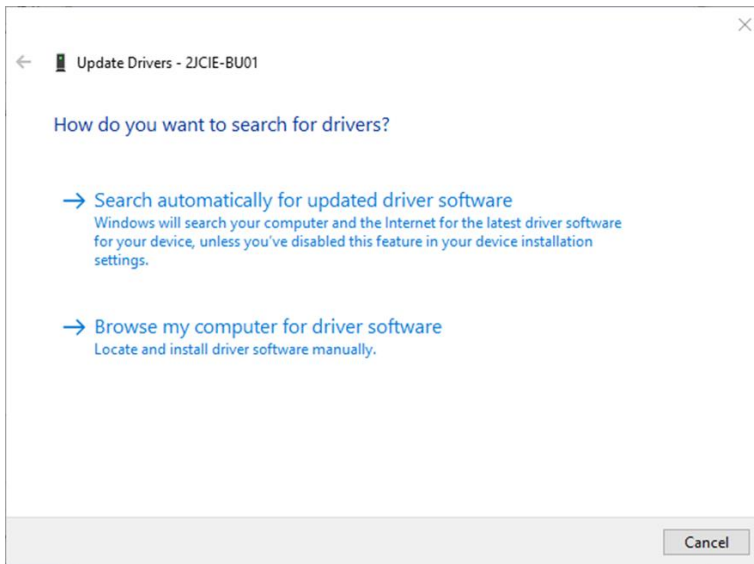


Figure 5 Select update method for driver

Select "CDM v2.12.28 2JCIE" unzipped in "2.1 Installing 2JCIE Device Driver".

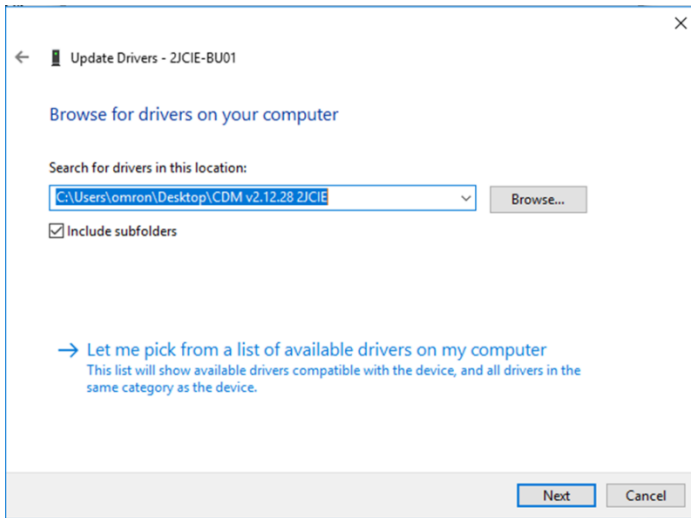


Figure 6 Select driver

Displays message "Windows has successfully your drivers".
 "OMRON Environment Sensor 2JCIE-BU01" is recognized as "Universal serial bus controllers".

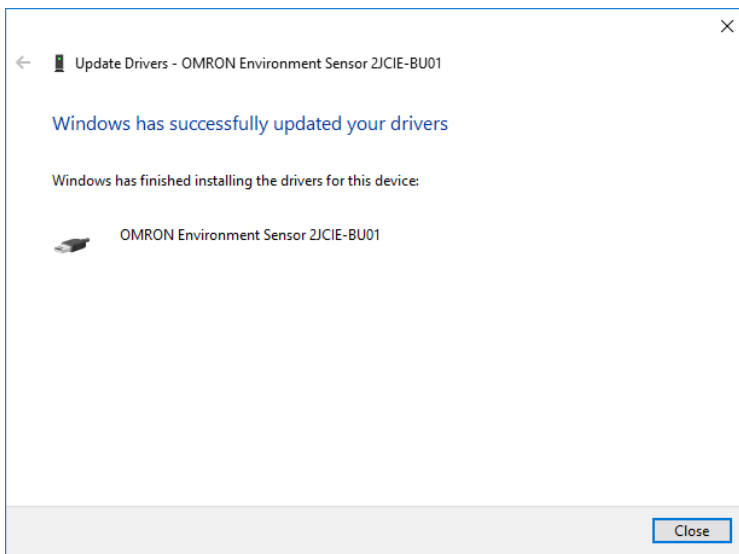


Figure 7 Update driver

(4) "USB Serial Port" is shown in "Other devices", so select "Update driver" from right-click menu.

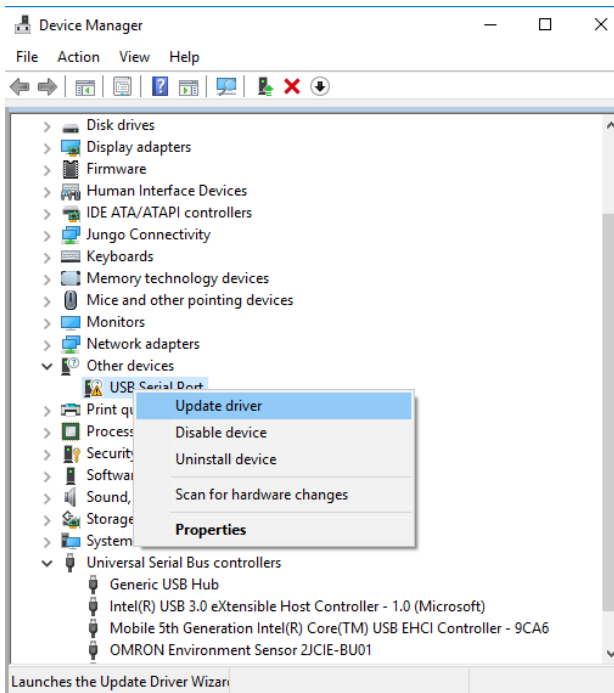


Figure 8 Update driver

Select "Browse my computer for driver software".

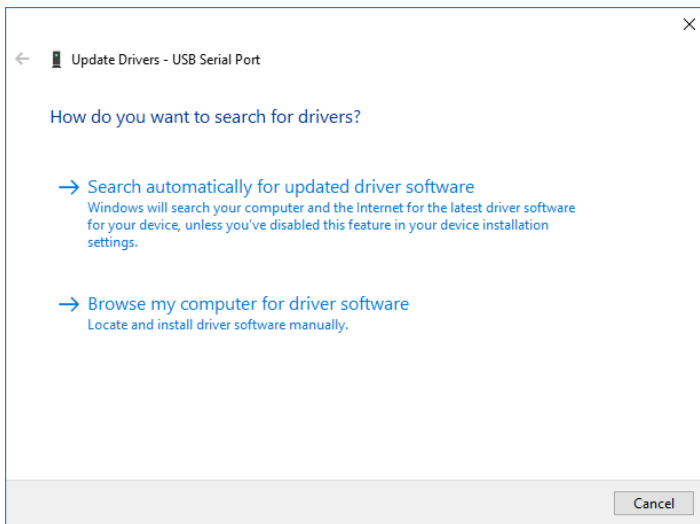


Figure 9 Select update method for driver

Select "CDM v2.12.28 2JCIE" unzipped in "2.1 Installing 2JCIE Device Driver".

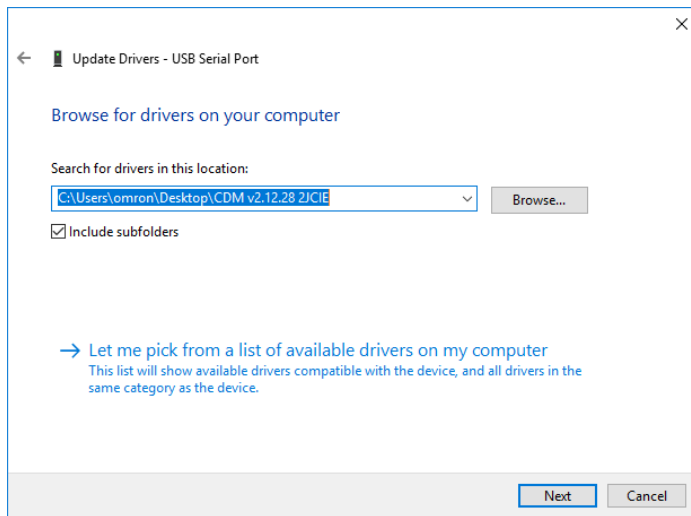


Figure 10 Select driver

Displays message "Windows has successfully updated your drivers".

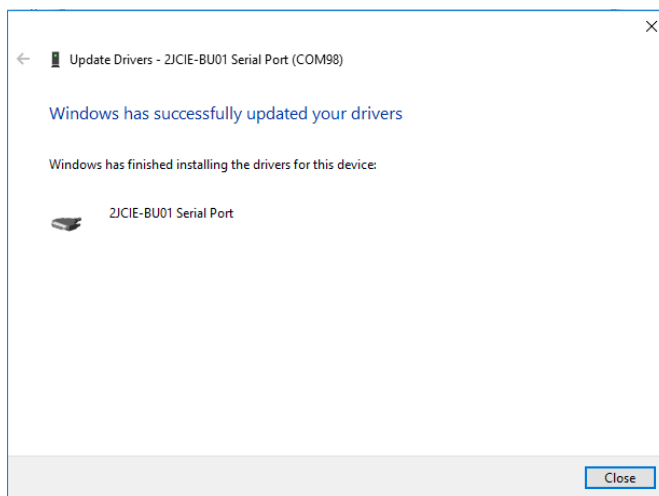


Figure 11 Update driver

(5) "2JCIE-BU01 Serial Port" is shown to "Ports (COM & LPT)".

This driver installation is complete.

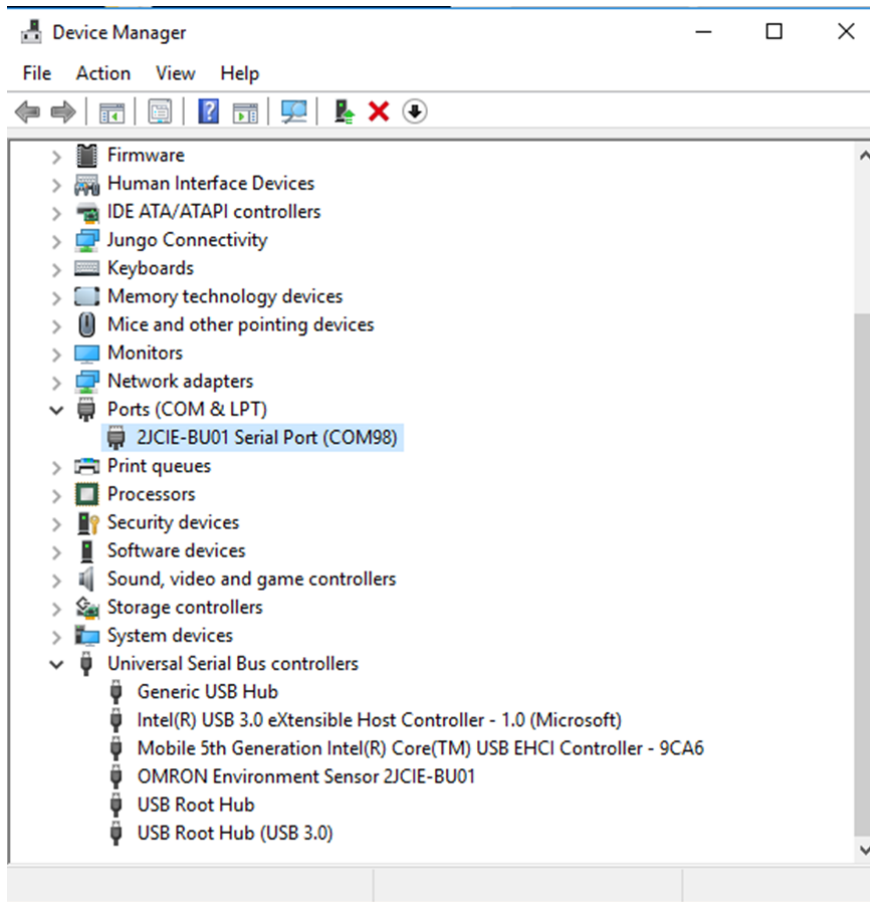


Figure 12 Install driver

3. Installing 2JCIE Device Driver for Linux

3.1. Custom ID

Vendor ID and Device ID of Environment Sensor (USB Type) are shown in Table 1.

Table 1 List of ID

Item	HEX
Vendor ID (VID)	0x0590
Device ID (DID)	0x00D4

3.2. Procedure for installing

(1) Load driver that is provided with OS.

```
1 modprobe ftdi_sio
```

(2) Connect Environment Sensor (USB Type) to USB port on your PC.

(3) Add Vender ID and Device ID to the following file.

/sys/bus/usb-serial/drivers/ftdi_sio/new_id

```
1 0590 00d4
```

(4) Execute the following command.

```
1 ls -al /dev/ttyUSB*
```

(5) Confirm that ttyUSB* is recognized.

```
1 crw-rw---- 1 root dialout 188, 0 Jun 27 12:00 /dev/ttyUSB0
```

(6) Execute the following sample script after booting OS because this setting is invalidated by reboot of OS.

(Example)Sample script

```
1 #!/bin/sh -e
2 #
3 # sample script call from rc.local or etc...
4 #
5
6 modprobe ftdi_sio
7 echo 0590 00d4 > /sys/bus/usb-serial/drivers/ftdi_sio/new_id
8
```

4. Version history

#	Version	Date	Change
1	1.0	29 th Jun. 2018	Released