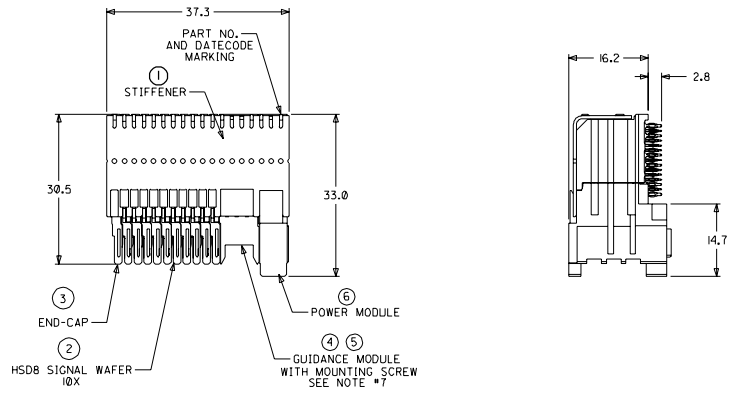
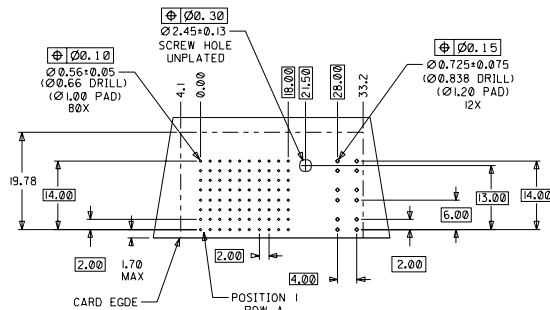
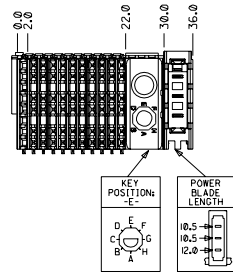


CUSTOMER: OCCAM NETWORKS



NOTES: (UNLESS OTHERWISE SPECIFIED)

1. MATERIALS: HOUSING - LIQUID CRYSTAL POLYMER (LCP), GLASS-FILLED, UL94V-0, BLACK.  
TERMINALS - HIGH PERFORMANCE COPPER ALLOY.  
STIFFENER - STAINLESS STEEL.
2. FINISH: SELECTIVE GOLD (Au) IN CONTACT AREA, 0.00076mm MINIMUM THICKNESS; SELECTIVE TIN/LEAD (Sn/Pb) ON PCB TAILS, NICKEL (Ni) OVERALL.
3. REFER TO MOLEX PRODUCT SPECIFICATION PS-74031-999 FOR PERFORMANCE SPECIFICATIONS.
4. REFER TO MOLEX DOCUMENT SD-74681-002 FOR ADDITIONAL DETAIL ON THE HSD8 SIGNAL WAFER.
5. REFER TO MOLEX DOCUMENT SD-74037-006 FOR ADDITIONAL DETAIL ON THE GUIDANCE MODULE.
6. REFER TO MOLEX DOCUMENT SD-74026-002 FOR ADDITIONAL DETAIL ON THE POWER MODULE.
7. MOUNTING SCREWS WILL BE BAGGED WITH EACH CONNECTOR.
8. PARTS ARE PACKAGED IN TUBES PER PK-70873-5041.



DAUGHTERCARD HOLE PATTERN  
(CONNECTOR SIDE)

ITEM	PART NUMBER	DESCRIPTION	QTY
1	74046-0037	STIFFENER	1
2	74681-0001	HSD8 SIGNAL WAFER	10
3	74038-1001	END CAP	1
4	74037-8005	POLARIZING/GUIDE MODULE	1
5	73726-0000	GUIDE MODULE MNTG SCREW	1
6	74026-8433	POWER MODULE	1

INITIAL RELEASE EC NO. UDT2002-0644 DRAWN: ATP 01/10/22 CHECKED: LAURX 01/10/22 APPR: BIXLER 01/10/22	QUALITY SYMBOLS MAJOR: 4 CRITICAL: 2	GENERAL TOLERANCES (UNLESS SPECIFIED)		SCALE: 2:1	DESIGN UNITS: <input checked="" type="checkbox"/> mm <input type="checkbox"/> INCH	DIMENSIONS: <input type="checkbox"/> mm <input type="checkbox"/> INCH <input checked="" type="checkbox"/> ONLY		SHT	REV	
		DRAWN BY & DATE		THIRD ANGLE PROJECTION		TITLE: 8 ROW HSD DAUGHTERCARD ASSEMBLY SALES DRAWING				
		CHECKED BY & DATE		APPROVED BY & DATE		MATERIAL NO. SD-74680-095		DRAWING NO. SD-74680-095		SHEET NO. 1 OF 1
		APPROVED BY & DATE		CAD FILENAME		MATERIAL NO. SD-74680-095		DRAWING NO. SD-74680-095		SIZE D
DRAFT WHERE APPLICABLE MUST REMAIN WITHIN DIMENSIONS		THIS DRAWING CONTAINS INFORMATION THAT IS PROPRIETARY TO MOLEX INCORPORATED AND SHOULD NOT BE USED WITHOUT WRITTEN PERMISSION.								