

## GABRIELLA-MIDI-S

~10° spot beam with holder and installation tape

### SPECIFICATION:

Dimensions	Ø 37.8 mm
Height	24.1 mm
Fastening	tape, pin
ROHS compliant	yes ⓘ

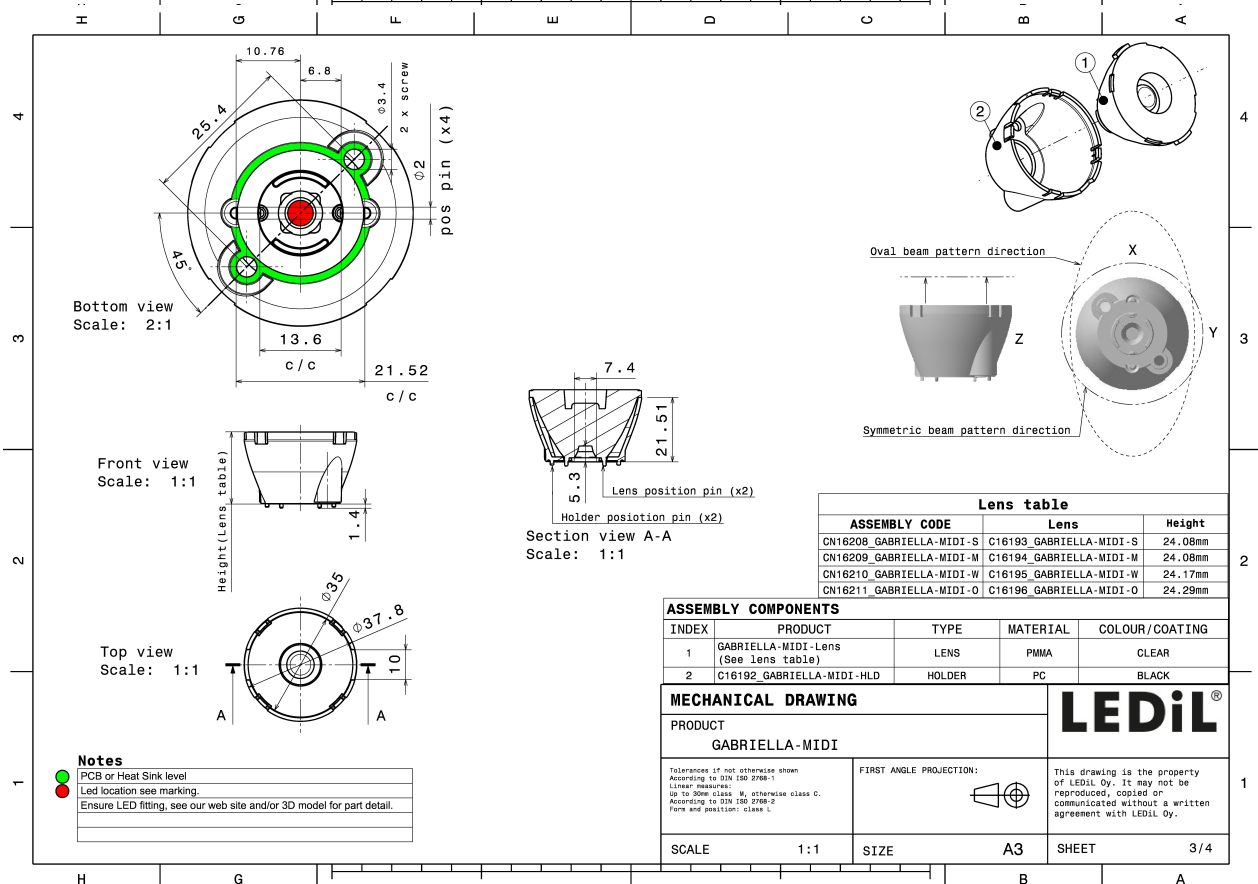
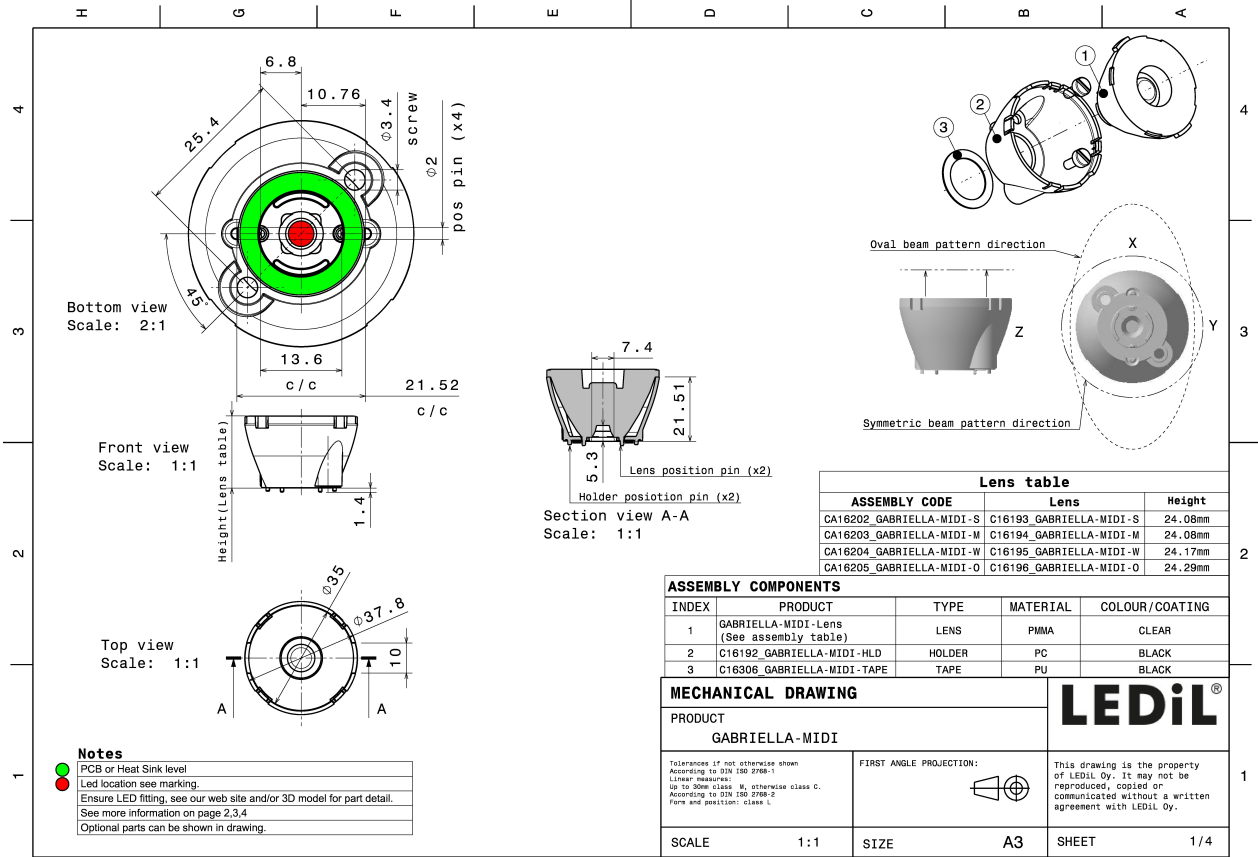
### MATERIALS:

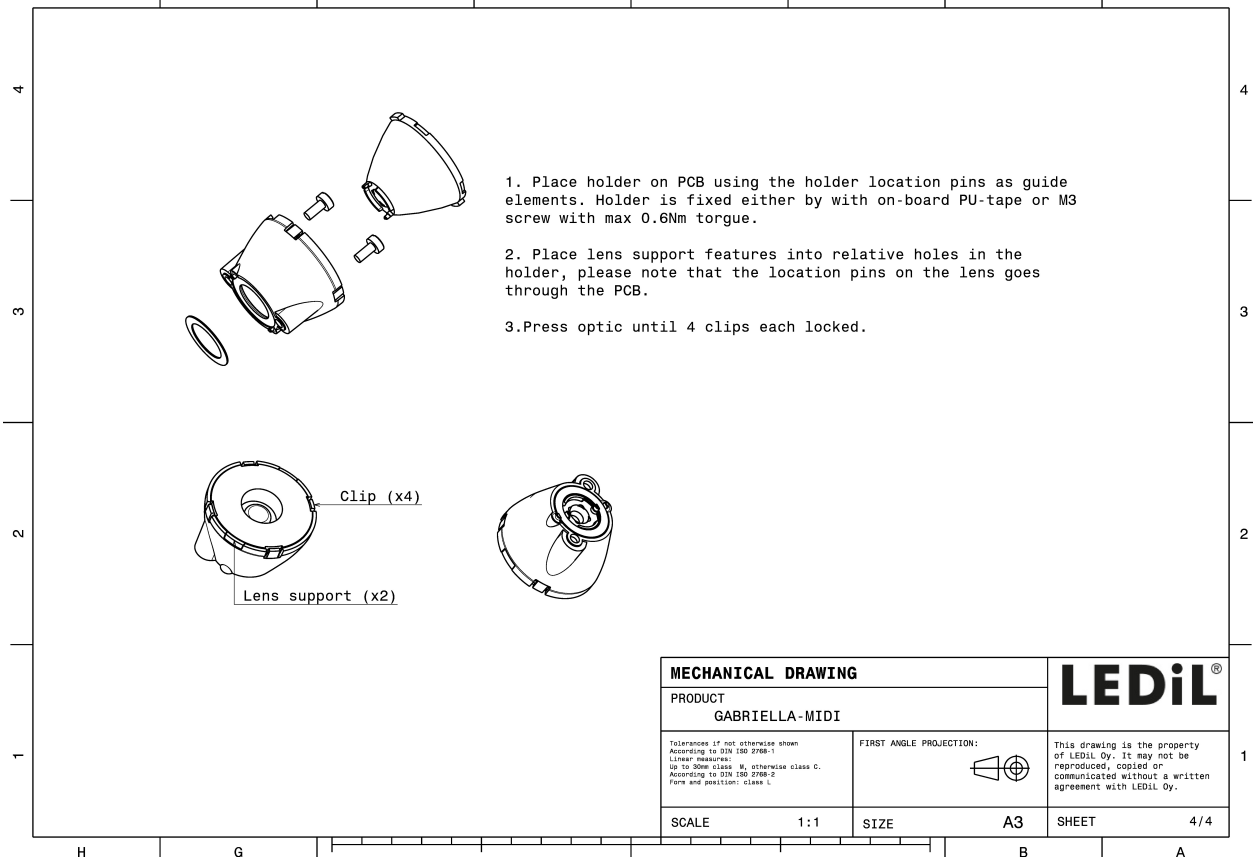
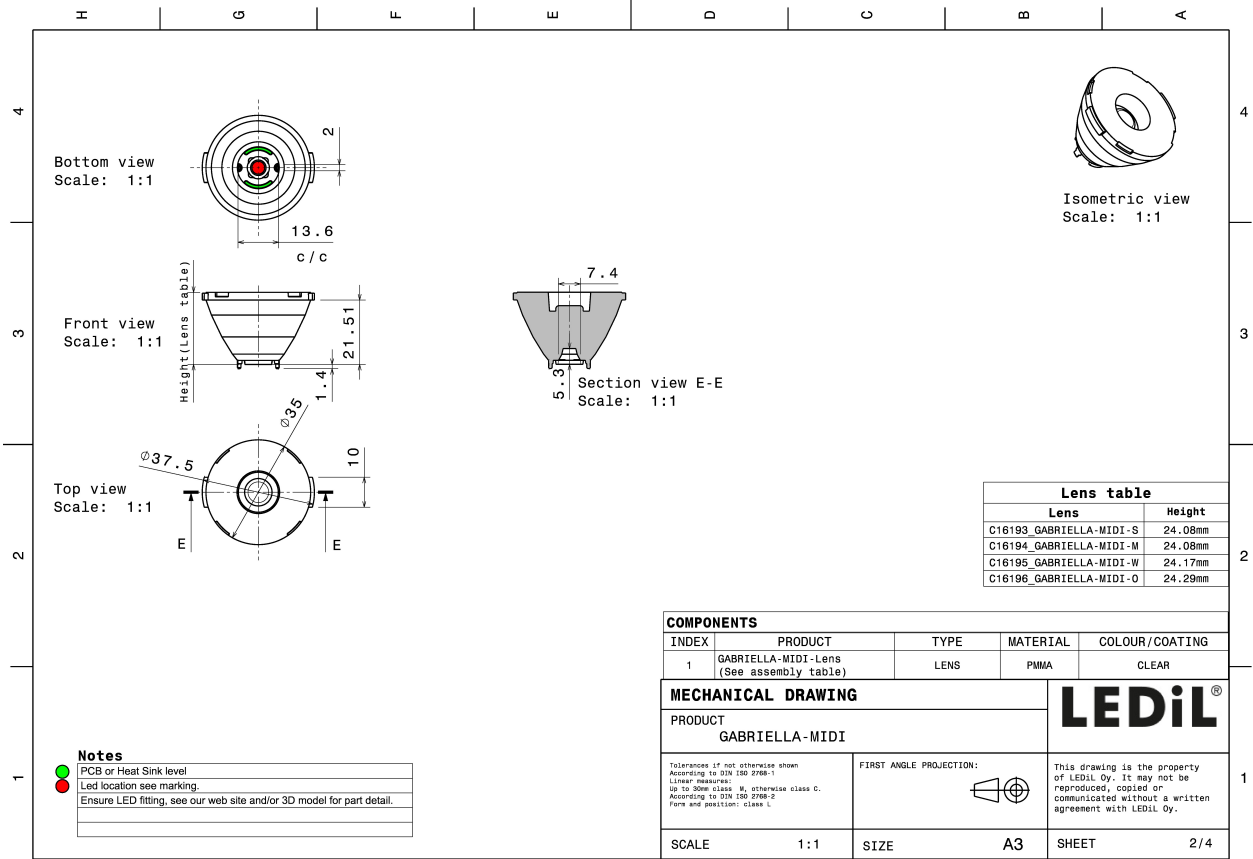
Component	Type	Material	Colour	Finish
GABRIELLA-MIDI-S	Single lens	PMMA	clear	
GABRIELLA-MIDI-HLD	Holder	PC	black	
GABRIELLA-MIDI-TAPE	Tape	Acrylic foam	black	



### ORDERING INFORMATION:

Component	Type	Qty in box	MOQ	MPQ	Box weight (kg)
CA16202_GABRIELLA-MIDI-S	Single lens	500	100	50	11.7
» Box size: 476 x 273 x 292 mm					



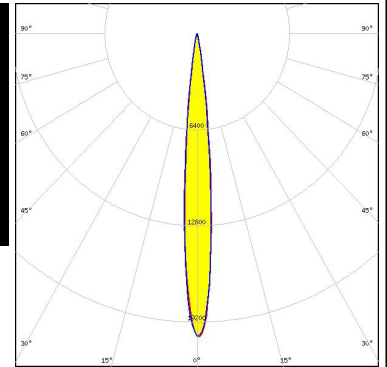
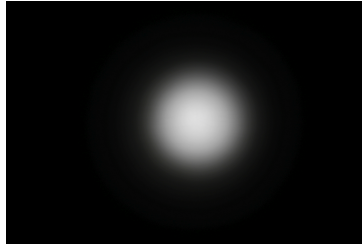


See also our general installation guide: [www.ledil.com/installation\\_guide](http://www.ledil.com/installation_guide)

#### OPTICAL RESULTS (MEASURED):

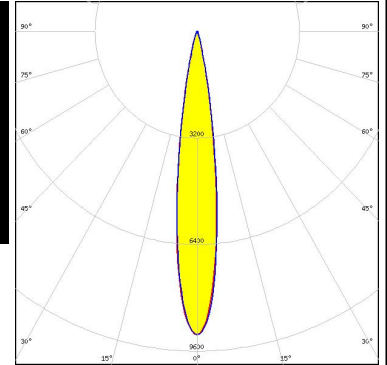
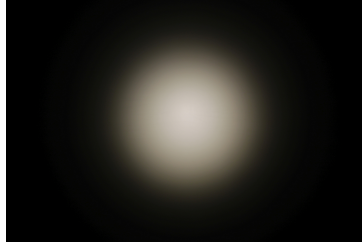
##### CREE LED

LED XHP35 HI  
 FWHM / FWTM 10.0° / 19.0°  
 Efficiency 90 %  
 Peak intensity 20.4 cd/lm  
 LEDs/each optic 1  
 Light colour White  
 Required components:



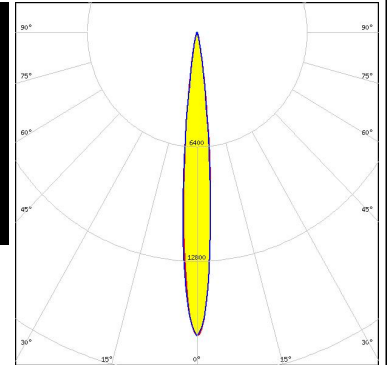
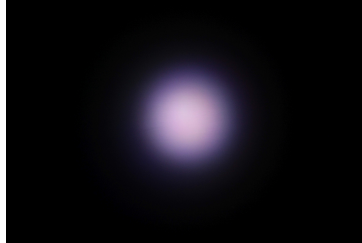
##### CREE LED

LED XHP50.2  
 FWHM / FWTM 15.0° / 28.0°  
 Efficiency 87 %  
 Peak intensity 9.1 cd/lm  
 LEDs/each optic 1  
 Light colour White  
 Required components:



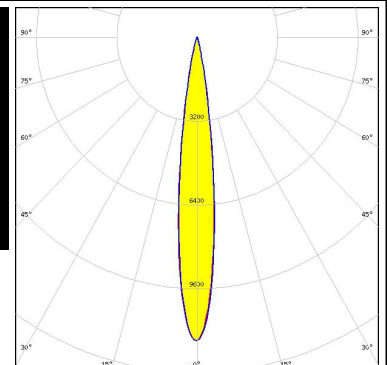
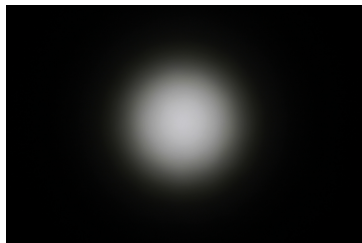
##### CREE LED

LED XM-L RGBW (XMLDCL HI)  
 FWHM / FWTM 11.0° / 20.0°  
 Efficiency 89 %  
 Peak intensity 17 cd/lm  
 LEDs/each optic 1  
 Light colour RGBW  
 Required components:



##### LUMILEDS

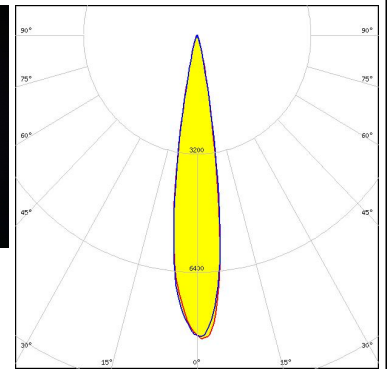
LED LUXEON 5050 Round LES  
 FWHM / FWTM 14.0° / 26.0°  
 Efficiency 91 %  
 Peak intensity 12.6 cd/lm  
 LEDs/each optic 1  
 Light colour White  
 Required components:



#### OPTICAL RESULTS (MEASURED):

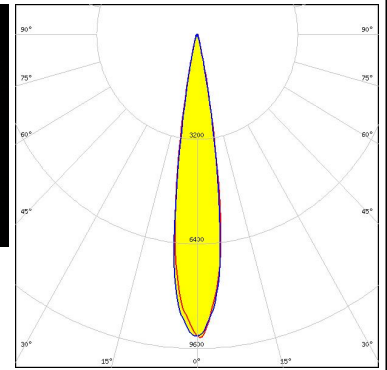
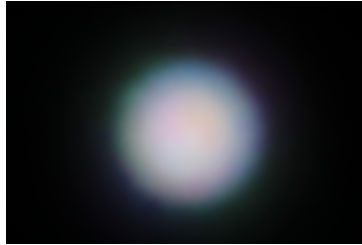
##### LUMILEDS

LED LUXEON C  
 FWHM / FWTM 17.0° / 28.0°  
 Efficiency 85 %  
 Peak intensity 8.2 cd/lm  
 LEDs/each optic 1  
 Light colour RGBW  
 Required components:



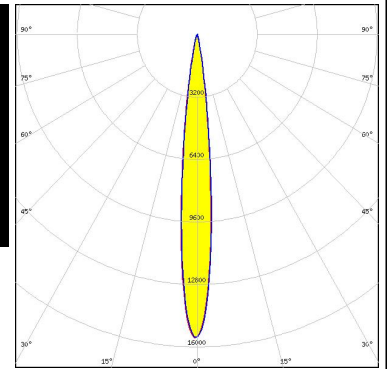
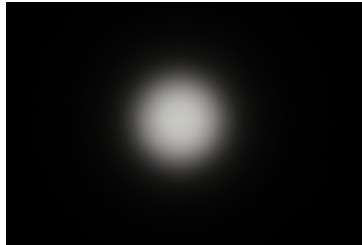
##### LUMILEDS

LED LUXEON CZ  
 FWHM / FWTM 16.0° / 26.0°  
 Efficiency 89 %  
 Peak intensity 9.3 cd/lm  
 LEDs/each optic 4  
 Light colour RGBW  
 Required components:



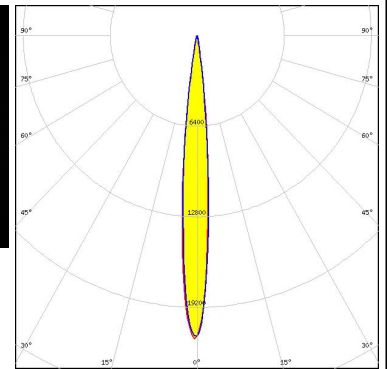
##### LUMILEDS

LED LUXEON V  
 FWHM / FWTM 11.0° / 22.0°  
 Efficiency 89 %  
 Peak intensity 15.5 cd/lm  
 LEDs/each optic 1  
 Light colour White  
 Required components:



##### LUMINUS

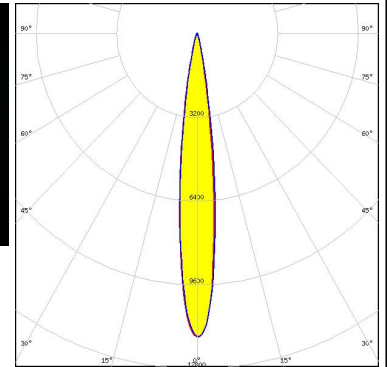
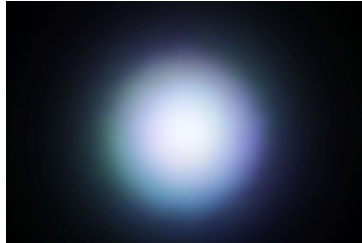
LED SBM-40-RGBW  
 FWHM / FWTM 10.0° / 19.0°  
 Efficiency 89 %  
 Peak intensity 21.5 cd/lm  
 LEDs/each optic 1  
 Light colour White  
 Required components:



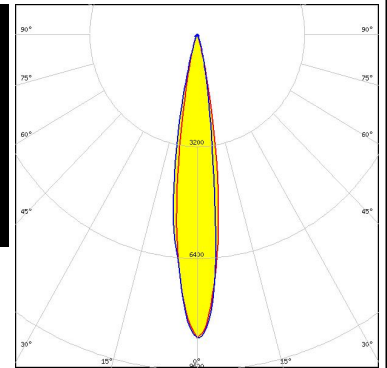
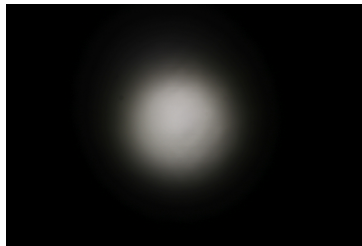
#### OPTICAL RESULTS (MEASURED):



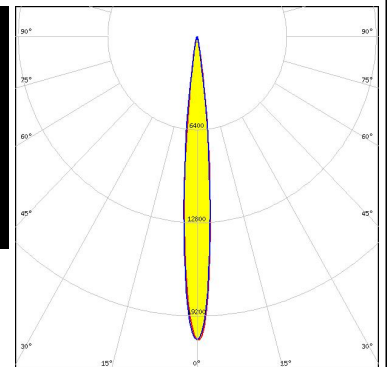
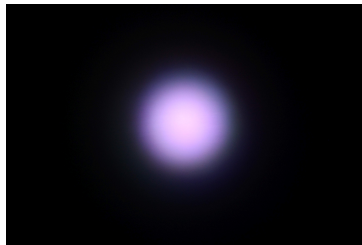
LED NCSxE17A  
 FWHM / FWTM 13.0° / 26.0°  
 Efficiency 92 %  
 Peak intensity 11.6 cd/lm  
 LEDs/each optic 4  
 Light colour RGBW  
 Required components:



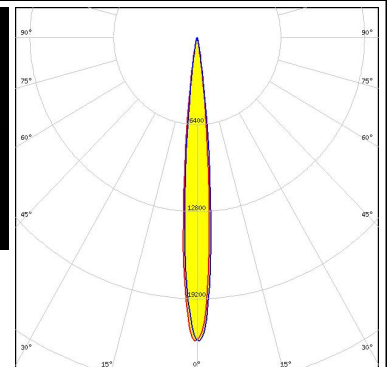
LED NVSW219F  
 FWHM / FWTM 16.0° / 29.0°  
 Efficiency 89 %  
 Peak intensity 8.7 cd/lm  
 LEDs/each optic 1  
 Light colour White  
 Required components:





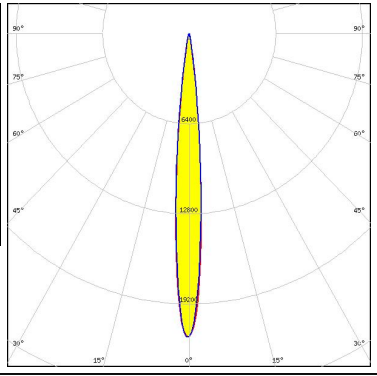


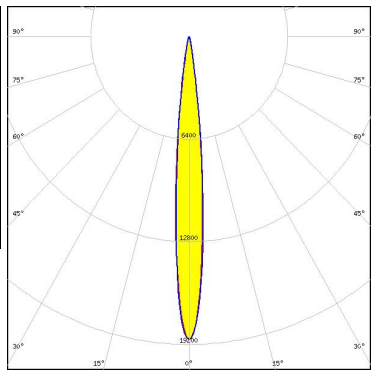


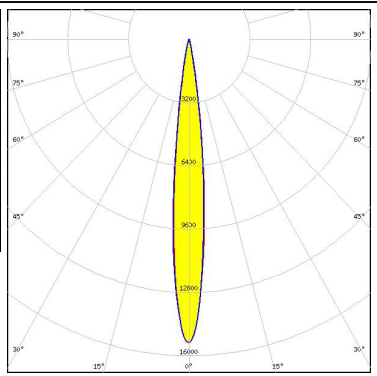
LED OSTAR Stage (S2WN)  
 FWHM / FWTM 10.0° / 19.0°  
 Efficiency 90 %  
 Peak intensity 20.8 cd/lm  
 LEDs/each optic 1  
 Light colour RGBW  
 Required components:



LED OSTAR Stage (S2WP)  
 FWHM / FWTM 10.0° / 18.0°  
 Efficiency 91 %  
 Peak intensity 22 cd/lm  
 LEDs/each optic 1  
 Light colour White  
 Required components:



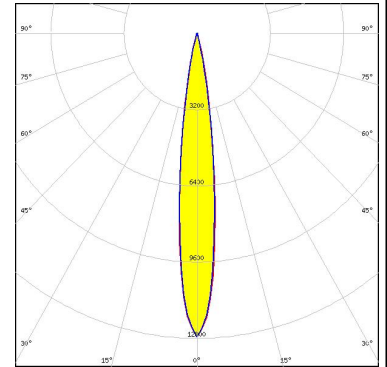
#### OPTICAL RESULTS (MEASURED):

<p> SEUL SEMICONDUCTOR</p> <p>LED                    SPF05F0A</p> <p>FWHM / FWTM      10.0° / 19.0°</p> <p>Efficiency            89 %</p> <p>Peak intensity      21.6 cd/lm</p> <p>LEDs/each optic    1</p> <p>Light colour        RGBW</p> <p>Required components:</p>		
<p> SEUL SEMICONDUCTOR</p> <p>LED                    SPF05F0B</p> <p>FWHM / FWTM      11.0° / 20.0°</p> <p>Efficiency            90 %</p> <p>Peak intensity      18.9 cd/lm</p> <p>LEDs/each optic    1</p> <p>Light colour        RGBW</p> <p>Required components:</p>		
<p> SEUL SEMICONDUCTOR</p> <p>LED                    SPF05F0C</p> <p>FWHM / FWTM      12.0° / 22.0°</p> <p>Efficiency            89 %</p> <p>Peak intensity      15.4 cd/lm</p> <p>LEDs/each optic    1</p> <p>Light colour        RGBW</p> <p>Required components:</p>		

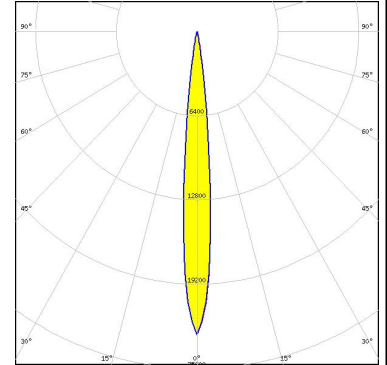
#### OPTICAL RESULTS (SIMULATED):



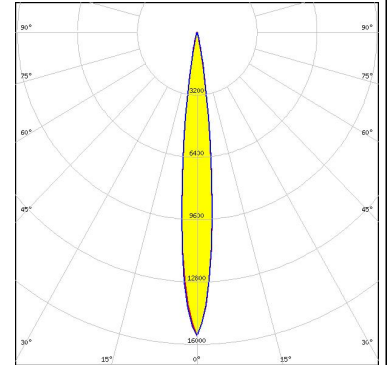
LED CLQ6A-TKW  
 FWHM / FWTM 13.7° / 26.1°  
 Efficiency 94 %  
 Peak intensity 12.7 cd/lm  
 LEDs/each optic 1  
 Light colour RGBW  
 Required components:



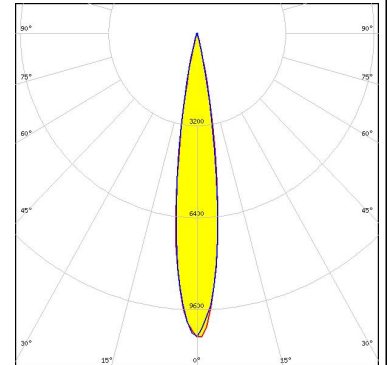
LED XE-G  
 FWHM / FWTM 10.0° / 18.0°  
 Efficiency 92 %  
 Peak intensity 23.1 cd/lm  
 LEDs/each optic 1  
 Light colour White  
 Required components:



LED XHP35.2 HD  
 FWHM / FWTM 12.0° / 22.0°  
 Efficiency 88 %  
 Peak intensity 15.6 cd/lm  
 LEDs/each optic 1  
 Light colour White  
 Required components:

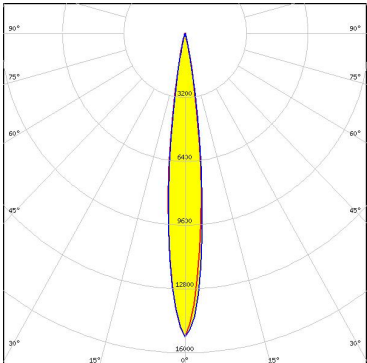
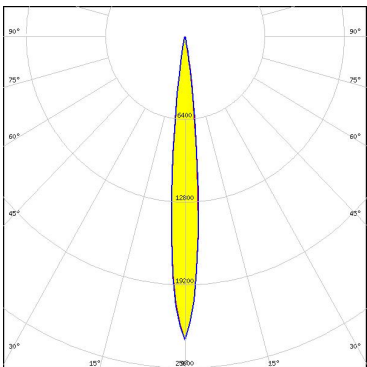
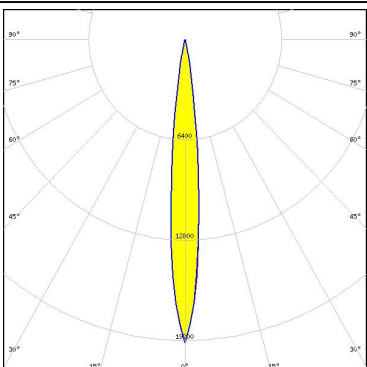
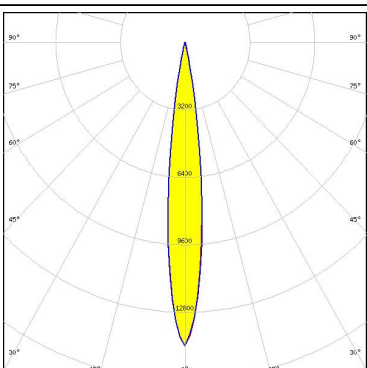


LED XHP50  
 FWHM / FWTM 16.0° / 27.0°  
 Efficiency 91 %  
 Peak intensity 10.7 cd/lm  
 LEDs/each optic 1  
 Light colour White  
 Required components:





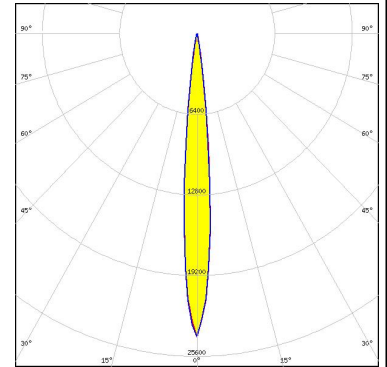
#### OPTICAL RESULTS (SIMULATED):

<p><b>CREE LED</b></p> <p>LED XM-L RGBW (XMLCTW)            FWHM / FWTM 13.0° / 23.0°            Efficiency 93 %            Peak intensity 15.2 cd/lm            LEDs/each optic 1            Light colour RGBW            Required components:</p>	
<p><b>CREE LED</b></p> <p>LED XP-E2            FWHM / FWTM 10.0° / 19.0°            Efficiency 92 %            Peak intensity 23.5 cd/lm            LEDs/each optic 1            Light colour Amber            Required components:</p>	
<p><b>CREE LED</b></p> <p>LED XP-G2 HE            FWHM / FWTM 11.0° / 22.0°            Efficiency 92 %            Peak intensity 19.4 cd/lm            LEDs/each optic 1            Light colour White            Required components:</p>	
<p><b>CREE LED</b></p> <p>LED XQ-E HI            FWHM / FWTM 14.0° / 24.0°            Efficiency 90 %            Peak intensity 14.4 cd/lm            LEDs/each optic 4            Light colour RGBW            Required components:</p>	

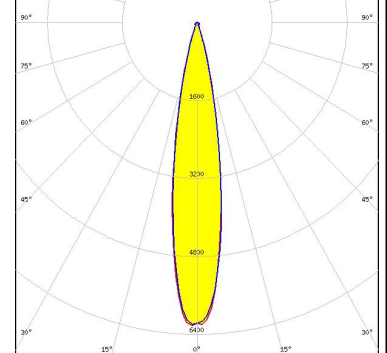
#### OPTICAL RESULTS (SIMULATED):



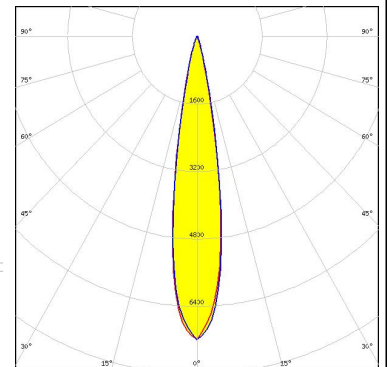
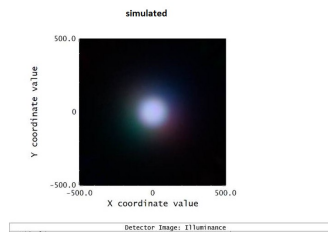
LED XT-E  
 FWHM / FWTM 10.0° / 19.0°  
 Efficiency 91 %  
 Peak intensity 24.1 cd/lm  
 LEDs/each optic 1  
 Light colour White  
 Required components:



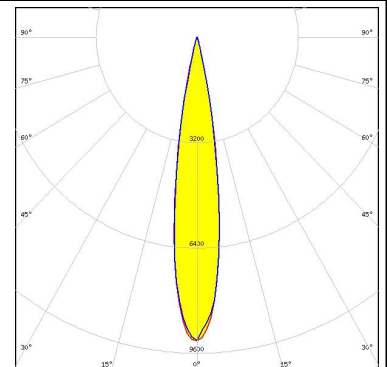
LED LUXEON 7070  
 FWHM / FWTM 18.0° / 34.0°  
 Efficiency 90 %  
 Peak intensity 6.3 cd/lm  
 LEDs/each optic 1  
 Light colour White  
 Required components:



LED LUXEON C  
 FWHM / FWTM 18.0 + °  
 Efficiency 86 %  
 Peak intensity 7.2 cd/lm  
 LEDs/each optic 4  
 Light colour RGBW  
 Required components:



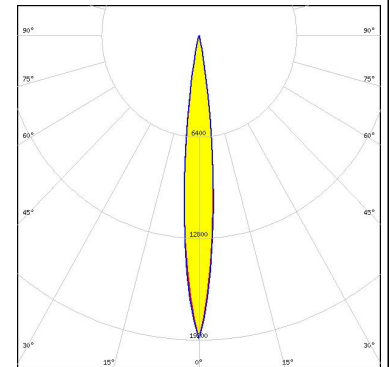
LED LUXEON M/MX  
 FWHM / FWTM 17.0° / 28.0°  
 Efficiency 91 %  
 Peak intensity 9.3 cd/lm  
 LEDs/each optic 1  
 Light colour White  
 Required components:



#### OPTICAL RESULTS (SIMULATED):

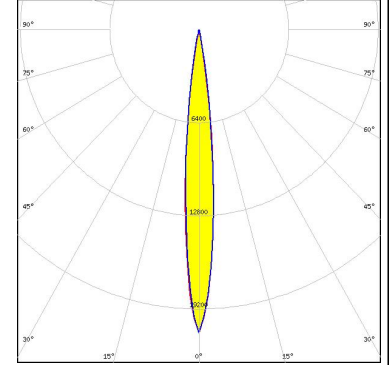
##### LUMILEDS

LED LUXEON Rubix  
 FWHM / FWTM 12.0° / 21.0°  
 Efficiency 92 %  
 Peak intensity 19.1 cd/lm  
 LEDs/each optic 4  
 Light colour RGBW  
 Required components:



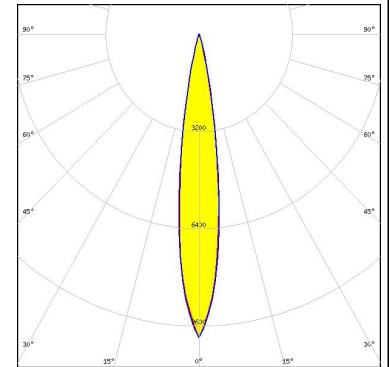
##### LUMILEDS

LED LUXEON Z  
 FWHM / FWTM 11.0° / 20.0°  
 Efficiency 91 %  
 Peak intensity 21 cd/lm  
 LEDs/each optic 4  
 Light colour RGBW  
 Required components:



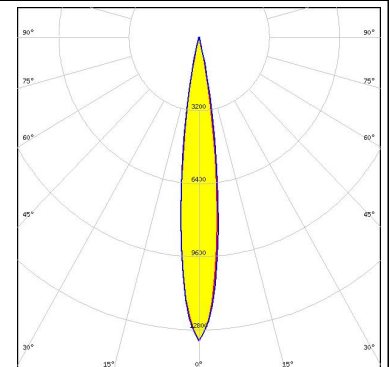
##### NICHIA

LED NV4x144A  
 FWHM / FWTM 16.0° / 28.0°  
 Efficiency 89 %  
 Peak intensity 10 cd/lm  
 LEDs/each optic 1  
 Light colour White  
 Required components:



##### OSRAM

Opto Semiconductors  
 LED DURIS E 5050 (GW J9LHS1.4M)  
 FWHM / FWTM 14.0° / 24.0 + 26.0°  
 Efficiency 93 %  
 Peak intensity 13.3 cd/lm  
 LEDs/each optic 1  
 Light colour RGBW  
 Required components:

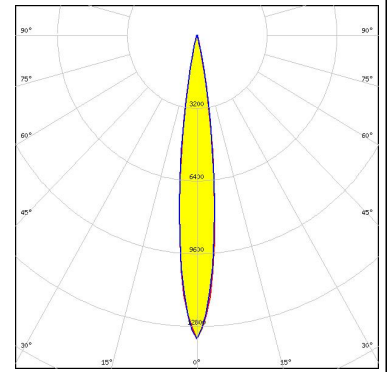


#### OPTICAL RESULTS (SIMULATED):

##### OSRAM

Opto Semiconductors

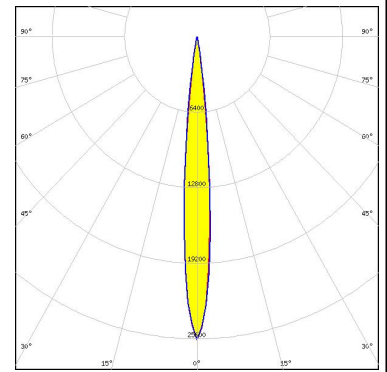
LED Duris S8  
 FWHM / FWTM 14.0° / 25.0°  
 Efficiency 92 %  
 Peak intensity 13.5 cd/lm  
 LEDs/each optic 1  
 Light colour White  
 Required components:



##### OSRAM

Opto Semiconductors

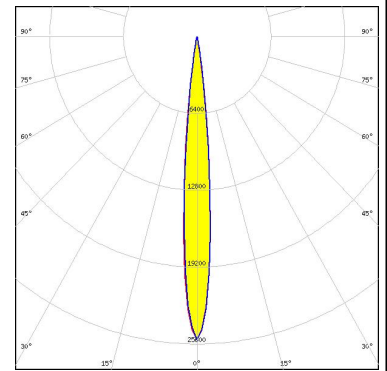
LED OSCONIQ P 3737 (2W version)  
 FWHM / FWTM 10.0° / 19.0°  
 Efficiency 94 %  
 Peak intensity 25.7 cd/lm  
 LEDs/each optic 1  
 Light colour White  
 Required components:



##### OSRAM

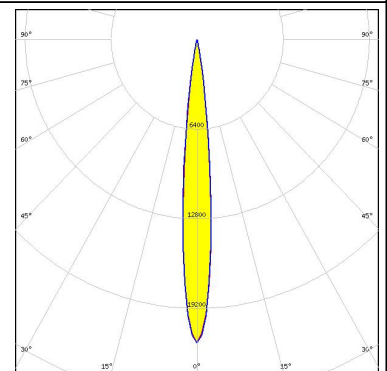
Opto Semiconductors

LED OSLON Square CSSRM2/CSSRM3  
 FWHM / FWTM 10.0° / 19.0°  
 Efficiency 93 %  
 Peak intensity 25.3 cd/lm  
 LEDs/each optic 1  
 Light colour White  
 Required components:



##### SAMSUNG

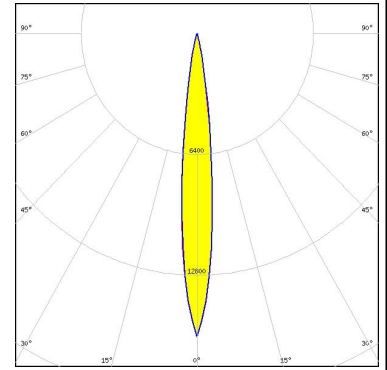
LED LH351B  
 FWHM / FWTM 11.0° / 20.0°  
 Efficiency 93 %  
 Peak intensity 21.7 cd/lm  
 LEDs/each optic 1  
 Light colour White  
 Required components:



#### OPTICAL RESULTS (SIMULATED):

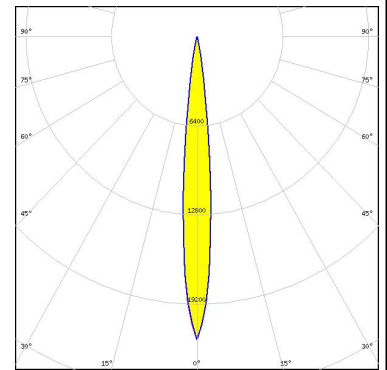
### SAMSUNG

LED LH351D  
 FWHM / FWTM 12.0° / 24.0°  
 Efficiency 92 %  
 Peak intensity 16.1 cd/lm  
 LEDs/each optic 1  
 Light colour White  
 Required components:



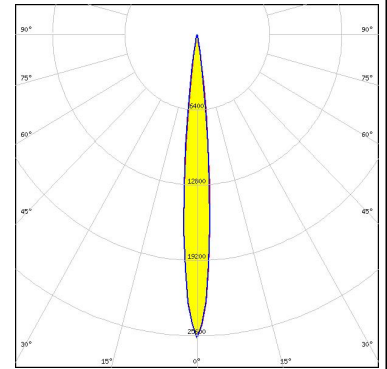
### SAMSUNG

LED LM28xB Series  
 FWHM / FWTM 10.0° / 20.0°  
 Efficiency 93 %  
 Peak intensity 21.8 cd/lm  
 LEDs/each optic 1  
 Light colour White  
 Required components:



SEOUL SEMICONDUCTOR

LED Z5M1/Z5M2  
 FWHM / FWTM 10.0° / 19.0°  
 Efficiency 93 %  
 Peak intensity 25.8 cd/lm  
 LEDs/each optic 1  
 Light colour White  
 Required components:



### GENERAL INFORMATION:

NOTE: The typical beam angle will be changed by different color, chip size and chip position tolerance. The typical total beam angle is the full angle measured where the luminous intensity is half of the peak value.

### MATERIALS:

As part of our continuous research and improvement processes, and to ensure the best possible quality and availability of our products, LEDiL reserves the right to change material grades without notice.

### PRODUCT DATA USER AGREEMENT AND DISCLAIMER:

The measured data in the provided downloadable LEDiL Product Datasheets and Mechanical 2D-Drawings is rounded and provided as reference for planning. LEDiL Oy's optical specifications have been verified by conducting performance testing of the products in accordance with the company's quality system. The reported data are averaged results of multiple measurements with typical variation. LEDiL Oy reserves the right to without prior notification make changes and improvements to its products.

LEDiL Oy assumes neither warranty, nor guarantee nor any other liability of any kind for the contents and correctness of the provided data. The provided data has been generated with highest diligence but the provided data may in reality not represent the complete possible variation range of all intrinsic parameters. Therefore, in certain cases a deviation from the provided data could occur.

LEDiL Oy reserves the right to undertake technical changes of its products without further notification which could lead to changes in the provided data. LEDiL Oy assumes no liability of any kind for the possible deviation from any provided data or any other damage resulting from the usage of the provided data.

The user agrees to this disclaimer and user agreement with the download or usage of the provided files.

#### LEDiL Oy

Joensuunkatu 13  
FI-24240 SALO  
Finland

#### LEDiL Inc.

228 West Page Street  
Suite D  
Sycamore IL 60178  
USA

#### Ledil Optics Technology (Shenzhen) Co., Ltd.

# 405 , Block B  
Casic Motor Building  
Shenzhen 518057  
P.R.CHINA

#### Local sales and technical support

[www.ledil.com/  
where\\_to\\_buy](http://www.ledil.com/where_to_buy)

#### Shipping locations

Salo, Finland  
Hong Kong, China

#### Distribution Partners

[www.ledil.com/  
where\\_to\\_buy](http://www.ledil.com/where_to_buy)