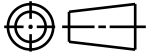
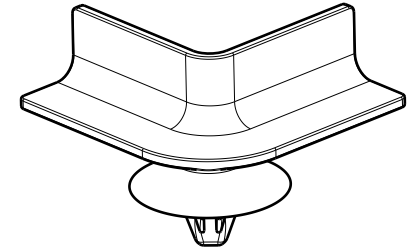


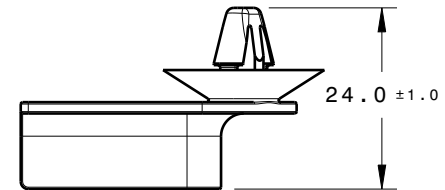
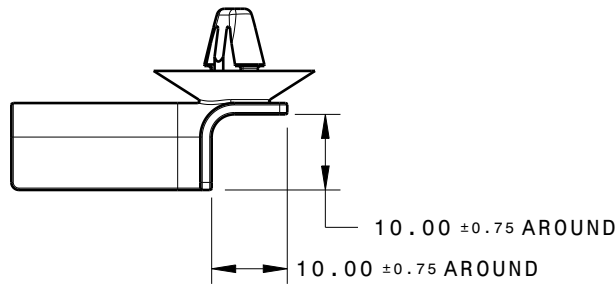
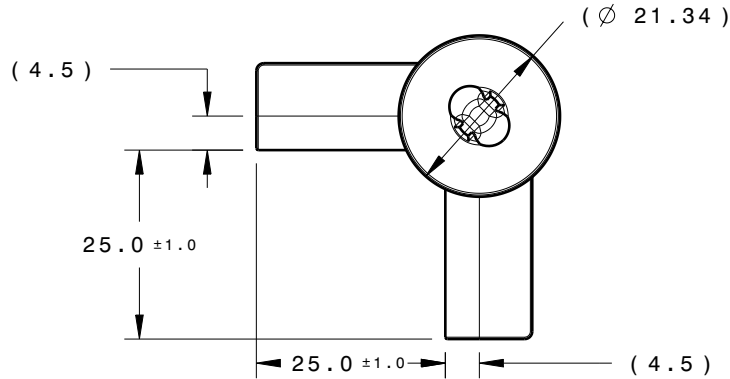
CATIA V5



Revision Level			Revision Record	Changed	Date	Approved	Date
Drawing	State	Part					
03.1	Design Release	-	SEE ECN# 015070	CTF	04/30/2019	EJH	04/30/2019



Isometric view



REFERENCE
 PERFORMANCE REQUIREMENTS AT DRY AS MOLDED:
 1. SHEET EMTAL THICKNESS RANGE: 0.5mm - 1.8mm
 2. HOLE SIZE RANGE: 6.2 - 6.8mm

Material PA66HIRHSUV COLOR: BLACK 	Units millimeters	The copyright of this drawing is reserved by HellermannTyton. It is issued on condition that it is not reproduced, copied or disclosed to a third party, either wholly or in part, without the consent of HellermannTyton.	Drawn SJA 03/30/11	Article/Type-No BC90AH	Scale 1:1		
	Tolerance defined on each dimension 		Approved KAC 03/30/11		Title 90 DEGREE BUNDLING CHANNEL WITH ARROW HEAD	Project Number 11-0335	
	North America Email: corp@htamericas.com Web: www.hellermann.tyton.com			Drawing-No 11-0335-001-CSU	PRODUCTION : Phase	Format AH	
				Sheet 1/1			