

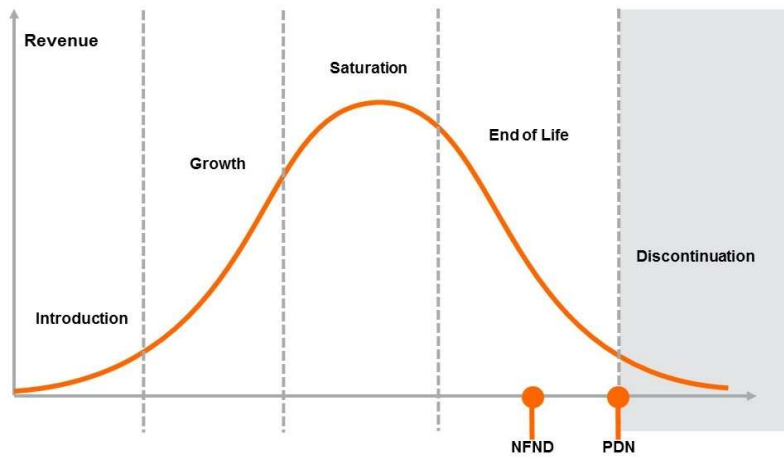
Product Or Individual Q-Code Discontinuation (acc. JEDEC J-STD-048)  
**OS-PDN-2020-074**

15 October 2020

---

|                |                 |
|----------------|-----------------|
| Last order:    | 15 January 2021 |
| Last delivery: | 15 April 2021   |

---



Please direct your feedback to your local Sales office.

| DISCONTINUED                     |               |       |  | NEW (REPLACEMENT)                |                         |       |
|----------------------------------|---------------|-------|--|----------------------------------|-------------------------|-------|
| Device                           | Ordering Code | Brand | Reason for discontinuation                                 | Device                           | Datasheet Ordering Code | Brand |
| GW CSSRM2.CM-M4M6-XX55-1-700-R18 | Q65112A0823   | OSLON | Brightness increase – dim selections need to be phased-out | GW CSSRM2.CM-M6M8-XX55-1-700-R18 | Q65113A2026             | OSLON |
| GW CSSRM2.CM-M4M6-A535-1-700-R18 | Q65112A0824   | OSLON | Brightness increase – dim selections need to be phased-out | GW CSSRM2.CM-M6M8-XX55-1-700-R18 | Q65113A2026             | OSLON |
| GW CSSRM2.CM-M1M3-XX58-1-700-R18 | Q65112A0827   | OSLON | Brightness increase – dim selections need to be phased-out | GW CSSRM2.CM-M3M5-XX58-1-700-R18 | Q65113A2019             | OSLON |
| GW CSSRM2.CM-M3M5-XX57-1-700-R18 | Q65112A0844   | OSLON | Brightness increase – dim selections need to be phased-out | GW CSSRM2.CM-M4M6-XX37-1-700-R18 | Q65113A2022             | OSLON |
| GW CSSRM2.CM-M5M7-XX55-1-700-R18 | Q65112A0845   | OSLON | Brightness increase – dim selections need to be phased-out | GW CSSRM2.CM-M6M8-XX55-1-700-R18 | Q65113A2026             | OSLON |
| GW CSSRM2.CM-M6M8-A232-1-700-R18 | Q65112A0846   | OSLON | Brightness increase – dim selections need to be phased-out | GW CSSRM2.CM-M7M9-XX52-1-700-R18 | Q65113A2030             | OSLON |
| GW CSSRM2.CM-M6M8-XX52-1-700-R18 | Q65112A0848   | OSLON | Brightness increase – dim selections need to be phased-out | GW CSSRM2.CM-M7M9-XX52-1-700-R18 | Q65113A2030             | OSLON |
| GW CSSRM2.CM-M6M8-A131-1-700-R18 | Q65112A0850   | OSLON | Brightness increase – dim selections need to be phased-out | GW CSSRM2.CM-M7M9-XX51-1-700-R18 | Q65113A2031             | OSLON |
| GW CSSRM2.CM-M6M8-XX51-1-700-R18 | Q65112A0851   | OSLON | Brightness increase – dim selections need to be phased-out | GW CSSRM2.CM-M7M9-XX51-1-700-R18 | Q65113A2031             | OSLON |
| GW CSSRM2.CM-M2M4-XX58-1-700-R18 | Q65112A0853   | OSLON | Brightness increase – dim selections need to be phased-out | GW CSSRM2.CM-M3M5-XX58-1-700-R18 | Q65113A2019             | OSLON |
| GW CSSRM2.CM-M4M6-A636-1-700-R18 | Q65112A0854   | OSLON | Brightness increase – dim selections need to be phased-out | GW CSSRM2.CM-M5M7-XX56-1-700-R18 | Q65113A2023             | OSLON |
| GW CSSRM2.CM-M5M7-A535-1-700-R18 | Q65112A0855   | OSLON | Brightness increase – dim selections need to be phased-out | GW CSSRM2.CM-M6M8-XX55-1-700-R18 | Q65113A2026             | OSLON |
| GW CSSRM2.CM-M3M5-A737-1-700-R18 | Q65112A0857   | OSLON | Brightness increase – dim selections need to be phased-out | GW CSSRM2.CM-M4M6-XX57-1-700-R18 | Q65113A2021             | OSLON |
| GW CSSRM2.CM-M2M4-A838-1-700-R18 | Q65112A0858   | OSLON | Brightness increase – dim selections need to be phased-out | GW CSSRM2.CM-M3M5-XX58-1-700-R18 | Q65113A2019             | OSLON |
| GW CSSRM2.CM-M4M6-XX56-1-700-R18 | Q65112A0966   | OSLON | Brightness increase – dim selections need to be phased-out | GW CSSRM2.CM-M5M7-XX36-1-700-R18 | Q65113A2024             | OSLON |
| GW CSSRM2.CM-M6M8-XX53-1-700-R18 | Q65112A1649   | OSLON | Brightness increase – dim selections need to be phased-out | GW CSSRM2.CM-M6M8-XX55-1-700-R18 | Q65113A2026             | OSLON |
| GW CSSRM2.CM-M5M7-XX53-1-700-R18 | Q65112A1650   | OSLON | Brightness increase – dim selections need to be phased-out | GW CSSRM2.CM-M6M8-XX55-1-700-R18 | Q65113A2026             | OSLON |
| GW CSSRM2.CM-M6M8-A333-1-700-R18 | Q65112A1651   | OSLON | Brightness increase – dim selections need to be phased-out | GW CSSRM2.CM-M6M8-XX55-1-700-R18 | Q65113A2026             | OSLON |
| GW CSSRM2.CM-M5M7-A333-1-700-R18 | Q65112A1652   | OSLON | Brightness increase – dim selections need to be phased-out | GW CSSRM2.CM-M6M8-XX55-1-700-R18 | Q65113A2026             | OSLON |

## *Products Affected by Product Discontinuation Notification*

**Number:** OS-PDN-2020-074

**Name:** Product Discontinuation of Dim Selections

**Release Date:** 10/15/2020

**Last Order:** 1/15/2021

**Last Delivery:** 4/15/2021

### *DISCONTINUED*

### *NEW (REPLACEMENT)*

| <i>Product</i> | <i>QNumber</i> | <i>QNumber Description</i>       | <i>Part Number</i>        | <i>Product</i> | <i>QNumber</i> | <i>QNumber Description</i>       | <i>Part Number</i> |
|----------------|----------------|----------------------------------|---------------------------|----------------|----------------|----------------------------------|--------------------|
| GW CSSRM       | Q65112A0823    | GW CSSRM2.CM-M4M6-XX55-1-700-R18 | GW CSSRM2.CM- M4M6-XX55-1 | GW CSSRM       | Q65113A2026    | GW CSSRM2.CM-M6M8-XX55-1-700-R18 |                    |
| GW CSSRM       | Q65112A0824    | GW CSSRM2.CM-M4M6-A535-1-700-R18 | GW CSSRM2.CM-M4M6-A535-1  | GW CSSRM       | Q65113A2026    | GW CSSRM2.CM-M6M8-XX55-1-700-R18 |                    |
| GW CSSRM       | Q65112A0827    | GW CSSRM2.CM-M1M3-XX58-1-700-R18 | GW CSSRM2.CM-M1M3-XX58-1  | GW CSSRM       | Q65113A2019    | GW CSSRM2.CM-M3M5-XX58-1-700-R18 |                    |
| GW CSSRM       | Q65112A0844    | GW CSSRM2.CM-M3M5-XX57-1-700-R18 | GW CSSRM2.CM-M3M5-XX57-1  | GW CSSRM       | Q65113A2022    | GW CSSRM2.CM-M4M6-XX37-1-700-R18 |                    |
| GW CSSRM       | Q65112A0845    | GW CSSRM2.CM-M5M7-XX55-1-700-R18 | GW CSSRM2.CM-M5M7-XX55-1  | GW CSSRM       | Q65113A2026    | GW CSSRM2.CM-M6M8-XX55-1-700-R18 |                    |
| GW CSSRM       | Q65112A0846    | GW CSSRM2.CM-M6M8-A232-1-700-R18 | GW CSSRM2.CM-M6M8-A232-1  | GW CSSRM       | Q65113A2030    | GW CSSRM2.CM-M7M9-XX52-1-700-R18 |                    |
| GW CSSRM       | Q65112A0848    | GW CSSRM2.CM-M6M8-XX52-1-700-R18 | GW CSSRM2.CM-M6M8-XX52-1  | GW CSSRM       | Q65113A2030    | GW CSSRM2.CM-M7M9-XX52-1-700-R18 |                    |
| GW CSSRM       | Q65112A0850    | GW CSSRM2.CM-M6M8-A131-1-700-R18 | GW CSSRM2.CM-M6M8-A131-1  | GW CSSRM       | Q65113A2031    | GW CSSRM2.CM-M7M9-XX51-1-700-R18 |                    |
| GW CSSRM       | Q65112A0851    | GW CSSRM2.CM-M6M8-XX51-1-700-R18 | GW CSSRM2.CM-M6M8-XX51-1  | GW CSSRM       | Q65113A2031    | GW CSSRM2.CM-M7M9-XX51-1-700-R18 |                    |
| GW CSSRM       | Q65112A0853    | GW CSSRM2.CM-M2M4-XX58-1-700-R18 | GW CSSRM2.CM-M2M4-XX58-1  | GW CSSRM       | Q65113A2019    | GW CSSRM2.CM-M3M5-XX58-1-700-R18 |                    |
| GW CSSRM       | Q65112A0854    | GW CSSRM2.CM-M4M6-A636-1-700-R18 | GW CSSRM2.CM-M4M6-A636-1  | GW CSSRM       | Q65113A2023    | GW CSSRM2.CM-M5M7-XX56-1-700-R18 |                    |
| GW CSSRM       | Q65112A0855    | GW CSSRM2.CM-M5M7-A535-1-700-R18 | GW CSSRM2.CM-M5M7-A535-1  | GW CSSRM       | Q65113A2026    | GW CSSRM2.CM-M6M8-XX55-1-700-R18 |                    |
| GW CSSRM       | Q65112A0857    | GW CSSRM2.CM-M3M5-A737-1-700-R18 | GW CSSRM2.CM-M3M5-A737-1  | GW CSSRM       | Q65113A2021    | GW CSSRM2.CM-M4M6-XX57-1-700-R18 |                    |
| GW CSSRM       | Q65112A0858    | GW CSSRM2.CM-M2M4-A838-1-700-R18 | GW CSSRM2.CM-M2M4-A838-1  | GW CSSRM       | Q65113A2019    | GW CSSRM2.CM-M3M5-XX58-1-700-R18 |                    |
| GW CSSRM       | Q65112A0966    | GW CSSRM2.CM-M4M6-XX56-1-700-R18 | GW CSSRM2.CM-M4M6-XX56-1  | GW CSSRM       | Q65113A2024    | GW CSSRM2.CM-M5M7-XX36-1-700-R18 |                    |
| GW CSSRM       | Q65112A1649    | GW CSSRM2.CM-M6M8-XX53-1-700-R18 | GW CSSRM2.CM-M6M8-XX53    | GW CSSRM       | Q65113A2026    | GW CSSRM2.CM-M6M8-XX55-1-700-R18 |                    |
| GW CSSRM       | Q65112A1650    | GW CSSRM2.CM-M5M7-XX53-1-700-R18 | GW CSSRM2.CM-M5M7-XX53    | GW CSSRM       | Q65113A2026    | GW CSSRM2.CM-M6M8-XX55-1-700-R18 |                    |
| GW CSSRM       | Q65112A1651    | GW CSSRM2.CM-M6M8-A333-1-700-R18 | GW CSSRM2.CM-M6M8-A333    | GW CSSRM       | Q65113A2026    | GW CSSRM2.CM-M6M8-XX55-1-700-R18 |                    |
| GW CSSRM       | Q65112A1652    | GW CSSRM2.CM-M5M7-A333-1-700-R18 | GW CSSRM2.CM-M5M7-A333    | GW CSSRM       | Q65113A2026    | GW CSSRM2.CM-M6M8-XX55-1-700-R18 |                    |