

**NOTES:**

- (ø): FUNCTIONAL DIMENSIONS
- MATERIAL DEFINED ACCORDING TO THE REQUIRED PERFORMANCE AND FEASIBILITY RECCALL PERFORMANCE GENERALLY ACCEPTED WITH RESPECT TO THE CONNECTOR
- MATING FORCE CONNECTOR / ATTACHMENT = 50N MAX
- PULL OUT FORCE CONNECTOR / ATTACHMENT = 40N min

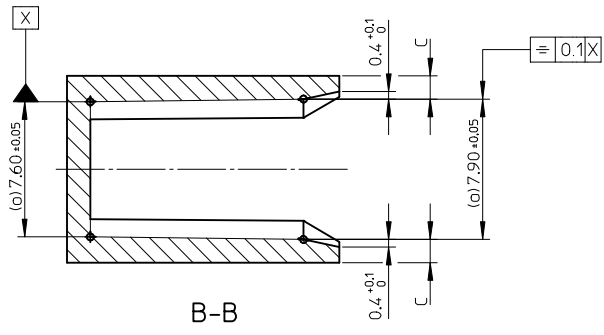
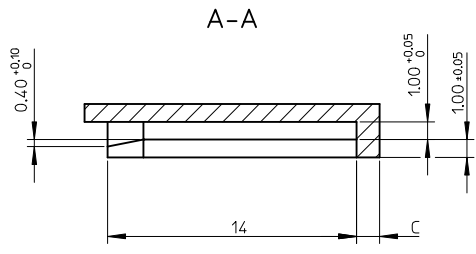
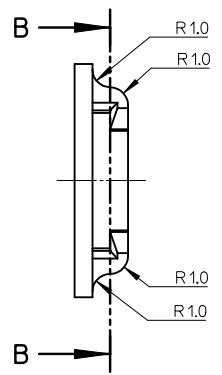
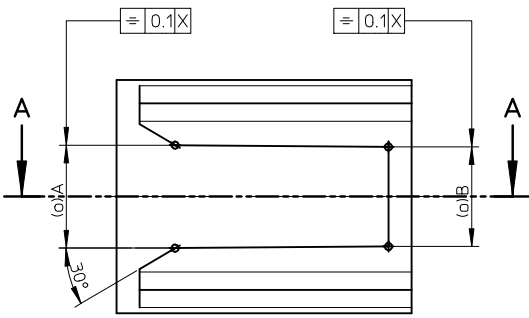
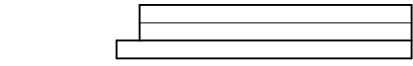
**MODIFICATIONS**

| REV. | DESCRIPTIONS  | NAME | DATE     |
|------|---------------|------|----------|
| B    | SEE SHEET 2/2 | VG   | 98/04/29 |
| C    | SEE SHEET 2/2 | PGR  | 13/09/04 |
|      |               |      |          |
|      |               |      |          |
|      |               |      |          |
|      |               |      |          |
|      |               |      |          |
|      |               |      |          |
|      |               |      |          |
|      |               |      |          |
|      |               |      |          |
|      |               |      |          |
|      |               |      |          |
|      |               |      |          |
|      |               |      |          |
|      |               |      |          |
|      |               |      |          |
|      |               |      |          |
|      |               |      |          |
|      |               |      |          |
|      |               |      |          |
|      |               |      |          |
|      |               |      |          |

|                        |                           |                            |                           |  |  |   |  |              |              |   |  |
|------------------------|---------------------------|----------------------------|---------------------------|--|--|---|--|--------------|--------------|---|--|
| <b>REDRAWN DRAWING</b> | EC NO: G2014-0038         | QUALITY SYMBOLS            |                           | GENERAL TOLERANCES (UNLESS SPECIFIED)                |  | DIMENSION STYLE   |  | SCALE        | DESIGN UNITS | FIRST ANGLE PROJECTION                      |  |
|                        | DRWN: PGRANDCL 2013/09/04 | CHKD: AHERBELIN 2013/09/04 | APPR: OPLESSIS 2013/09/12 | DRAWN BY DATE  |  | TITILE  |  | 5:1          | METRIC       | FIXING SYSTEM ON BODY CONNECTIQUE INTERFACE |  |
| MATERIAL NO.           |                           | APPROVED BY DATE           |                           | CHECKED BY DATE                                      |  | DOCUMENT NO.  |  |              |              |   |  |
| DESCRIPTION            |                           |                            |                           | ANGULAR ± 3 °  |  | NA  |  | SD-98969-004 |              | SHEET NO. 1 OF 2                            |  |
| REV. C                 |                           |                            |                           | DRAFT WHERE APPLICABLE MUST REMAIN WITHIN DIMENSIONS |  | THIS DRAWING CONTAINS INFORMATION THAT IS PROPRIETARY TO MOLEX INCORPORATED AND SHOULD NOT BE USED WITHOUT WRITTEN PERMISSION |  |              |              |   |  |

**MODIFICATIONS**

| REV. | DESCRIPTIONS   | NAME | DATE     |
|------|--|------|----------|
| A    | 12.5+0.15 WAS 12.5+0.65/-0.15 - ADDED ANGLE 30°<br>SECTION A-A: 0.4+0.1/0 WAS 0.4+0.05 - TO SUPPRESS 2<br>SECTION B-B: 0.4+0.1/0 WAS 0.4 | FP   | 98/02/26 |
| B    | CREATION SHEET 1/2<br>CREATION TAB WITH VARIANT PA 6.6 GF 20%<br>VARIANT ON PBT: TO SUPPRESS 5.6 +0.1/0                                  | VG   | 98/04/29 |
| C    | CATIA File Format redrawn on OSDM CADSystem for Molex<br>TO STEM FROM SPECIFICATION DRAWING N° 70  | PGR  | 13/09/04 |

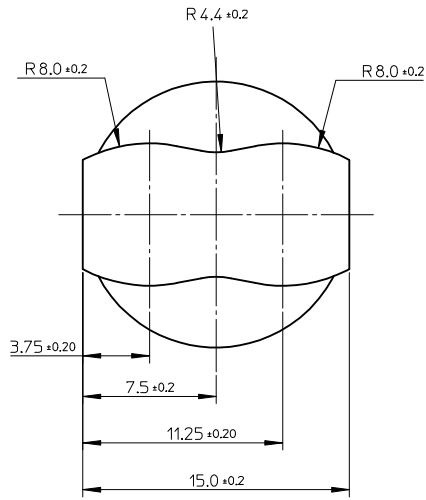
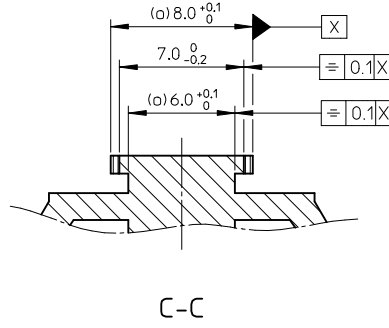
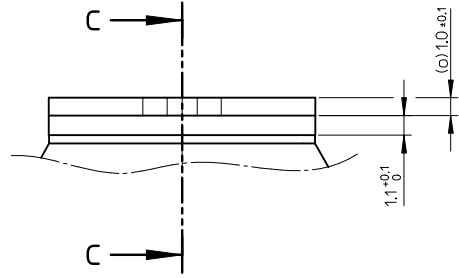


(o): FUNCTIONAL DIMENSIONS

|               |                                      |                                      |     |
|---------------|--------------------------------------|--------------------------------------|-----|
| PA 6.6 GF 20% | 5.80 <sup>+0.10</sup> / <sub>0</sub> | 5.60 <sup>+0.10</sup> / <sub>0</sub> | 1.3 |
| PBT *         | 5.80 <sup>+0.10</sup> / <sub>0</sub> | 5.80 <sup>+0.10</sup> / <sub>0</sub> | 2.3 |
| MATERIAL      | A                                    | B                                    | C   |

\* MATTER NOT RECOMMENDED WITH THIS PRINCIPLE ASSEMBLY

| REDRAWN DRAWING            |                          | QUALITY SYMBOLS |     | GENERAL TOLERANCES (UNLESS SPECIFIED)                |     | DIMENSION STYLE |         | SCALE           | DESIGN UNITS | FIRST ANGLE PROJECTION                      |  |
|----------------------------|--------------------------|-----------------|-----|--|-----|-----------------|---------|-----------------|--------------|---|--|
| EC NO: G2014-0038          | DRW: PGRANDCL 2013/09/04 | ▽=0             | ▽=0 | 4 PLACES ± ---                                       | mm  | INCH            | MM ONLY | 5:1             | METRIC       | TITLE                                       |  |
| CHKD: AHERBELIN 2013/09/04 | APP: OPLESSIS 2013/09/12 | ▽=0             | ▽=0 | 3 PLACES ± 0.10                                      | --- | ---             | ---     | ---             | ---          | FIXING SYSTEM ON BODY CONNECTIQUE INTERFACE |  |
|                            |                          |                 |     | 2 PLACES ± 0.10                                      | --- | ---             | ---     | ---             | ---          | DRAWN BY DATE                               |  |
|                            |                          |                 |     | 1 PLACE ± 0.10                                       | --- | ---             | ---     | ---             | ---          | CHECKED BY DATE                             |  |
|                            |                          |                 |     | 0 PLACE ± 0.10                                       | --- | ---             | ---     | ---             | ---          | APPROVED BY DATE                            |  |
|                            |                          |                 |     | ANGULAR ± 3°   |     |                 |         | DRAWN BY DATE   |              | MATERIAL NO.                                |  |
|                            |                          |                 |     | DRAFT WHERE APPLICABLE MUST REMAIN WITHIN DIMENSIONS |     |                 |         | DATE            |              | DOCUMENT NO.                                |  |
|                            |                          |                 |     |  |     |                 |         | MATERIAL NO. NA |              | SD-98969-004                                |  |
|                            |                          |                 |     |  |     |                 |         | SIZE A2         |              | SHEET NO. 2 OF 2                            |  |



**NOTES:**

- (ø): FONCTIONAL DIMENSIONS
- MATERIAL DEFINED ACCORDING TO THE REQUIRED PERFORMANCE AND FEASIBILITY RECCALL PERFORMANCE GENERALLY ACCEPTED WITH RESPECT TO THE CONNECTOR
- MATING FORCE CONNECTOR / ATTACHMENT = 50N MAX
- PULL OUT FORCE CONNECTOR / ATTACHMENT = 40N min

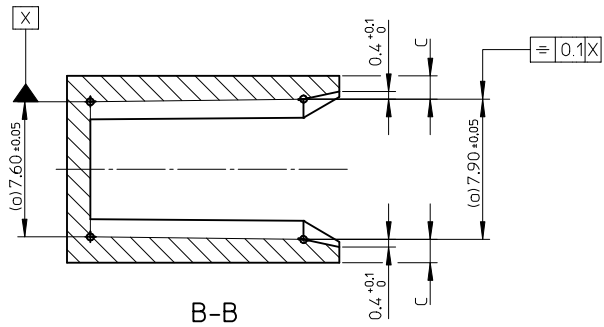
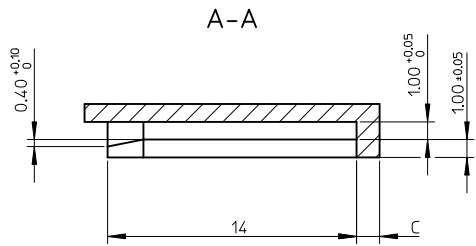
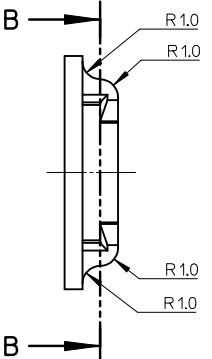
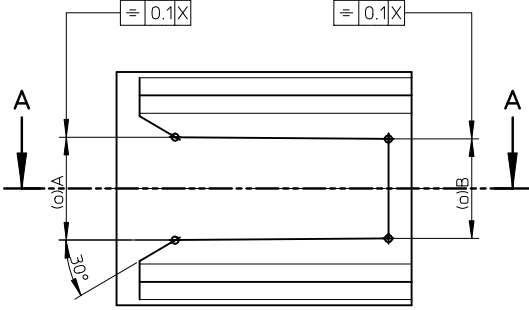
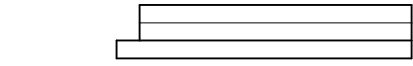
**MODIFICATIONS**

| REV. | DESCRIPTIONS  | NAME | DATE     |
|------|---------------|------|----------|
| B    | SEE SHEET 2/2 | VG   | 98/04/29 |
| C    | SEE SHEET 2/2 | PGR  | 13/09/04 |
|      |               |      |          |
|      |               |      |          |
|      |               |      |          |
|      |               |      |          |
|      |               |      |          |
|      |               |      |          |
|      |               |      |          |
|      |               |      |          |
|      |               |      |          |
|      |               |      |          |
|      |               |      |          |
|      |               |      |          |
|      |               |      |          |
|      |               |      |          |
|      |               |      |          |
|      |               |      |          |
|      |               |      |          |
|      |               |      |          |
|      |               |      |          |
|      |               |      |          |
|      |               |      |          |
|      |               |      |          |
|      |               |      |          |
|      |               |      |          |
|      |               |      |          |

|  |                      |  |                  |                      |              |   |  |
|--|----------------------|--|------------------|----------------------|--------------|---|--|
| <p><b>REDRAWN DRAWING</b></p> <p>EC NO: G2014-0038</p> <p>DRW: PGRANDCL 2013/09/04</p> <p>CHKD: AHERBELIN 2013/09/04</p> <p>APPR: OPLESSIS 2013/09/12</p> <p>DESCRIPTION</p> | QUALITY SYMBOLS      | GENERAL TOLERANCES (UNLESS SPECIFIED)                | DIMENSION STYLE  | SCALE                | DESIGN UNITS | FIRST ANGLE PROJECTION  | TITLE  |
|  | $\nabla = 0$         | mm INCH  | MM ONLY          | 5:1                  | METRIC       |   |  |
|  | $\nabla = 0$         | 4 PLACES ± --- ± ---                                 | DRAWN BY DATE    | PGRANDCL 2013/09/04  |              |   | <p><b>molex</b></p> <p>DOCUMENT NO. SD-98969-004</p> <p>SHEET NO. 1 OF 2</p> |
|  | $\nabla = 0$         | 3 PLACES ± 0.10 ± ---                                | CHECKED BY DATE  | AHERBELIN 2013/09/04 |              |   |  |
|  |                      | 2 PLACES ± 0.10 ± ---                                | APPROVED BY DATE | OPLESSIS 2013/09/12  |              |   |  |
|  | 1 PLACE ± 0.10 ± --- | MATERIAL NO.   |                  | NA                   |              |   |  |
|  | 0 PLACE ± 0.10 ± --- | DRAFT WHERE APPLICABLE MUST REMAIN WITHIN DIMENSIONS |                  | SIZE A2              |              | THIS DRAWING CONTAINS INFORMATION THAT IS PROPRIETARY TO MOLEX INCORPORATED AND SHOULD NOT BE USED WITHOUT WRITTEN PERMISSION |  |

MODIFICATIONS

| REV. | DESCRIPTIONS   | NAME | DATE     |
|------|--|------|----------|
| A    | 12.5±0.15 WAS 12.5±0.65/-0.15 - ADDED ANGLE 30°<br>SECTION A-A: 0.4±0.1/0 WAS 0.4±0.05 - TO SUPPRESS 2<br>SECTION B-B: 0.4±0.1/0 WAS 0.4 | FP   | 98/02/26 |
| B    | CREATION SHEET 1/2<br>CREATION TAB WITH VARIANT PA 6.6 GF 20%<br>VARIANT ON PBT: TO SUPPRESS 5.6 ±0.1/0                                  | VG   | 98/04/29 |
| C    | CATIA File Format redrawn on OSDM CADSystem for Molex<br>TO STEM FROM SPECIFICATION DRAWING N° 70  | PGR  | 13/09/04 |

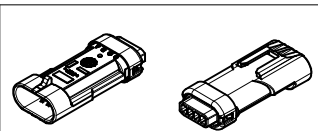
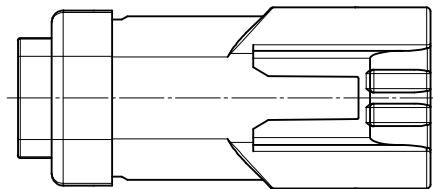
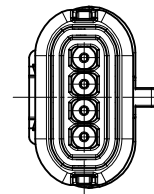
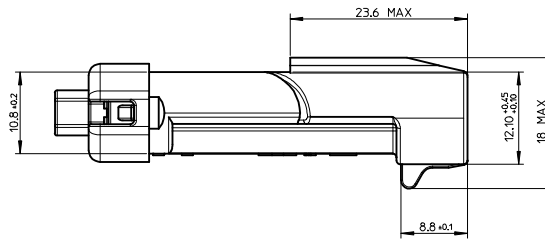
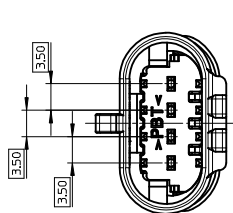
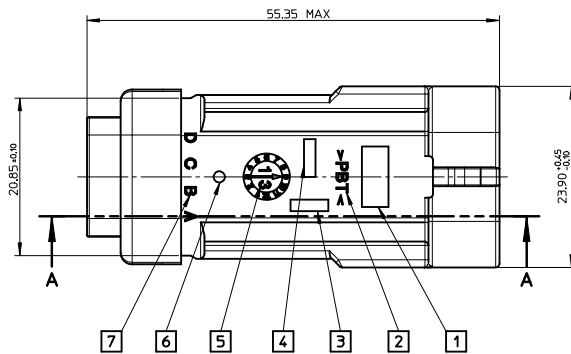
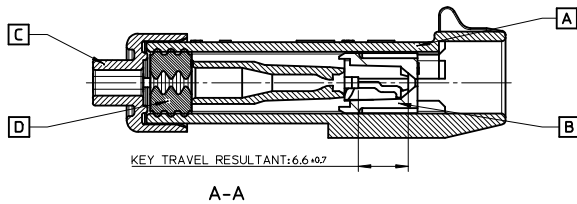


(o): FUNCTIONAL DIMENSIONS

|               |                                    |                                    |     |
|---------------|------------------------------------|------------------------------------|-----|
| PA 6.6 GF 20% | 5.80 <sup>+0.10</sup> <sub>0</sub> | 5.60 <sup>+0.10</sup> <sub>0</sub> | 1.3 |
| PBT *         | 5.80 <sup>+0.10</sup> <sub>0</sub> | 5.80 <sup>+0.10</sup> <sub>0</sub> | 2.3 |
| MATERIAL      | A                                  | B                                  | C   |

\* MATTER NOT RECOMMENDED WITH THIS PRINCIPLE ASSEMBLY

| <b>REDRAWN DRAWING</b><br>EC NO: G2014-0038<br>DRWNGRANDCL 2013/09/04<br>CHKD: AHERBELIN 2013/09/04<br>APPR: OPLESSIS 2013/09/12 | QUALITY SYMBOLS                              | GENERAL TOLERANCES (UNLESS SPECIFIED)   | DIMENSION STYLE | SCALE | DESIGN UNITS | FIRST ANGLE PROJECTION |       |       |          |        |       |          |        |       |         |        |       |         |        |       |   |          |      |       |          |            |   |            |      |           |            |             |      |  |          |            |  |         |     |        |  |
|--|--|---|-----------------|-------|--------------|------------------------|-------|-------|----------|--------|-------|----------|--------|-------|---------|--------|-------|---------|--------|-------|---|----------|------|-------|----------|------------|---|------------|------|-----------|------------|-------------|------|--|----------|------------|--|---------|-----|--------|--|
|  | ∇=0<br>∇=0<br>∇=0                            | <table border="1"> <thead> <tr> <th></th> <th>mm</th> <th>INCH</th> </tr> </thead> <tbody> <tr> <td>4 PLACES</td> <td>± ---</td> <td>± ---</td> </tr> <tr> <td>3 PLACES</td> <td>± 0.10</td> <td>± ---</td> </tr> <tr> <td>2 PLACES</td> <td>± 0.10</td> <td>± ---</td> </tr> <tr> <td>1 PLACE</td> <td>± 0.10</td> <td>± ---</td> </tr> <tr> <td>0 PLACE</td> <td>± 0.10</td> <td>± ---</td> </tr> </tbody> </table> |                 | mm    | INCH         | 4 PLACES               | ± --- | ± --- | 3 PLACES | ± 0.10 | ± --- | 2 PLACES | ± 0.10 | ± --- | 1 PLACE | ± 0.10 | ± --- | 0 PLACE | ± 0.10 | ± --- | <table border="1"> <thead> <tr> <th>DRAWN BY</th> <th>DATE</th> <th>TITLE</th> </tr> </thead> <tbody> <tr> <td>PGRANDCL</td> <td>2013/09/04</td> <td rowspan="3">FIXING SYSTEM ON BODY CONNECTIQUE INTERFACE</td> </tr> <tr> <td>CHECKED BY</td> <td>DATE</td> </tr> <tr> <td>AHERBELIN</td> <td>2013/09/04</td> </tr> <tr> <td>APPROVED BY</td> <td>DATE</td> <td></td> </tr> <tr> <td>OPLESSIS</td> <td>2013/09/12</td> <td></td> </tr> </tbody> </table> | DRAWN BY | DATE | TITLE | PGRANDCL | 2013/09/04 | FIXING SYSTEM ON BODY CONNECTIQUE INTERFACE | CHECKED BY | DATE | AHERBELIN | 2013/09/04 | APPROVED BY | DATE |  | OPLESSIS | 2013/09/12 |  | MM ONLY | 5:1 | METRIC |  |
|  |  | mm  | INCH            |       |              |                        |       |       |          |        |       |          |        |       |         |        |       |         |        |       |   |          |      |       |          |            |   |            |      |           |            |             |      |  |          |            |  |         |     |        |  |
| 4 PLACES   | ± ---  | ± ---   |                 |       |              |                        |       |       |          |        |       |          |        |       |         |        |       |         |        |       |   |          |      |       |          |            |   |            |      |           |            |             |      |  |          |            |  |         |     |        |  |
| 3 PLACES   | ± 0.10                                       | ± ---   |                 |       |              |                        |       |       |          |        |       |          |        |       |         |        |       |         |        |       |   |          |      |       |          |            |   |            |      |           |            |             |      |  |          |            |  |         |     |        |  |
| 2 PLACES   | ± 0.10                                       | ± ---   |                 |       |              |                        |       |       |          |        |       |          |        |       |         |        |       |         |        |       |   |          |      |       |          |            |   |            |      |           |            |             |      |  |          |            |  |         |     |        |  |
| 1 PLACE  | ± 0.10                                       | ± ---   |                 |       |              |                        |       |       |          |        |       |          |        |       |         |        |       |         |        |       |   |          |      |       |          |            |   |            |      |           |            |             |      |  |          |            |  |         |     |        |  |
| 0 PLACE  | ± 0.10                                       | ± ---   |                 |       |              |                        |       |       |          |        |       |          |        |       |         |        |       |         |        |       |   |          |      |       |          |            |   |            |      |           |            |             |      |  |          |            |  |         |     |        |  |
| DRAWN BY   | DATE   | TITLE   |                 |       |              |                        |       |       |          |        |       |          |        |       |         |        |       |         |        |       |   |          |      |       |          |            |   |            |      |           |            |             |      |  |          |            |  |         |     |        |  |
| PGRANDCL   | 2013/09/04                                   | FIXING SYSTEM ON BODY CONNECTIQUE INTERFACE   |                 |       |              |                        |       |       |          |        |       |          |        |       |         |        |       |         |        |       |   |          |      |       |          |            |   |            |      |           |            |             |      |  |          |            |  |         |     |        |  |
| CHECKED BY   | DATE   |   |                 |       |              |                        |       |       |          |        |       |          |        |       |         |        |       |         |        |       |   |          |      |       |          |            |   |            |      |           |            |             |      |  |          |            |  |         |     |        |  |
| AHERBELIN  | 2013/09/04                                   |   |                 |       |              |                        |       |       |          |        |       |          |        |       |         |        |       |         |        |       |   |          |      |       |          |            |   |            |      |           |            |             |      |  |          |            |  |         |     |        |  |
| APPROVED BY  | DATE   |   |                 |       |              |                        |       |       |          |        |       |          |        |       |         |        |       |         |        |       |   |          |      |       |          |            |   |            |      |           |            |             |      |  |          |            |  |         |     |        |  |
| OPLESSIS   | 2013/09/12                                   |   |                 |       |              |                        |       |       |          |        |       |          |        |       |         |        |       |         |        |       |   |          |      |       |          |            |   |            |      |           |            |             |      |  |          |            |  |         |     |        |  |
| ANGULAR ± 3°<br>DRAFT WHERE APPLICABLE MUST REMAIN WITHIN DIMENSIONS   | MATERIAL NO. NA<br>DOCUMENT NO. SD-98969-004 | SIZE A2<br>THIS DRAWING CONTAINS INFORMATION THAT IS PROPRIETARY TO MOLEX INCORPORATED AND SHOULD NOT BE USED WITHOUT WRITTEN PERMISSION  |                 |       |              | SHEET NO. 2 OF 2       |       |       |          |        |       |          |        |       |         |        |       |         |        |       |   |          |      |       |          |            |   |            |      |           |            |             |      |  |          |            |  |         |     |        |  |



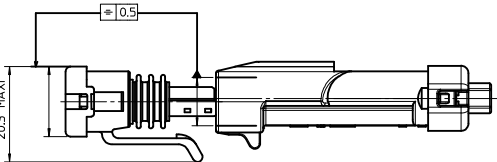
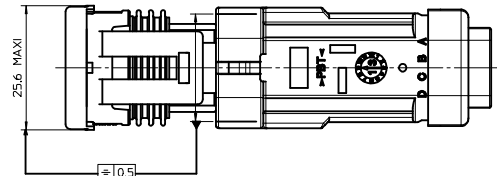
| REP | DESIGNATION                  | MATERIAL            |
|-----|------------------------------|---------------------|
| D   | SEAL GROMMET - 4 CKT         | SILICONE / BLUE     |
| C   | PIN CONN SEALED GRID - 4 CKT | PBT / BLACK         |
| B   | PIN HSG TPA YEL - 4 CKT      | PBT GF 20% / YELLOW |
| A   | PIN CONN SEAL BLK 15 - 4 CKT | PBT / BLACK         |

| REV. | DESCRIPTIONS  | NAME | DATE       |
|------|---------------|------|------------|
| A    | FIRST RELEASE | PGR  | 2013/09/03 |

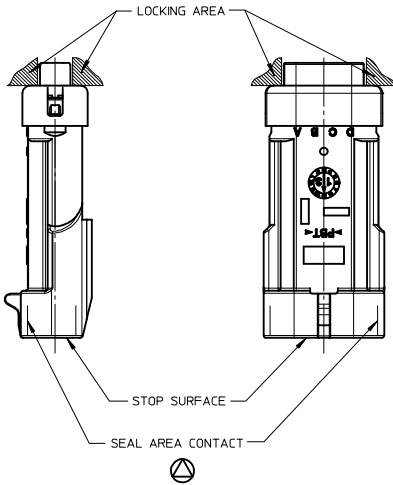
- 1 MOLEX LOGO
- 2 MATERIAL
- 3 REVISION LEVEL
- 4 SUPPLIER PART NUMBER
- 5 DATUM
- 6 CAVITY NUMBER
- 7 CAVITY MARK

|  |   |   |                      |   |                      |                                   |  |  |                     |  |
|--|---|---|----------------------|---|----------------------|-----------------------------------|--|--|---------------------|--|
| <b>FIRST RELEASE DOC</b><br>EC NO: G2074-0036<br>DRAWN BY: PGRANDCL<br>CHECKED BY: AHERBELIN<br>APPROVED BY: APPROPRIATE<br>2013/09/03<br>2013/09/03<br>2013/10/17 | <b>QUALITY SYMBOLS</b><br>□=0<br>▽=0<br>▽=0 | <b>GENERAL TOLERANCES (UNLESS SPECIFIED)</b>  |                      | <b>DIMENSION STYLE</b><br>MM ONLY                       |                      | <b>SCALE</b><br>3:1               | <b>DESIGN UNITS</b><br>METRIC              | <input checked="" type="checkbox"/> FIRST ANGLE PROJECTION                 |                     |  |
|  |   | 4 PLACES ± --- ± ---  | 3 PLACES ± --- ± --- | 2 PLACES ± 0.10 ± ---                                   | 1 PLACE ± 0.10 ± --- | 0 PLACE ± 0.10 ± ---              | DRAWN BY: PGRANDCL<br>DATE: 2013/09/03     | <b>TITLE</b><br>PIN CONN SEALED<br>W / BLACK<br>15 - 4 CKT<br><b>molex</b> |                     |  |
|  |   | ANGULAR ± 2 °   |                      | DRAFT WHERE APPLICABLE<br>MUST REMAIN WITHIN DIMENSIONS |                      | MATERIAL NO.<br><b>0989741011</b> | APPROVED BY: AHERBELIN<br>DATE: 2013/09/03 | DOCUMENT NO.<br><b>SD-98974-001</b>  | SHEET NO.<br>1 OF 2 |  |
|  |   | THIS DRAWING CONTAINS INFORMATION THAT IS PROPRIETARY TO MOLEX INCORPORATED AND SHOULD NOT BE USED WITHOUT WRITTEN PERMISSION |                      |   |                      | SIZE<br>1                         |  |  |                     |  |

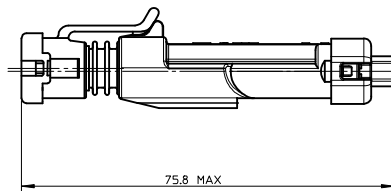
**CLEARANCE FOR CONNECTOR MATE AND UNMATE**



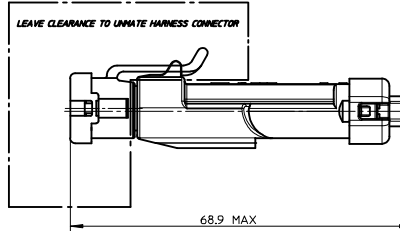
**CAVITY - TERMINAL LOCATION**



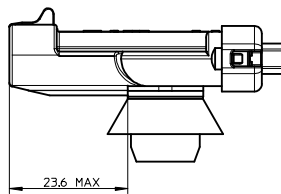
**DIMENSIONS BEFORE ELECTRICAL CONTACT**



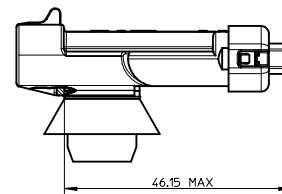
**DIMENSIONS AFTER LOCK**



**CONNECTOR SIZE BEFORE ENGAGE POSITION OF SHEET RUNNER ATTACHMENT**



**CONNECTOR SIZE BEFORE ENGAGE POSITION OF SHEET RUNNER ATTACHMENT**



**NOTE:**

- DO NOT SECURE CONNECTOR ON AREAS IDENTIFIED BY
- DO NOT DAMAGE CONNECTOR ON AREAS IDENTIFIED BY
- INTERFACE FOR ATTACHMENT RUNNER SPECIFIED BY SD-98969-004
- MALE CONNECTOR MATES WITH FEMALE CONNECTOR
- FIXTURE CONNECTOR RETENTION FORCE:  
- 100 TO 125N WITH PUSH TEST  
- 25 TO 125N WITHOUT PUSH TEST
- USING TERMINALS:  
SCHEMA 2 15 TERMINAL.
- WIRE Ø MINI AND MAX TO USE:  
1.45 ≤ WIRE Ø ≤ 2.1

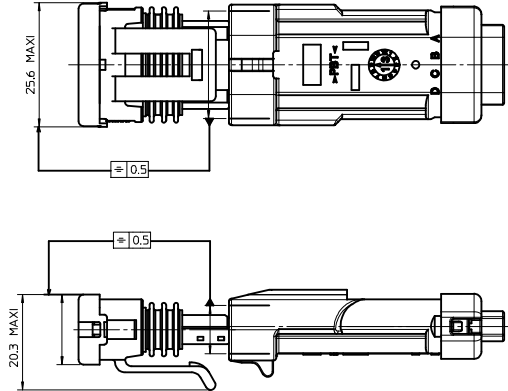
**MODIFICATIONS**

| REV. | DESCRIPTIONS    | NAME | DATE       |
|------|-----------------|------|------------|
| A    | - FIRST RELEASE | PGR  | 2013/09/03 |
|      |                 |      |            |
|      |                 |      |            |
|      |                 |      |            |
|      |                 |      |            |
|      |                 |      |            |
|      |                 |      |            |
|      |                 |      |            |
|      |                 |      |            |
|      |                 |      |            |
|      |                 |      |            |
|      |                 |      |            |
|      |                 |      |            |
|      |                 |      |            |
|      |                 |      |            |
|      |                 |      |            |
|      |                 |      |            |
|      |                 |      |            |
|      |                 |      |            |
|      |                 |      |            |
|      |                 |      |            |
|      |                 |      |            |
|      |                 |      |            |
|      |                 |      |            |
|      |                 |      |            |

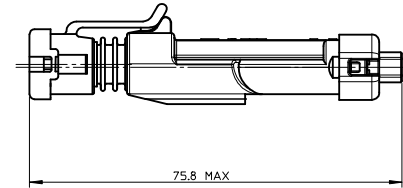
|  |   |                                      |   |   |  |  |  |                                   |                              |                     |
|--|---|--------------------------------------|---|---|--|--|--|-----------------------------------|------------------------------|---------------------|
| <p><b>FIRST RELEASE DOC</b><br/>                 EC NO: G2074-0036<br/>                 DRAWN BY: PGRANDCL<br/>                 CHKD/AHERBELIN<br/>                 APPROF/PLESSIS</p> | 2013/09/03<br>2013/09/03<br>2013/10/17  | QUALITY SYMBOLS<br>▽=0<br>▽=0<br>▽=0 | GENERAL TOLERANCES (UNLESS SPECIFIED)<br>mm INCH<br>4 PLACES ±--- ±---<br>3 PLACES ±--- ±---<br>2 PLACES ±0.10 ±---<br>1 PLACE ±0.10 ±---<br>0 PLACE ±0.10 ±---<br>ANGULAR ± 2°<br>DRAFT WHERE APPLICABLE MUST REMAIN WITHIN DIMENSIONS | DIMENSION STYLE<br><b>MM ONLY</b><br>DRAWN BY: PGRANDCL<br>CHECKED BY: AHERBELIN<br>APPROVED BY: OPLESSIS   | DATE: 2013/09/03<br>DATE: 2013/09/03<br>DATE: 2013/10/17 | SCALE: 2:1<br>DESIGN UNITS: METRIC<br>FIRST ANGLE PROJECTION | TITLE:<br>PIN CONN SEALED<br>W / BLACK<br>15 - 4 CKT<br> | MATERIAL NO:<br><b>0989741011</b> | DOCUMENT NO:<br>SD-98974-001 | SHEET NO:<br>2 OF 2 |
|  | 2013/09/03<br>2013/09/03<br>2013/10/17  | PGRANDCL<br>AHERBELIN<br>OPLESSIS    | 2013/09/03<br>2013/09/03<br>2013/10/17  | 4 PLACES ±--- ±---<br>3 PLACES ±--- ±---<br>2 PLACES ±0.10 ±---<br>1 PLACE ±0.10 ±---<br>0 PLACE ±0.10 ±---<br>ANGULAR ± 2°<br>DRAFT WHERE APPLICABLE MUST REMAIN WITHIN DIMENSIONS | 0989741011   | SD-98974-001   | 2 OF 2   |                                   |                              |                     |
|  | THIS DRAWING CONTAINS INFORMATION THAT IS PROPRIETARY TO MOLEX INCORPORATED AND SHOULD NOT BE USED WITHOUT WRITTEN PERMISSION |                                      |   |   |  |  |  |                                   |                              |                     |
|  | INCORPORATED AND SHOULD NOT BE USED WITHOUT WRITTEN PERMISSION  |                                      |   |   |  |  |  |                                   |                              |                     |



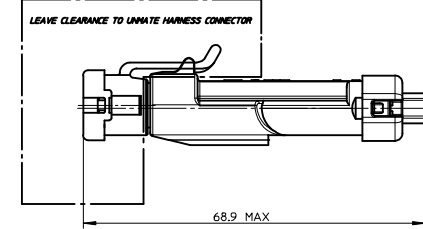
**CLEARANCE FOR CONNECTOR MATE AND UNMATE**



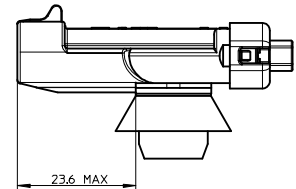
**DIMENSIONS BEFORE ELECTRICAL CONTACT**



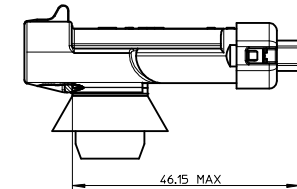
**DIMENSIONS AFTER LOCK**



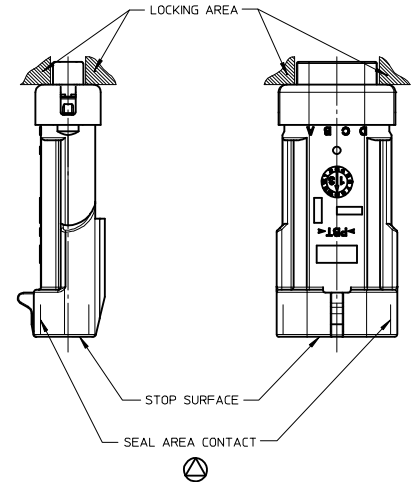
**CONNECTOR SIZE BEFORE ENGAGE POSITION OF SHEET RUNNER ATTACHMENT**



**CONNECTOR SIZE BEFORE ENGAGE POSITION OF SHEET RUNNER ATTACHMENT**



**CAVITY - TERMINAL LOCATION**



**NOTE:**

- DO NOT SECURE CONNECTOR ON AREAS IDENTIFIED BY
- DO NOT DAMAGE CONNECTOR ON AREAS IDENTIFIED BY
- INTERFACE FOR ATTACHMENT RUNNER SPECIFIED BY SD-98969-004
- MALE CONNECTOR MATES WITH FEMALE CONNECTOR
- FIXTURE CONNECTOR RETENTION FORCE:
  - 100 TO 125N WITH PUSH TEST
  - 25 TO 125N WITHOUT PUSH TEST
- USING TERMINALS:
  - SCHM 2 15 TERMINAL.
- WIRE # MIN AND MAX TO USE:
  - 145 ≤ WIRE # ≤ 21

**MODIFICATIONS**

| REV. | DESCRIPTIONS    | NAME | DATE       |
|------|-----------------|------|------------|
| A    | - FIRST RELEASE | PGR  | 2013/09/03 |
|      |                 |      |            |
|      |                 |      |            |
|      |                 |      |            |
|      |                 |      |            |
|      |                 |      |            |
|      |                 |      |            |
|      |                 |      |            |
|      |                 |      |            |
|      |                 |      |            |
|      |                 |      |            |
|      |                 |      |            |
|      |                 |      |            |
|      |                 |      |            |
|      |                 |      |            |
|      |                 |      |            |
|      |                 |      |            |
|      |                 |      |            |
|      |                 |      |            |
|      |                 |      |            |

|   |            |                                      |  |   |                  |        |                           |              |   |                     |
|---|------------|--------------------------------------|--|---|------------------|--------|---------------------------|--------------|---|---------------------|
| <b>FIRST RELEASE DOC</b><br>DEC NO: G2074-0036<br>DRAWN BY: PGRANDCL<br>CHKD: AHERBELIN<br>APPR: P. FLESSIS | 2013/09/03 | QUALITY SYMBOLS<br>∇=0<br>∇=0<br>∇=0 | GENERAL TOLERANCES (UNLESS SPECIFIED)                |   | DIMENSION STYLE  |        | SCALE                     | DESIGN UNITS | FIRST ANGLE PROJECTION                  |                     |
|   | 2013/09/03 |                                      | mm   | INCH  | 2:1              | METRIC |                           |              |   |                     |
|   | 2013/09/03 | 4 PLACES ± --- ± ---                 | DRAWN BY: PGRANDCL                                   |   | DATE: 2013/09/03 |        | TITLE: PIN CONN SEALED    |              | w / BLACK<br>15 - 4 CKT<br><b>molex</b> |                     |
|   | 2013/10/17 | 3 PLACES ± --- ± ---                 | CHECKED BY: AHERBELIN                                |   | DATE: 2013/09/03 |        | DOCUMENT NO: SD-98974-001 |              |   | SHEET NO:<br>2 OF 2 |
|   |            | 2 PLACES ± 0.10 ± ---                | APPROVED BY: P. FLESSIS                              |   | DATE: 2013/10/17 |        |                           |              |   |                     |
|   |            | 1 PLACE ± 0.10 ± ---                 | MATERIAL NO: 0989741011                              |   |                  |        |                           |              |   |                     |
|   |            | 0 PLACE ± 0.10 ± ---                 | ANGULAR ± 2°   |   |                  |        |                           |              |   |                     |
|   |            |                                      | DRAFT WHERE APPLICABLE MUST REMAIN WITHIN DIMENSIONS |   |                  |        |                           |              |   |                     |
|   |            |                                      |  | THIS DRAWING CONTAINS INFORMATION THAT IS PROPRIETARY TO MOLEX INCORPORATED AND SHOULD NOT BE USED WITHOUT WRITTEN PERMISSION |                  |        |                           |              |   |                     |