

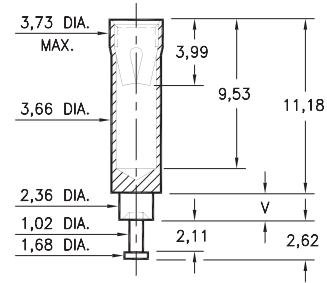
# PIN RECEPTACLES

FOR 1,65 - 2,08 DIAMETER PINS

## 0395

0395-X-15-XX-07-XX-10-0

Swage mount in 2,44 hole

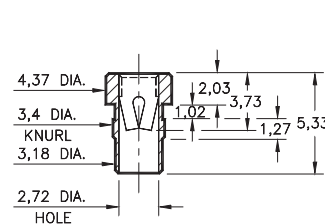


Basic Part Number	Board Thickness	Length V
0395-1	0,79	1,57
0395-2	1,57	2,39
0395-3	2,39	3,18
0395-4	3,18	3,96
0395-5	4,78	5,56

## 8016

8016-0-15-XX-07-XX-10-0

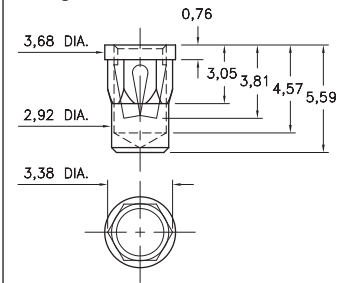
Press-fit in 3,33 mounting hole



## 0350

0350-0-15-XX-07-XX-10-0

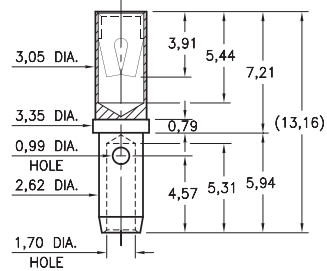
Hex press-fit in 3,28±0,05 plated through-hole



## 0714

0714-0-33-XX-07-XX-10-0

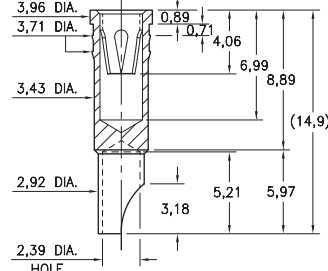
Wire crimp termination. Accepts wire sizes 16 AWG Max. / 20 AWG Min.



## 0778

0778-0-18-XX-07-XX-10-0

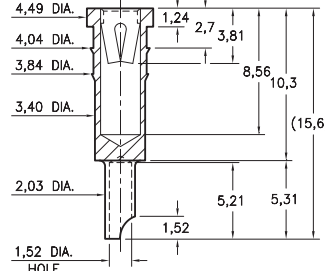
Press-fit in 3,63 mounting hole. Accepts wire sizes up to 14 AWG



## 9177

9177-0-18-XX-07-XX-10-0

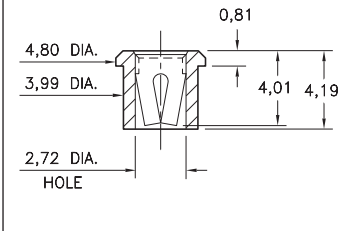
Press-fit in 3,84 mounting hole. Accepts wire sizes up to 16 AWG



## 5391

5391-0-15-XX-07-XX-10-0

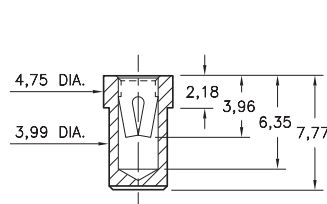
Solder mount in 4,04 min. mounting hole. Also available on 16mm wide carrier tape: 1,825 parts per 330mm reel. See page 194.19 for Tape & Reel details



## 8837

8837-0-15-XX-14-XX-10-0

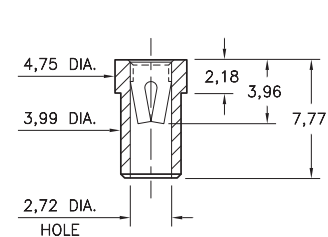
Solder mount in 4,04 min. mounting hole



## 9837

9837-0-15-XX-14-XX-10-0

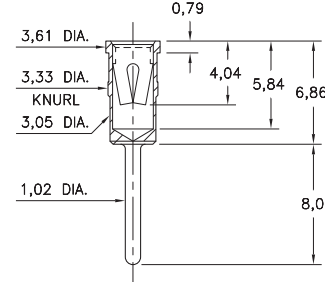
Solder mount in 4,04 min. mounting hole



## 8994

8994-0-15-XX-07-XX-04-0

Press-fit in 3,25 mounting hole



### SPECIFICATIONS:

Shell Material: Brass Alloy 360, 1/2 Hard

Contact Material: Beryllium Copper Alloy 172, HT

Dimensions: Millimeters

Tolerances On: Lengths: ±0,13  
Diameters: ±0,051  
Angles: ±2°



ORDER CODE: **XXXX - X - XX - XX - XX - 10 - 0**

BASIC PART #

SPECIFY SHELL FINISH:

- 01 5,08µm TIN/LEAD OVER NICKEL
- ◆ 80 5,08µm TIN OVER NICKEL (RoHS)
- ◆ 15 0,25µm GOLD OVER NICKEL (RoHS)

SPECIFY CONTACT FINISH:

- 01 5,08µm TIN/LEAD OVER NICKEL
- ◆ 80 5,08µm TIN OVER NICKEL (RoHS)
- ◆ 27 0,76µm GOLD OVER NICKEL (RoHS)

SELECT CONTACT:

#07 or #14 CONTACT (DATA ON PAGE 261)

(For alternate contact choices, see group H on page 248)

