

MICRO SWITCH

A DIVISION OF MINNEAPOLIS-HONEYWELL REGULATOR COMPANY
 FREEPORT, ILLINOIS
 FED. MFR. CODE 91929

SWITCH-BASIC

CATALOG LISTING

V3-601

CK-GO100

(M) V3-601
 ISSUE 8

V3-601

M

DRAWING NUMBER

ISSUE 8
 12/16

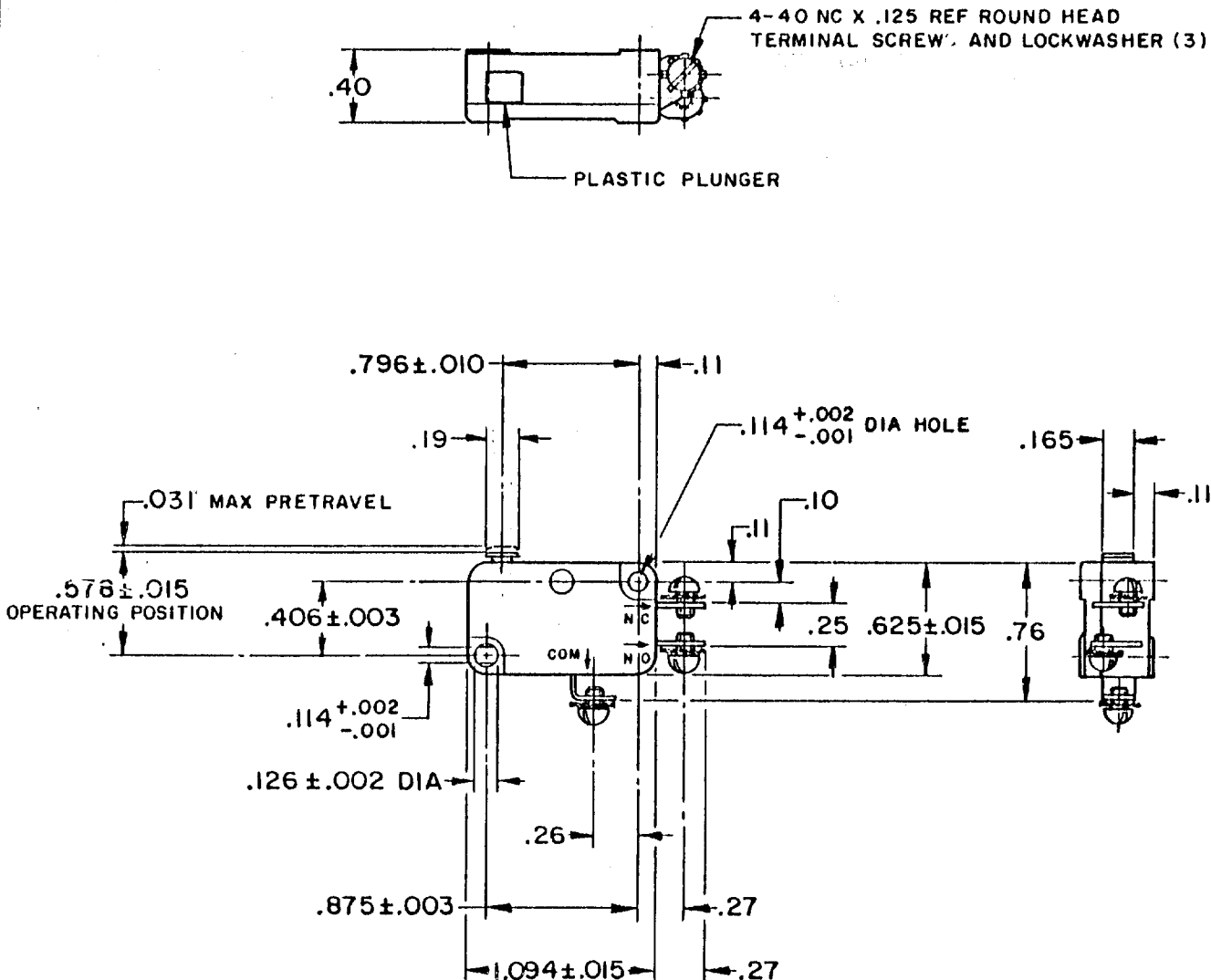
REPLACES

RELEASE NO.

CHECK

REVISIONS

A	CO15698	M B F	9 MAR 61
B	CO21688	M B F	3 OCT 66
C	CO24941	M B S	3 DEC 68
D	CO26075	M B S	27 AUG 69
E	CO26511	R E R	21 OCT 69
F	CO39182	W L W	18 FEB 78
G	CO56987	SMA	1 OCT 85
H	CO73764	D H D	30 NOV 92



THIS DRAWING COVERS A PROPRIETARY ITEM AND IS THE PROPERTY OF MICRO SWITCH, A DIVISION OF MINNEAPOLIS-HONEYWELL REGULATOR CO. THIS DRAWING IS NOT TO BE COPIED OR USED WITHOUT THE APPROVAL OF MICRO SWITCH.

CHARACTERISTICS	
OPERATING FORCE	6-14 OZ
RELEASE TRAVEL	.005-.017
RELEASE FORCE	4 OZ MIN
DIFFERENTIAL TRAVEL	.006-.016
OVERTRAVEL	.010-.024
FREE POSITION	.625 MAX

ELECTRICAL DATA	
CONTACT ARRANGEMENT	S P D T
L86	15.1A 1/3HP 125, 250 VAC 1/2A 125 VDC, 1/4A 250 VDC 5A 125 VAC "L"

SCALE FULL	
DO NOT SCALE PRINT.	
UNLESS OTHERWISE SPECIFIED	
DIMENSIONS ARE IN INCHES	
TOLERANCES ARE:	
ONE PLACE (.0)	±.030
TWO PLACE (.00)	±.015
THREE PLACE (.000)	±.008
ANGLES	±
WEIGHT .023 LB MAX	



9 MARCH 61 CHECK DAW 10 MAR '61

PO-50378