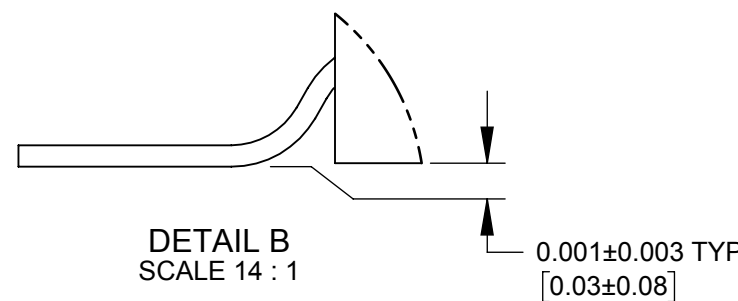


SCHEMATIC

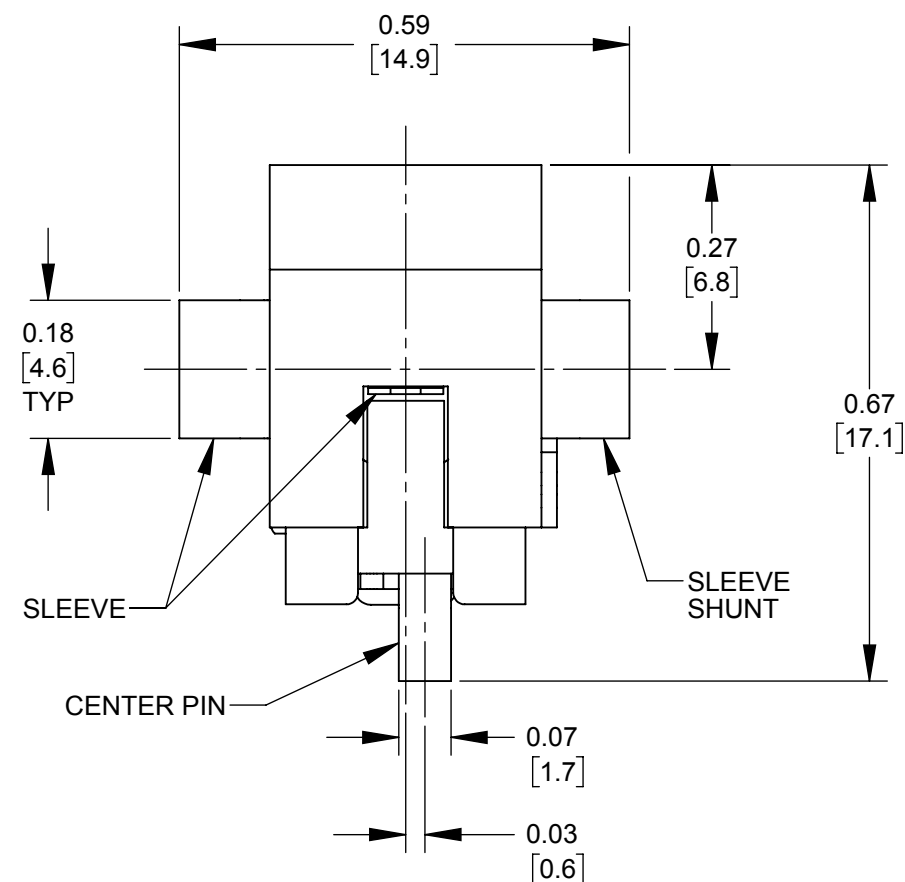
SECTION A-A

NOTES:

1. THIS PRODUCT IS RoHS COMPLIANT.
2. MATERIALS:  
 CENTER PIN: COPPER ALLOY, NICKEL PLATED  
 SLEEVE CONTACT: SPRING COPPER ALLOY, SILVER PLATED  
 PIN TERMINAL AND SHUNT: COPPER ALLOY, SILVER PLATED  
 HOUSING AND COVER: HIGH TEMPERATURE THERMOPLASTIC, BLACK
3. SPECIFICATIONS:  
 LIFE: 5000 CYCLES;  
 INSERTION FORCE: 5LB [2.3 KG] MAX;  
 WITHDRAWL FORCE: 0.5 LB [0.2 KG] MIN;  
 CONTACT RESISTANCE: 30 MILLIOHM MAX, 60 MILLIOHM MAX. AFTER TEST;  
 INSULATION RESISTANCE: 30 MEGAOHM MIN. @ 100VDC;  
 DIELECTRIC WITHSTANDING VOLTAGE: 250VAC FOR 1 MINUTE;  
 CURRENT (CARRYING): 5A  
 OPERATING TEMPERATURE: -30°C TO +65°C

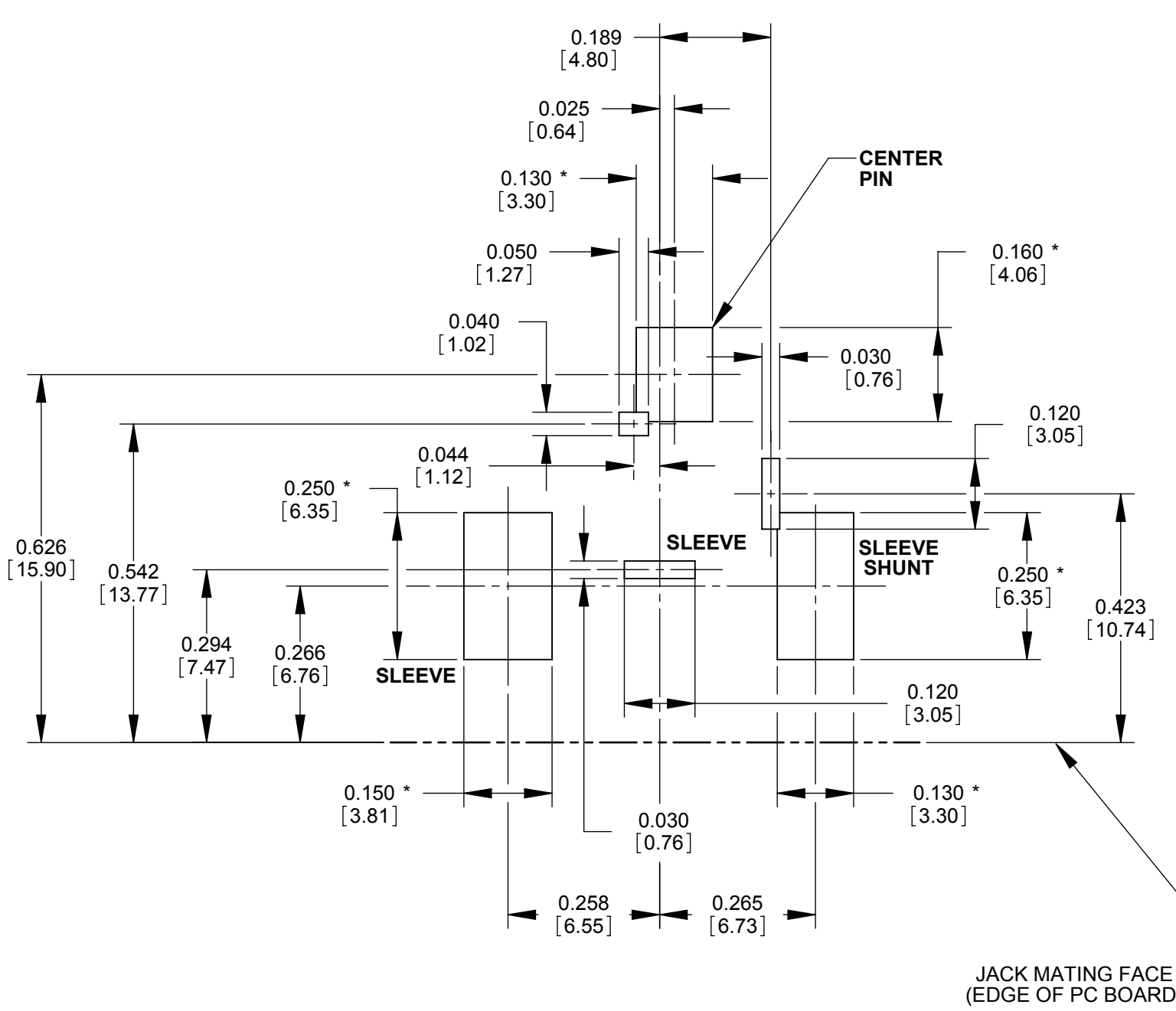


DETAIL B  
SCALE 14 : 1

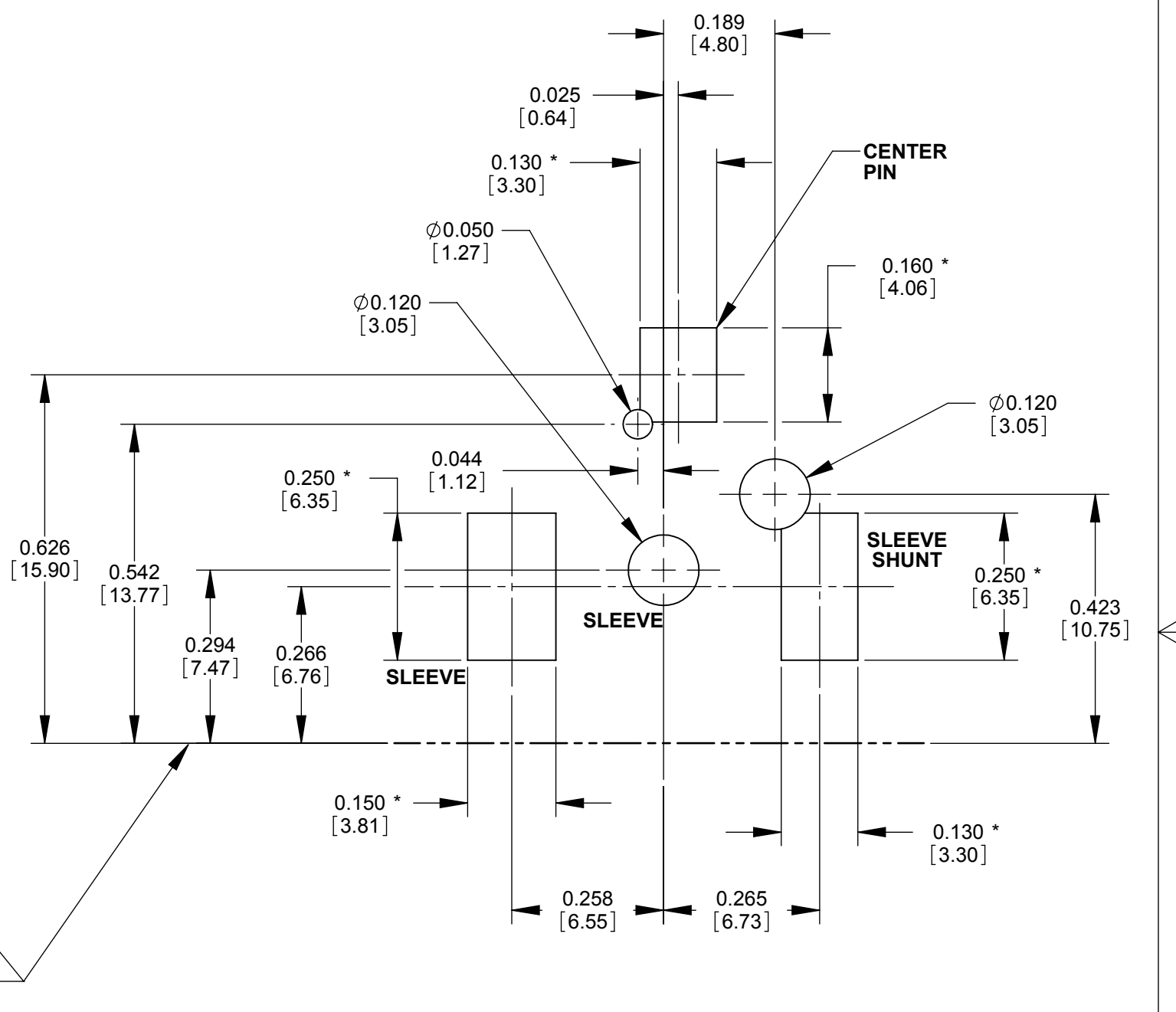


**CUSTOMER DRAWING**

					STAR SYMBOL DENOTES CRITICAL DIMENSION	THIS DRAWING DESCRIBES A DESIGN CONSIDERED PROPRIETARY IN NATURE, DEVELOPED AND MANUFACTURED BY SWITCHCRAFT INC. AND IS RELEASED ON A CONFIDENTIAL BASIS FOR IDENTIFICATION PURPOSES ONLY.					
					UNLESS OTHERWISE SPECIFIED	SIZE	WIDTH	MULT	LBS/M	TEMPER	
					1. ALL DIMENSIONS IN INCHES [mm]	FINISH				MATERIAL	
					- TWO PLACE DECIMALS ±0.02 [0.5]	SPEC No.				SPEC No.	
					- THREE PLACE DECIMALS ±0.005 [0.13]	FIRST USED ON		SCALE		<b>Switchcraft</b> <sup>®</sup>	
						4:1					
A	28064	08-30-18	PC	TJK	DATE DRAWN	BY	CHKD	APVD	SHEET 1 OF 2		
REV	ECO NUMBER	DATE	BY	APVD	10-12-17	SRC	TJK	TJK	PART No.		
REVISIONS					DO NOT SCALE DRAWING					RASH712BKZ	
										REV	
										A	



**RECOMMENDED PC BOARD LAYOUT**  
(COMPONENT SIDE)



**ALTERNATE PC BOARD LAYOUT**  
(COMPONENT SIDE)

JACK MATING FACE  
(EDGE OF PC BOARD)

NOTE: \* SURFACE MOUNT PADS.

**CUSTOMER DRAWING**

SCALE 4:1	<b>Switchcraft</b> <sup>®</sup>	
DATE DRAWN 10-12-17		
DRAWN BY SRC	TOOL No. RASH712BKZ	REV A

SolidWorks CAD File **B**