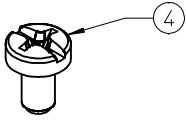
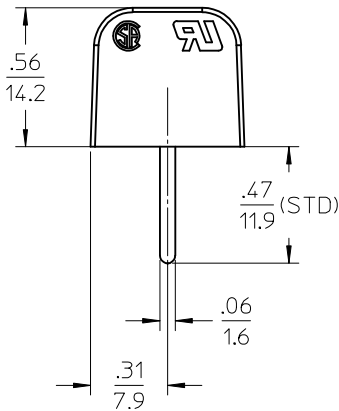
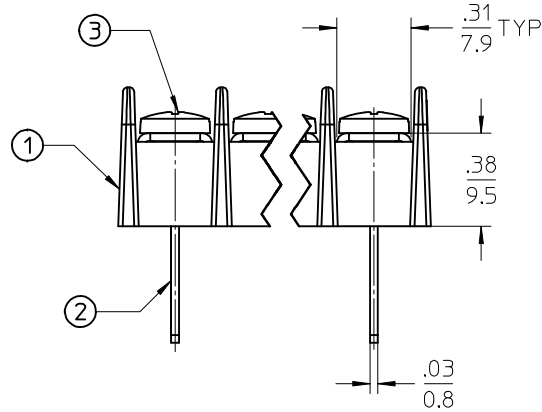
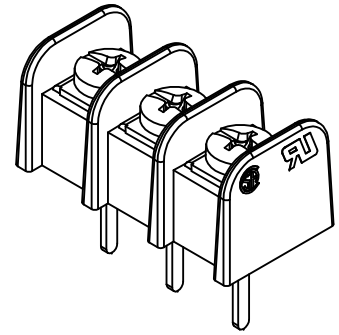
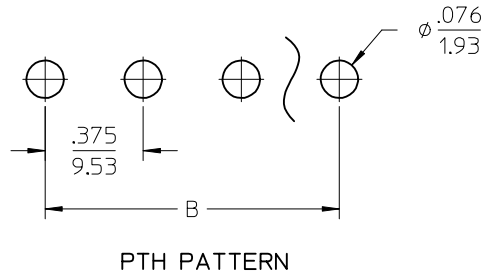
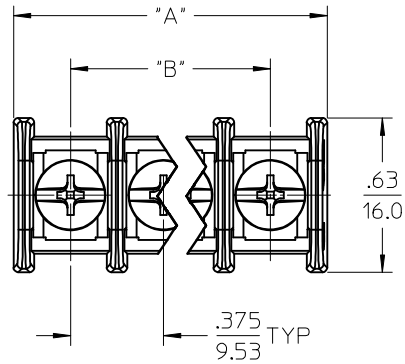
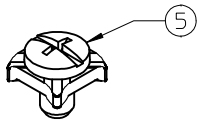


10 9 8 7 6 5 4 3 2 1

REF. -49 OPT. SCREW  
(WHERE APPLICABLE)



REF. -50 OPT. SCREW  
(WHERE APPLICABLE)



PART NUMBER LEGEND

71-7-XX-XX-X

SERIES

TERMINAL STYLE

CIRCUIT QTY (2 TO 26)

OPTION (-49 BRASS,PHIL/SLOT SCREW)  
(-50 CLAMP WASHER,PHIL/SLOT SCREW)  
(-C NO MOUNTING ENDS)

TERMINAL LENGTH

-55=.54

-75=.75

-81=.81

NOTES.

1. MATERIAL: SEE TABLE
2. FINISHES: SEE TABLE
3. PRODUCT SPECIFICATION: PS-38710-001
4. 'XX' REFERS TO NUMBER OF CIRCUITS.
5. ASSEMBLY IS RoHS COMPLIANT.

| ITEM | QTY | DESCRIPTION                                | MATERIAL        | FINISH |
|------|-----|--|-----------------|--------|
| 5    | XX  | #6-32 PH/SLOTTED SCREW W/WSHR (OPTION -50) | STEEL           | ZINC   |
| 4    | XX  | #6-32 PH/SLOTTED SCREW (OPTION -49)        | BRASS           | NICKEL |
| 3    | XX  | #6-32 PH/SLOTTED SCREW (STANDARD)          | STEEL           | ZINC   |
| 2    | XX  | TERMINAL, WW SN-KT                         | BRASS           | TIN    |
| 1    | 1   | INSULATOR                                  | POLYESTER (PBT) | BLACK  |

|          |                           |                 |
|----------|---------------------------|-----------------|
| RELEASED | EC NO: IPG2016-0008       | QUALITY SYMBOLS |
|          | DRWN: SVMURTHY 2015/06/30 | ▽/0             |
|          | CHKD: RSTONE 2015/06/30   | ▽/0             |
|          | APPR: JFMURPHY 2016/07/11 | ▽/0             |

| GENERAL TOLERANCES (UNLESS SPECIFIED)                |        |
|--|--------|
| mm   | INCH   |
| 4 PLACES ± ---                                       | ± ---  |
| 3 PLACES ± ---                                       | ± .005 |
| 2 PLACES ± 0.13                                      | ± .01  |
| 1 PLACE ± 0.3  | ± ---  |
| 0 PLACE ± ---  | ± ---  |
| ANGULAR ± 2 °  |        |
| DRAFT WHERE APPLICABLE MUST REMAIN WITHIN DIMENSIONS |        |

| DIMENSION STYLE INCH ONLY |            |
|---------------------------|------------|
| DRAWN BY                  | DATE       |
| SVMURTHY                  | 2015/06/30 |
| CHECKED BY                | DATE       |
| RSTONE                    | 2015/06/30 |
| APPROVED BY               | DATE       |
| JFMURPHY                  | 2016/07/11 |
| MATERIAL NO.              |            |
| SEE SHEET 2               |            |

|  |                   |                        |
|--|-------------------|------------------------|
| SCALE 2:1                              | DESIGN UNITS INCH | THIRD ANGLE PROJECTION |
| TITLE                                  |                   |                        |
| 9.53MM [.375"] SR BTS WIRE WRAP NO MTG |                   |                        |
| DOCUMENT NO.                           |                   | SHEET NO.              |
| SD-38710-0306                          |                   | 1 OF 2                 |

| # OF<br>CIRCUITS<br>"XX" | DIM. "A" |     | DIM. "B" |        |
|--------------------------|----------|-----|----------|--------|
|                          | in       | mm  | in       | mm     |
| 02                       | .83      | 21  | .375     | 9.53   |
| 03                       | 1.21     | 31  | .750     | 19.05  |
| 04                       | 1.58     | 40  | 1.125    | 28.58  |
| 05                       | 1.96     | 50  | 1.500    | 38.10  |
| 06                       | 2.33     | 59  | 1.875    | 47.63  |
| 07                       | 2.71     | 69  | 2.250    | 57.15  |
| 08                       | 3.08     | 78  | 2.625    | 66.68  |
| 09                       | 3.46     | 88  | 3.000    | 76.20  |
| 10                       | 3.83     | 97  | 3.375    | 85.73  |
| 11                       | 4.21     | 107 | 3.750    | 95.25  |
| 12                       | 4.58     | 116 | 4.125    | 104.78 |
| 13                       | 4.96     | 126 | 4.500    | 114.30 |
| 14                       | 5.33     | 135 | 4.875    | 123.83 |
| 15                       | 5.71     | 145 | 5.250    | 133.35 |
| 16                       | 6.08     | 154 | 5.625    | 142.88 |
| 17                       | 6.46     | 164 | 6.000    | 152.40 |
| 18                       | 6.83     | 173 | 6.375    | 161.93 |
| 19                       | 7.21     | 183 | 6.750    | 171.45 |
| 20                       | 7.58     | 193 | 7.125    | 180.98 |
| 21                       | 7.96     | 202 | 7.500    | 190.50 |
| 22                       | 8.33     | 212 | 7.875    | 200.03 |
| 23                       | 8.71     | 221 | 8.250    | 209.55 |
| 24                       | 9.08     | 231 | 8.625    | 219.08 |
| 25                       | 9.46     | 240 | 9.000    | 228.60 |
| 26                       | 9.83     | 250 | 9.375    | 238.13 |

|   |                      |                     |  |                              |                        |  |                        |  |  |
|---|----------------------|---------------------|--|------------------------------|------------------------|--|------------------------|--|--|
| RELEASED<br>EC NO: IPG2016-0008<br>DRAWN: SVMURTHY 2015/06/30<br>CHKD: RSTONE 2015/06/30<br>APPR: JFMURPHY 2016/07/11 | DESCRIPTION<br>REV A | QUALITY SYMBOLS     | GENERAL TOLERANCES (UNLESS SPECIFIED)                | DIMENSION STYLE<br>INCH ONLY | SCALE<br>2:1           | DESIGN UNITS<br>INCH   | THIRD ANGLE PROJECTION |  |  |
|   |                      | $\nabla F/0$        | 4 PLACES   | mm INCH                      | DRAWN BY DATE          | TITLE<br>9.53MM [.375"] SR BTS WIRE WRAP NO MTG  |                        |  |  |
|   |                      | $\nabla F/0$        | 3 PLACES   | $\pm$ --- $\pm$ ---          | SVMURTHY 2015/06/30    |  |                        |  |  |
|   |                      | $\nabla F/0$        | 2 PLACES   | $\pm$ 0.13 $\pm$ .01         | CHECKED BY DATE        | DOCUMENT NO. SD-38710-0306 SHEET NO. 2 OF 2  |                        |  |  |
| $\nabla F/0$  | 1 PLACE              | $\pm$ 0.3 $\pm$ --- | RSTONE 2015/06/30                                    |                              |                        |  |                        |  |  |
|   |                      |                     | 0 PLACE  | $\pm$ --- $\pm$ ---          | APPROVED BY DATE       | molex<br>THIS DRAWING CONTAINS INFORMATION THAT IS PROPRIETARY TO MOLEX INCORPORATED AND SHOULD NOT BE USED WITHOUT WRITTEN PERMISSION |                        |  |  |
|   |                      |                     | ANGULAR $\pm$ 2 °                                    |                              | JFMURPHY 2016/07/11    |  |                        |  |  |
|   |                      |                     | DRAFT WHERE APPLICABLE MUST REMAIN WITHIN DIMENSIONS |                              | MATERIAL NO. 387100306 |  |                        |  |  |