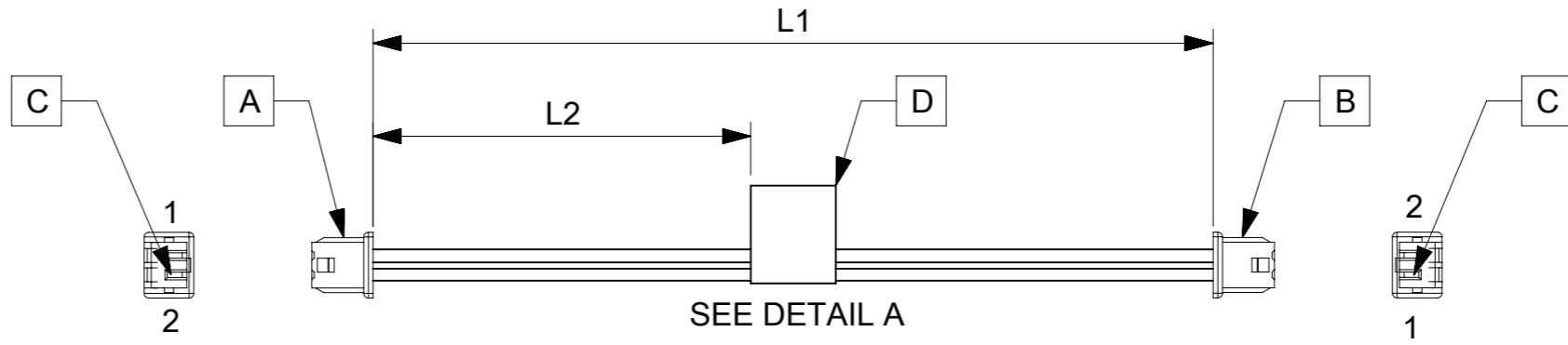


ITEM	PART#	DESCRIPTION	QTY	UOM
A,B	510210200	PicoBlade1.25 Rec Hsg 2P	2	PC
C	500588000	PicoBlade1.25 Crimp Rec Term Chain	4	PC
D	887804719	Blank label 12.7x35.5mm (WHT:12.7mm) HF	1	PC

FROM	TO	DESCRIPTION	COLOR
A1	B2	CABLE 28 AWG UL 1061 BLACK	BLACK
A2	B1	CABLE 28 AWG UL 1061 BLACK	BLACK

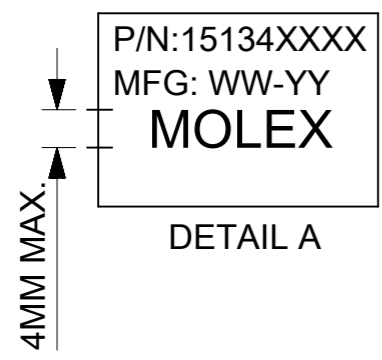


SEE DETAIL A

TABLE			
PART NUMBER	L1	L2	TITLE
151340200	50±6	20±5	Picoblade 2 Circuit 50MM
151340201	100±6	45±5	Picoblade 2 Circuit 100MM
151340202	150±8	70±5	Picoblade 2 Circuit 150MM
151340203	300±10	145±10	Picoblade 2 Circuit 300MM
151340205	450±10	220±10	Picoblade 2 Circuit 450MM
151340206	600±10	295±10	Picoblade 2 Circuit 600MM

- NOTES:
1. Cable assembly to be tested 100% for continuity and polarity.
 2. Label text must be 2mm max. In height with Arial font.
 3. Connector view shown is from mating side.
 4. Label must be wrapped in Flag type.
 5. Stick UL label on the outside carton.

REVISION			
DATE	REV	DESCRIPTION	CHANGER
26/07/2016	A	INITIAL RELEASE	DICK
26/04/2019	B	PROJECT TRANSFER FROM DG TO INDIA	ARAJU
24/06/2019	B1	LABEL CHANGE	ARAJU



THIS DRAWING CONTAINS INFORMATION THAT IS PROPRIETARY TO MOLEX ELECTRONIC TECHNOLOGIES, LLC AND SHOULD NOT BE USED WITHOUT WRITTEN PERMISSION											
QUALITY SYMBOLS	2019/06/11 2019/06/26 2019/06/26	GENERAL TOLERANCES (UNLESS SPECIFIED)	DIMENSION UNITS	SCALE							
			mm	NTS							
FA = 0	EC NO: 619691 DRWN: ARAJU CHK'D: RDESAI01 REVISION: 0 DATE: 2015/12/14	ANGULAR TOL ± °	DRWN BY	DATE	SEE TABLE						
FE = 0			W LXIE	2016/07/12							
FB = 0			CHK'D BY	DATE							
FC = 0			DRAFT WHERE APPLICABLE MUST REMAIN WITHIN DIMENSIONS	0 PLACES ±	APPR BY	DATE	PRODUCT CUSTOMER DRAWING				
FD = 0					YXZOU	2016/07/28	SERIES	MATERIAL NUMBER	CUSTOMER		
FE = 0					4 PLACES ±	DRAWING SIZE	THIRD ANGLE PROJECTION	201234	SEE TABLE	GENERAL MARKET	
FF = 0			A3		DOCUMENT NUMBER		DOC TYPE	DOC PART	SHEET NUMBER		
FG = 0					2012341354		PSD	000	1 OF 1		