

| PART NUMBER | REVISION | DESCRIPTION                      | FEED TYPE  |
|-------------|----------|----------------------------------|------------|
| 2151730-1   | E        | FINE CRIMP HEIGHT ADJUST         | MECHANICAL |
| 2151730-2   | E        | FINE CRIMP HEIGHT ADJUST         | PNEUMATIC  |
| 7-2151730-1 | E        | MECHANICAL AND CRIMP TOOLING KIT | MECHANICAL |
| 7-2151730-2 | E        | PNEUMATIC AND CRIMP TOOLING KIT  | PNEUMATIC  |
| 7-2151730-7 | A        | CRIMP TOOLING KIT                | -          |

ATLANTIC VERSION TERMINATOR INTERFACE ADAPTER



| APPLICATOR DATA |                |      |
|-----------------|----------------|------|
| CRIMP           | SIZE           | TYPE |
| WIRE            | 2.03 mm [.080] | F    |
| INSUL           | 4.25 mm [.167] | O    |

APPLICATOR INSTRUCTIONS  
408-35042

| TERMINAL DATA: TE TERMINAL         |           | TE CRIMP SPECIFICATION       |  |
|------------------------------------|-----------|------------------------------|--|
| TERMINAL NAME: 2.8mm BLADE, SEALED |           |                              |  |
| WIRE STRIP LENGTH                  |           | INSULATION DIAMETER RANGE    |  |
| 5.50-5.51 mm [.217-.217 IN]        |           | Ø1.20-2.70 mm [.047-.106 IN] |  |
| TERMINAL APPLICATION SPECIFICATION | 114-13013 |                              |  |

| TERMINALS APPLIED |             |           |              | SEAL INSULATION DIAMETER RANGE |
|-------------------|-------------|-----------|--------------|--------------------------------|
| TE TERMINAL       | TE TERMINAL | TE SEAL   | YAZAKI SEAL  |                                |
| 1326031-8         | 1326032-9   | 1949064-1 | 7158-3113-40 | 1.2-2.7 mm                     |
|                   |             | 1949064-2 | 7158-3112-70 | 1.2-2.7 mm                     |

| WIRE SIZE | CRIMP HEIGHT mm [INCH]     | CRIMP HEIGHT REFERENCE SETTING |
|-----------|----------------------------|--------------------------------|
| 18 AWG    | 1.37+/-0.05 [.054+/- .002] | 4.1                            |
| 1.00mm2   | 1.30+/-0.05 [.051+/- .002] | 4.9                            |
| 0.75mm2   | 1.22+/-0.05 [.048+/- .002] | 6.0                            |

- 1 RECOMMENDED SPARE PARTS
- 2 REFER TO SUPPLIED INSTRUCTION SHEET FOR CLEANING, LUBRICATION AND STORAGE OF APPLICATOR.
- 3 APPLY PART NUMBER 2-23419-6 LOCTITE TO THREADS OF ITEM 242.
- 4 CRIMP HEIGHT REFERENCE SETTING WAS THE SETTING USED WHEN THE APPLICATOR WAS QUALIFIED AT THE FACTORY. ADJUSTMENT MAY BE NECESSARY WHEN RUNNING APPLICATOR IN THE FIELD.
- 5 APPLY TORO-SEAL IN ALLEN SOCKET TO FILL HOLE AFTER FLAT HD HAS BEEN ADJUSTED TO CORRECT HEIGHT AT QUALIFICATION. APPLY #1-23419-5 LOC-TITE TO THREADS.
- 6 UNLESS SPECIFIED OTHERWISE TORQUE VALUES SHALL BE USED PER DOCUMENT, 101-35000.

**\*WARNING**  
ON INSTALLATION, SET WIRE DISC TO CRIMP HEIGHT REFERENCE SETTING FOR LARGEST WIRE SIZE. CRIMP HEIGHT REFERENCE SETTINGS GREATER THAN THE VALUE SHOWN MAY CAUSE DAMAGE TO THE CRIMP TOOLING, REFER TO THE INSTRUCTION SHEET FOR PROPER SETUP AND ADJUSTMENTS.

ATLANTIC VERSION  
Shown on sheets 1 of 4 & 2 of 4  
(Pacific version shown on sheets 3 of 4 & 4 of 4)

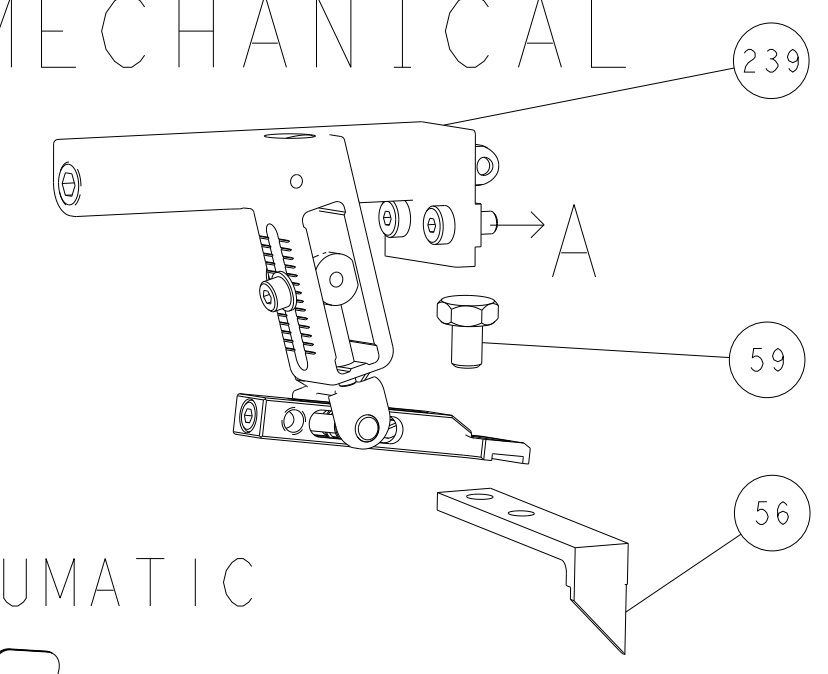
| LOC | DIST | REVISIONS |     |               |           |     |      |
|-----|------|-----------|-----|---------------|-----------|-----|------|
| A   | 66   | P         | LTN | DESCRIPTION   | DATE      | OWN | APVD |
|     |      | D         |     | ECR-15-016622 | 12NOV2015 | KH  | JT   |
|     |      | E         |     | ECR-19-014658 | 20SEP2019 | FZ  | TE   |
|     |      | E1        |     | ECR-20-002411 | 19FEB2020 | MZ  | YY   |
|     |      | E2        |     | ECR-21-006796 | 09JUL2021 | FJ  | YY   |

|   |     |     |     |     |             |                                     |     |
|---|-----|-----|-----|-----|-------------|-------------------------------------|-----|
| - | 1   | 1   | 1   | 1   | 2-455888-9  | SPACER, CRIMPER                     | 259 |
| - | 1   | -   | 1   | -   | 2119641-1   | FEED CAM, AIR FEED                  | 248 |
| - | 1   | 1   | 1   | 1   | 2119082-7   | CAM, SNAIL, INSULATION ADJUSTMENT   | 244 |
| - | 1   | 1   | 1   | 1   | 2079764-1   | WASHER, WAVE SPRING, CREST-TO-CREST | 243 |
| - | 1   | 1   | 1   | 1   | 2119083-1   | RETAINER, INSULATION DIAL           | 242 |
| - | 1   | 1   | 1   | 1   | 7-18023-7   | SCR, SKT HD CAP M3 X 4.0            | 241 |
| - | -   | 1   | -   | 1   | 2119580-1   | MECHANICAL FEED ASSEMBLY            | 239 |
| - | 1   | -   | 1   | -   | 2844940-1   | AIR FEED MODULE                     | 238 |
| - | REF | REF | REF | REF | 994970-2    | COUNTER, MAGNETIC                   | 164 |
| - | 1   | 1   | 1   | 1   | 318563-1    | GUARD, FRONT CHIP                   | 119 |
| - | 1   | 1   | 1   | 1   | 2844908-1   | SCREW, LOCKING                      | 99  |
| - | 1   | 1   | 1   | 1   | 2844907-1   | POST, LOCKING                       | 98  |
| - | 1   | 1   | 1   | 1   | 1-455888-7  | SPACER, CRIMPER                     | 82  |
| - | 1   | 1   | 1   | 1   | 985575-1    | SCR, FLT SKT HD CAP M3 X 6.0        | 81  |
| - | 1   | 1   | 1   | 1   | 224405-2    | DEPRESSOR, WIRE                     | 80  |
| - | 2   | 2   | 2   | 2   | 18024-6     | SCR, BTN SKT HD CAP (M4 X 8.0)      | 79  |
| - | 1   | 1   | 1   | 1   | 1803096-1   | EXTENSION PLATE                     | 78  |
| - | 1   | 1   | 1   | 1   | 1803607-3   | DOCUMENTATION PACKAGE               | 71  |
| - | 1   | 1   | 1   | 1   | 2119740-1   | TAG IDENTIFICATION                  | 67  |
| - | 2   | 2   | 2   | 2   | 2168078-1   | SCREW, DRIVE, RH, RoHS, 2 x .188    | 66  |
| - | 1   | 1   | 1   | 1   | 2168083-2   | SCR, SKT HD CAP, RoHS, M4 X 8.0     | 60  |
| - | 1   | 1   | 1   | 1   | 5-18022-5   | SCR, HEX HD CAP, M4 X 6.0           | 59  |
| - | 1   | 1   | 1   | 1   | 985575-3    | SCR, FLT SKT HD CAP M3 X 10.0       | 57  |
| - | 1   | 1   | 1   | 1   | 1338685-1   | PAWL, FEED                          | 56  |
| - | 4   | 4   | 4   | 4   | 2168083-3   | SCR, SKT HD CAP, RoHS, M4 X 12.0    | 54  |
| - | 2   | 2   | 2   | 2   | 1-2168083-0 | SCR, SKT HD CAP, RoHS, M4 X 10      | 53  |
| - | 1   | 1   | 1   | 1   | 5018030-1   | NUT, HEX, REG, RoHS, M3             | 52  |
| - | 1   | 1   | 1   | 1   | 811242-5    | BUMPER, HOLD DOWN                   | 51  |
| - | 1   | 1   | 1   | 1   | 690753-2    | SPACER, TONKER                      | 50  |
| - | 1   | 2   | 1   | 2   | 18023-9     | SCR, SKT HD CAP M4 X 6.0            | 49  |
| - | -   | 1   | -   | 1   | 2119652-1   | FEED CAM, PRE FEED                  | 48  |
| - | -   | 1   | -   | 1   | 2119653-1   | FEED CAM, POST FEED                 | 47  |
| - | 1   | 1   | 1   | 1   | 1803583-9   | APPLICATOR BASIC ASSEMBLY, SF       | 46  |
| - | 1   | 1   | 1   | 1   | 1803515-2   | RAM ASSEMBLY, SF ATLANTIC           | 44  |
| - | 1   | 1   | 1   | 1   | 1803602-2   | SCR, BHSC, RoHS (M8 X 40)           | 41  |
| - | 1   | 1   | 1   | 1   | 2-1752356-0 | SUPPORT, TERMINAL                   | 34  |
| - | 2   | 2   | 2   | 2   | 2079383-5   | SCR, BHSC, RoHS (M4 X 20)           | 33  |
| - | 2   | 2   | 2   | 2   | 1-2844962-8 | SPACER, CYLINDRICAL, STRIP GUIDE    | 30  |
| - | 1   | 1   | 1   | 1   | 2844992-4   | ASSEMBLY, STRIP GUIDE               | 29  |
| - | 1   | 1   | 1   | 1   | 455888-3    | SPACER, CRIMPER                     | 28  |
| - | 1   | 1   | 1   | 1   | 240792-2    | DRAG, TERMINAL                      | 25  |
| - | 1   | 1   | 1   | 1   | 1320928-6   | STRIP GUIDE                         | 24  |
| - | 1   | 1   | 1   | 1   | 2168083-2   | SCR, SKT HD CAP, RoHS, M4 X 8.0     | 21  |
| - | 1   | 1   | 1   | 1   | 1-18028-2   | WASHER, FLAT, REG M4                | 20  |
| - | 1   | 1   | 1   | 1   | 2119533-2   | STRIPPER, SIDE FEED                 | 19  |
| - | 1   | 1   | 1   | 1   | 2119806-1   | INSERT, SHEAR                       | 13  |
| - | 1   | 1   | 1   | 1   | 3-22280-3   | SPRING, COMPRESSION                 | 12  |
| - | 1   | 1   | 1   | 1   | 1-356885-4  | STOP, SHEAR                         | 11  |
| - | 1   | 1   | 1   | 1   | 2119805-1   | SHEAR HOLDER, FRONT                 | 10  |
| - | 1   | 1   | 1   | 1   | 318707-1    | FLOATING SHEAR, FRONT               | 9   |
| - | 1   | 2   | 2   | 1   | 1-1633927-6 | ANVIL, COMBINATION                  | 8   |
| - | -   | -   | -   | -   | -           | -                                   | 7   |
| - | -   | -   | -   | -   | -           | -                                   | 6   |
| - | 1   | 1   | 1   | 1   | 2119781-1   | DEPRESSOR, SHEAR                    | 5   |
| - | 1   | 1   | 1   | 1   | 2-238011-1  | BLOCK, CRIMPER SPACER               | 4   |
| - | 1   | 2   | 2   | 1   | 6-2119784-2 | CRIMPER, INSULATION O PREMIUM       | 3   |
| - | 1   | 1   | 1   | 1   | 1-455888-9  | SPACER, CRIMPER                     | 2   |
| - | 1   | 2   | 2   | 1   | 1-856313-7  | CRIMPER, WIRE                       | 1   |

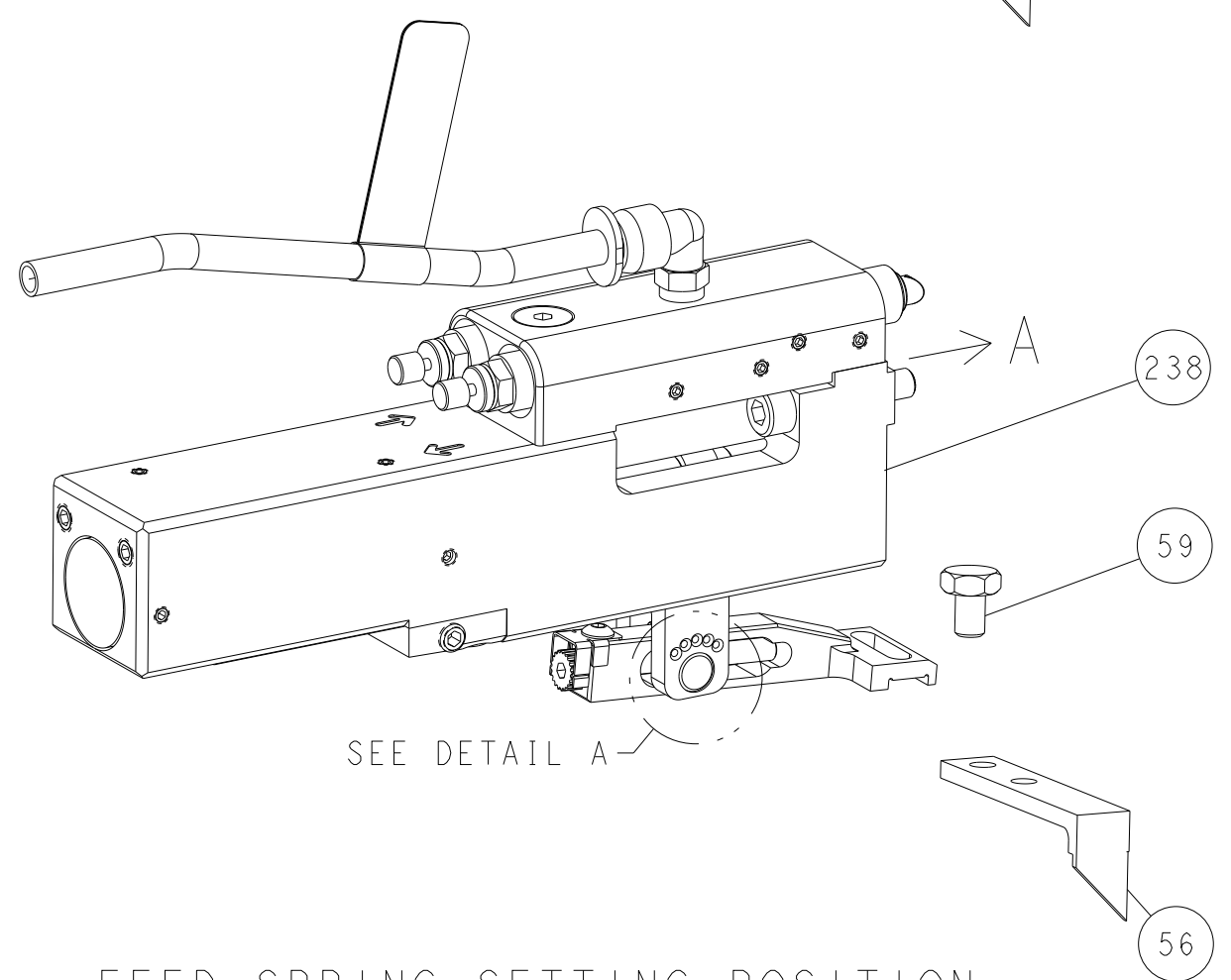
| DIMENSIONS:                            |         | TOLERANCES UNLESS OTHERWISE SPECIFIED: |         | DRAWING NO |         | RESTRICTED TO |          |
|--|---------|--|---------|------------|---------|---------------|----------|
| mm                                     | 0 PLC ± | 1 PLC ±                                | 2 PLC ± | 3 PLC ±    | 4 PLC ± | ANGLES ±      | FINISH ± |
| MATERIAL                               |         |  |         | WEIGHT     | SCALE   | SHEET         | REV      |
| Customer Accessible Production Drawing |         |  |         | 00779      | 1:2     | 1 of 4        | E2       |

| LOC | DIST | REVISIONS |     |             |      |     |      |
|-----|------|-----------|-----|-------------|------|-----|------|
|     |      | P         | LTN | DESCRIPTION | DATE | OWN | APVD |
| A   | 66   | -         | -   | SEE SHEET 1 | -    | -   | -    |

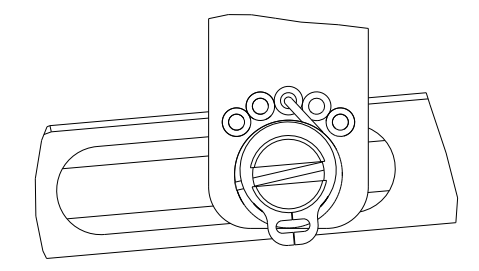
### FEED TYPE MECHANICAL



### PNEUMATIC

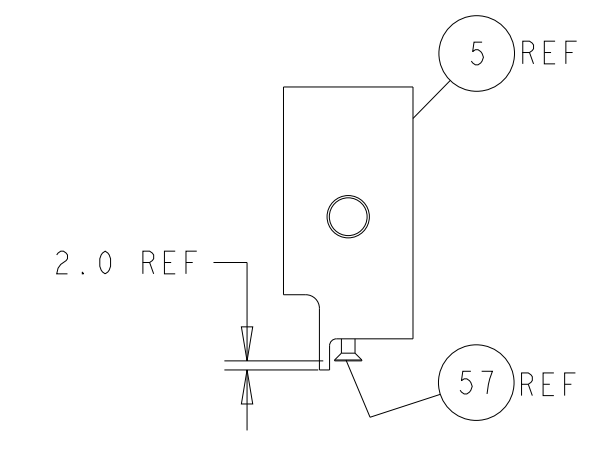
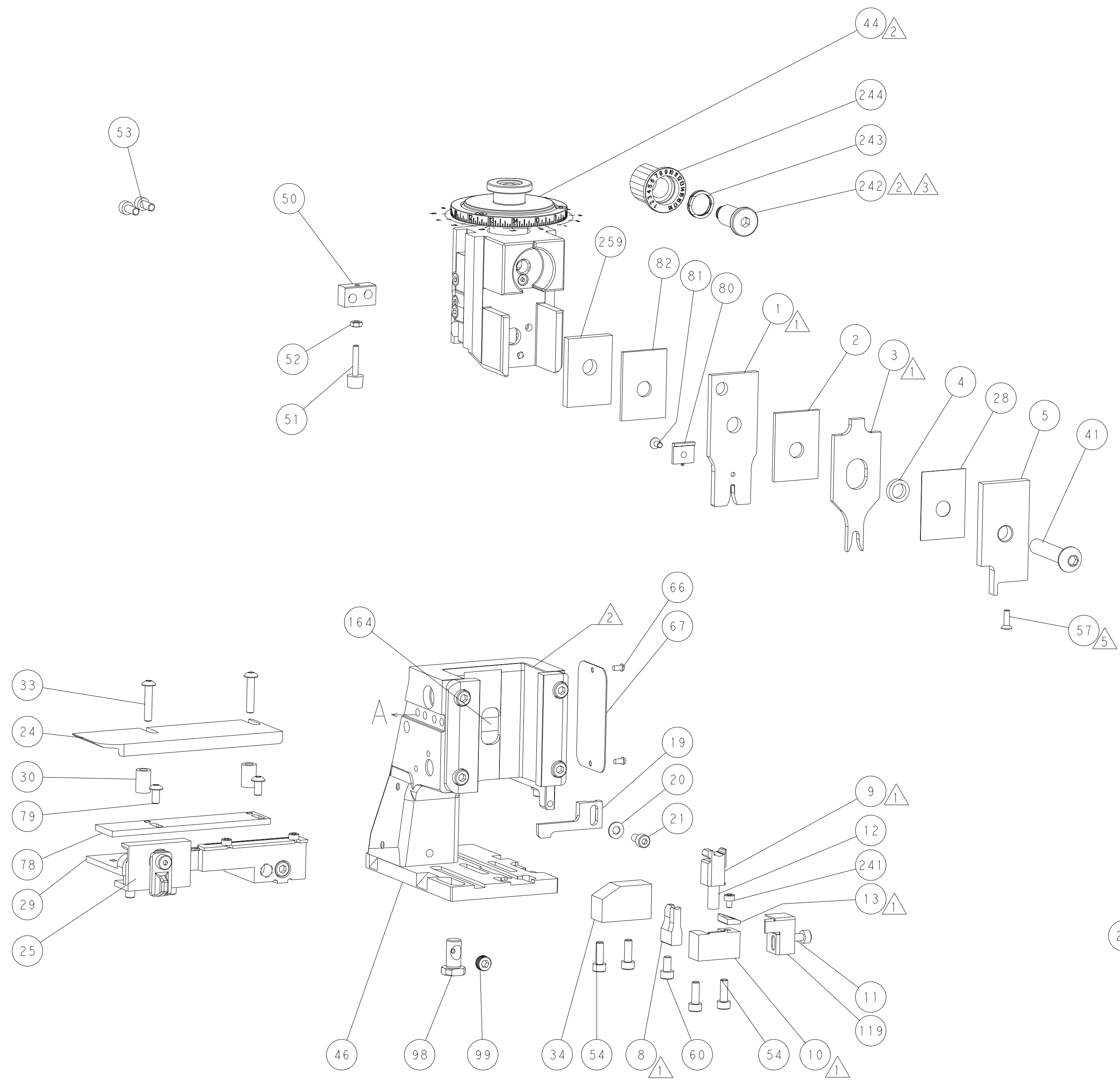
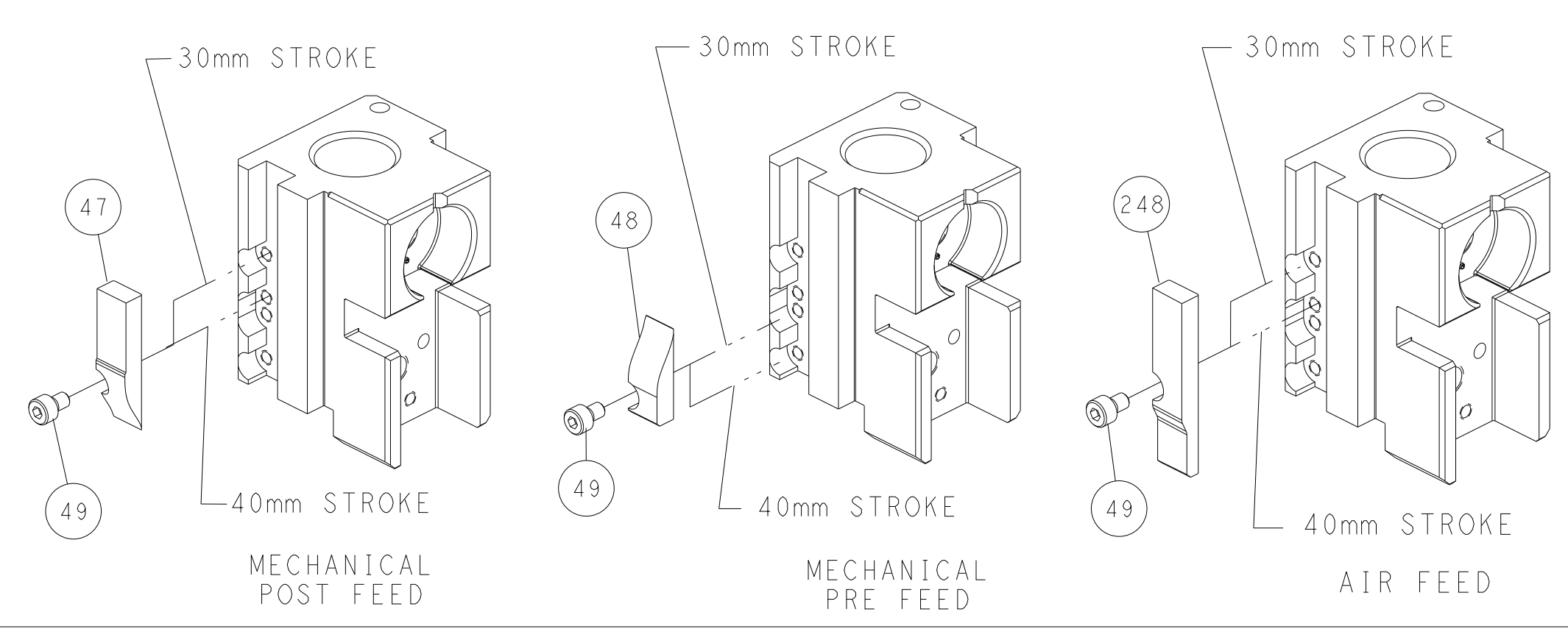


### FEED SPRING SETTING POSITION (SHOWN FROM REAR SIDE)

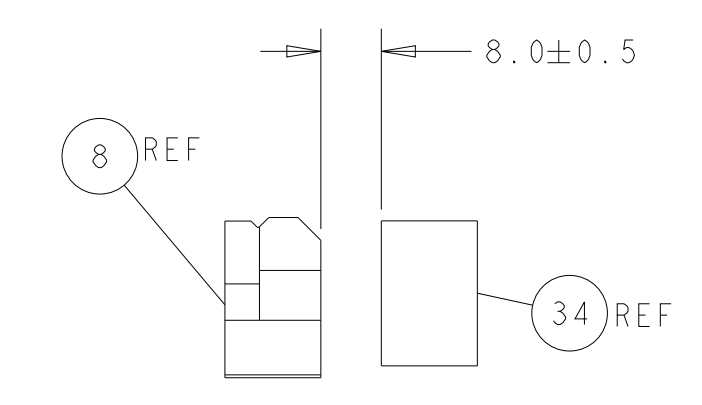


DETAIL A

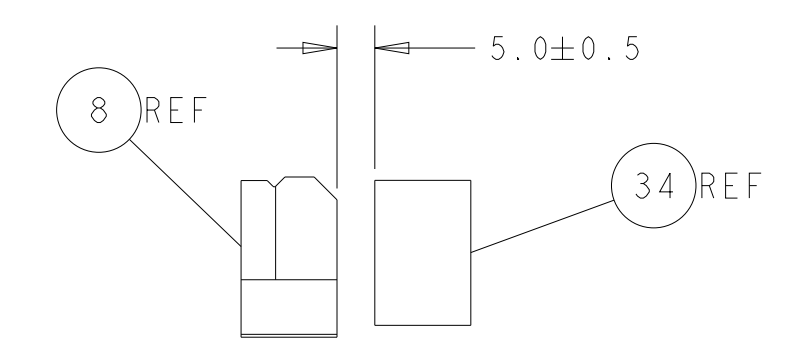
### CAM POSITIONS



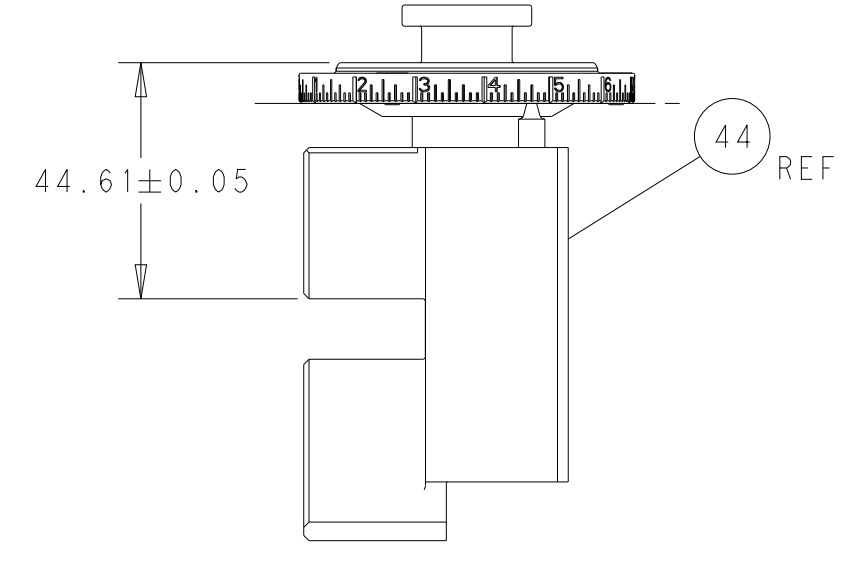
SHEAR DEPRESSOR DETAIL



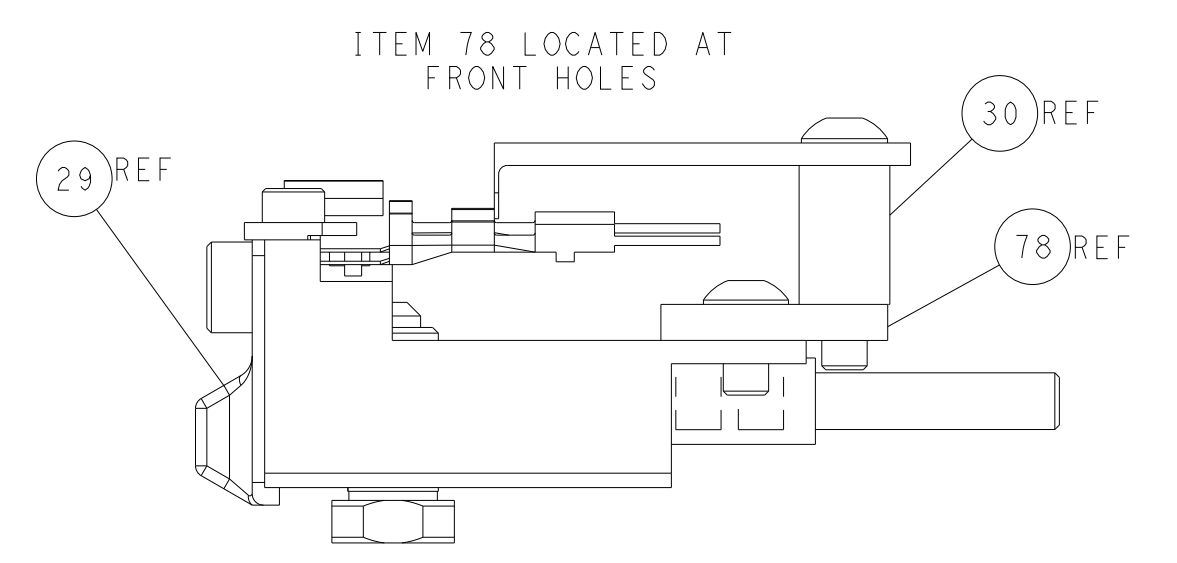
TERMINAL SUPPORT LOCATION FOR BLADE TERMINAL P/N 1326031-8



TERMINAL SUPPORT LOCATION FOR RECEPTACLE TERMINAL P/N 1326032-9



RAM SET-UP



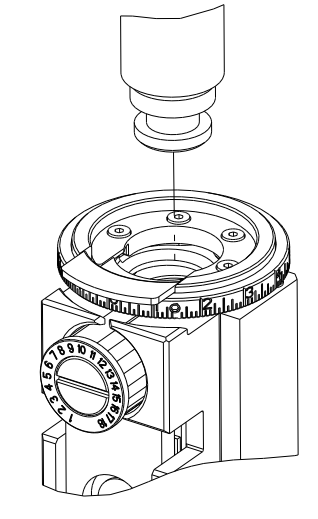
FEED TRACK POSITION GUIDE BY WIRE BARREL

**ATLANTIC VERSION**  
 Shown on sheets 1 of 4 & 2 of 4  
 (Pacific version shown on sheets 3 of 4 & 4 of 4)

|  |  |  |  |
|--|--|--|--|
| <small>THIS DRAWING IS A CONTROLLED DOCUMENT FOR TYCO ELECTRONICS CORPORATION. IT IS THE PROPERTY OF TYCO ELECTRONICS CORPORATION AND IS NOT TO BE REPRODUCED OR TRANSMITTED IN ANY FORM OR BY ANY MEANS, ELECTRONIC OR MECHANICAL, INCLUDING PHOTOCOPYING, RECORDING, OR BY ANY INFORMATION STORAGE AND RETRIEVAL SYSTEM, WITHOUT THE WRITTEN PERMISSION OF TYCO ELECTRONICS CORPORATION.</small> |  | DWN Y. YIN 25JUL2012<br>CHK G. BAILEY 25JUL2012<br>APVD S. XI 25JUL2012  | TE Connectivity<br>Harrisburg, PA 17105-3608   |
| DIMENSIONS: mm<br>TOLERANCES UNLESS OTHERWISE SPECIFIED:<br>0 PLC ±<br>1 PLC ±<br>2 PLC ±<br>3 PLC ±<br>4 PLC ±<br>ANGLES FINISH   |  | NAME Ocean Side Feed Applicator<br>PRODUCT SPEC<br>APPLICATION SPEC<br>SIZE CAGE CODE DRAWING NO. A1 00779 ©=2151730<br>WEIGHT<br>Customer Accessible Production Drawing | RESTRICTED TO<br>SCALE 1:1 SHEET 2 OF 4 REV E2 |

| PART NUMBER | REVISION | DESCRIPTION              | FEED TYPE  |
|-------------|----------|--------------------------|------------|
| 2-2151730-1 | E        | FINE CRIMP HEIGHT ADJUST | MECHANICAL |
| 2-2151730-2 | E        | FINE CRIMP HEIGHT ADJUST | PNEUMATIC  |
| 7-2151730-7 | A        | CRIMP TOOLING KIT        | -          |

PACIFIC VERSION TERMINATOR  
 INTERFACE ADAPTER



| APPLICATOR DATA                      |                  |      |
|--------------------------------------|------------------|------|
| CRIMP                                | SIZE             | TYPE |
| WIRE                                 | 2.03 mm [ .080 ] | F    |
| INSUL                                | 4.25 mm [ 1.67 ] | O    |
| APPLICATOR INSTRUCTIONS<br>408-35042 |                  |      |

| TERMINAL DATA: TE TERMINAL         |                                | TE CRIMP SPECIFICATION |   |
|------------------------------------|--------------------------------|------------------------|---|
| TERMINAL NAME: 2.8mm BLADE, SEALED |                                |                        |   |
| WIRE STRIP LENGTH                  | INSULATION DIAMETER RANGE      |                        |   |
| 5.50-5.51 mm [ .217-.217 IN ]      | Ø1.20-2.70 mm [ .047-.106 IN ] |                        |   |
| TERMINAL APPLICATION SPECIFICATION | 114-13013                      | -                      | - |

| TERMINALS APPLIED |             |            |              | SEAL INSULATION DIAMETER RANGE |
|-------------------|-------------|------------|--------------|--------------------------------|
| TE TERMINAL       | TE TERMINAL | TE SEAL PN | YAZAKI PN    |                                |
| 1326031-8         | 1326032-9   | 1949064-1  | 7158-3113-40 | 1.2-2.7 mm                     |
|                   |             | 1949064-2  | 7158-3112-70 | 1.2-2.7 mm                     |

| WIRE SIZE | CRIMP HEIGHT mm [INCH]       | CRIMP HEIGHT REFERENCE SETTING |
|-----------|------------------------------|--------------------------------|
| 18 AWG    | 1.37+/-0.05 [ .054+/- .002 ] | 4.1                            |
| 1.00mm2   | 1.30+/-0.05 [ .051+/- .002 ] | 4.9                            |
| 0.75mm2   | 1.22+/-0.05 [ .048+/- .002 ] | 6.0                            |



- 1 RECOMMENDED SPARE PARTS
  - 2 REFER TO SUPPLIED INSTRUCTION SHEET FOR CLEANING, LUBRICATION AND STORAGE OF APPLICATOR.
  - 3 APPLY PART NUMBER 2-23419-6 LOCTITE TO THREADS OF ITEM 242.
  - 4 CRIMP HEIGHT REFERENCE SETTING WAS THE SETTING USED WHEN THE APPLICATOR WAS QUALIFIED AT THE FACTORY. ADJUSTMENT MAY BE NECESSARY WHEN RUNNING APPLICATOR IN THE FIELD.
  - 5 APPLY TORQ-SEAL IN ALLEN SOCKET TO FILL HOLE AFTER FLAT HD HAS BEEN ADJUSTED TO CORRECT HEIGHT AT QUALIFICATION. APPLY #1-23419-5 LOC-TITE TO THREADS.
6. UNLESS SPECIFIED OTHERWISE TORQUE VALUES SHALL BE USED PER DOCUMENT, 101-35000.

| ENTRY LEVEL APPLICATOR |             | ITEM SUBSTITUTION LIST |                     |                        |
|------------------------|-------------|------------------------|---------------------|------------------------|
| PART NUMBER            | SAME AS     | ITEM                   | ITEM DESCRIPTION    | SUBSTITUTE PART NUMBER |
| 8-2151730-1            | 2151730-1   | 1                      | WIRE CRIMPER        | 1-2370389-7            |
| 8-2151730-2            | 2151730-2   | 3                      | INSULATION CRIMPER  | 6-1803604-2            |
| 9-2151730-1            | 2-2151730-1 | 46                     | BASIC SUB -ASSEMBLY | 1803940-9              |
| 9-2151730-2            | 2-2151730-2 | 141                    | BASIC SUB -ASSEMBLY | 1-1803940-0            |
|                        |             |                        | LUBRICATOR          | DELETE                 |

**\*WARNING**  
 ON INSTALLATION, SET WIRE DISC TO CRIMP HEIGHT REFERENCE SETTING FOR LARGEST WIRE SIZE. CRIMP HEIGHT REFERENCE SETTINGS GREATER THAN THE VALUE SHOWN MAY CAUSE DAMAGE TO THE CRIMP TOOLING, REFER TO THE INSTRUCTION SHEET FOR PROPER SETUP AND ADJUSTMENTS.

**PACIFIC VERSION**  
 Shown on sheets 3 of 4 & 4 of 4  
 (Atlantic version shown on sheets 1 of 4 & 2 of 4)

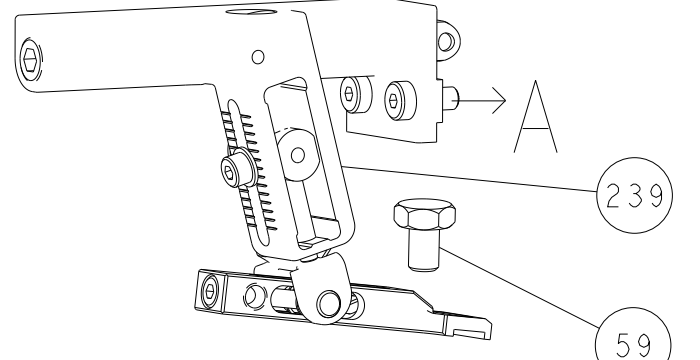
| LOC | DIST | REVISIONS |     |             |      |     |      |
|-----|------|-----------|-----|-------------|------|-----|------|
| A   | 66   | P         | LTN | DESCRIPTION | DATE | OWN | APVD |
|     |      | -         |     | SEE SHEET 1 |      |     |      |

|   |     |     |             |                                     |     |
|---|-----|-----|-------------|-------------------------------------|-----|
| - | 1   | 1   | 2-455888-9  | SPACER, CRIMPER                     | 259 |
| - | 1   | 1   | 2119082-7   | CAM, SNAIL, INSULATION ADJUSTMENT   | 244 |
| - | 1   | 1   | 2079764-1   | WASHER, WAVE SPRING, CREST-TO-CREST | 243 |
| - | 1   | 1   | 2119083-1   | RETAINER, INSULATION DIAL           | 242 |
| - | 1   | 1   | 7-18023-7   | SCR, SKT HD CAP M3 X 4.0            | 241 |
| - | -   | 1   | 2119580-1   | MECHANICAL FEED ASSEMBLY            | 239 |
| - | 1   | -   | 2844940-1   | AIR FEED MODULE                     | 238 |
| - | REF | REF | 994970-2    | COUNTER, MAGNETIC                   | 164 |
| - | 1   | -   | 2119641-2   | FEED CAM, AIR FEED                  | 151 |
| - | 1   | 1   | 2168083-8   | SCR, SKT HD CAP, RoHS, M4 X 16      | 144 |
| - | 4   | 4   | 2168083-9   | SCR, SKT HD CAP, RoHS, M4 X 20      | 143 |
| - | -   | 1   | 2119653-2   | FEED CAM, POST FEED                 | 142 |
| - | 1   | 1   | 1-1803583-0 | APPLICATOR BASIC ASSEMBLY, SF       | 141 |
| - | 1   | 1   | 1803516-2   | RAM ASSEMBLY, SF PACIFIC            | 140 |
| - | 1   | 1   | 318563-1    | GUARD, FRONT CHIP                   | 119 |
| - | 1   | 1   | 2844908-1   | SCREW, LOCKING                      | 99  |
| - | 1   | 1   | 2844907-1   | POST, LOCKING                       | 98  |
| - | 1   | 1   | 1-455888-7  | SPACER, CRIMPER                     | 82  |
| - | 1   | 1   | 985575-1    | SCR, FLT SKT HD CAP M3 X 6.0        | 81  |
| - | 1   | 1   | 224405-2    | DEPRESSOR, WIRE                     | 80  |
| - | 2   | 2   | 18024-6     | SCR, BTN SKT HD CAP (M4 X 8.0)      | 79  |
| - | 1   | 1   | 1803096-1   | EXTENSION PLATE                     | 78  |
| - | 1   | 1   | 1803607-3   | DOCUMENTATION PACKAGE               | 71  |
| - | 1   | 1   | 2119740-1   | TAG, IDENTIFICATION                 | 67  |
| - | 2   | 2   | 2168078-1   | SCREW, DRIVE, RH, RoHS, 2 x .188    | 66  |
| - | 1   | 1   | 5-18022-5   | SCR, HEX HD CAP, M4 X 6.0           | 59  |
| - | 1   | 1   | 985575-3    | SCR, FLT SKT HD CAP M3 X 10.0       | 57  |
| - | 1   | 1   | 1338685-1   | PAWL, FEED                          | 56  |
| - | 2   | 2   | 1-2168083-0 | SCR, SKT HD CAP, RoHS, M4 X 10      | 53  |
| - | 1   | 1   | 5018030-1   | NUT, HEX, REG, RoHS, M3             | 52  |
| - | 1   | 1   | 811242-5    | BUMPER, HOLD DOWN                   | 51  |
| - | 1   | 1   | 690753-2    | SPACER, TONKER                      | 50  |
| - | 1   | 2   | 18023-9     | SCR, SKT HD CAP M4 X 6.0            | 49  |
| - | -   | 1   | 2119652-1   | FEED CAM, PRE FEED                  | 48  |
| - | 1   | 1   | 1803602-2   | SCR, BHSC, RoHS (M8 X 40)           | 41  |
| - | 1   | 1   | 2-1752356-0 | SUPPORT, TERMINAL                   | 34  |
| - | 2   | 2   | 2079383-5   | SCR, BHSC, RoHS (M4 X 20)           | 33  |
| - | 2   | 2   | 1-2844962-8 | SPACER, CYLINDRICAL, STRIP GUIDE    | 30  |
| - | 1   | 1   | 2844992-4   | ASSEMBLY, STRIP GUIDE               | 29  |
| - | 1   | 1   | 455888-3    | SPACER, CRIMPER                     | 28  |
| - | 1   | 1   | 240792-2    | DRAG, TERMINAL                      | 25  |
| - | 1   | 1   | 1320928-6   | STRIP GUIDE                         | 24  |
| - | 1   | 1   | 2168083-2   | SCR, SKT HD CAP, RoHS, M4 X 8.0     | 21  |
| - | 1   | 1   | 1-18028-2   | WASHER, FLAT, REG M4                | 20  |
| - | 1   | 1   | 2119533-2   | STRIPPER, SIDE FEED                 | 19  |
| - | 1   | 1   | 2119806-1   | INSERT, SHEAR                       | 13  |
| - | 1   | 1   | 3-22280-3   | SPRING, COMPRESSION                 | 12  |
| - | 1   | 1   | 1-356885-4  | STOP, SHEAR                         | 11  |
| - | 1   | 1   | 2119805-1   | SHEAR HOLDER, FRONT                 | 10  |
| - | 1   | 1   | 318707-1    | FLOATING SHEAR, FRONT               | 9   |
| - | 1   | 1   | 1-1633927-6 | ANVIL, COMBINATION                  | 8   |
| - | -   | -   | -           | -                                   | 7   |
| - | -   | -   | -           | -                                   | 6   |
| - | 1   | 1   | 2119781-1   | DEPRESSOR, SHEAR                    | 5   |
| - | 1   | 1   | 2-238011-1  | BLOCK, CRIMPER SPACER               | 4   |
| - | 1   | 1   | 6-2119784-2 | CRIMPER, INSULATION O PREMIUM       | 3   |
| - | 1   | 1   | 1-455888-9  | SPACER, CRIMPER                     | 2   |
| - | 1   | 1   | 1-856313-7  | CRIMPER, WIRE                       | 1   |

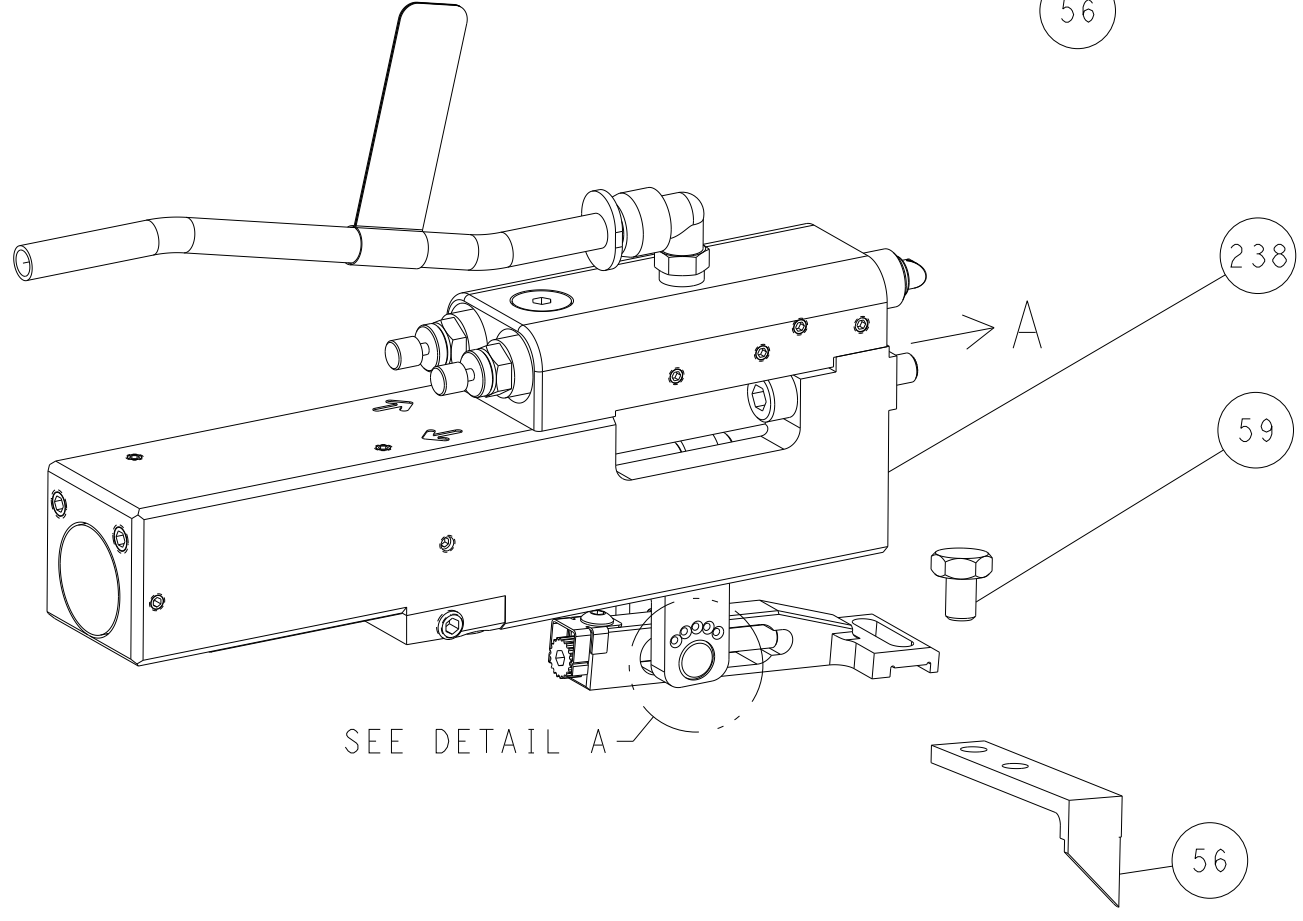
| DIMENSIONS: |         | TOLERANCES UNLESS OTHERWISE SPECIFIED: |         | DRAWN   |         | DATE    |         | NAME   |             |
|-------------|---------|--|---------|---------|---------|---------|---------|--|-------------|
| mm          | 0 PLC ± | 1 PLC ±                                | 2 PLC ± | 3 PLC ± | 4 PLC ± | 5 PLC ± | 6 PLC ± | Y. YIN                                       | 25 JUL 2012 |
|             | ANGLES  | FINISH                                 |         |         |         |         |         | G. BAILEY                                    | 25 JUL 2012 |
| MATERIAL    |         |  |         |         |         |         |         | TE Connectivity<br>Harrisburg, PA 17105-3608 |             |
|             |         |  |         |         |         |         |         | Ocean Side Feed<br>Applicator                |             |
|             |         |  |         |         |         |         |         | SIZE   | CAGE CODE   |
|             |         |  |         |         |         |         |         | A1   | 00779       |
|             |         |  |         |         |         |         |         | Customer Accessible Production Drawing       |             |
|             |         |  |         |         |         |         |         | SCALE  | 1:2         |
|             |         |  |         |         |         |         |         | SHEET  | 3 OF 4      |
|             |         |  |         |         |         |         |         | REV  | E2          |

| LOC | DIST | REVISIONS |     |             |      |     |      |
|-----|------|-----------|-----|-------------|------|-----|------|
|     |      | P         | LTN | DESCRIPTION | DATE | DWN | APVD |
| A   | 66   | -         | -   | SEE SHEET 1 | -    | -   | -    |

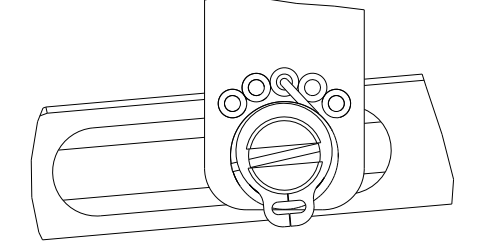
# FEED TYPE MECHANICAL



## PNEUMATIC

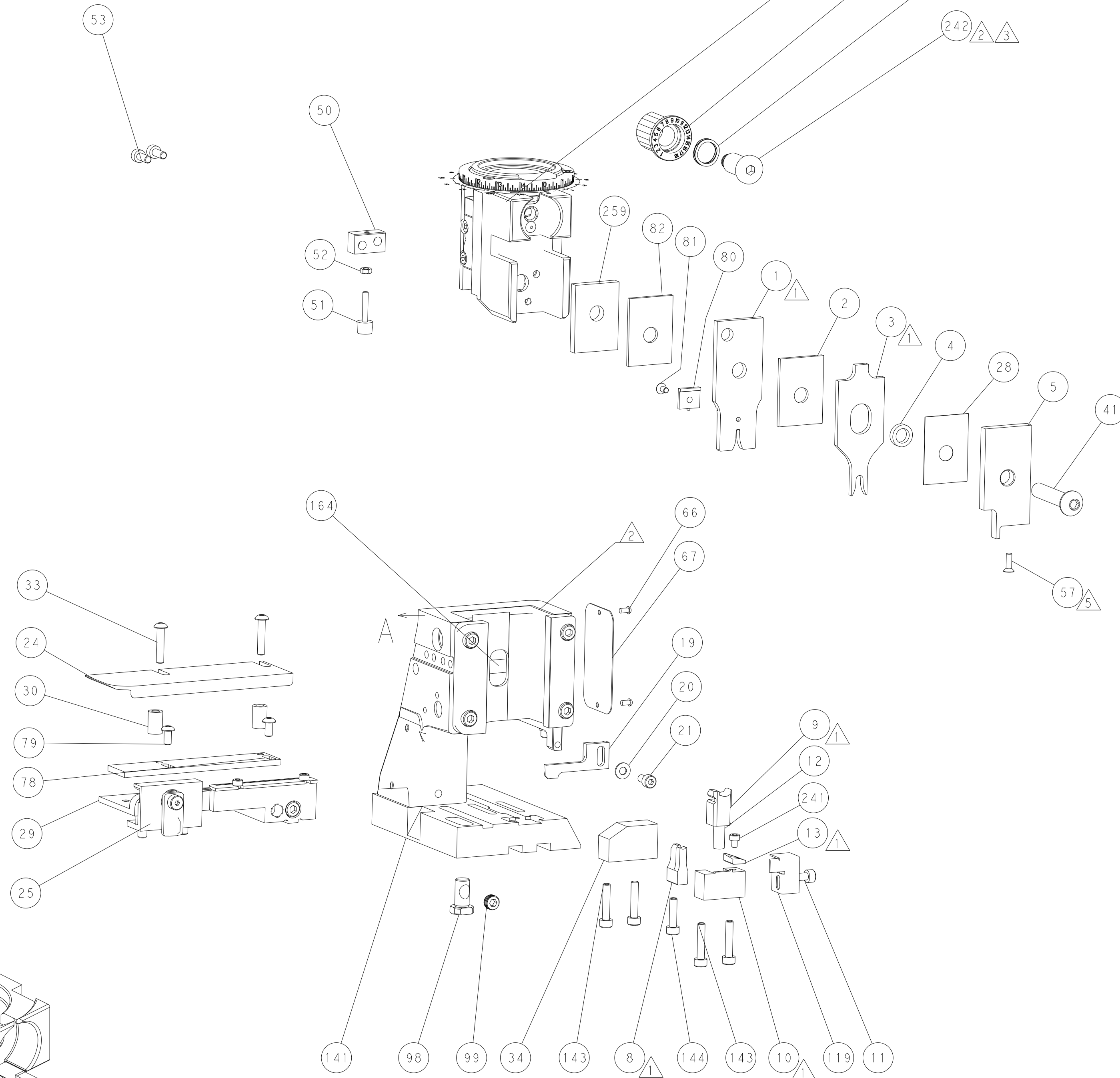
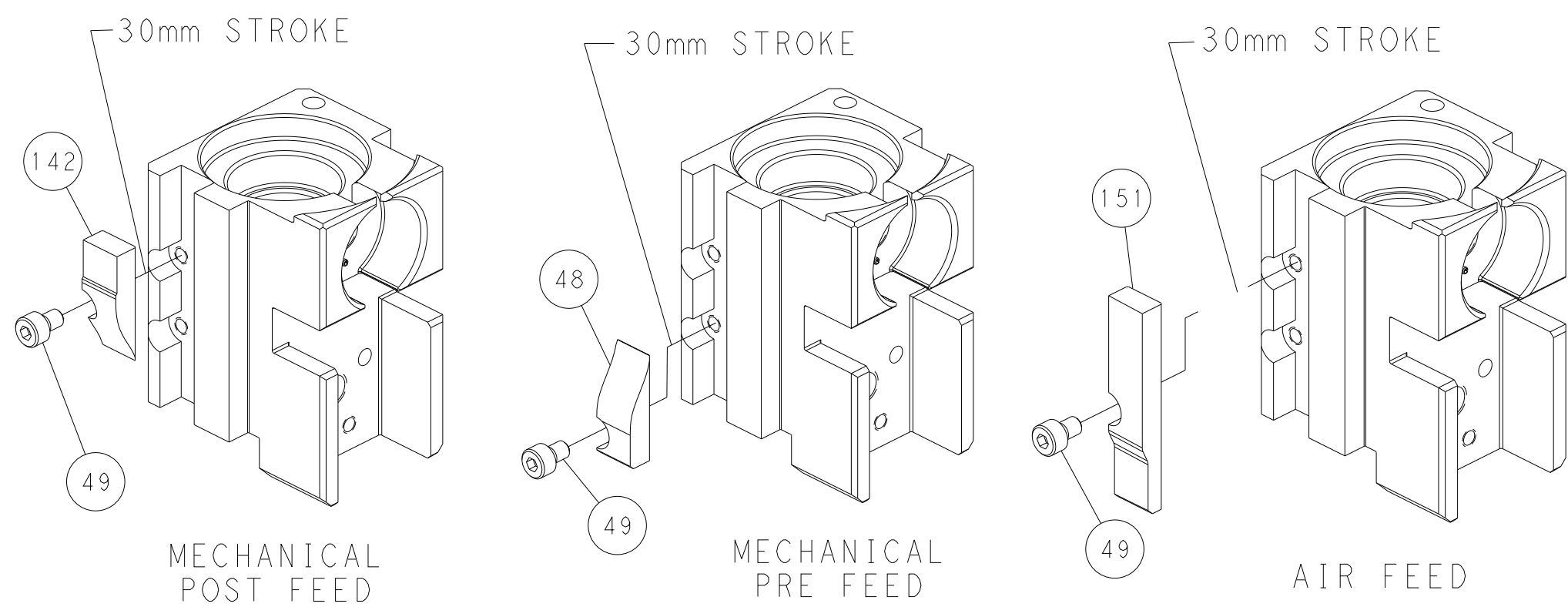


FEED SPRING SETTING POSITION (SHOWN FROM REAR SIDE)

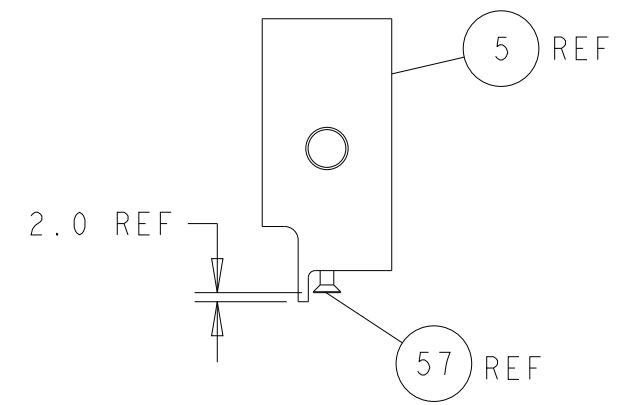


DETAIL A

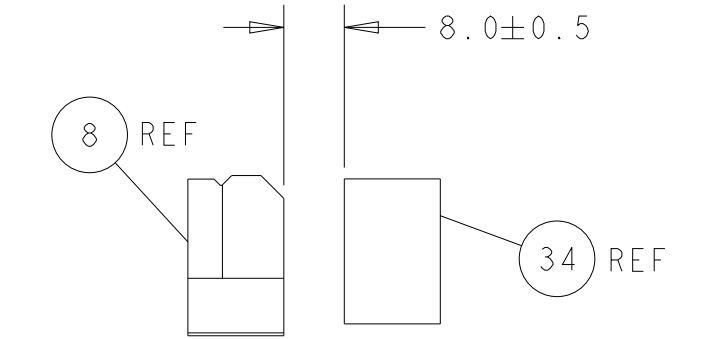
## CAM POSITIONS



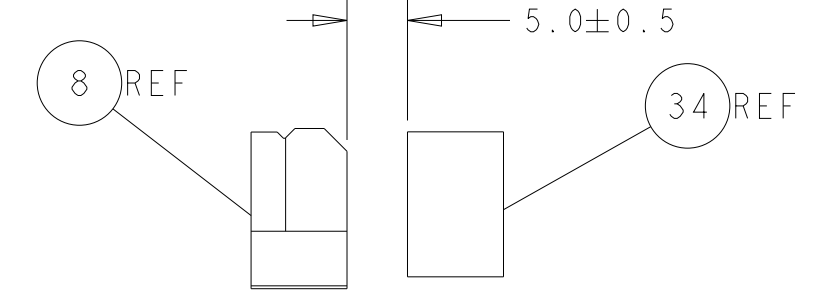
**PACIFIC VERSION**  
 Shown on sheets 3 of 4 & 4 of 4  
 (Atlantic version shown on sheets 1 of 4 & 2 of 4)



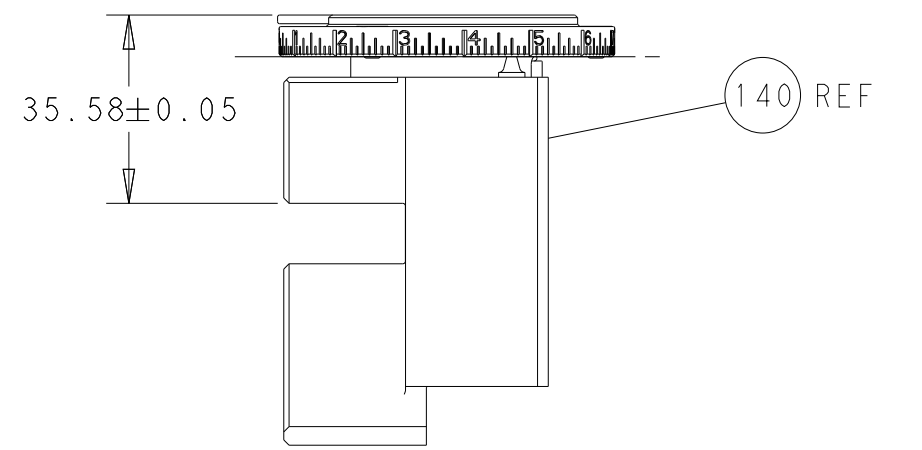
SHEAR DEPRESSOR DETAIL



TERMINAL SUPPORT LOCATION FOR BLADE TERMINAL P/N 1326031-8

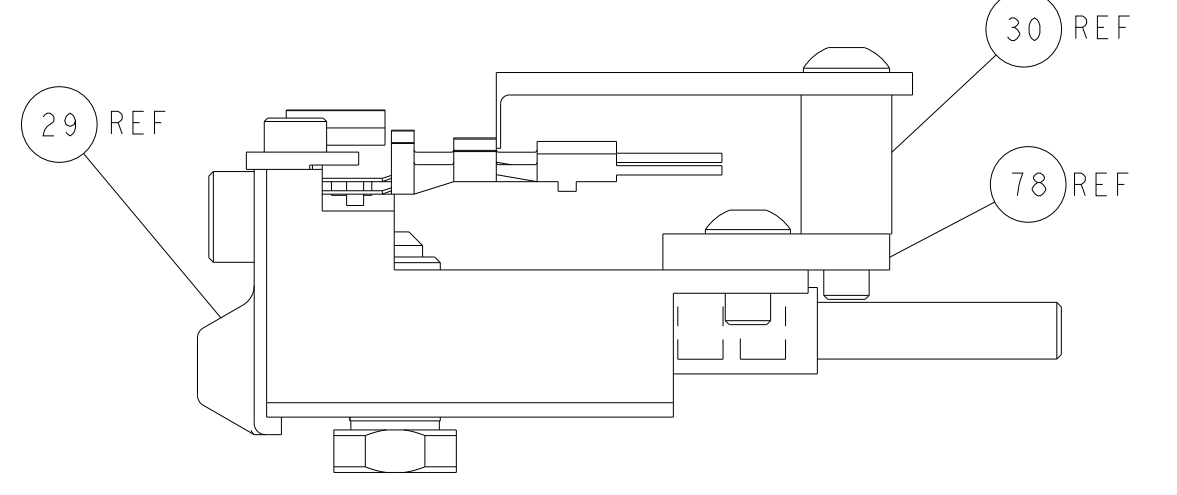


TERMINAL SUPPORT LOCATION FOR RECEPTACLE TERMINAL P/N 1326032-9



RAM SET-UP

ITEM 78 LOCATED AT FRONT HOLES



FEED TRACK POSITION GUIDE BY WIRE BARREL

|                       |  |   |  |   |  |  |  |   |  |
|-----------------------|--|---|--|---|--|--|--|---|--|
| DIMENSIONS:<br>mm<br> |  | TOLERANCES UNLESS OTHERWISE SPECIFIED:<br>0 PLC ±<br>1 PLC ±<br>2 PLC ±<br>3 PLC ±<br>4 PLC ±<br>ANGLES ±<br>FINISH |  | DWN Y. YIN 25JUL2012<br>CHK G. BAILEY 25JUL2012<br>APVD S. XI 25JUL2012<br>PRODUCT SPEC<br>APPLICATION SPEC<br>WEIGHT<br>Customer Accessible Production Drawing |  | NAME<br>Ocean Side Feed Applicator<br>SIZE CAGE CODE DRAWING NO<br>A1 00779 C-2151730<br>SCALE 1:1 SHEET 4 OF 4 REV E2 |  | RESTRICTED TO<br>TE Connectivity<br>Harrisburg, PA 17105-3608 |  |
|-----------------------|--|---|--|---|--|--|--|---|--|