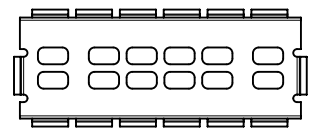
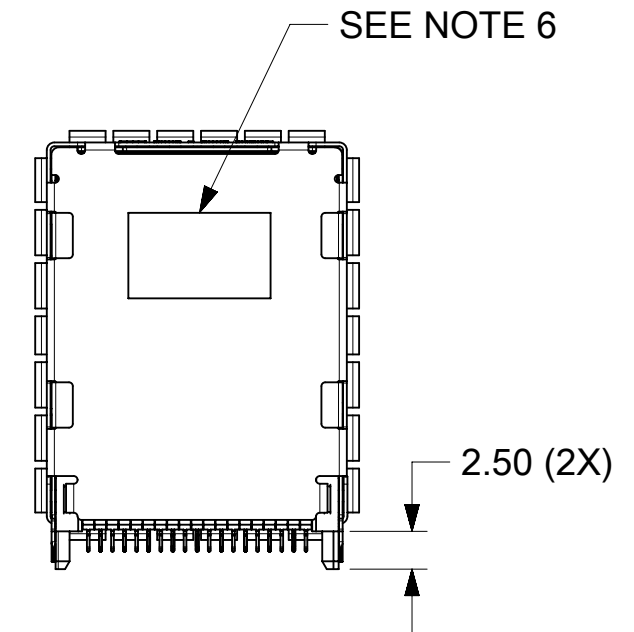
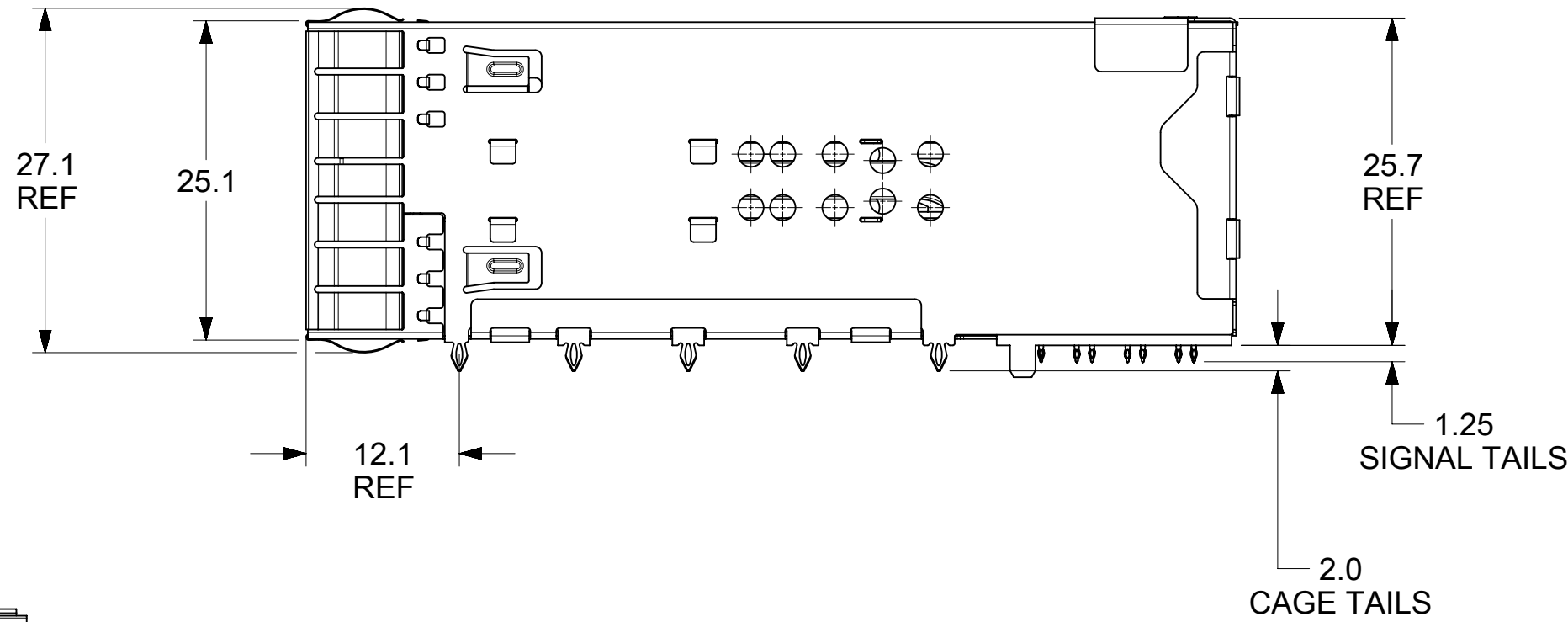
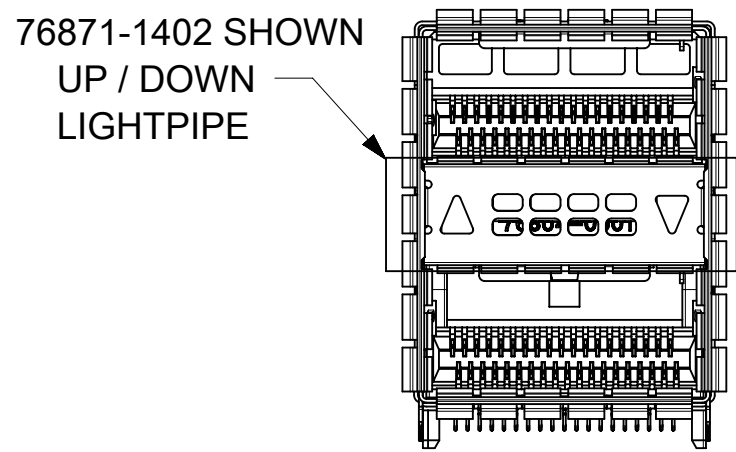
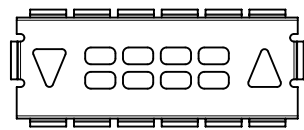


NOTES

- MATERIALS
 CAGE: NICKLE SILVER, 0.25 THICK
 SPRING FINGERS: PHOS. BRONZE, 0.10 THICK
 CONNECTOR HOUSING: HIGH PERFORMANCE THERMOPLASTIC, 94V-0
 TERMINALS: HIGH PERFORMANCE COPPER ALLOY, 0.18 THICK
- FINISH
 SPRING FINGERS: 100µm NICKEL OVERALL
 TERMINALS: CONTACT AREA: 0.76µm MIN GOLD OVER
 2.5µm MIN NICKEL
 COMPLIANT AREA: 0.76-1.52µm MATTE TIN
 OVER 1.27µm MIN NICKEL
- ALL SURFACES TO BE CLASS "C" OR BETTER PER MOLEX COSMETIC SPECIFICATION PS-45499-002
- REFER TO PK-76871-9001 FOR PACKAGING INFORMATION
- CONNECTOR INTENDED TO MATE WITH CABLE PLUG SERIES 74757 AND 74758
- DATE CODE LOCATION SHOWN. DATE CODE FORMAT: DDDY
 DDD = DAY OF THE YEAR, Y = YEAR



76871-1401
AIRFLOW ONLY
NO LIGHTPIPE



76871-1403
DOWN / UP
LIGHTPIPE
(OBSOLETE)

THIS DRAWING CONTAINS INFORMATION THAT IS PROPRIETARY TO MOLEX ELECTRONIC TECHNOLOGIES, LLC AND SHOULD NOT BE USED WITHOUT WRITTEN PERMISSION

DIMENSION UNITS		SCALE		CURRENT REV DESC: OBSOLETE PART NO				molex			
mm		2:1									
GENERAL TOLERANCES (UNLESS SPECIFIED)				EC NO: 625872				QSFP+ 2X1 W/EMI SPRINGS			
				DRWN: VLOKESHA 2019/09/03							
4 PLACES ±				CHK'D: GB 2019/11/06				PRODUCT CUSTOMER DRAWING			
3 PLACES ±				APPR: GGA 2019/11/12							
2 PLACES ± 0.13				INITIAL REVISION:				DOCUMENT NUMBER			
1 PLACE ± 0.25				DRWN: JKACHLIC 2012/08/09							
0 PLACES ±				APPR: MBANAKIS 2012/08/22				SD-76871-1400			
ANGULAR TOL ± 0.5°				THIRD ANGLE PROJECTION							
DRAFT WHERE APPLICABLE MUST REMAIN WITHIN DIMENSIONS				DRAWING		SERIES		MATERIAL NUMBER		CUSTOMER	
				C-SIZE		76871		SEE CHART		GENERAL MARKET	
								SHEET NUMBER		1 OF 3	

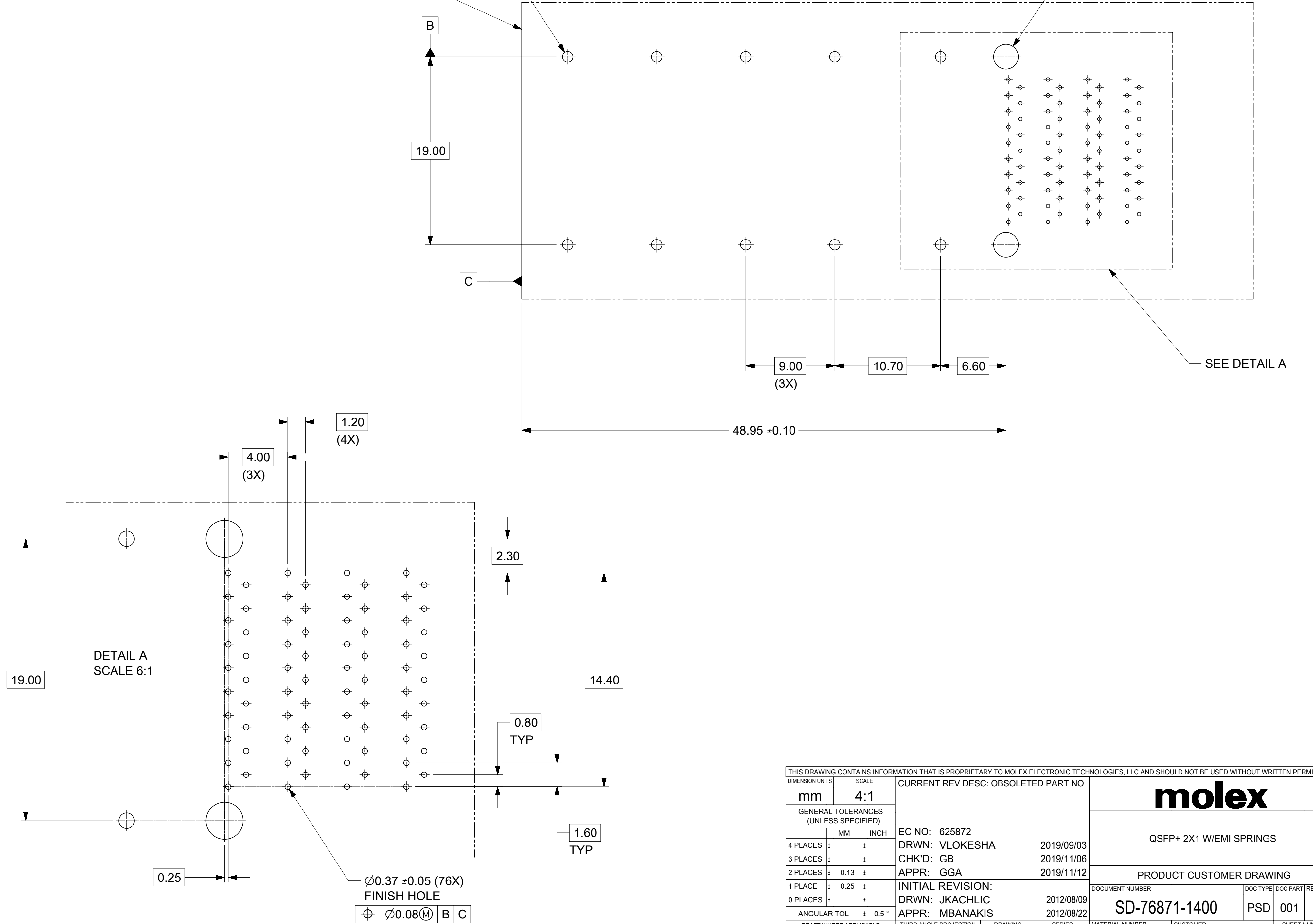
PART NUMBER	AIRFLOW/LIGHTPIPE OPTION				
768711401	AIRFLOW ONLY. NO LIGHTPIPE				
768711402	UP /DOWN LIGHTPIPE INDICATOR				
DOCUMENT STATUS	P1	RELEASE DATE	2019/11/12	07:19:29	

Ø1.05 ±0.05 (10X)
FINISH HOLE
⊕ Ø0.08(M) B C

Ø2.50 ±0.05 (2X)
DRILL HOLE
⊕ Ø0.08(M) B C

FRONT EDGE OF BOARD

FRONT EDGE OF BOARD



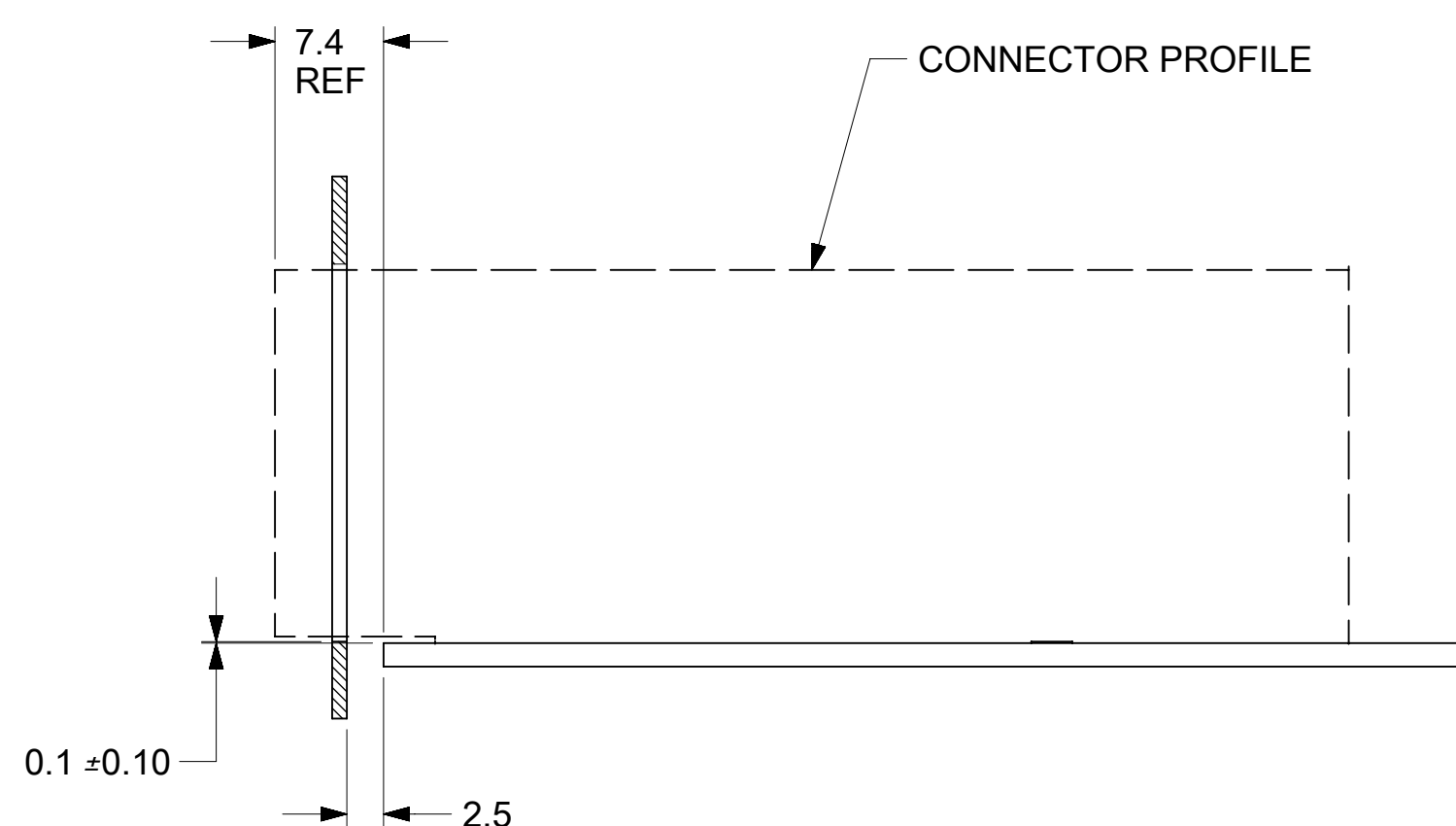
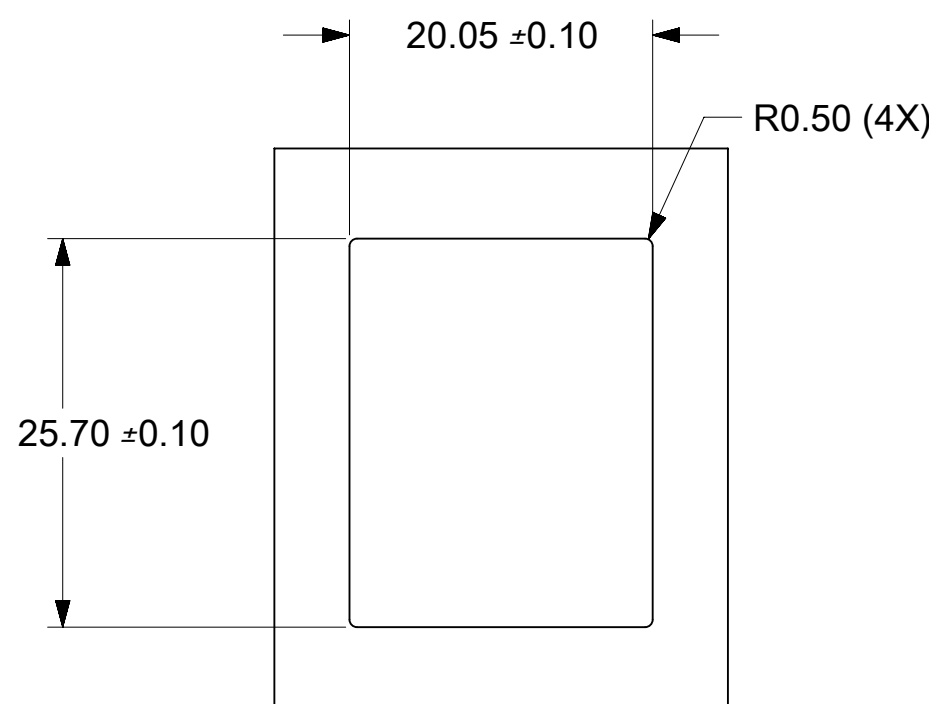
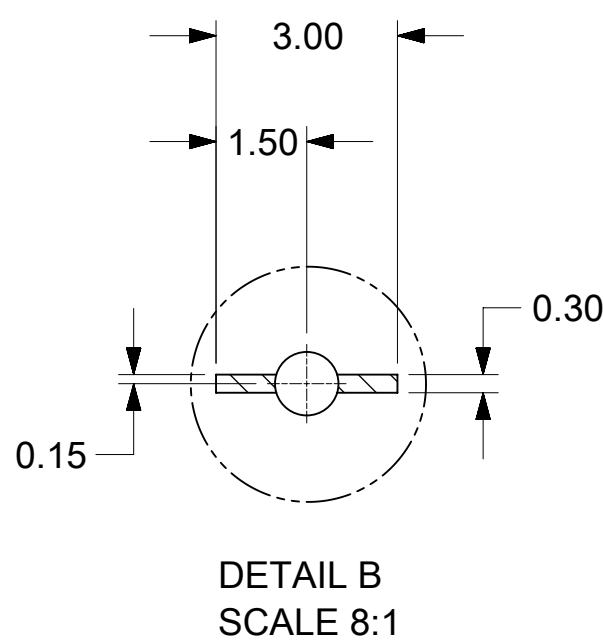
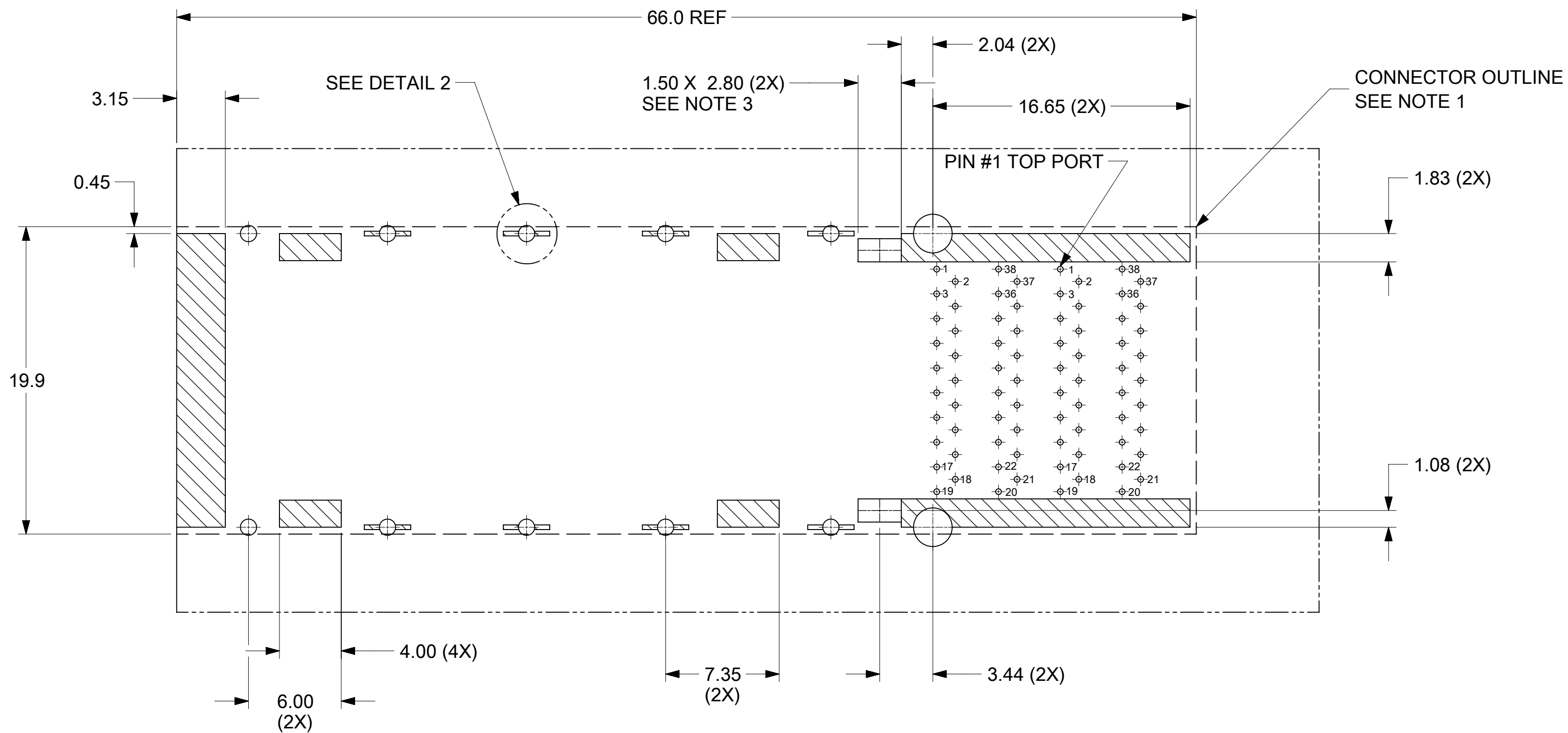
SEE DETAIL A

DETAIL A
SCALE 6:1

THIS DRAWING CONTAINS INFORMATION THAT IS PROPRIETARY TO MOLEX ELECTRONIC TECHNOLOGIES, LLC AND SHOULD NOT BE USED WITHOUT WRITTEN PERMISSION

DIMENSION UNITS		SCALE		CURRENT REV DESC: OBSOLETE PART NO			
mm		4:1		molex QSFP+ 2X1 W/EMI SPRINGS PRODUCT CUSTOMER DRAWING DOCUMENT NUMBER: SD-76871-1400 DOC TYPE: PSD DOC PART: 001 REVISION: C MATERIAL NUMBER: SEE CHART CUSTOMER: GENERAL MARKET SHEET NUMBER: 2 OF 3			
GENERAL TOLERANCES (UNLESS SPECIFIED)							
	MM	INCH					
4 PLACES	±						
3 PLACES	±						
2 PLACES	± 0.13			EC NO: 625872		2019/09/03	
1 PLACE	± 0.25			DRWN: VLOKESHA		2019/11/06	
0 PLACES	±			CHK'D: GB		2019/11/12	
ANGULAR TOL ± 0.5 °				APPR: GGA		INITIAL REVISION:	
DRAFT WHERE APPLICABLE MUST REMAIN WITHIN DIMENSIONS				THIRD ANGLE PROJECTION		DRAWING SERIES	
				C-SIZE		76871	
				DRWN: JKACHLIC		2012/08/09	
				APPR: MBANAKIS		2012/08/22	

DOCUMENT STATUS	P1	RELEASE DATE	2019/11/12	07:19:29
-----------------	----	--------------	------------	----------



NOTES:

1. THE ENTIRE AREA UNDER THE CONNECTOR IS A COMPONENT KEEP-OUT ZONE
2. CROSS HATCHED AREAS INDICATE PLACES WHERE THE PLASTIC HOUSING AND METAL CAGE MAY BE IN CONTACT WITH THE PCB SURFACE. THESE AREAS ARE TRACE KEEP-OUT ZONES
3. THESE 2 RECTANGULAR ZONES ARE FOR LED PLACEMENT. LED HEIGHT SHOULD NOT EXCEED 0.8 AND PLACEMENT SHOULD BE CENTERED WITHIN THIS LED KEEP-IN ZONE
4. RECOMMENDED LED CHIP PACKAGE SIZE IS 0805

PANEL OPENING REQUIREMENTS

THIS DRAWING CONTAINS INFORMATION THAT IS PROPRIETARY TO MOLEX ELECTRONIC TECHNOLOGIES, LLC AND SHOULD NOT BE USED WITHOUT WRITTEN PERMISSION									
DIMENSION UNITS		SCALE		CURRENT REV DESC: OBSOLETE PART NO					
mm		2:1		<p>molex</p> <p>QSFP+ 2X1 W/EMI SPRINGS</p> <p>PRODUCT CUSTOMER DRAWING</p> <p>DOCUMENT NUMBER: SD-76871-1400 DOC TYPE: PSD DOC PART: 001 REVISION: C</p> <p>MATERIAL NUMBER: SEE CHART CUSTOMER: GENERAL MARKET SHEET NUMBER: 3 OF 3</p>					
GENERAL TOLERANCES (UNLESS SPECIFIED)									
		MM	INCH						
4 PLACES	±								
3 PLACES	±								
2 PLACES	±	0.13							
1 PLACE	±	0.25							
0 PLACES	±								
ANGULAR TOL		± 0.5 °		<p>EC NO: 625872</p> <p>DRWN: VLOKESHA 2019/09/03</p> <p>CHK'D: GB 2019/11/06</p> <p>APPR: GGA 2019/11/12</p> <p>INITIAL REVISION:</p> <p>DRWN: JKACHLIC 2012/08/09</p> <p>APPR: MBANAKIS 2012/08/22</p>					
DRAFT WHERE APPLICABLE MUST REMAIN WITHIN DIMENSIONS				THIRD ANGLE PROJECTION		DRAWING		SERIES	
				C-SIZE		76871			

DOCUMENT STATUS	P1	RELEASE DATE	2019/11/12 07:19:29
-----------------	----	--------------	---------------------