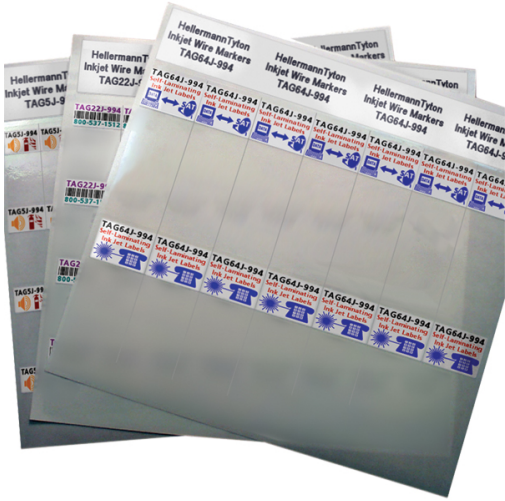


## Specification Sheet

Part Number: TAG51J-994



Ink Jet Label, Self-Laminating, 1.0" x .35" x .75", 64 Per Sheet, PET, White, 1000/pkg

Article Number	593-51994
Type	TAG51J
Color	White (WH)
Features & Benefits	<ul style="list-style-type: none"><li>•HellermannTyton Ink Jet labels are sheet fed for easy loading and fast printing.</li><li>•Ink Jet labels are made with high temperature materials and adhesives so that they will not be affected by the high heat of laser printing.</li><li>•Ink Jet labels are printable using toner for long term UV exposure.</li><li>•Ink Jet labels come in a variety of label sizes and types to fit most applications.</li></ul>
Quantity Per	pack

### Product Description

HellermannTyton's ink jet self-laminating labels are smear resistant, allowing them to be handled immediately. The labels are made of a heat resistant 1mm polyester film with a strong acrylic based adhesive. The printable area is a special ink-receptive film that absorbs the ink as it is printed on an ink jet printer.

**Short Description**

Ink Jet Label, Self-Laminating, 1.0" x .35" x .75", 64 Per Sheet, PET, White, 1000/pkg

**Global Part Name**

TAG51J-994-WH

**Width W (Imperial)**

1.0

**Width W (Metric)**

25.4

**Bundle Diameter Min (Imperial)**

0.063

**Bundle Diameter Min (Metric)**

1.60

**Bundle Diameter Max (Imperial)**

0.087

**Bundle Diameter Max (Metric)**

2.20

**Thickness T (Metric)**

35.0

**Width of Liner (Metric)**

215.00

**Width of Liner (imperial)**

8.5

**Outside Diameter Max(Imperial)**

0.087

**Outside Diameter Min (metric)**

1.6

**Outside Diameter Min(Imperial)**

0.059

**Outside Diameter Max (metric)**

3.30

<b>Material</b>	Type 994, Polyethylene Terephthalate (PET)
<b>Material Shortcut</b>	994
<b>Adhesive</b>	Acrylic
<b>Halogen free</b>	No
<b>Adhesive Operating Temperature</b>	-40°F to +302°F (-40°C to +150°C)
<b>Operating Temperature (Metric)</b>	-40°F to +302°F (-40°C to +150°C)
<b>Reach Complaint(Article 33)</b>	Yes
<b>ROHS Complaint</b>	Yes
<b>Package Quantity(Imperial)</b>	1000
<b>Package Quantity (Metric)</b>	1000
<b>Customs Number</b>	3919905060
<b>Labels per Column</b>	8
<b>Labels per Row</b>	8
<b>Weight (Metric)</b>	0.521
<b>Weight (Imperial)</b>	1.14

