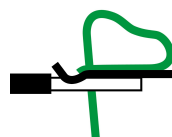
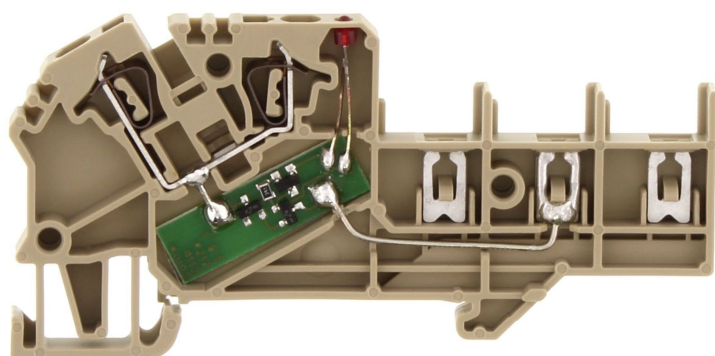


3536.2

ZIZA 1,5/4/LED(RD)/24V BG



Initiator terminal / actuator terminal, Tension-spring connection, Mounting type: Mounting rail TS 35/7.5, Rated cross-section: 1.5 mm<sup>2</sup>, Width: 5.1 mm, Colour: Beige

## Business data

|  |  |
|--|--|
| Packaging unit                             | 100                                      |
| Quantity unit                              | PC                                       |
| Weight per piece (not including packaging) | 8 g                                      |
| Weight per piece (including packaging)     | 8.66 g                                   |
| Unit of weight                             | G  |
| Customs number                             | 85369010                                 |
| Country of origin                          | DE                                       |
| Product description                        | Initiator terminals / actuator terminals |

3536.2

ZIZA 1,5/4/LED(RD)/24V BG

## Technical data

### Dimensions

|                  |         |
|------------------|---------|
| Length           | 82 mm   |
| Width            | 5.1 mm  |
| Height TS 35/7.5 | 40.5 mm |
| Pitch            | 5 mm    |

### Ratings

|   |                     |
|---|---------------------|
| Rated voltage                                   | 400 V               |
| Rated current                                   | 17.5 A              |
| Rated cross-section                             | 1.5 mm <sup>2</sup> |
| Rated impulse voltage                           | 4 kV                |
| Overvoltage category                            | III                 |
| Contamination degree                            | 3                   |
| Maximum power dissipation for nominal condition | 0.56 W              |

### Connection data

|  |                           |
|--|---------------------------|
| Connection principle                                     | Tension-spring connection |
| Connections  | 5                         |
| Number of terminals per level                            | 5                         |
| Number of levels   | 1                         |
| Wire cross-section single-core (rigid) / stranded, min.  | 0.5 mm <sup>2</sup>       |
| Wire cross-section single core (rigid)/stranded, max.    | 2.5 mm <sup>2</sup>       |
| Wire cross-section stranded, min.                        | 0.5 mm <sup>2</sup>       |
| Wire cross-section stranded, max.                        | 2.5 mm <sup>2</sup>       |
| Wire cross-section stranded with wire-end ferrules, min. | 0.5 mm <sup>2</sup>       |
| Wire cross-section stranded with wire-end ferrules, max. | 1.5 mm <sup>2</sup>       |
| Wire cross-section AWG, min.                             | 26                        |
| Wire cross-section AWG, max.                             | 14                        |
| Stripping length   | 8 mm                      |

3536.2

ZIZA 1,5/4/LED(RD)/24V BG

---

## Technical data

---

### Materials

---

|                           |                              |
|---------------------------|------------------------------|
| Insulation housing        | Polyamide 6.6, Polyamide 6.6 |
| Flammability class UL 94  | V-0                          |
| Working temperature, min. | -40 °C                       |
| Working temperature, max. | 120 °C                       |

### Further technical data

---

|                                     |                         |
|-------------------------------------|-------------------------|
| Mounting type                       | Mounting rail TS 35/7,5 |
| Gauge plug acc. to EN 60 947-1      | A1                      |
| Number of cross-connection channels | 1                       |
| End plate required                  | ✓                       |
| Can be cross-connected              | ✓                       |
| Colour of lamp                      | Red                     |

### Print

---

|        |       |
|--------|-------|
| Colour | Beige |
|--------|-------|

### Environmental Product Compliance

---

|                                |            |
|--------------------------------|------------|
| REACH Conform                  | yes        |
| REACH Reference date           | 2022-01-17 |
| REACH Candidate Substance Note | No         |
| RoHS Conform                   | yes        |

**3536.2**

**ZIZA 1,5/4/LED(RD)/24V BG**

## Approvals

### CSA approval

|                                  |              |
|----------------------------------|--------------|
| CSA approval                     | C22.2 No 158 |
| CSA approval granted             | yes          |
| CSA Usegroup C: rated voltage    | 300 V        |
| CSA Usegroup C: rated current    | 12,5 A       |
| CSA wire cross-section AWG, min. | 26           |
| CSA wire cross-section AWG, max. | 14           |
| CSA stripping length             | 8 mm         |

### CSAus approval

|                                    |         |
|------------------------------------|---------|
| CSAus approval                     | UL 1059 |
| CSAus approval granted             | yes     |
| CSAus Usegroup C: rated voltage    | 300 V   |
| CSAus Usegroup C: rated current    | 12,5 A  |
| CSAus wire cross-section AWG, min. | 26      |
| CSAus wire cross-section AWG, max. | 14      |
| CSAus stripping length             | 8 mm    |

### cUL Recognized

|  |              |
|--|--------------|
| cUL approval   | C22.2 No 158 |
| cUL Usegroup C: rated voltage                        | 300 V        |
| cUL Usegroup C: rated current                        | 12,5 A       |
| cUL wire cross-section single-core (rigid) AWG, min. | 26           |
| cUL wire cross-section single-core (rigid) AWG, max. | 14           |
| cUL wire cross-section stranded AWG, min.            | 26           |
| cUL wire cross-section stranded AWG, max.            | 14           |
| cUL wire material                                    | Cu           |
| cUL Recognized                                       | yes          |

**3536.2**

**ZIZA 1,5/4/LED(RD)/24V BG**

---

## Approvals

---

### German Lloyd approval

---

|   |                     |
|---|---------------------|
| GL approval                                     | IEC 60947-7-1:2009  |
| GL approval granted                             | yes                 |
| GL rated voltage                                | 400 V               |
| GL rated current                                | 17,5 A              |
| GL wire cross-section single core (rigid), min. | 2.5 mm <sup>2</sup> |
| GL wire cross-section single-core (rigid), max. | 1.5 mm <sup>2</sup> |
| GL wire cross-section, min.                     | 1.5 mm <sup>2</sup> |
| GL wire cross-section stranded, max.            | 2.5 mm <sup>2</sup> |
| GL environmental category                       | C                   |

### KEMA KEUR approval

---

|   |                     |
|---|---------------------|
| KEMA KEUR approval                                | EN 60947-7-1:2009   |
| KEMA KEUR approval granted                        | yes                 |
| KEMA rated voltage                                | 400 V               |
| KEMA rated current                                | 17,5 A              |
| KEMA rated impulse voltage                        | 4 kV                |
| KEMA wire cross-section single core (rigid), min. | 0.5 mm <sup>2</sup> |
| KEMA wire cross-section single-core (rigid), max. | 2.5 mm <sup>2</sup> |
| KEMA wire cross-section stranded, min.            | 0.5 mm <sup>2</sup> |
| KEMA wire cross-section stranded, max.            | 2.5 mm <sup>2</sup> |

**3536.2**

**ZIZA 1,5/4/LED(RD)/24V BG**

---

## Approvals

---

### UL Recognized

---

|   |         |
|---|---------|
| UL approval   | UL 1059 |
| UL Usegroup C: rated voltage                        | 300 V   |
| UL Usegroup C: rated current                        | 12,5 A  |
| UL wire cross-section single-core (rigid) AWG, min. | 26      |
| UL wire cross-section single-core (rigid) AWG, max. | 14      |
| UL wire cross-section stranded AWG, min.            | 14      |
| UL wire cross-section stranded AWG, max.            | 26      |
| UL wire material                                    | Cu      |
| UL factory wiring                                   | yes     |
| UL field wiring                                     | yes     |
| UL Recognized                                       | yes     |

---

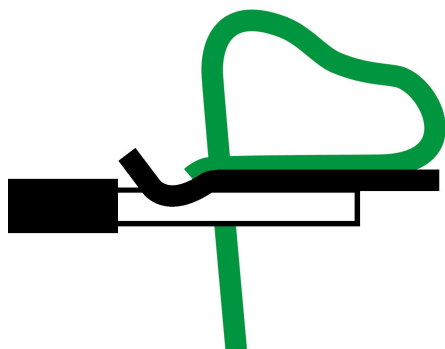
3536.2

ZIZA 1,5/4/LED(RD)/24V BG

---

## Media

---



3536.2

ZIZA 1,5/4/LED(RD)/24V BG

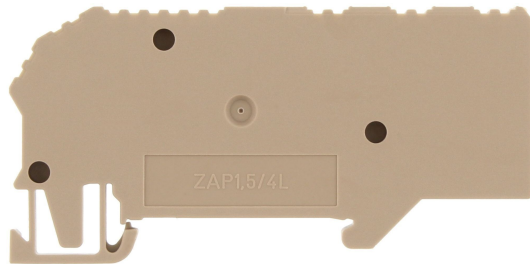
---

## Accessories

---

### End plate

---



End plate, Width: 5.1 mm, Colour: Beige

---

### General order data

| Product number: | Article name         | GTIN (EAN)    | Packaging unit |
|-----------------|----------------------|---------------|----------------|
| 3747.2          | ZAP/TW ZIZA 1,5/4 BG | 4044211060565 | 20 ST          |

---



3536.2

ZIZA 1,5/4/LED(RD)/24V BG

## Accessories

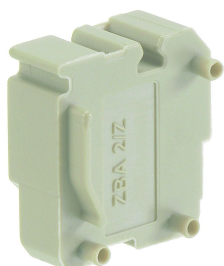
### Label holder



Label holder, Pitch size: 5.1 mm, Colour: beige

#### General order data

| Product number: | Article name | GTIN (EAN)    | Packaging unit |
|-----------------|--------------|---------------|----------------|
| 3786.2          | ZBA 2 BG     | 4044211061128 | 50 ST          |



Label holder, Pitch size: 5.1 mm, Colour: beige

#### General order data

| Product number: | Article name | GTIN (EAN)    | Packaging unit |
|-----------------|--------------|---------------|----------------|
| 3787.2          | ZBA 2/Z BG   | 4044211061135 | 50 ST          |

3536.2

ZIZA 1,5/4/LED(RD)/24V BG

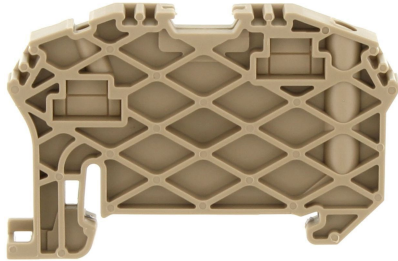
---

## Accessories

---

### End stop

---



End stop, Mounting type: Mounting rail TS 35/7.5 and TS 35/15, Width: 6 mm, Colour: Beige

---

### General order data

| Product number: | Article name | GTIN (EAN)    | Packaging unit |
|-----------------|--------------|---------------|----------------|
| 3748.2          | ZES 35 BG    | 4044211060572 | 50             |

---

3536.2

ZIZA 1,5/4/LED(RD)/24V BG

## Accessories

### Potential distribution strip



Potential distribution strip, Tension-spring connection, Mounting type: Plug in, Rated cross-section: 1.5 mm<sup>2</sup>, Width: 8.7 mm, Colour: Red-brown

#### General order data

| Product number: | Article name | GTIN (EAN)    | Packaging unit |
|-----------------|--------------|---------------|----------------|
| 3739.6          | ZPL 1,5 RB   | 4044211060480 | 100            |



Potential distribution strip, Tension-spring connection, Mounting type: Plug in, Rated cross-section: 1.5 mm<sup>2</sup>, Width: 8.7 mm, Colour: Green-yellow

#### General order data

| Product number: | Article name    | GTIN (EAN)    | Packaging unit |
|-----------------|-----------------|---------------|----------------|
| 3743.2          | ZPL 1,5/PE GNYE | 4044211060527 | 100 ST         |



Potential distribution strip, Tension-spring connection, Mounting type: Plug in, Rated cross-section: 1.5 mm<sup>2</sup>, Width: 8.7 mm, Colour: Yellow

#### General order data

| Product number: | Article name | Creation date 12.03.2022 04:46:25<br>Subject to technical changes | GTIN (EAN)    | Packaging unit |
|-----------------|--------------|---|---------------|----------------|
| 3791.8          | ZPL 1,5 YE   |   | 4044211061197 | 100 ST         |

3536.2

ZIZA 1,5/4/LED(RD)/24V BG

## Accessories

### Potential distribution strip



Potential distribution strip, Tension-spring connection, Mounting type: Plug in, Rated cross-section: 1.5 mm<sup>2</sup>, Width: 8.7 mm, Colour: Green

#### General order data

| Product number: | Article name | GTIN (EAN)    | Packaging unit |
|-----------------|--------------|---------------|----------------|
| 3792.1          | ZPL 1,5 GN   | 4044211061203 | 100 ST         |



Potential distribution strip, Tension-spring connection, Mounting type: Plug in, Rated cross-section: 1.5 mm<sup>2</sup>, Width: 8.7 mm, Colour: Orange

#### General order data

| Product number: | Article name | GTIN (EAN)    | Packaging unit |
|-----------------|--------------|---------------|----------------|
| 3793.3          | ZPL 1,5 OG   | 4044211061210 | 100 ST         |



Potential distribution strip, Tension-spring connection, Mounting type: Plug in, Rated cross-section: 1.5 mm<sup>2</sup>, Width: 8.7 mm, Colour: Beige

#### General order data

| Product number: | Article name | GTIN (EAN)    | Packaging unit |
|-----------------|--------------|---------------|----------------|
| 3738.2          | ZPL 1,5 BG   | 4044211060473 | 100 ST 12      |

Creation date 12.03.2022 04:46:25  
Subject to technical changes

3536.2

ZIZA 1,5/4/LED(RD)/24V BG

---

## Accessories

---

### Test adapter

---



Test adapter, Pitch size: 5.1 mm, Colour:  
Beige

---

### General order data

| Product number: | Article name | GTIN (EAN)    | Packaging unit |
|-----------------|--------------|---------------|----------------|
| 17034.2         | ZTA 1,5      | 4044211155452 | 10 ST          |

---

3536.2

ZIZA 1,5/4/LED(RD)/24V BG

## Accessories

### Insulated cross-connector



Insulated cross-connector, No. of poles: 2,  
Mounting type: Plug in, Width: 9.1 mm, Rated  
cross-section: 2.5 mm<sup>2</sup>, Colour: Yellow

#### General order data

| Product number: | Article name | GTIN (EAN)    | Packaging unit |
|-----------------|--------------|---------------|----------------|
| 3710.8          | ZQI 2,5/2 YE | 4044211060282 | 50             |



Insulated cross-connector, No. of poles: 99,  
Mounting type: Plug in, Width: 500 mm,  
Rated cross-section: 2.5 mm<sup>2</sup>, Colour: Yellow

#### General order data

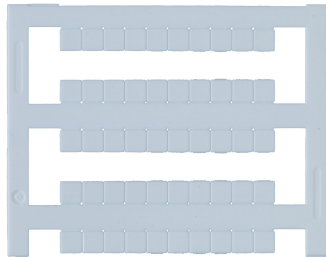
| Product number: | Article name             | GTIN (EAN)    | Packaging unit |
|-----------------|--------------------------|---------------|----------------|
| 3719.8          | ZQI 2,5/0,5 m/99 Pole YE | 4044211060374 | 2              |

3536.2

ZIZA 1,5/4/LED(RD)/24V BG

## Accessories

### Quick marking



Terminal marker / Pocket Maxicard, Length: 5 mm, Width: 5 mm, Colour: White

#### General order data

| Product number: | Article name   | GTIN (EAN)    | Packaging unit |
|-----------------|----------------|---------------|----------------|
| 4600.7          | PMC SB 5/50 WH | 4044211088903 | 500 ST         |

### Screwdriver



Screwdriver with bare blade, Colour: Black-grey

#### General order data

| Product number: | Article name | GTIN (EAN)    | Packaging unit |
|-----------------|--------------|---------------|----------------|
| 1085.0          | SDB 0,5x3,0  | 4044211014643 | 1 ST           |