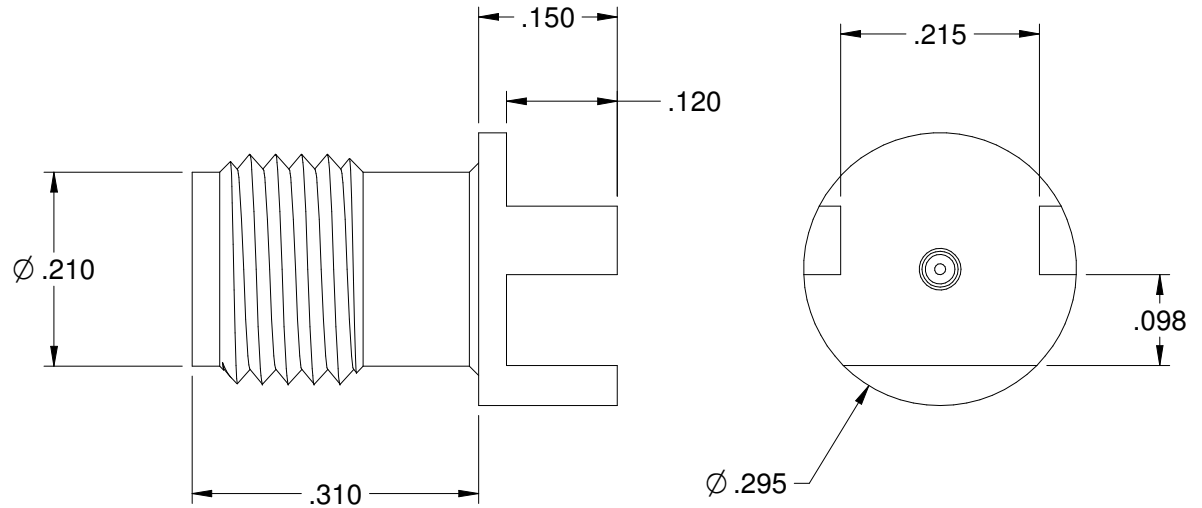
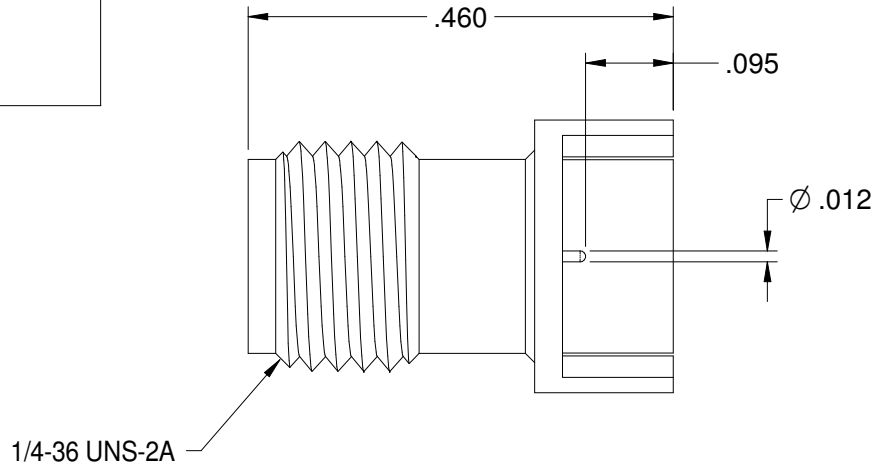
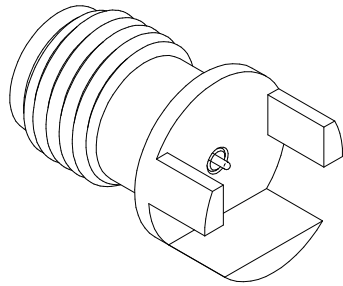


REV	ECO	DATE
1	ECO-19-0008	3/28/2019
1A	ECO-19-0032	7/25/2019

PART NUMBER	ITEM ① BODY	ITEM ② CONTACT	ITEM ③ INSULATOR
145-0701-861	BRASS GOLD PL .00003 MIN OVER NICKEL PL.00005 MIN OVER COPPER	BERYLLIUM COPPER GOLD PL .00005 MIN OVER NICKEL PL.00005 MIN OVER COPPER	TEFLON



SPECIFICATION:

ELECTRICAL:

- IMPEDANCE: 50 OHMS
- FREQUENCY RANGE: 0-40 GHz
- VSWR: 1.5 MAX
- INSERTION LOSS: 0.05 √F dB MAX (F IN GHz)
- WORKING VOLTAGE: 250 VRMS MAX AT SEA LEVEL
- DIELECTRIC WITHSTANDING VOLTAGE: 1000VRMS MIN AT SEA LEVEL
- INSULATION RESISTANCE: 5000 MEGOHM MIN
- CONTACT RESISTANCE:
 - CENTER CONTACT - INITIAL 3 MILLIOHM MAX, AFTER ENVIRONMENTAL NOT APPLICABLE
 - OUTER CONDUCTOR - INITIAL 2 MILLIOHM MAX, AFTER ENVIRONMENTAL NOT APPLICABLE
- RF LEAKAGE: -90dB TYPICAL AT 2.5GHz

MECHANICAL:

- ENGAGEMENT/DISENGAGEMENT FORCE: 2 INCH-POUNDS MAX
- MATING TORQUE: 7 TO 10 INCH-POUNDS
- DURABILITY: 500 CYCLES MIN

ENVIRONMENTAL:

- OPERATING TEMPERATUR: -40 TO 85°C
- THERMAL SHOCK: MIL-STD-202, METHOD 107, CONDITION B
- CORROSION: MIL-STD-202, METHOD 101, CONDITION B
- SHOCK: MIL-STD-202, METHOD 213, CONDITION I
- VIBRATION: MIL-STD-202, METHOD 204, CONDITION D
- MOISTURE RESISTANCE: MIL-STD-202, MEHTOD 106

<p>The PROPRIETARY Document is property of Cinch Connectivity Solutions. No reproduction, distribution, or disclosure of this document is permitted without the express written permission and is intended for internal use only.</p> <p>INTERPRET DRAWINGS IN ACCORDANCE WITH ASME Y14.5-2009</p>	Material:	Model No. 145-0701-861	JOHNSON	
	SEE NOTE	RoHS2 <input checked="" type="checkbox"/> 2011/65/EU	Cage Code	Title: 2.92mm END LAUNCH JACK FOR .093" BOARD
	SEE NOTE	UNLESS OTHERWISE SPECIFIED: FINISH: .XXX ±.01 .XXXX ±.0010 ANGLES ±1°00'	3RD ANGLE PROJECTION	Drawing No. 145-0701-861
	SEE NOTE	Date: 3/20/2019	Drawn By: R.SHEN	Rev. 1A
Workmanship Size		Size B	DO NOT SCALE DRAWING	Sheet 1 of 1