

6

5

4

3

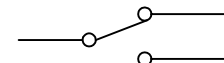
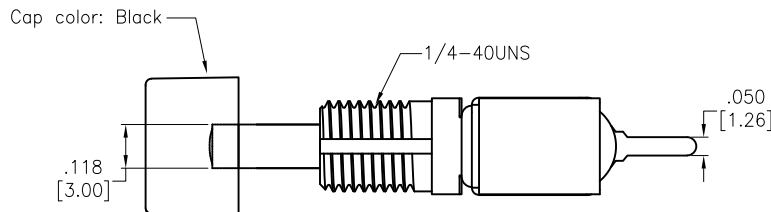
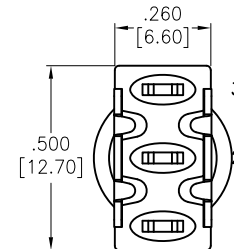
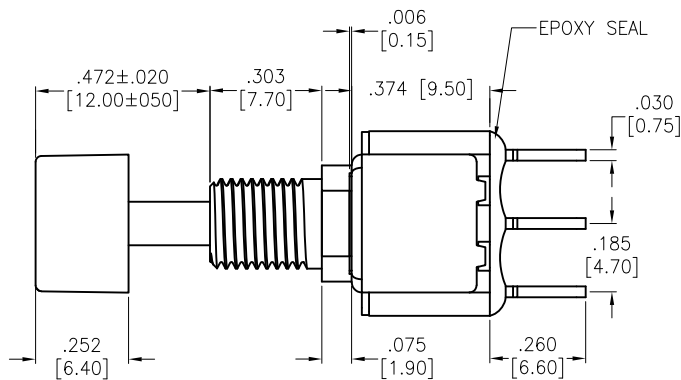
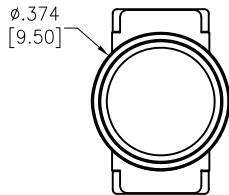
2

1

APPROVED: _____

DATE: _____ TITLE: _____

Rev	AWO #	Description	Date	Appr
-		RELEASED	3/4/21	



CIRCUIT DIAGRAM (SPDT) ON-ON

SPECIFICATIONS:

Material:
 Movable Contact: Copper Alloy, Silver Plated
 Terminal: Copper Alloy, Silver Plated
 Electrical:
 Rating:
 6 Amps with resistive load @ 125VAC or 28VDC
 3 Amps with resistive load @ 250VAC
 Contact resistance: 10 mΩ max
 Insulation resistance: 1,000 Mohms min
 Dielectric withstanding voltage: 1,500V RMS @Sea level
 Temperature Rating:
 Operating temperature: -30°C to +85°C
 Environmental:
 Lead free, RoHS compliant



UNLESS OTHERWISE SPECIFIED ALL DIMENSIONS ARE INCHES [MM] TOLERANCES: EXCEPT AS NOTED			
INCHES		HOLES	
.X	± .10	Ø.X	± .10
.XX	± .020	Ø.XX	± .015
.XXX	± .015	Ø.XXX	± .010
APPROVALS		DATE	
DRAWN	WX	3/4/21	
CHECKED	AC	3/4/21	
APPROVED			

ADAM TECH 909 Rahway Avenue,
 Union, NJ 07083
 Phone: 908-687-5000
 Fax: 908-687-5710

TITLE: PUSHBUTTON SWITCH, ON-ON, SPDT
 COPPER ALLOY SILVER PLATED, PCB TYPE

SIZE	PART NO.	REV.
X	SW-PB8-AA22A2QE-3	-

REF: S00198T SCALE: NTS SHEET 1 OF 1

6

5

4

3

2

1