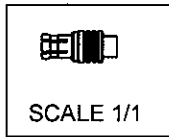
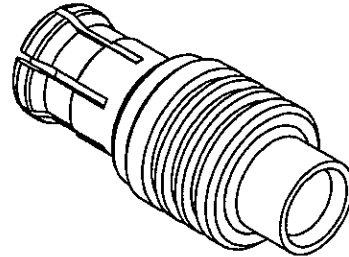
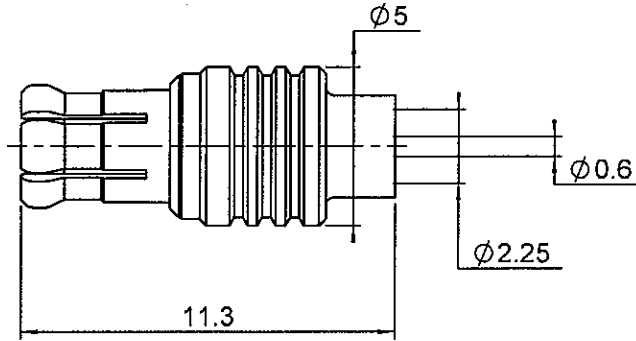
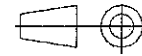


TECHNICAL DATA SHEET	1/3
<b>STRAIGHT PLUG SOLDER TYPE</b>	<b>R113.053.000</b>
<b>CABLE .085</b>	Series : MCX



All dimensions are in mm.



COMPONENTS	MATERIALS	PLATINGS (µm)
BODY	BRASS	GOLD 0.2 OVER NICKEL 2
CENTER CONTACT	BRASS	GOLD 1.3 OVER NICKEL 2
OUTER CONTACT	BERYLLIUM COPPER	GOLD 0.5 OVER NICKEL 2
INSULATOR	PTFE	
GASKET	-	-
OTHERS PARTS	-	-
-	-	-
-	-	-

Issue : 0925 B

In the effort to improve our products, we reserve the right to make changes judged to be necessary.

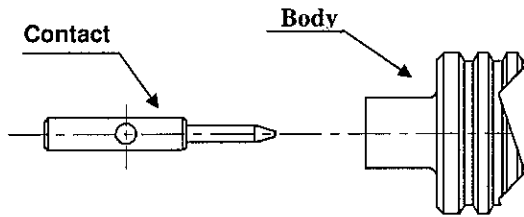


TECHNICAL DATA SHEET		2 / 3														
<b>STRAIGHT PLUG SOLDER TYPE</b>		<b>R113.053.000</b>														
<b>CABLE .085</b>		Series : MCX														
<b>PACKAGING</b>		<b>SPECIFICATION</b>														
Standard	Unit	Other														
<b>100</b>	<b>'W' option</b>	<b>Contact us</b>														
<b>ELECTRICAL CHARACTERISTICS</b>		<b>CABLE ASSEMBLY</b>														
Impedance	50 $\Omega$	<table border="1" style="width: 100%; border-collapse: collapse;"> <thead> <tr> <th style="text-align: left;">Stripping</th> <th>a</th> <th>b</th> <th>c</th> <th>d</th> <th>e</th> <th>f</th> </tr> </thead> <tbody> <tr> <td>mm</td> <td style="text-align: center;">2.70</td> <td style="text-align: center;">0.00</td> <td style="text-align: center;">0.00</td> <td style="text-align: center;">0.00</td> <td style="text-align: center;">2.10</td> <td style="text-align: center;">0.00</td> </tr> </tbody> </table>	Stripping	a	b	c	d	e	f	mm	2.70	0.00	0.00	0.00	2.10	0.00
Stripping	a	b	c	d	e	f										
mm	2.70	0.00	0.00	0.00	2.10	0.00										
Frequency	0-6 GHz	Assembly instruction :														
VSWR	1.10 + 0.0400 x F(GHz) Maxi															
Insertion loss	0.25 $\sqrt{F}$ (GHz) dB Maxi	Recommended cable(s)														
RF leakage	- ( NA - F(GHz)) dB mini	KS 1														
Voltage rating	250 Veff Maxi	RG 405														
Dielectric withstanding voltage	750 Veff mini	Cable retention														
Insulation resistance	1000 M $\Omega$ mini	- pull off <span style="float: right;">155 N mini</span>														
<b>MECHANICAL CHARACTERISTICS</b>		- torque <span style="float: right;">NA N.cm</span>														
Center contact retention		<b>TOOLING</b>														
Axial force – Mating end	NA N mini	<table border="1" style="width: 100%; border-collapse: collapse;"> <thead> <tr> <th>Part Number</th> <th>Description</th> <th>Hexagon</th> </tr> </thead> <tbody> <tr> <td>R282.740.020</td> <td>SOLDERING MOUNTING</td> <td></td> </tr> </tbody> </table>	Part Number	Description	Hexagon	R282.740.020	SOLDERING MOUNTING									
Part Number	Description	Hexagon														
R282.740.020	SOLDERING MOUNTING															
Axial force – Opposite end	NA N mini															
Torque	NA N.cm mini															
Recommended torque		<b>OTHERS CHARACTERISTICS</b>														
Mating	NA N.cm															
Panel nut	NA N.cm															
Clamp nut	NA N.cm															
A/F clamp nut	0.0000 mm															
Mating life	500 Cycles mini															
Weight	0.6430 g															
<b>ENVIRONMENTAL</b>																
Operating temperature	-55/+115 ° C															
Hermetic seal	NA Atm.cm3/s															
Panel leakage	NA															
<b>Issue : 0925 B</b> In the effort to improve our products, we reserve the right to make changes judged to be necessary.																

**STRAIGHT PLUG SOLDER TYPE**  
**CABLE .085**

**R113.053.000**  
 Series : MCX

**COMPONENT**



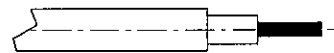
**STRIPPING DIMENSIONS**



We recommend a thermal preconditioning cable.

**1**

Cable stripping.



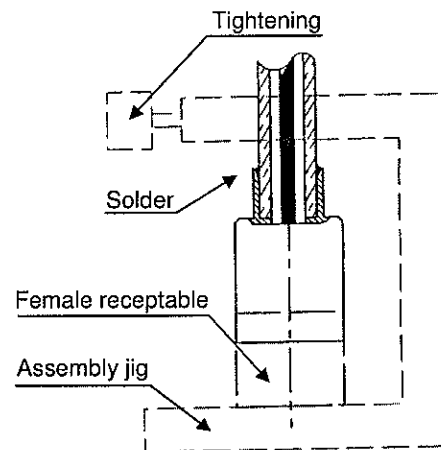
**2**

Tin centre contact solder pot.  
 Solder centre contact on cable inner conductor.  
 Clean solder.



**3**

Introduce cable into the connector body until contact with the body shoulder.  
 Place the sub assembly into the assembly jig R282 740 020 (or equivalent).  
 We advise to connect a female receptable to the connector prior to solder the body in order to respect right centre contact position.  
 Tighten the sub assembly.  
 Solder body on the cable.  
 Let the assembly cool down before removing it from the jig.  
 Clean solder.



Issue : 0925 B

In the effort to improve our products, we reserve the right to make changes judged to be necessary.

