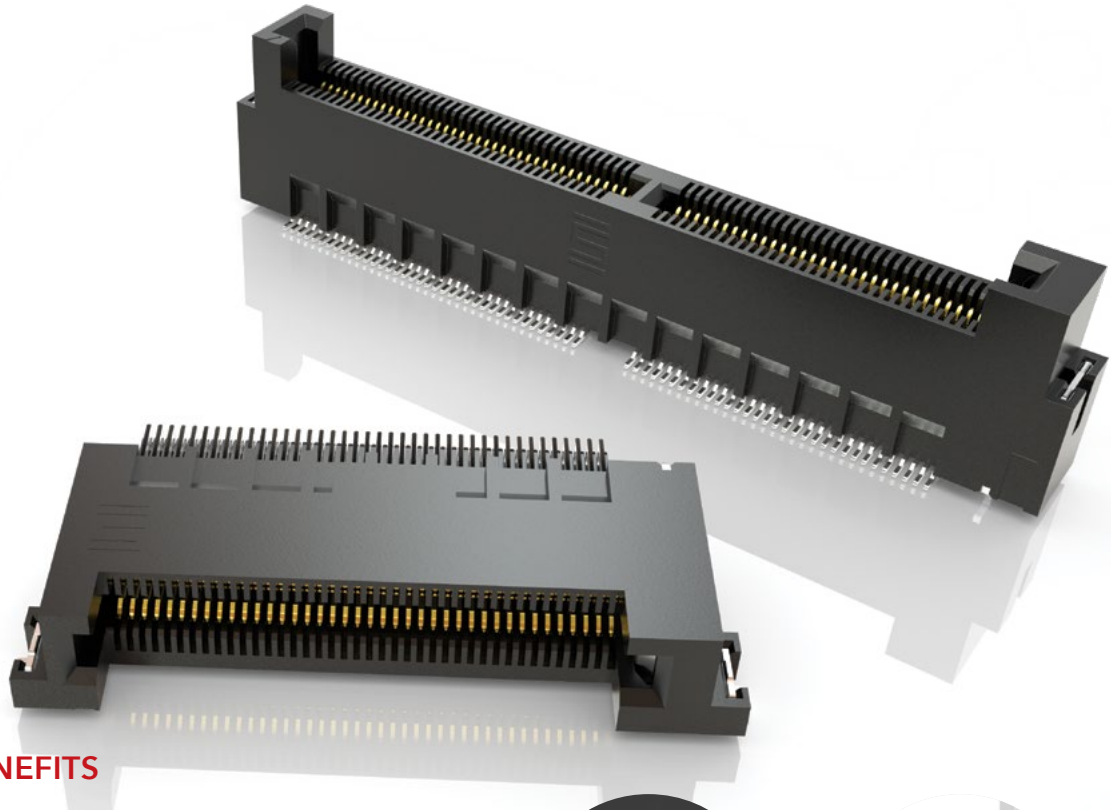


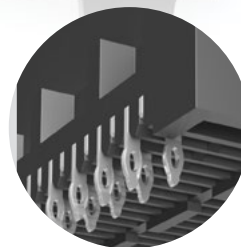
MICRO EDGE CARD SYSTEMS

0.50 mm, 0.635 mm, 0.80 mm, 1.00 mm, 1.27 mm, 2.00 mm PITCH

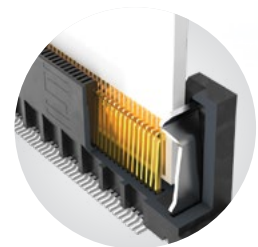


FEATURES & BENEFITS

- Up to 56 Gbps PAM4
- PCI Express® 4.0 (MEC5 Series)
- Solutions for .062" (1.60 mm), and .093" (2.36 mm) thick cards
- Choice of pitch: 0.50 mm, 0.635 mm, 0.80 mm, 1.00 mm, 1.27 mm, 2.00 mm
- Vertical, right-angle, edge mount
- Available in surface mount and through-hole



Staggered press-fit tails
(MEC8-VP)



Justification beam ensures
card and body are flushed
(MEC5)

KEY SPECIFICATIONS

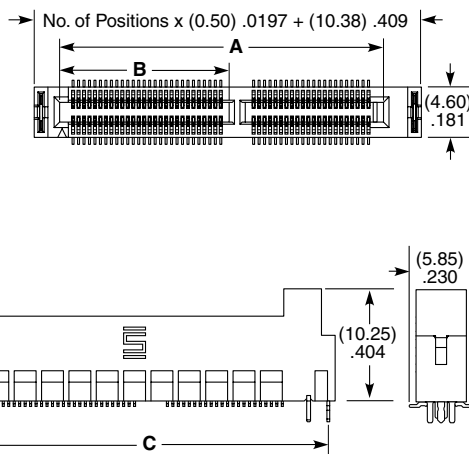
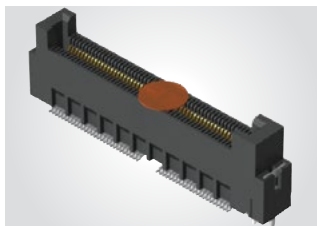
| SERIES | PITCH | TOTAL POSITIONS | INSULATOR MATERIAL | CONTACT MATERIAL | OPERATING TEMP RANGE | CURRENT RATING | VOLTAGE RATING | LEAD-FREE SOLDERABLE |
|--------|----------|-----------------|--------------------|------------------|----------------------|----------------|----------------|----------------------|
| MEC5 | 0.50 mm | 60-200 | Black LCP | Phosphor Bronze | -55 °C to +125 °C | 1.5 A (2 pins) | 125 VAC | Yes |
| MEC6 | 0.635 mm | 20-140 | Black LCP | Phosphor Bronze | -55 °C to +125 °C | 2.4 A (2 pins) | 195 VAC | Yes |
| MEC8 | 0.80 mm | 20-140 | Black LCP | Phosphor Bronze | -55 °C to +125 °C | 1.8 A (4 pins) | 185 VAC | Yes |
| MEC1 | 1.00 mm | 20-140 | Black LCP | Phosphor Bronze | -55 °C to +125 °C | 2.2 A (2 pins) | 250 VAC | Yes |
| MECF | 1.27 mm | 10-100 | Black/Natural LCP | BeCu | -55 °C to +125 °C | 3.5 A (2 pins) | 280 VAC | Yes |
| MEC2 | 2.00 mm | 10-100 | Black/Natural LCP | BeCu | -55 °C to +125 °C | 3.5 A (2 pins) | 238 VAC | Yes |

(0.50 mm) .0197" PITCH • MICRO EDGE CARD SOCKET

| MEC5 | POSITIONS PER ROW | 01 | PLATING OPTION | TAIL OPTION | WELD TAB OPTION | OTHER OPTION | "X"R |
|------|--|----|---|---|---|---|---|
| | -030, -040, -050, -060, -070, -080 (-RA & -DV) -090, -100 (-DV only) | | -L =10 μ" (0.25 μm) Gold on contact, Matte Tin on tail | -DV Vertical -RA Right-angle | -W1 = Weld Tab Through-hole (Required for -DV option) -W2 = Weld Tab Surface Mount (Not available for -DV) | -K = Polyimide Pick & Place Pad (Required for -DV) (Not available in -RA) | Leave blank for Tray Packaging -TR = Tape & Reel -FR = Full Reel Tape & Reel (must order max. quantity per reel; contact Samtec for quantity breaks) |

MEC5-DV

Card Mates:
(1.60 mm) .062" thick card with standard board tolerance



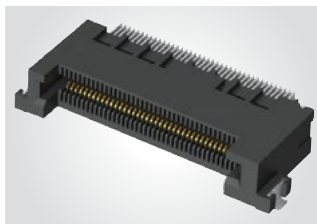
| POSITIONS PER ROW | A | B | C |
|-------------------|------------------|------------------|------------------|
| -030 | (17.10) .673 | N/A | (21.63) .852 |
| -040 | (22.10) .870 | N/A | (26.63) 1.048 |
| -050 | (29.60) 1.165 | (15.48) .609 | (34.13) 1.344 |
| -060 | (34.60) 1.362 | (17.98) .708 | (39.13) 1.541 |
| -070 | (39.60) 1.559 | (20.48) .806 | (44.13) 1.737 |
| -080 | (44.60) 1.756 | (22.98) .905 | (49.13) 1.934 |
| -090 | (49.60) 1.953 | (25.48) 1.003 | (54.13) 2.131 |
| -100 | (54.60) 2.150 | (27.98) 1.102 | (59.13) 2.328 |

Note: Polarization rib is not present on -030 & -040 positions

View complete specifications at: samtec.com?MEC5-DV

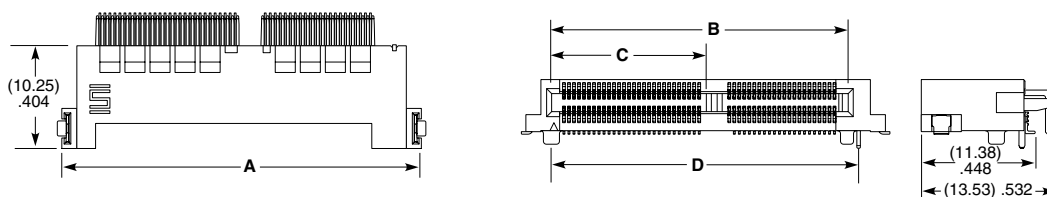
MEC5-RA

Card Mates:
(1.60 mm) .062" thick card with standard board tolerance



| POSITIONS PER ROW | A | B | C | D |
|-------------------|------------------|------------------|-----------------|------------------|
| -30 | (23.38) .920 | (17.10) .673 | N/A | (18.16) .715 |
| -40 | (28.38) 1.117 | (22.10) .870 | N/A | (23.16) .912 |
| -50 | (35.88) 1.413 | (29.60) 1.165 | (15.44) .608 | (30.66) 1.207 |
| -60 | (40.88) 1.609 | (34.60) 1.362 | (17.94) .706 | (35.66) 1.404 |
| -70 | (45.88) 1.806 | (39.60) 1.559 | (20.44) .805 | (40.66) 1.601 |
| -80 | (50.88) 2.003 | (44.60) 1.756 | (22.94) .903 | (45.66) 1.798 |

Note: Polarization rib is not present on -030 & -040 positions



Note:
Some sizes, styles and options are non-standard, non-returnable.

View complete specifications at: samtec.com?MEC5-RA