

# Customer Information Sheet

DRAWING No.: M80-321 TO M80-322

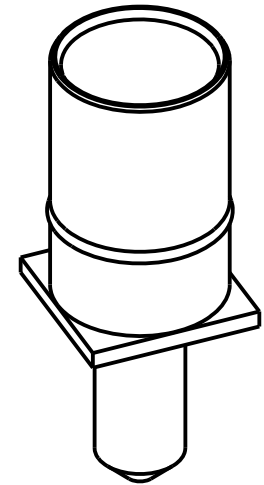
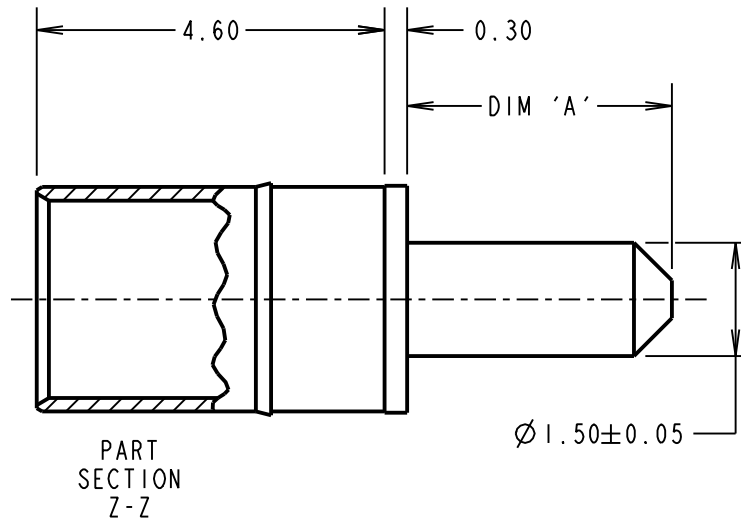
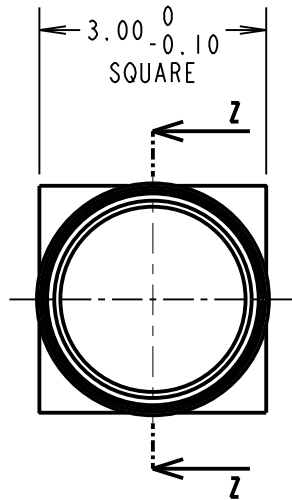
IF IN DOUBT - ASK

©

NOT TO SCALE

THIRD ANGLE PROJECTION

ALL DIMENSIONS IN mm



**SPECIFICATIONS:**

**MATERIALS:**

BODY = COPPER ALLOY

**FINISH:**

BODY = GOLD

**ELECTRICAL:**

CONTACT RESISTANCE =  $6m\Omega$  MAX

CURRENT RATING = 20A

**MECHANICAL:**

DURABILITY = 500 OPERATIONS

INSERTION FORCE = 8N MAX

WITHDRAWAL FORCE = 0.5N MIN

**ENVIRONMENTAL:**

TEMPERATURE RANGE =  $-55^{\circ}C$  TO  $+125^{\circ}C$

PART No.	DIM 'A'
M80-321	3.50
M80-322	5.00

RTP	7	04.09.18	21359
NAME	ISS.	DATE	C/NOTE
APPROVED: R.PORTLOCK			
CHECKED: S.BENNETT			
DRAWN: W. J. BOURNE			
CUSTOMER REF.:			
ASSEMBLY DRG:			

**NOTES:**

1. RECOMMENDED PCB HOLE SIZE =  $\varnothing 1.60mm$  MIN.
2. FOR ALL OTHER ELECTRICAL/MECHANICAL REQUIREMENTS, SEE COMPONENT SPECIFICATION C005XX (LATEST ISSUE).

**HARWIN**

www.harwin.com  
technical@harwin.com

THIS DRAWING AND ANY INFORMATION OR DESCRIPTIVE MATTER SET OUT HEREON ARE CONFIDENTIAL AND COPYRIGHT PROPERTY OF THE HARWIN GROUP AND MUST NOT BE DISCLOSED, LOANED, COPIED OR USED FOR MANUFACTURING, TENDERING OR FOR ANY OTHER PURPOSE WITHOUT THEIR WRITTEN PERMISSION.

**TOLERANCES**

X. =  $\pm 1mm$   
 X.X =  $\pm 0.50mm$   
 X.XX =  $\pm 0.10mm$   
 X.XXX =  $\pm 0.01mm$   
 ANGLES =  $\pm 5^{\circ}$   
 UNLESS STATED

**MATERIAL:**

SEE ABOVE

FINISH: SEE ABOVE

S/AREA: SEE SHEET 1 mm<sup>2</sup>

TITLE: DATAMATE MIX-TEK  
 POWER CONTACT  
 FEMALE VERTICAL PC-TAIL

DRAWING NUMBER:

**M80-321 TO M80-322**

SHT  
 2 OF 2