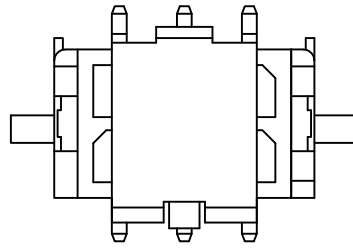
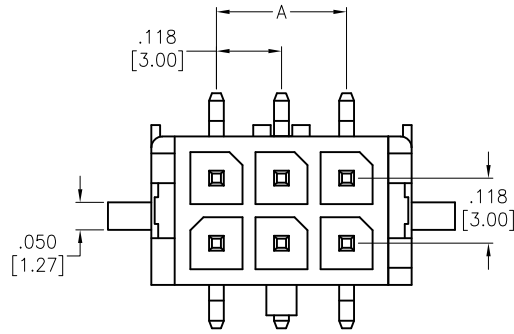
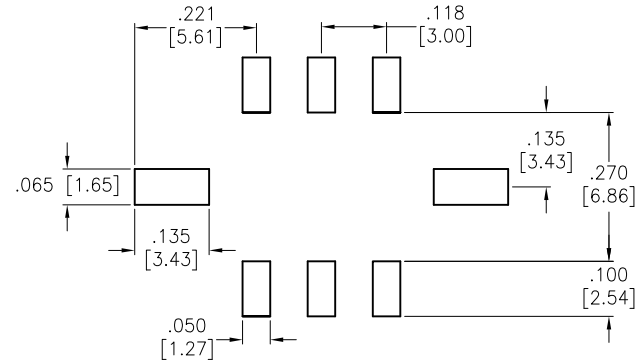


APPROVED: \_\_\_\_\_  
 DATE: \_\_\_\_\_ TITLE: \_\_\_\_\_

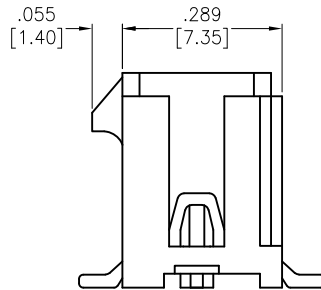
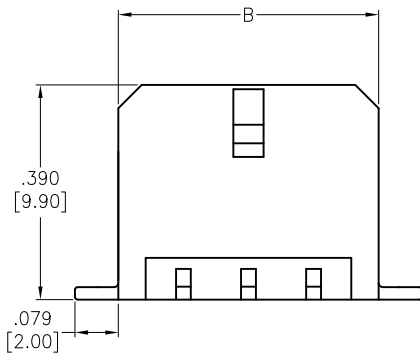
Rev	AWO #	Description	Date	Appr
-		RELEASED	09/05/12	



SHOWN WITH CAP



RECOMMENDED PCB LAYOUT



PACKAGED ON TAPE & REEL

POSITIONS	Dimension	
	A	B
2	N/A	.262 [6.65]
4	.118 [3.00]	.380 [9.65]
6	.236 [6.00]	.498 [12.65]
8	.354 [9.00]	.616 [15.65]
10	.472 [12.00]	.734 [18.65]
12	.591 [15.00]	.852 [21.65]
14	.709 [18.00]	.970 [24.65]
16	.827 [21.00]	1.088 [27.65]
18	.945 [24.00]	1.206 [30.65]
20	1.063 [27.00]	1.325 [33.65]
22	1.181 [30.00]	1.443 [36.65]
24	1.299 [33.00]	1.561 [39.65]

**SPECIFICATIONS:**

**Material:**

Insulator: Hi-temp thermoplastic, rated UL 94V-0

Insulator color: Black

Contacts: Brass, Tin plated

**Plating:**

Tin over Copper underplate overall

**Electrical:**

Operating voltage: 250V AC, DC

Current rating: 5A AC, DC

Contact resistance: 10 mohms max

Dielectric withstanding voltage: 1,500 VAC for 1 minute

**Temperature Rating:**

Operating temperature: -25°C to +85°C

**Environmental:**

Lead free, RoHS compliant.



UNLESS OTHERWISE SPECIFIED  
 ALL DIMENSIONS ARE INCHES [MM]  
 TOLERANCES: EXCEPT AS NOTED

INCHES	HOLES
.X ± .10	ØX ± .10
.XX ± .020	ØXX ± .015
.XXX ± .015	ØXXX ± .010

APPROVALS		DATE
DRAWN	TW	09/05/12
CHECKED	AY	09/05/12
APPROVED		

**ADAM TECH**

909 Rahway Avenue, Union, NJ 07083  
 Phone: 908-687-5000 Fax: 908-687-5710

TITLE: .118 [3.00] DUAL ROW HEADER, VERTICAL  
 TRUE SMT TYPE, WITH CAP

SIZE X	PART NO. DML-XX-A-V-T-TSMT-PP-T/R	REV. -
REF: S00123T	SCALE: NTS	SHEET 1 OF 1