

# PRODUCT CHANGE NOTIFICATION

Product Category OUTLETS 20220131-1

Product Group ROAR

ISSUE DATE: 31-Jan-22

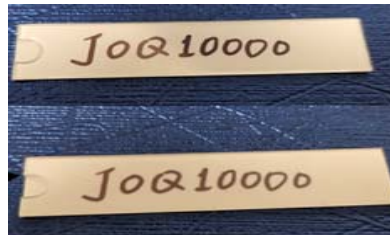
IMPACTED REGIONS:  NA  EMEA  LATAM  AP

REASON FOR CHANGE:  DISCONTINUATION  
 OTHER

**DESCRIPTION OF CHANGE: (Required)**

Label covers included in select product will change to a matte finish and will replace the glossy finish. Changes will begin at the end of February, during the transition period there is the possibility of receiving some parts with matte covers and some with glossy covers. The matte label cover is not noticeable after installation. A list of affected part numbers is included.

Photos/Drawing (where applicable)



IMPACTED PART NUMBERS AND REPLACEMENT PART NUMBERS: (where applicable)

[Reference Page 2 / Linked PDF](#)

**DATES: DISCONTINUATION AND NEW PRODUCT AVAILABILITY:**

SCHEDULE FOR CHANGE	Year (YYYY)	Month (MM)	Day (DD)
New product sample availability date	2022	2	28
Old product discontinuation date*			

IMPACTED PART NUMBER(s)

CHES2AWY  
CHES3AWY  
CHLKCLS2SEW  
CFPDS2SEWY  
NKUKS2AW  
NKUKS4AW-2G  
NKUKS2SAW  
NKUKS4SAW-2G  
CFPFLS1SAW  
CFPFLS2SAW  
CS2P6TGAWY  
CS2S6TGAWY  
CS3P6TGAWY  
CBUKAWY  
CES3AWY  
CFPE3AWY  
CFPE3PWY  
CFPUKS2SAWY  
CFPUKS2SIWY  
CFPUKS4SAW-2GY  
NKFPL86F2SAW  
NKFPL86F4SAW  
CFPL86F2SAW  
CFPL86F4SAW  
NKFPLUKF4SAW  
NKFPLUKF2SAW  
CFPL86F1SAW  
NKFPL86F1SAW  
NKFPLUKF1SAW  
CS2S6XTGAW  
CS2P6XTGAW  
CS3P6XTGAW  
CFPLUKF2SBL/N  
CFPLUKF2SBL/NY  
JOQ2H6A00  
JOQ20000  
JOQ20000BL  
JOQ2H500  
JOQ2H600  
CBXQ2IW-A  
CBXQ2AW-A  
CBXQ2EI-A  
CBXQ2WH-A  
CBXQ2BL-A  
JOQ1B0000  
JOQ1B0000BL

CPPLA24WBLY  
CPPL24WBLY  
CPPL24WBLY  
CPPLA48WBLY  
CPPKL6G24WBL  
CPPL48WBLY  
CPPKL6ATG24WBL  
CPPKL6G48WBL  
NKFPL24  
NKFPL48  
JOQ4H6A00  
JOQ6H6A00  
JOQ3BH6A00  
JOQ40000  
JOQ60000  
JOQ40000BL  
JOQ60000BL  
JOQ6H500  
JOQ3BH500  
JOQ4H500  
JOQ4H600  
JOQ6H600  
CBXQ4WH-A  
CBXQ6IW-A  
CBXQ6AW-A  
CBXQ4EI-A  
CBXQ4IW-A  
CBXQ4AW-A  
CBXQ6EI-A  
CBXQ6WH-A  
JOQ3BH600  
JOQ3B0000  
JOQ3B0000BL  
CFPGAS9SBL  
CFTSL4AW  
CFFPL2WH  
NK4MFLBL  
NK4MFLWH/N  
NK4MFLIG/N  
CFPE10WH-2GY  
CFPE10IG-2GY  
CFPE10IW-2GY  
CFPE10EI-2GY  
CFPE10BL-2GY  
CBEIW-2GY  
CBEWH-2GY  
EFPK102G-XY

CADIN1IG  
CADIN1BL  
CADIN1IG-S  
CADIN1BL-S  
CFFPL4BL  
CFFPEBSL4BL  
CFFPL4WH  
CFPHSL4IG  
CFPHSL4IW  
CFFPL4IG  
CFFPL4IW  
CFFPL2WH  
CFFPL2BL  
CPPKL6G24WBL  
CPPL24WRBLY  
CPPKLA6ATG48WBL  
CPPKL6ATG24WBL  
CPPKL6ATG48WBL  
CPPKL6G48WBL  
CPPL24WBLY  
CPPL48WBLY  
CPPLA24WBLY  
CPPLA48WBLY  
C4PPLK