

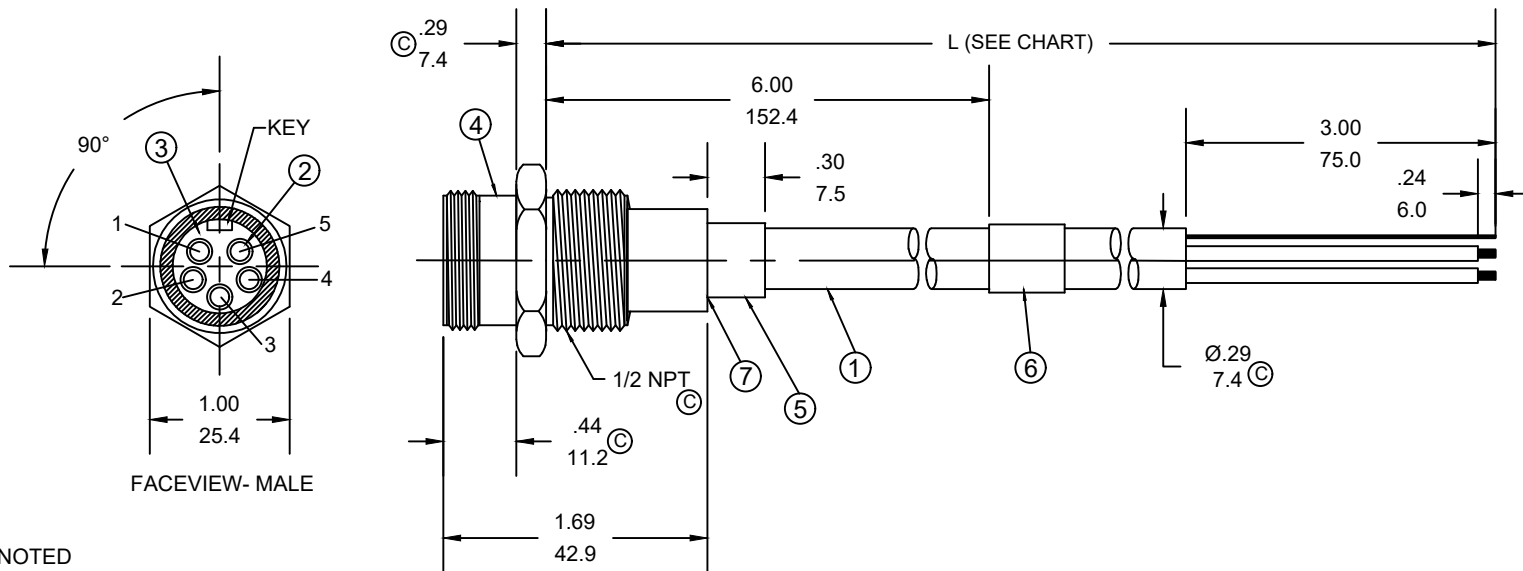
MATERIAL NUMBER	ENGINEERING NUMBER	FINISHED LENGTH
1300390326	DND5100-M003	0.3M [1FT]
1300310041	DND5100-M040	4M [13 FT 1 IN]
1300390578	DND5100-M100	10M [32 FT 9 IN]

PART NO. MATRIX

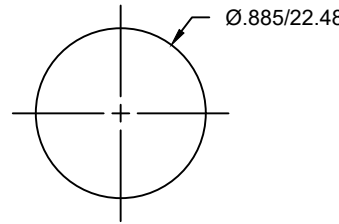
DND5100-M050

FINISHED LENGTH:
M005= 0.5 METER
M050= 5 METER
M100= 10 METER

CABLE LENGTH TOLERANCES
<.3M [1FT]: +19mm-0 [+.75in-0]
.3 - .9M [1 - 3FT]: +44.5mm-0 [+1.75in-0]
.9 - 1.8M [3 - 6FT]: +55.6mm-0 [+2.19in-0]
1.8 - 3.7M [6 - 12FT]: +88.9mm-0 [+3.50in-0]
3.7 - 7.3M [12 - 24FT]: +165.1mm-0 [+6.50in-0]
7.3-14.6M [24 - 48FT]: +317.5mm-0 [+12.50in-0]
14.6 - 30.5M [48-100FT]: +622.3mm-0 [+24.50in-0]
OVER 30M [100FT] +2% OF FINISHED LENGTH



- NOTES:
- MATERIAL: AS NOTED
 - FINISH: AS NOTED
 - ELECTRICAL:
VOLTAGE RATING PER IEC 60664: 300V
VOLTAGE RATING PER UL: 300V
CURRENT: 4A
 - PROTECTION: IP67 (WHEN MATED)
 - COUPLING THREAD: 7/8-16.
 - UL LISTED FILE: E152210
CSA CERTIFIED FILE: LR6837
 - ALL DIMENSIONS ARE FOR REFERENCE
UNLESS TOLERANCED OR NOTED OTHERWISE



WIRING DIAGRAM

1	SHIELD
2	RED
3	BLACK
4	WHITE
5	BLUE

7	-	POTTING MATERIAL	EPOXY	-
6	1	LABEL	VINYL	BLACK/YELLOW
5	-	HEATSHRINK	POLYOLEFIN	BLACK
4	1	MC M/MP SHELL	ZINC	NICKEL PLATED
3	1	INSERT MALE 5P A SIZE	TPE	GRAY
2	5	CONTACT MALE	BRASS	GOLD
1	-	CABLE 4/#22	PVC	GRAY
ITEM	QTY.	COMPONENT	MATERIAL	FINISH

FUNCTIONAL SYMBOLS	THIS DRAWING CONTAINS INFORMATION THAT IS PROPRIETARY TO MOLEX ELECTRONIC TECHNOLOGIES, LLC AND SHOULD NOT BE USED WITHOUT WRITTEN PERMISSION			
$F_A=0$ $F_C=0$ $F_P=0$	DIMENSION UNITS	SCALE		CURRENT REV DESC: ITEM# 3 WAS PVC. ADDED CABLE DIA & PANEL CUTOUT. MODIFIED MATERIAL TABLE. DIMS ADDED ZONE C4.REMOVED TEMP RATING
	INCH/MM	NTS		
DIVISIONAL SYMBOLS	GENERAL TOLERANCES (UNLESS SPECIFIED)			EC NO: 645633 DRWN: ABENJAMINLW 2020/09/07 CHK'D: RSTONE 2020/09/29 APPR: BWOODMAN 2020/10/23 INITIAL REVISION: DRWN: KKALICIAK 2015/11/13 APPR: MIWASIECZKO 2015/12/15
		mm	INCH	
	4 PLACES	±----	±----	
	3 PLACES	±----	±----	
	2 PLACES	±----	±----	
1 PLACE	±----	±----		
0 PLACES	±----	±----		
	ANGULAR TOL ± ---- °			DOCUMENT NUMBER
	DRAFT WHERE APPLICABLE MUST REMAIN WITHIN DIMENSIONS			SD-130039-061
	THIRD ANGLE PROJECTION	DRAWING	SERIES	DOC TYPE/DOC PART/REVISION
		A-SIZE	130039	PSD 001 C
		MATERIAL NUMBER	CUSTOMER	SHEET NUMBER
		SEE CHART	GENERAL MARKET	1 OF 1

DOCUMENT STATUS	P1	RELEASE DATE	2020/10/23	13:29:08
-----------------	----	--------------	------------	----------