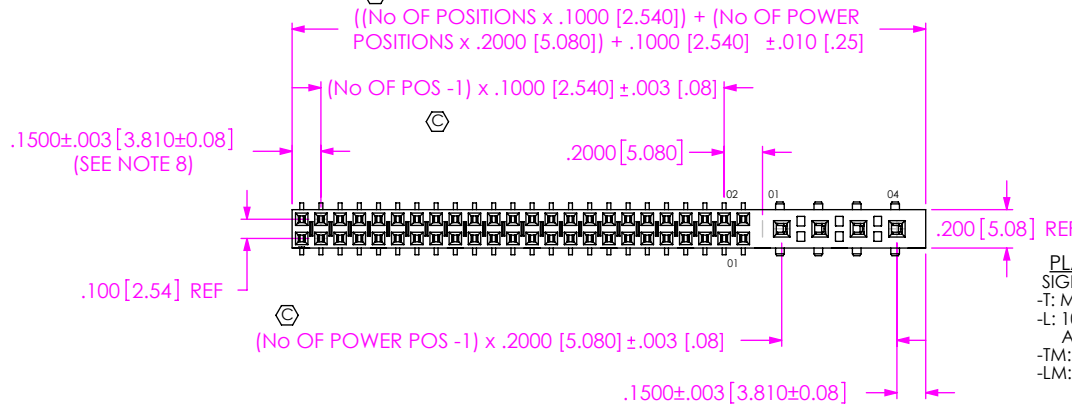


DO NOT SCALE FROM THIS PRINT

HPFC-1XX-XX-XX-D-XX-XX



No OF POSITIONS

-02 THRU -24 (PER ROW)

LEAD STYLE

-01: THROUGH HOLE (C-95-01-X & C-130-03-X)  
-02: SURFACE MOUNT (C-95-02-X & C-130-04-X)

PLATING SPECIFICATION

SIGNAL ONLY

-T: MATTE TIN ON CONTACT AND TAIL  
-L: 10µ" LIGHT SELECTIVE GOLD IN CONTACT AREA, MATTE TIN ON TAIL  
-TM: MATTE TIN CONTACT AND TAIL  
-LM: 10µ" LIGHT SELECTIVE GOLD IN CONTACT AREA, MATTE TIN ON TAIL

OPTION

-LC: LOCKING CLIP (SEE NOTE 9 & 10)  
\* -A: ALIGNMENT PIN (USE HPFCR-XX-D-X-A)  
-K: KAPTON PAD (SHEET 2) (USE K-500-300)

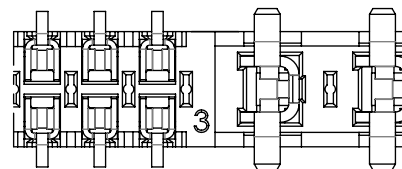
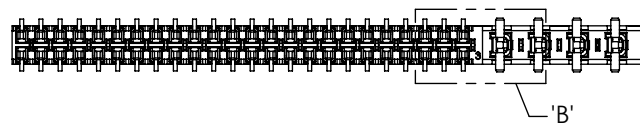
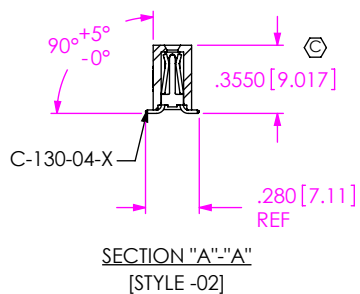
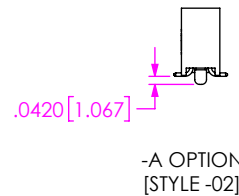
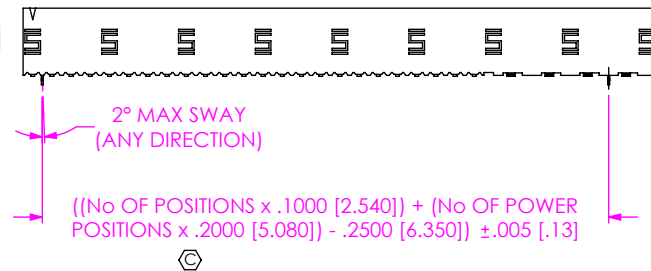
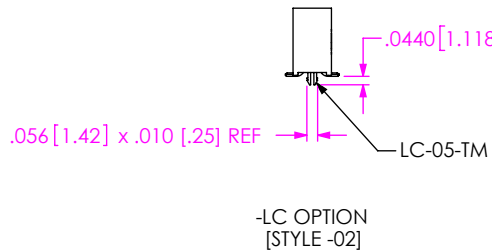
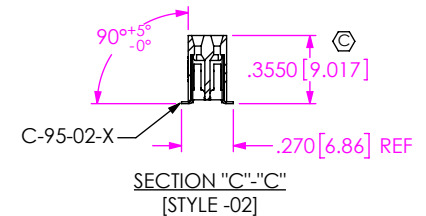
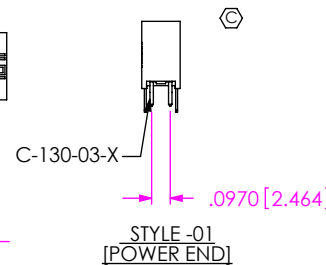
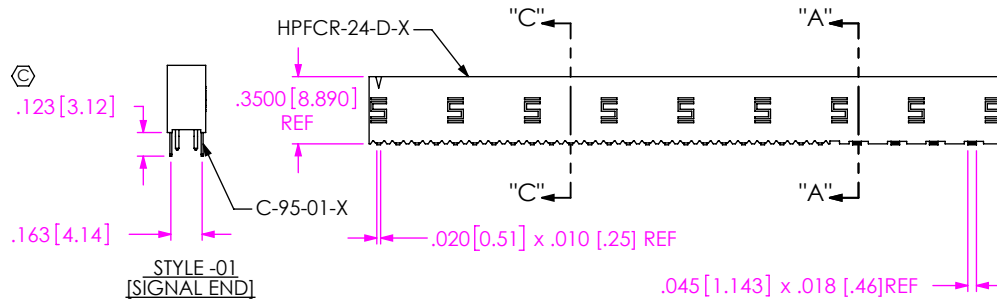
POWER POSITIONS

-02 THRU -04 (USE C-130-03-X AND C-130-04-X)

ROW SPECIFICATION

-D: DOUBLE (USE HPFCR-24-D-X-X)

\* = NOT ENGINEERING APPROVED



DETAIL 'B' SCALE 3:1

NOTES:

1.  $\text{C}$  REPRESENTS A CRITICAL DIMENSION.
2. COPLANARITY TO BE WITHIN .006" [.15] FOR 20 POSITION AND BELOW (SIGNAL) AND .008" [.20] FOR 21 -32 POS. (SIGNAL).
3. BURR ALLOWANCE: .003 [.08] MAX.
4. MAXIMUM CUT FLASH: .020 [.51].
5. MINIMUM PUSHOUT FORCE: 1 LB. MIN ON SIGNAL POSITIONS, 2 LB. MIN ON POWER POSITIONS.
6. MAXIMUM ALLOWABLE BOW: .005 INCH/INCH [MM/MM] AFTER ASSEMBLY.
7. OPEN PART OF POWER CONTACT FILLED TOWARDS SIGNAL CONTACTS.
8. MINIMUM WALL THICKNESS TO BE .010 [.25].
9. -LC OPTION NOT AVAILABLE WITH -01 LEAD STYLE.
10. DUE TO THE HIGH AMOUNT OF INSERTION FORCE NEEDED, THE -LC OPTION IS NOT COMPATIBLE WITH AUTO PLACEMENT, SAMTEC RECOMMENDS MANUAL PLACEMENT FOR ALL ASSEMBLIES WITH THE -LC OPTION.

UNLESS OTHERWISE SPECIFIED, DIMENSIONS ARE IN INCHES.

TOLERANCES ARE:

DECIMALS ANGLES  
.XX: ±.01 [.3] 2°  
.XXX: ±.005 [.13]  
.XXXX: ±.0020 [.051]

PROPRIETARY NOTE

THIS DOCUMENT CONTAINS CONFIDENTIAL AND PROPRIETARY INFORMATION AND ALL DESIGN, MANUFACTURING, REPRODUCTION, USE, PATENT RIGHTS AND SALES RIGHTS ARE EXPRESSLY RESERVED BY SAMTEC, INC. THIS DOCUMENT SHALL NOT BE DISCLOSED, IN WHOLE OR PART, TO ANY UNAUTHORIZED PERSON OR ENTITY NOR REPRODUCED, TRANSFERRED OR INCORPORATED IN ANY OTHER PROJECT IN ANY MANNER WITHOUT THE EXPRESS WRITTEN CONSENT OF SAMTEC, INC.



520 PARK EAST BLVD. NEW ALBANY, IN 47150  
PHONE: 812-944-6733 FAX: 812-948-5047  
e-Mail: info@SAMTEC.com code: 55322

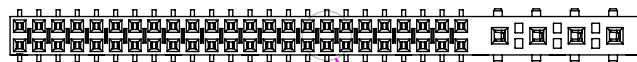
MATERIAL: DO NOT SCALE DRAWING  
INSULATOR: VECTRA E130i COLOR: BLACK  
POWER CONTACT: BeCu 174HT  
SIGNAL CONTACT: PHOS BRONZE CDA510

SHEET SCALE: 1:1

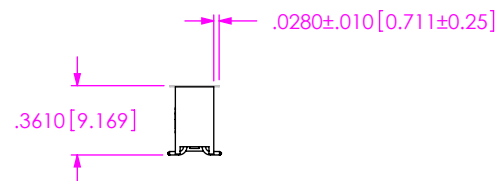
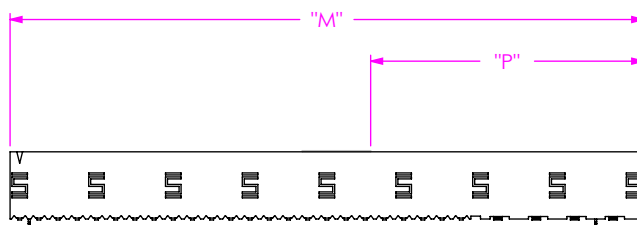
DESCRIPTION: .200 [5.08] POWER COMBO SOCKET ASSEMBLY

DWG. NO. HPFC-1XX-XX-XX-D-XX-XX

BY: DEAN P 01/06/1999 SHEET 1 OF 2

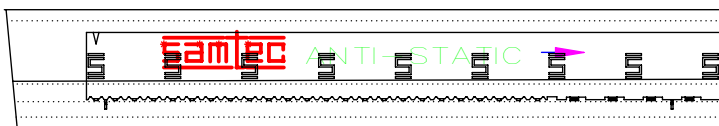


$\phi .256 [6.50]$



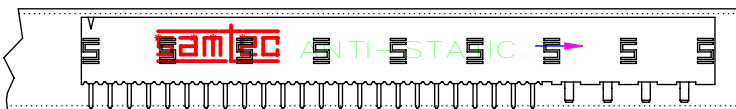
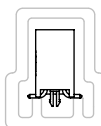
-K OPTION  
(SHOWN: HPFC-122-02-X-D-4-K)

NOTE: "M" = TOTAL PART LENGTH (REF)  
"P" =  $\{ ("M" - .256 [6.50]) / 2 \} \pm .020 [.51]$



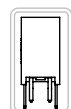
01

TUBE: PT-1-24-01-69  
PLUG: TP-07



01

TUBE: PT-1-24-08-15  
PLUG: TP-03



PACKAGING VIEW

**PROPRIETARY NOTE**  
THIS DOCUMENT CONTAINS CONFIDENTIAL AND PROPRIETARY INFORMATION AND ALL DESIGN, MANUFACTURING, REPRODUCTION, USE, PATENT RIGHTS AND SALES RIGHTS ARE EXPRESSLY RESERVED BY SAMTEC, INC. THIS DOCUMENT SHALL NOT BE DISCLOSED, IN WHOLE OR PART, TO ANY UNAUTHORIZED PERSON OR ENTITY NOR REPRODUCED, TRANSFERRED OR INCORPORATED IN ANY OTHER PROJECT IN ANY MANNER WITHOUT THE EXPRESS WRITTEN CONSENT OF SAMTEC, INC.



520 PARK EAST BLVD, NEW ALBANY, IN 47150  
PHONE: 812-944-6733 FAX: 812-948-5047  
e-Mail: info@SAMTEC.com code: 55322

DO NOT SCALE DRAWING

SHEET SCALE: 1:1

DESCRIPTION:  
.200 [5.08] POWER COMBO SOCKET ASSEMBLY

DWG. NO.  
HPFC-1XX-XX-XX-D-XX-XX

BY: DEAN P 01/06/1999 SHEET 2 OF 2