

4

3

2

1

THIS DRAWING IS UNPUBLISHED.

RELEASED FOR PUBLICATION

ALL RIGHTS RESERVED.

© COPYRIGHT - By -

LOC
HB

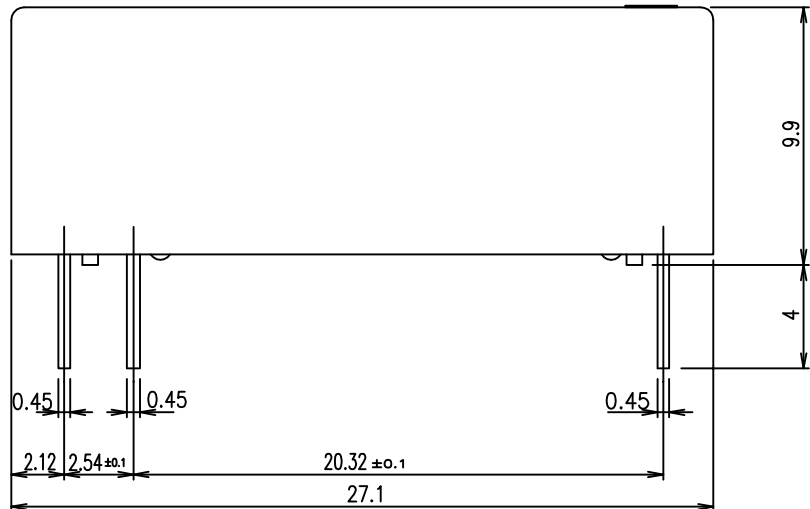
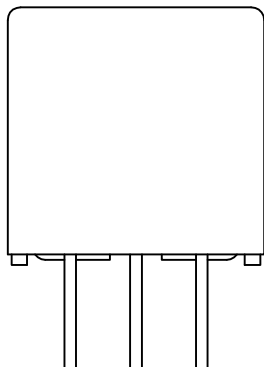
DIST
-

REVISIONS

P	LTR	DESCRIPTION	DATE	DWN	APVD
B1		1.CHANGE TE LOGO 2.ADD LINE IDENTIFICATION 3.PN OBSOLETE	ECO-11-018616	07-MAY-12	P.L. B.H.Y

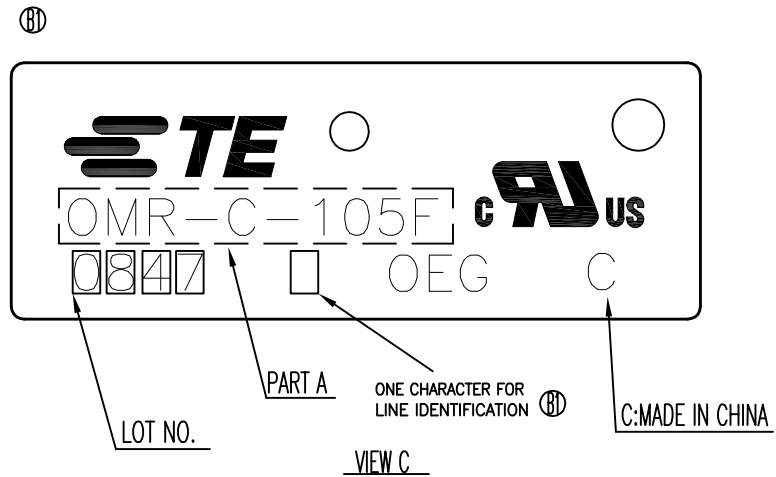
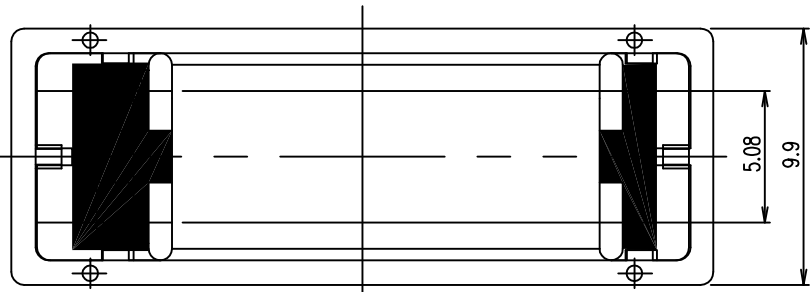
D

D



C

C



B

B

OBSOLETE	1649777-2	OMR-C-109F	OMR-C-109F	107-79022	b
ACTIVE	1649777-1	OMR-C-105F	OMR-C-105F	107-79022	a
STATUS	TE PART NO	EC TYPE NO	PART A	PACKING SPEC.	TYPE

Ⓟ

RELAY TYPE

THIS DRAWING IS A CONTROLLED DOCUMENT.

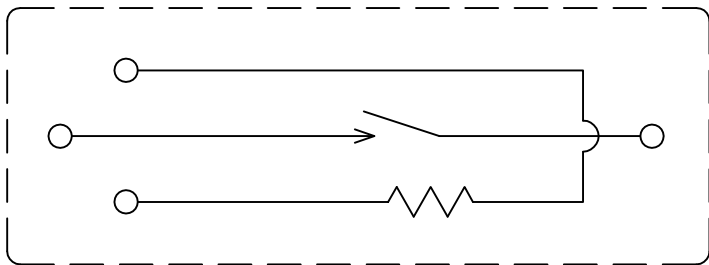
DWN Liu Davey	TE Connectivity OMR-C-1F CUSTOMER DRAWING
CHK Banghua, Yu	
APVD Sunny, Zhang	
PRODUCT SPEC -	NAME -
APPLICATION SPEC -	SIZE A3
WEIGHT -	CAGE CODE 00779
CUSTOMER DRAWING	DRAWING NO C=1649777
	RESTRICTED TO -
	SCALE 5:1
	SHEET 1 OF 2
	REV B1

A

A

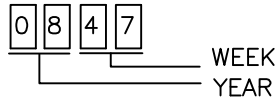
THIS DRAWING IS UNPUBLISHED. RELEASED FOR PUBLICATION
 © COPYRIGHT - By TE CONNECTIVITY ALL RIGHTS RESERVED.

LOC	DIST	REVISIONS			
P	LTR	DESCRIPTION	DATE	DWN	APVD
HB	-	SEE SHEET 1			



CONNECTION DIAGRAM(BOTTOM VIEW)

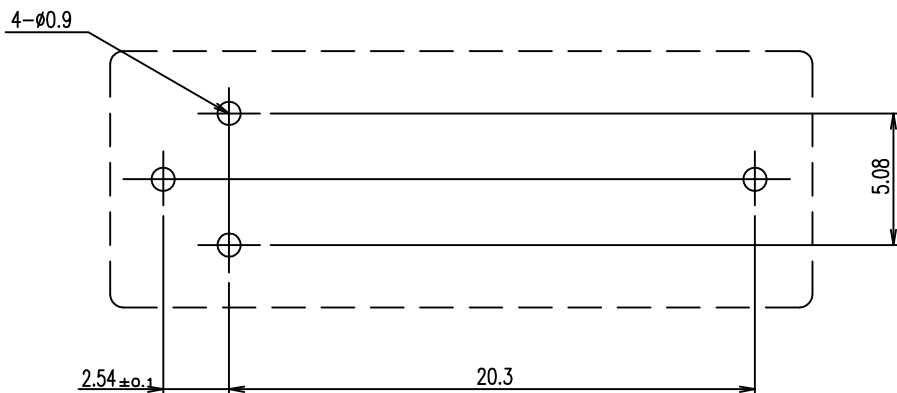
NOTES:
 1.LOT NO. SYSTEM AS FOLLOWING:



2.GENERAL TOLERANCE AS FOLLOWING:

TOLERANCE	
0~0.99mm	±0.1
1mm~2.99mm	±0.2
3mm MIN.	±0.3

3.TERMINAL DIMENSION IS NOT INCLUDING SOLDER TIP.



DRILLING DIAGRAM(BOTTOM VIEW)

	—	EPOXY RESIN	SEAL(BOBBIN+CASE)	9
	—	EPOXY RESIN	SEAL(COIL TERMINAL+BOBBIN)	8
	—	POLYESTER	TAPE	7
CLASS E	—	3UEW	MAGNETIC WIRE	6
	SOLDER DIP	HCP WIRE	COIL TERMINAL	5
	—	DIRLINE	SPACER	4
	—	—	REED SWITCH	3
V-0	—	PBT	CASE	2
V-0	—	PBT	BOBBIN	1
INCOMBUSTIBILITY	TREATMENT	MATERIAL	DESCRIPTION	ITEM

THIS DRAWING IS A CONTROLLED DOCUMENT.		DWN Liu Davey	TE TE Connectivity	
		CHK Banghua, Yu		
DIMENSIONS: mm		APVD Sunny, Zhang	NAME OMR-C-1F CUSTOMER DRAWING	
TOLERANCES UNLESS OTHERWISE SPECIFIED: 0 PLC ± - 1 PLC ± - 2 PLC ± - 3 PLC ± - 4 PLC ± - ANGLES ± -		PRODUCT SPEC —	DRAWING NO A3 00779 C=1649777	
MATERIAL —		FINISH —	APPLICATION SPEC —	RESTRICTED TO —
		WEIGHT —	SCALE 5:1	SHEET 2 OF 2
		CUSTOMER DRAWING	REV B1	